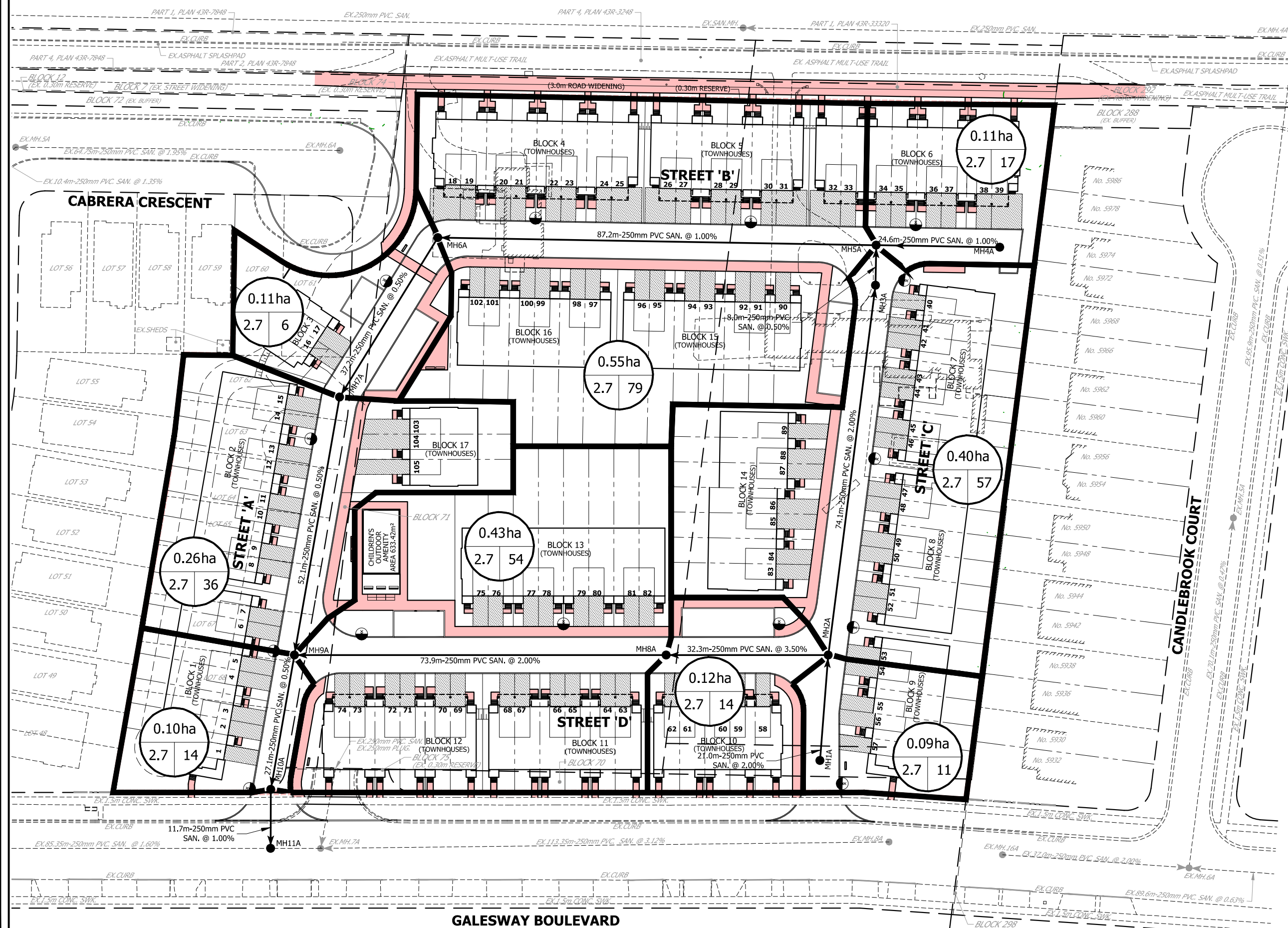


BRITANNIA ROAD WEST



**KEY PLAN
N.T.S.**

LEGEND

- PROPOSED SANITARY MANHOLE
- EXISTING SANITARY MANHOLE
- SANITARY DRAINAGE AREA
- AREA ha
- POPULATION
- POPULATION PER UNIT
- LIMIT OF PROPERTY

BENCHMARK

ELEVATIONS SHOWN HEREON ARE REFERRED TO CITY OF MISSISSAUGA BENCHMARK NO. 1077, HAVING AN ELEVATION OF 178.886 METRES. BEARINGS ARE UTM GRID, DERIVED FROM OBSERVED REFERENCE POINTS A, B AND C, BY REAL TIME NETWORK (RTN) OBSERVATIONS, UTM ZONE 17, NAD83 (CSRS) (2010A). DISTANCES ARE GROUND AND CAN BE CONVERTED TO GRID BY MULTIPLYING BY THE COMBINED SCALE FACTOR OF 0.999734. FOR BEARING COMPARISONS, A ROTATION OF 0°32'30" COUNTER-CLOCKWISE WAS APPLIED TO BEARINGS ON P2, P3, P4, P5 AND P6.

| FIRST DATE | SECOND DATE | THIRD DATE | FINAL DATE |
|---------------|---------------|------------|------------|
| MAR. 25, 2020 | OCT. 22, 2020 | | |

URBANTECH
 Urbantech Consulting
 A Division of Leighton-Clark West Ltd.
 2000 Brimley Avenue, Suite 200
 Scarborough, ON M1S 4E2
 TEL: 416-291-8888 • urbantech.com

NATIONAL HOMES (BRITANNIA)
 1240 BRITANNIA ROAD WEST

Region of Peel
 Public Works

MISSISSAUGA

PRELIMINARY SANITARY DRAINAGE PLAN

| | |
|---------------------|------------------------------|
| REGION FILE No. | CITY FILE No. DARC 19-345 W6 |
| SCALE: 1:750 | AREA PROJECT No. 20-249 |
| DRAWN BY: S.R./A.G. | CHECKED BY: M.M./B.K. |
| DATE: MARCH 2020 | SHEET OF C |

PLOT DATE: March 5, 2021 10:54:52 AM