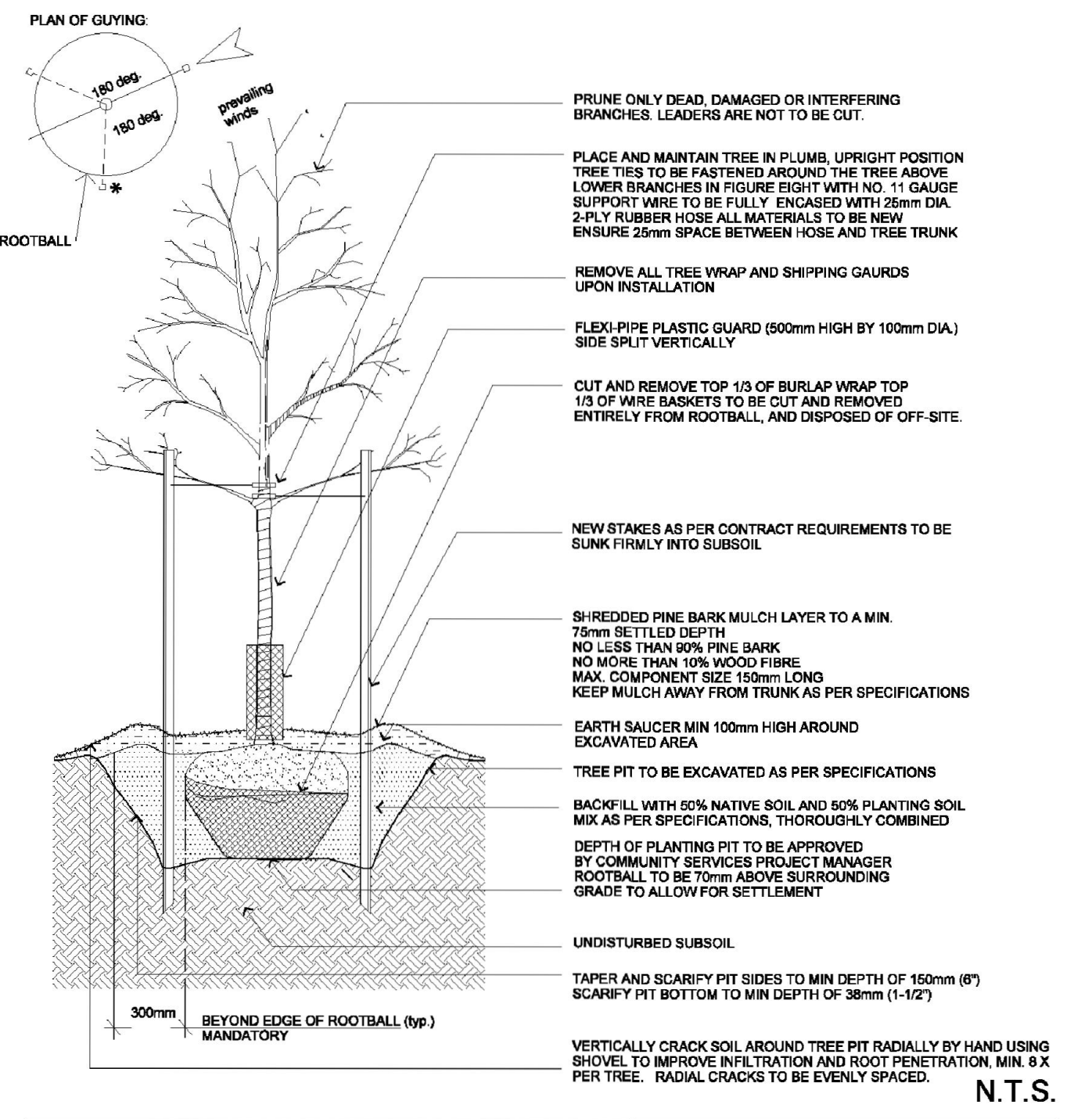


02950-1

Planting Tree Deciduous

NOTE:
TO BE USED AS A GUIDELINE ONLY. NOT TO SCALE. REMOVE CITY TITLE BLOCK AND REDRAW TO REPRESENT SITE SPECIFIC CONDITIONS. ALL SITE SPECIFIC CONDITIONS ARE TO BE CONFIRMED BY THE PROJECT CONSULTANT.

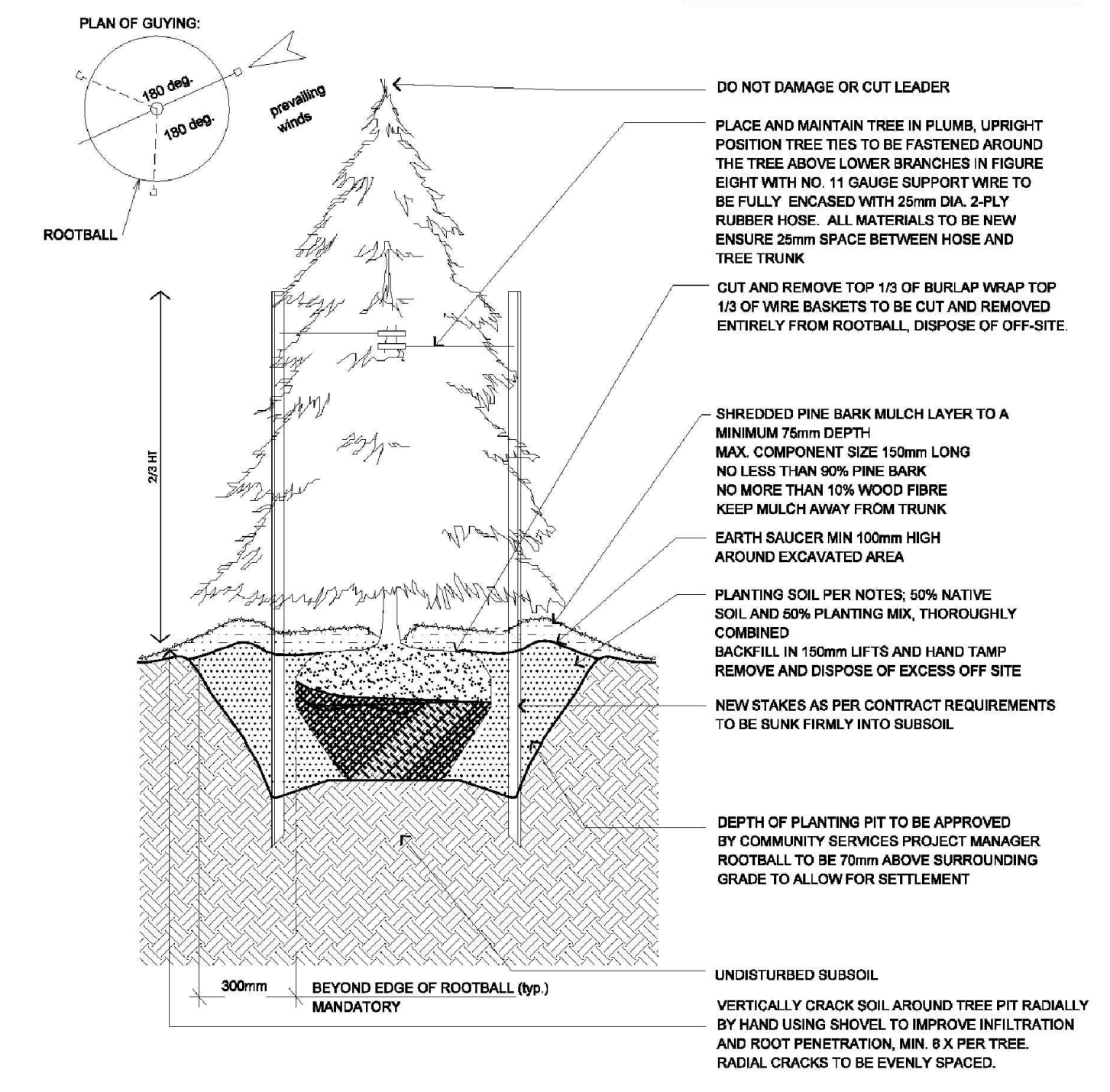


1 Deciduous Tree (Per City Detail 02950-1)
L-2 NTS

02950-2

Planting Tree Coniferous

NOTE:
TO BE USED AS A GUIDELINE ONLY. NOT TO SCALE. REMOVE CITY TITLE BLOCK AND REDRAW TO REPRESENT SITE SPECIFIC CONDITIONS. ALL SITE SPECIFIC CONDITIONS ARE TO BE CONFIRMED BY THE PROJECT CONSULTANT.

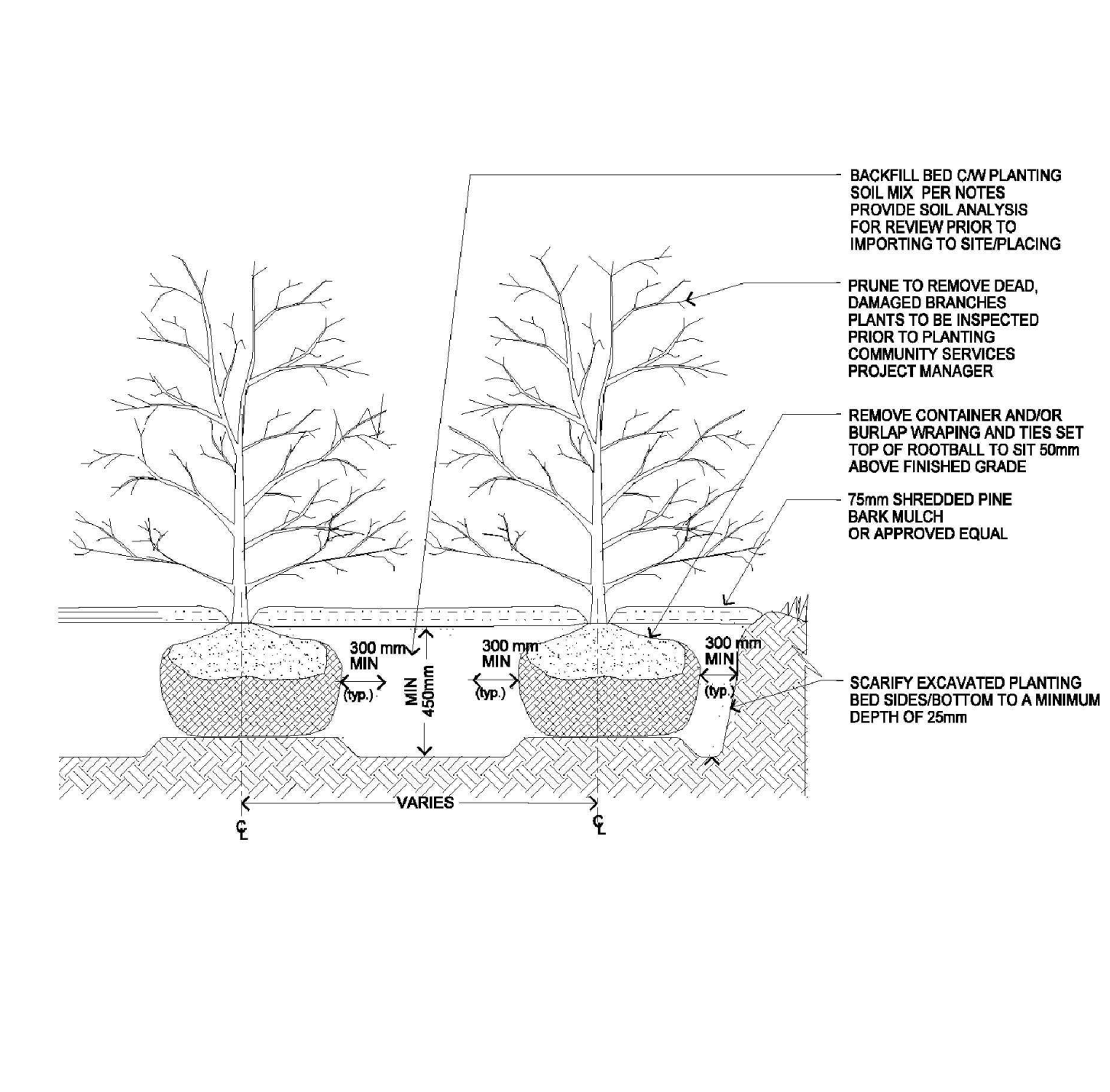


2 Coniferous Tree (Per City Detail 02950-2)
L-2 NTS

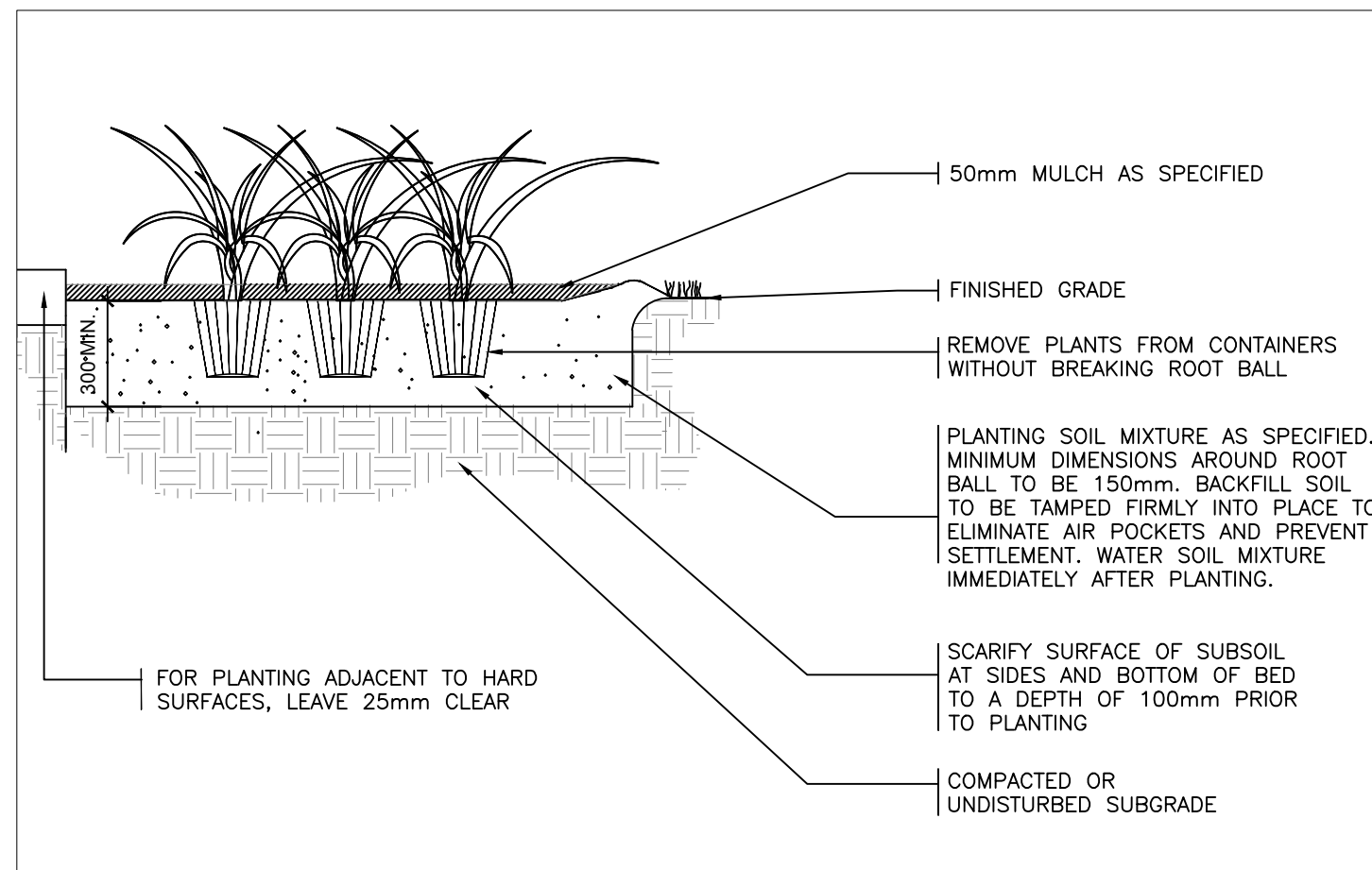
02950-6

Planting Shrub

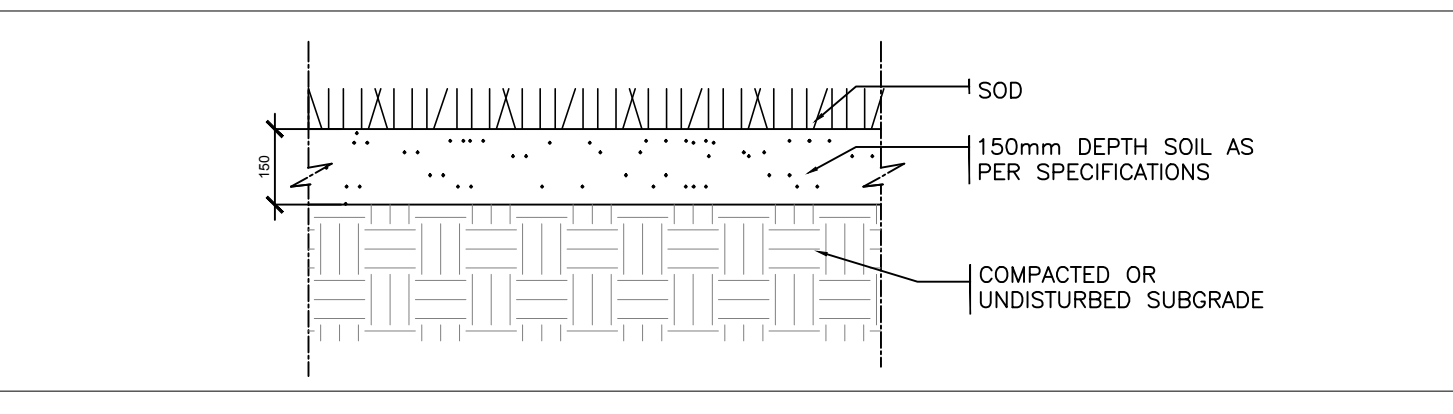
NOTE:
TO BE USED AS A GUIDELINE ONLY. NOT TO SCALE. REMOVE CITY TITLE BLOCK AND REDRAW TO REPRESENT SITE SPECIFIC CONDITIONS. ALL SITE SPECIFIC CONDITIONS ARE TO BE CONFIRMED BY THE PROJECT CONSULTANT.



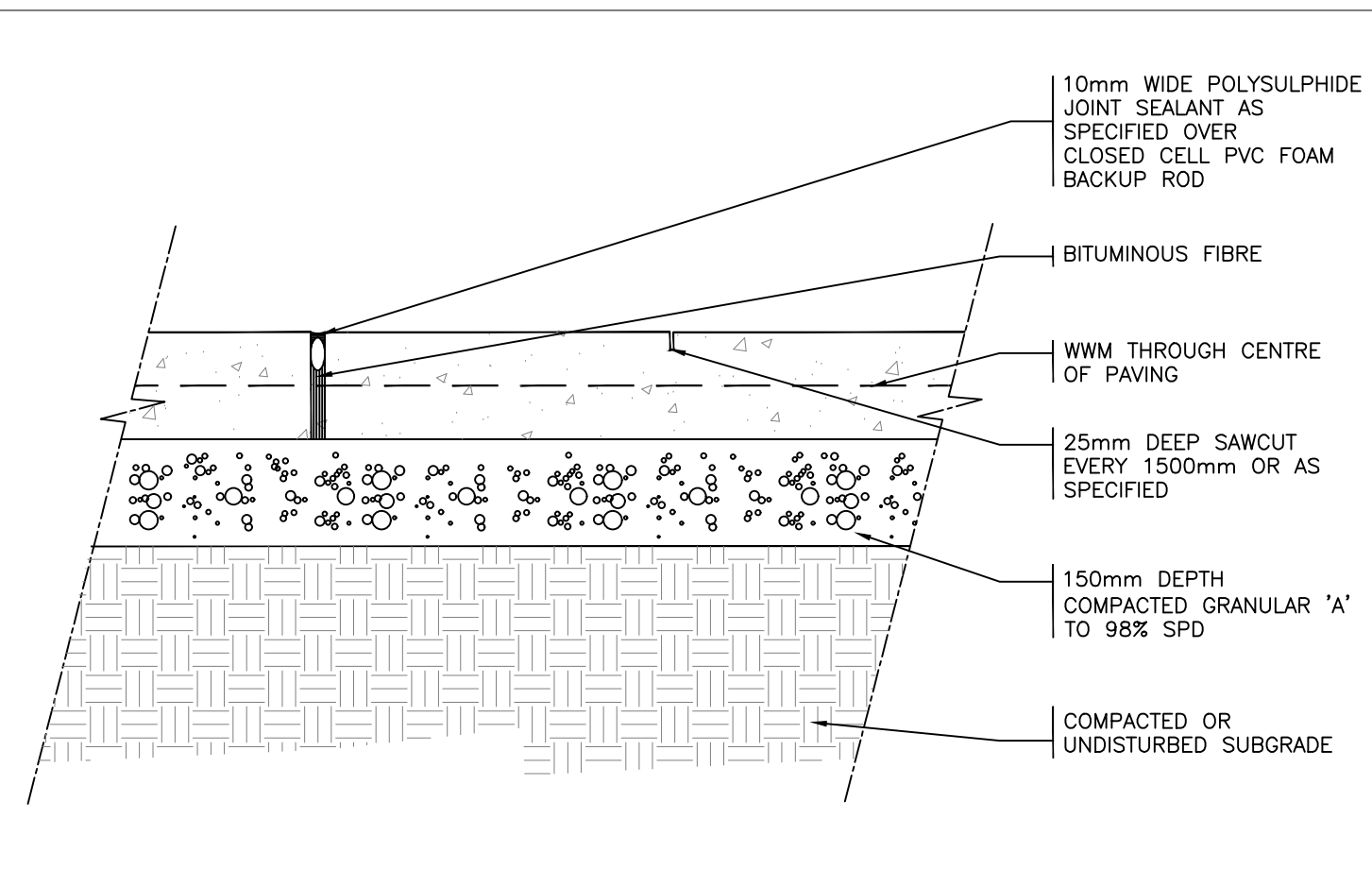
3 Shrub Planting (Per City Detail 02950-6)
L-2 NTS



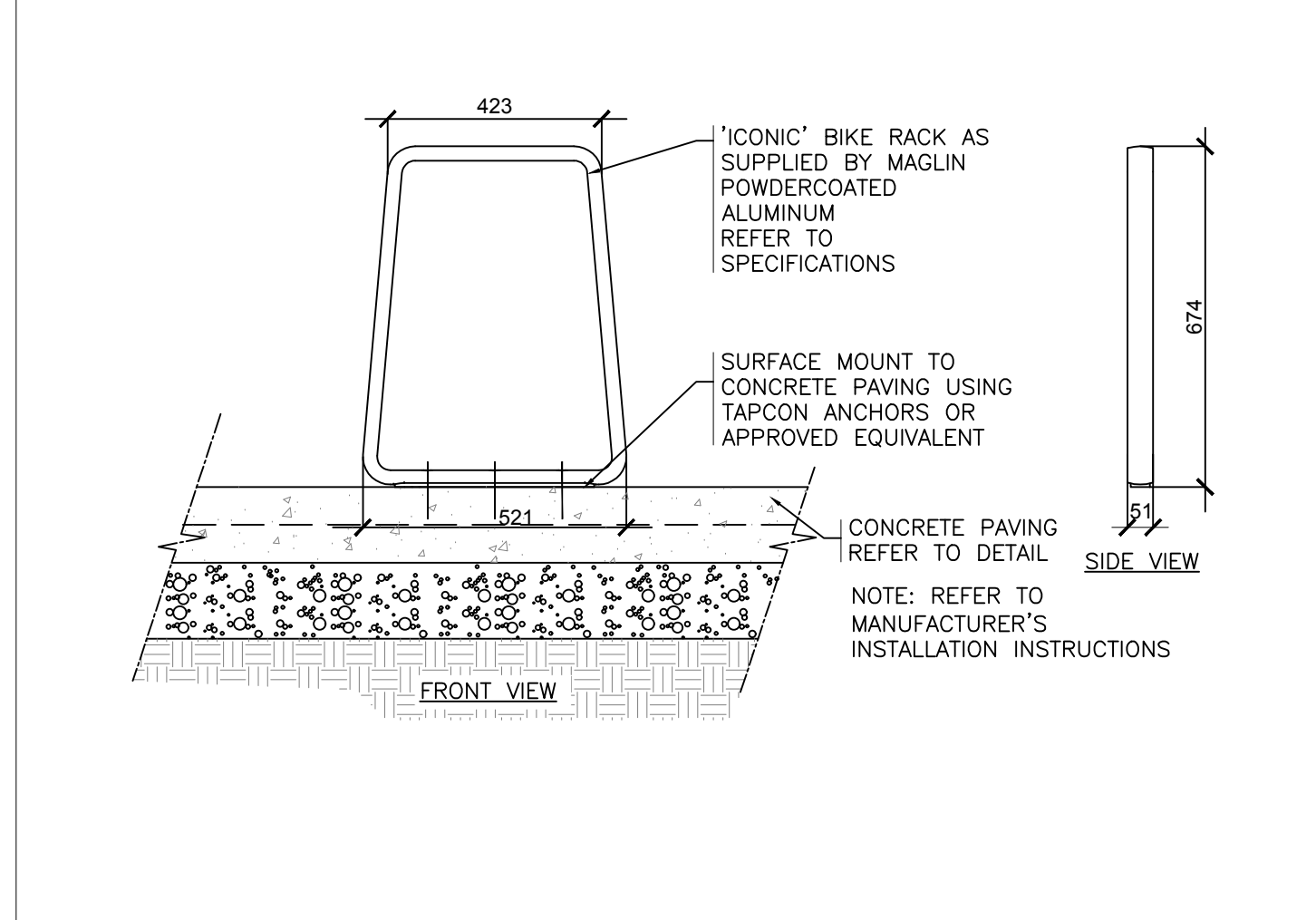
4 Perennial Planting
L-2 1:20



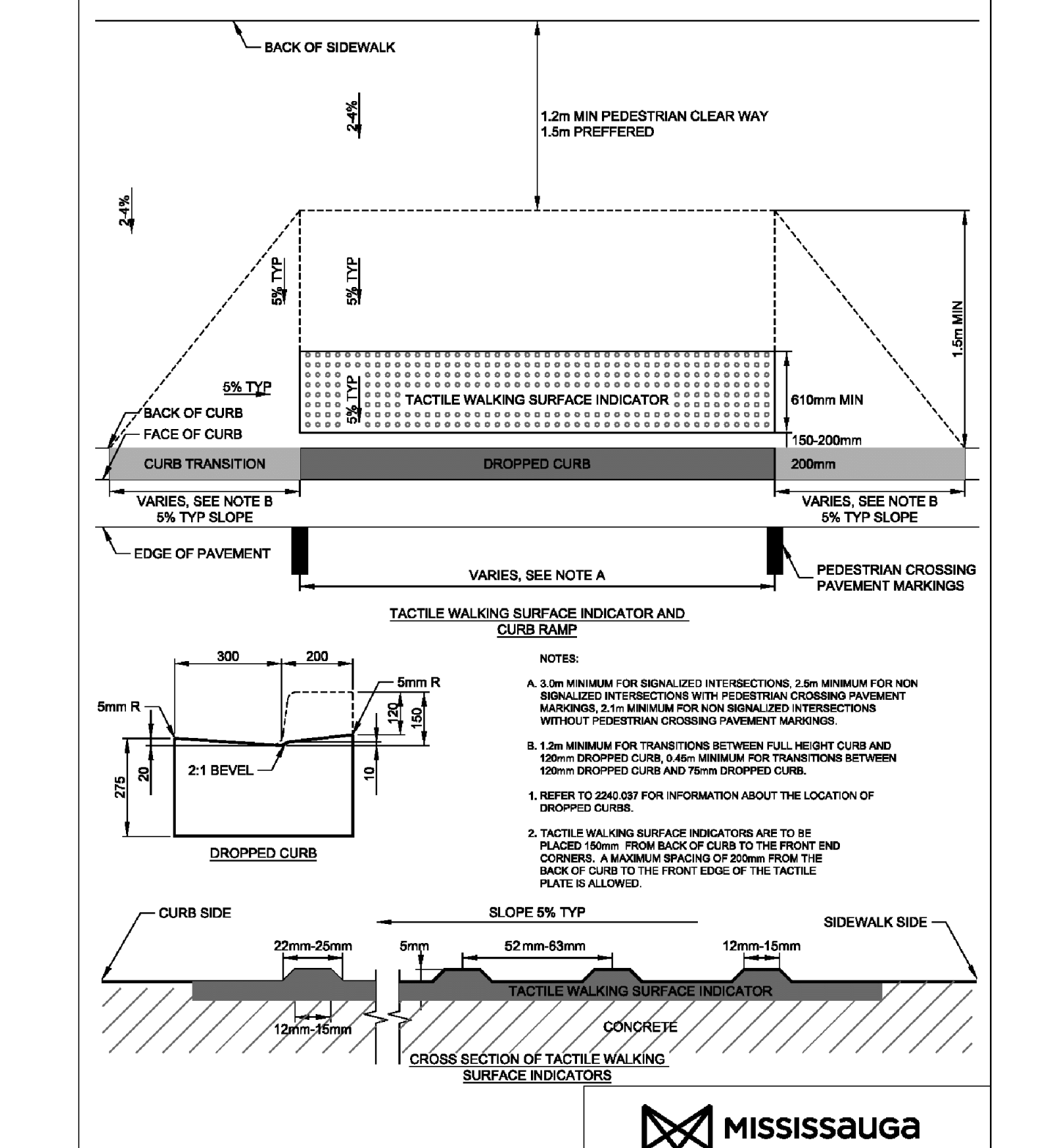
5 Sod
L-2 1:15



6 Standard Concrete Paving
L-2 1:10



7 Bicycle Rack
L-2 1:15



8 Curb Ramp
L-2 NTS

Legend

General Notes

- Do not scale the drawings. All dimensions are in millimetres unless noted otherwise.
- This drawing is to be read in conjunction with the survey prepared by the project architect and project engineer.
- The contractor shall check and verify all existing and proposed grading and conditions on the project and immediately report any discrepancies to the consultant before proceeding with any work.
- The contractor is to be aware of all existing and proposed services and utilities. The contractor is responsible for having all underground services and utility lines staked by each agency having jurisdiction prior to commencing work.
- Final location of the street trees to be determined on site by the Landscape Architect based on final locations of utilities. All boulevard deciduous trees shall have rodent protection collars installed at initial planting.
- This drawing is to be used for development approval only. For layout of all work refer to construction drawings.
- Do not leave any holes open overnight.
- Keep area outside construction zone clean and useable by others at all times. Contractor shall thoroughly clean areas surrounding the construction zone at the end of each work day.
- Contractor to make good any and all damages outside of the development area that may occur as a result of construction at no extra cost.
- This drawing is Copyright MHBC Planning, 2020.

2	November 20, 2020	Issued for SPA	TT
1	October 15, 2020	Issued for Review	TT

Revision No. Date Issued / Revision By

PLANNING URBAN DESIGN & LANDSCAPE ARCHITECTURE
MHBC PLANNING

230-7050 WESTON ROAD
WOODBRIDGE, ON L4L 8G7
P: 905 761 5588 F: 905 761 5589
WWW.MHBCPLAN.COM

Stamp	Date	September 2020
Drawn By	TT	
Plan Scale	AS SHOWN	
File No.	16257 AG	
Checked By	PD	
Other		
Project	6333 Hurontario Street MISSISSAUGA, ON	
File Name	LANDSCAPE DETAILS	Dwg No. L-2