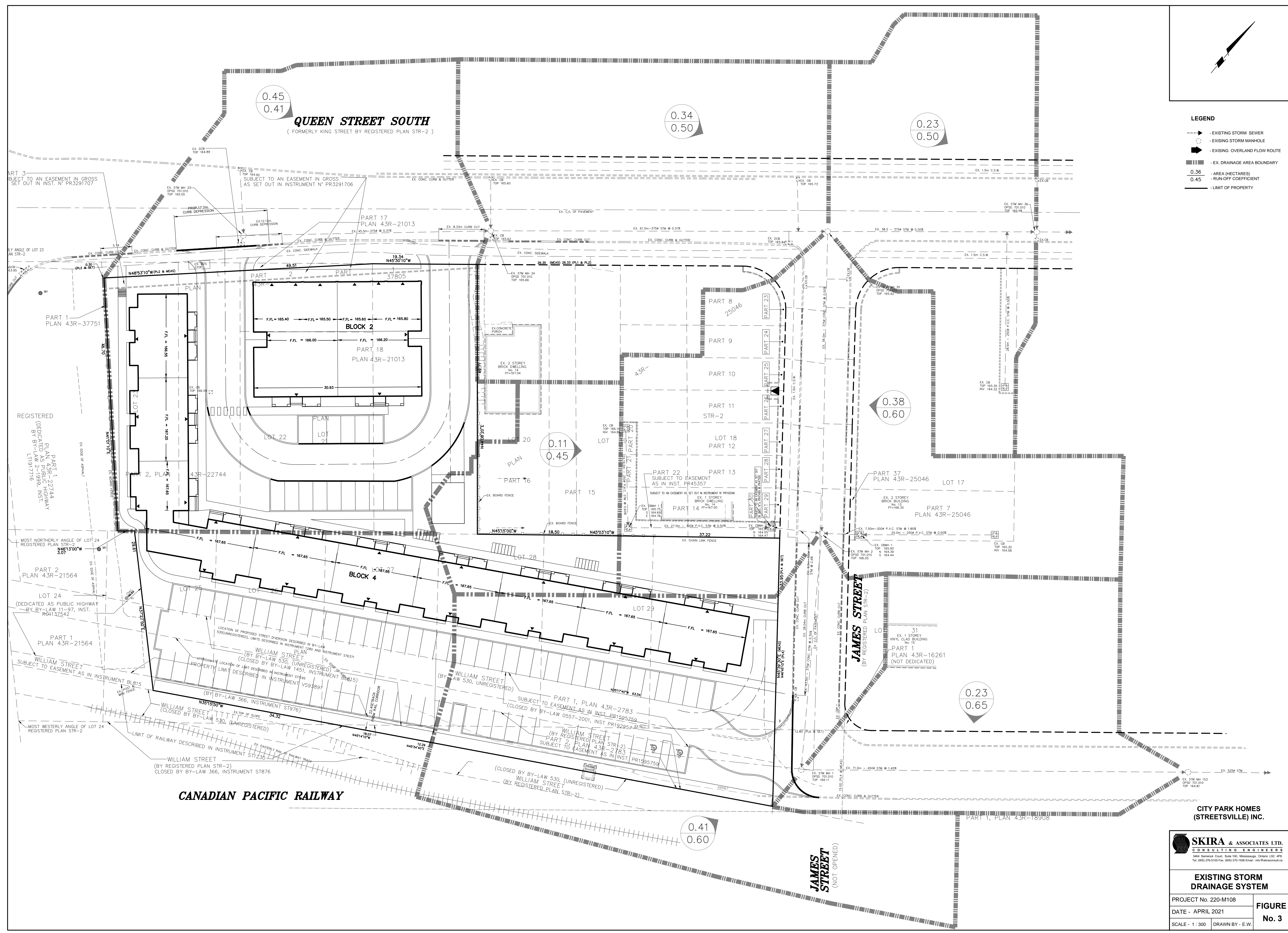


- LEGEND**
- - - - - EXISTING STORM SEWER
 - EXISTING STORM MANHOLE
 - ➔ EXISTING OVERLAND FLOW ROUTE
 - ▬ EX. DRAINAGE AREA BOUNDARY
 - 0.36 - AREA (HECTARES)
 - 0.45 - RUN-OFF COEFFICIENT
 - LIMIT OF PROPERTY



CITY PARK HOMES
(STREETSVILLE) INC.

SKIRA & ASSOCIATES LTD.
CONSULTING ENGINEERS
3664 Semenyk Court, Suite 100, Mississauga, Ontario L5C 4P8
Tel: (905) 276-6100 Fax: (905) 276-1906 Email: info@skira.com

EXISTING STORM DRAINAGE SYSTEM

PROJECT No. 220-M108
DATE - APRIL 2021
SCALE - 1:300 DRAWN BY - E.W.

FIGURE No. 3