

# TURNER FLEISCHER

Turner Fleischer Architects Inc.  
67 Lesmill Road  
Toronto, ON, M5B 2T8  
T 416-425-2222  
turnerfleischer.com

This drawing, as an instrument of service, is provided by and is the property of Turner Fleischer Architects Inc. The contractor must verify and accept responsibility for all dimensions and conditions on site and must notify Turner Fleischer Architects Inc. of any variations from the supplied information. This drawing is not to be copied, reproduced, or used for any other purpose without the written consent of Turner Fleischer Architects Inc. The architect is not responsible for the accuracy of any survey, structural, mechanical, electrical, etc., information shown on this drawing. Refer to the appropriate consultant's drawings before proceeding with the work. Construction must conform to all applicable codes and requirements of jurisdiction. The contractor working from drawings not specifically marked "For Construction" must assume full responsibility and bear costs for any corrections or damages resulting from his work.

- TOWER 1 (62 STOREYS)
- TOWER 2 (57 STOREYS)
- TOWER 3 (52 STOREYS)
- TOWER 4 (65 STOREYS)
- TOWER 5 (59 STOREYS)

#	DATE	ISSUED FOR	DESCRIPTION	CCU	BY
1	2021-11-26	ISSUED FOR OPA			

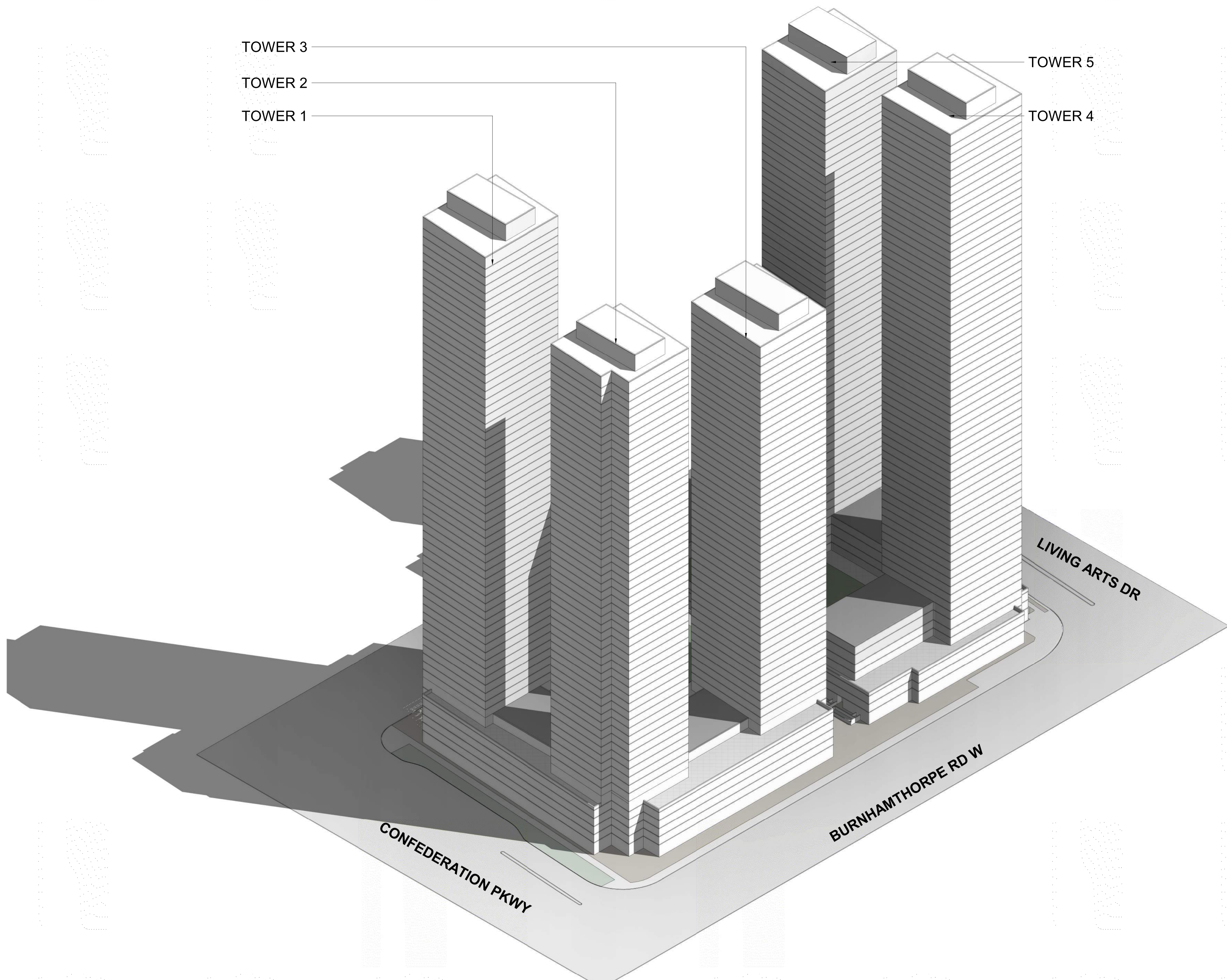
PROJECT  
**325 Burnhamthorpe Rd W**  
325 Burnhamthorpe Rd W  
Mississauga, ON  
L5B 3R2

DRAWING  
**3D PERSPECTIVES**

PROJECT NO.  
20-107CS  
PROJECT DATE  
DRAWN BY  
Author  
CHECKED BY  
Checker  
SCALE  
1 : 500



DRAWING NO. **OPA901** REV. **1**



TOWER 3  
TOWER 2  
TOWER 1

TOWER 5  
TOWER 4

3D PERSPECTIVE LOOKING NORTH