

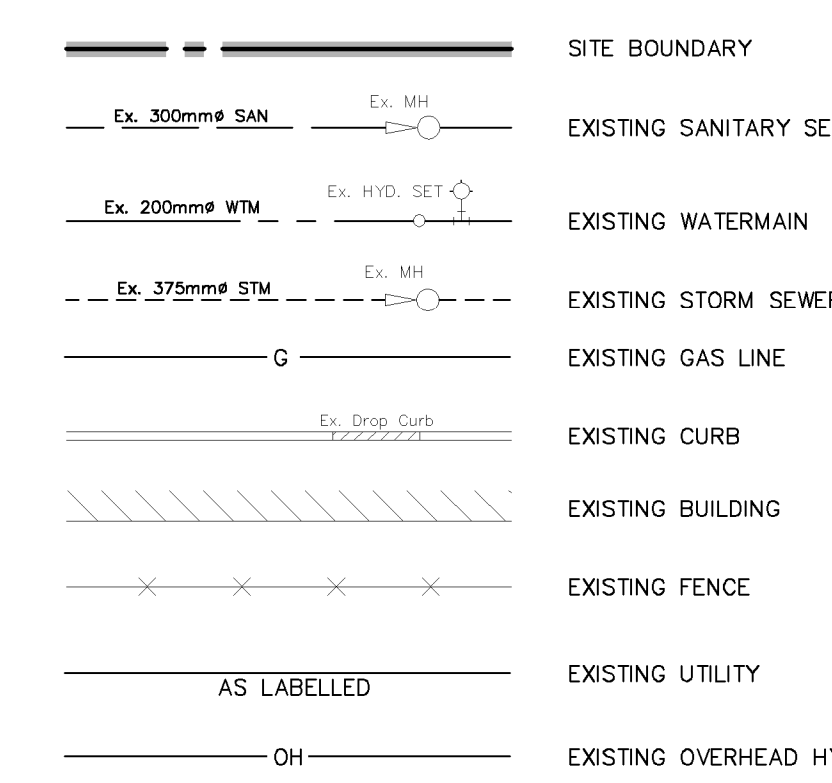
GEODETIC BM ELEV. = 115.617m
ELEVATIONS SHOWN ON THIS PLAN ARE RELATED TO GEODETIC DATUM AND ARE DERIVED FROM THE TOWN OF MISSISSAUGA BENCHMARKS: No. 1001, ELEVATION=123.221m No. 1059, ELEVATION=115.617

SITE BENCHMARK ELEV. = 115.14m
CONCRETE PIN IN SIDEWALK LOCATED ON SOUTH SIDE OF AGNES STREET.

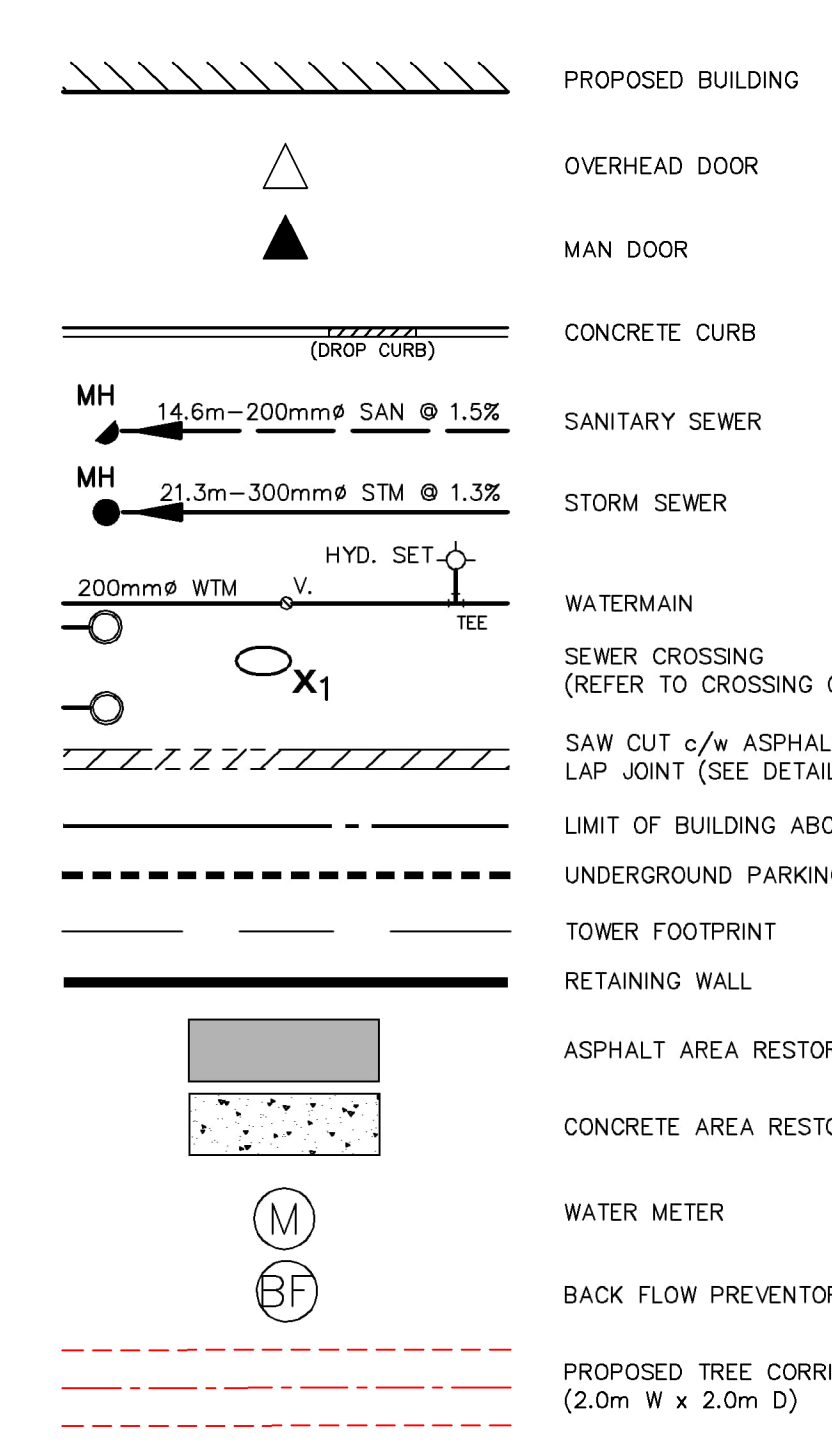
NOTE TO CONTRACTOR :
DO NOT SCALE DRAWINGS.
CONTRACTORS MUST CHECK AND VERIFY ALL DIMENSIONS AND REPORT ANY DISCREPANCIES TO THE ENGINEER BEFORE PROCEEDING WITH THE WORK.
ALL DRAWINGS REMAIN THE PROPERTY OF THE ENGINEER AND SHALL NOT BE REPRODUCED OR REUSED WITHOUT THE ENGINEER'S WRITTEN PERMISSION.
THE OWNER/ARCHITECT/CONTRACTOR IS ADVISED THAT M.T.E. CONSULTANTS INC. CANNOT CERTIFY ANY COMPONENT OF THE SITE WORKS NOT INSPECTED DURING CONSTRUCTION. IT IS THE RESPONSIBILITY OF THE GENERAL CONTRACTOR TO NOTIFY M.T.E. CONSULTANTS INC. PRIOR TO COMMENCEMENT OF CONSTRUCTION TO ARRANGE FOR INSPECTION.

- NOTE:**
1. PROPERTY-LINE IS APPROXIMATE ONLY.
 2. EXISTING TOPOGRAPHICAL INFORMATION PROVIDED BY J.D.BARNES.
 3. INVERTS DENOTED WITH "±" ARE TAKEN FROM AS-RECORDED PLAN AND PROFILE DRAWINGS COMPLETED BY CITY OF MISSISSAUGA AND ARE CONSIDERED APPROXIMATE ONLY. CONTRACTOR TO FIELD VERIFY AND REPORT ANY DISCREPANCIES TO ENGINEER.
 4. THIS PLAN IS PART OF A SET OF PLANS WHICH COMPRISE OF THE FOLLOWING: C1.1, C2.1, C2.2, C2.3, AND THE SWM REPORT.

LEGEND OF EXISTING FEATURES



LEGEND OF PROPOSED FEATURES



8.			
7.			
6.			
5.			
4.			
3.			
2.			
1.	OPA/ZBLA	LXQ	2022-09-16
No.	REVISION		BY YYYY-MM-DD



905-639-2552

NOT FOR CONSTRUCTION

CLIENT
INTENTIONAL CAPITAL

147 LIBERTY STREET TORONTO, ON

PROJECT
**65-71 AGNES STREET
29 STOREY CONDOMINIUM**
65-71 AGNES STREET MISSISSAUGA, ON

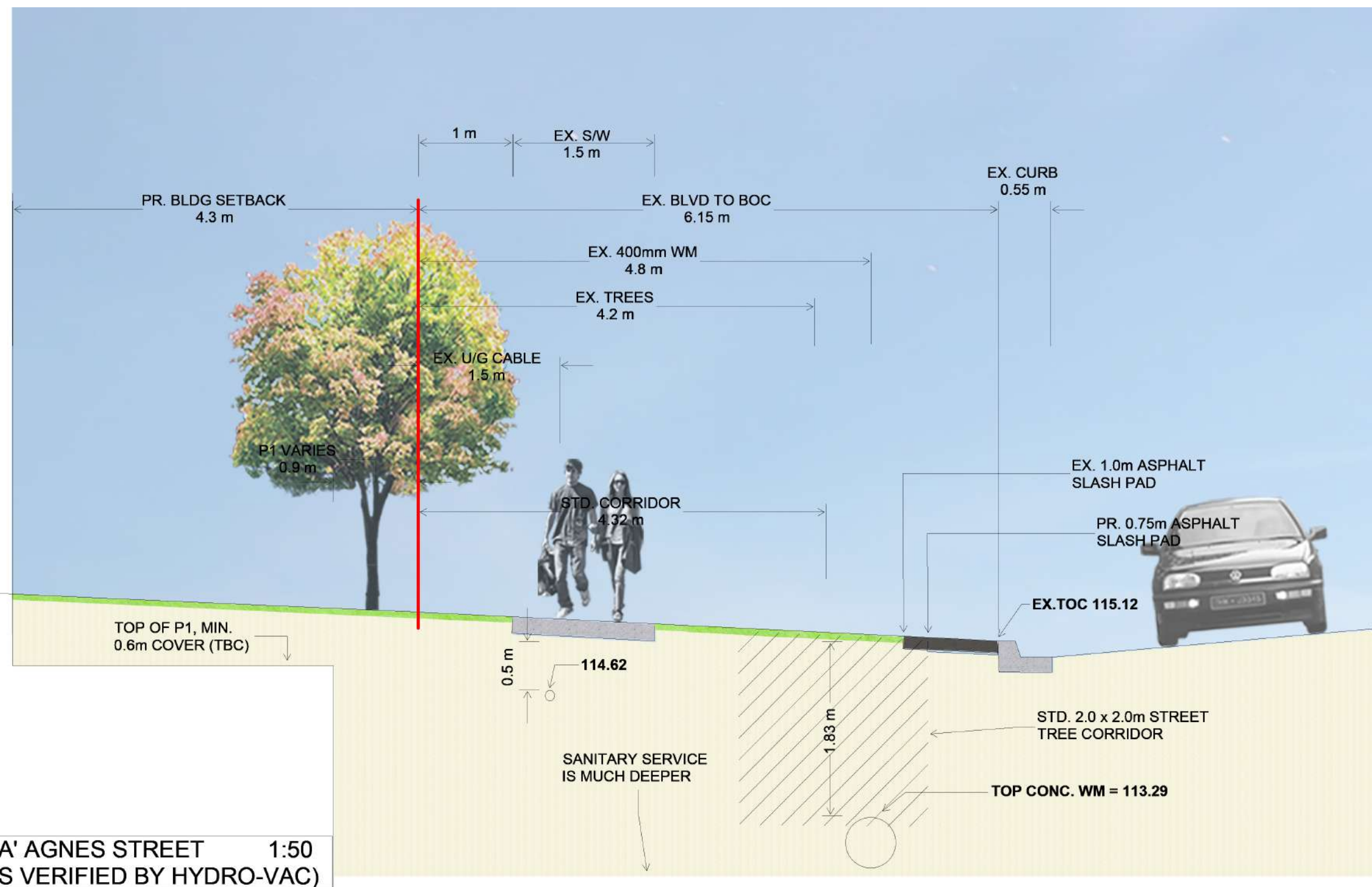
DRAWING
**PRELIMINARY
UTILITY
PLAN**

Project Manager	K.RAMSEWAK	Project No.	51157-100
Design By	TXL	Checked By	KRR
Drawn By	LXQ	Checked By	TXL/KRR
Surveyed By	OTHERS	Drawing No.	
Date	Apr.12/22	C2.3	
Scale	1:200	Sheet	of

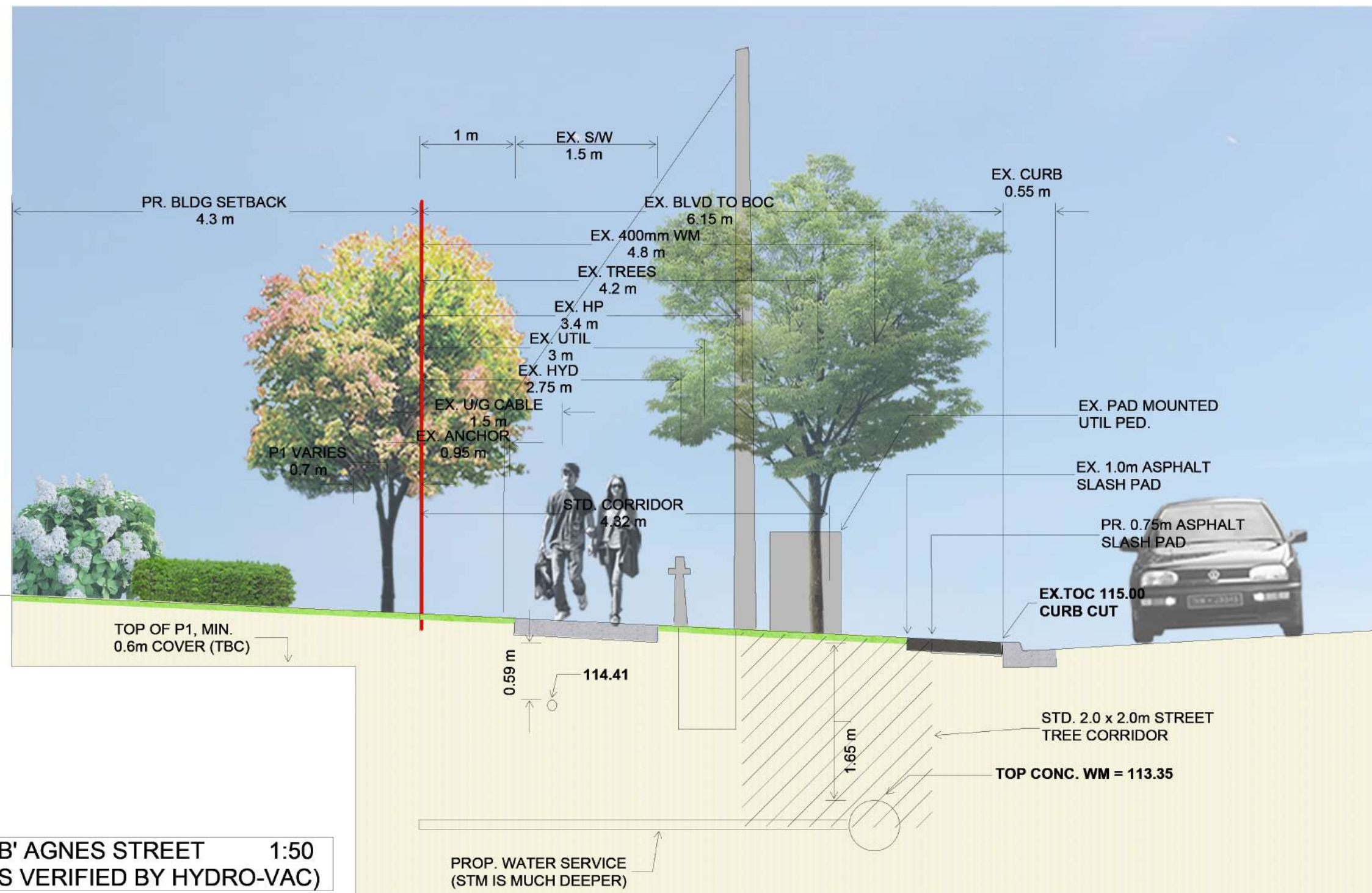
HEREBY CERTIFY THAT THE INFORMATION ON THIS PLAN IS COMPLETE, ACCURATE AND BASED ON PHYSICAL LOCATES BY HYDROVAC TEST PITS, AS PROVIDED BY PREMIER LOCATES, COMPLETED ON JULY 21, 2022



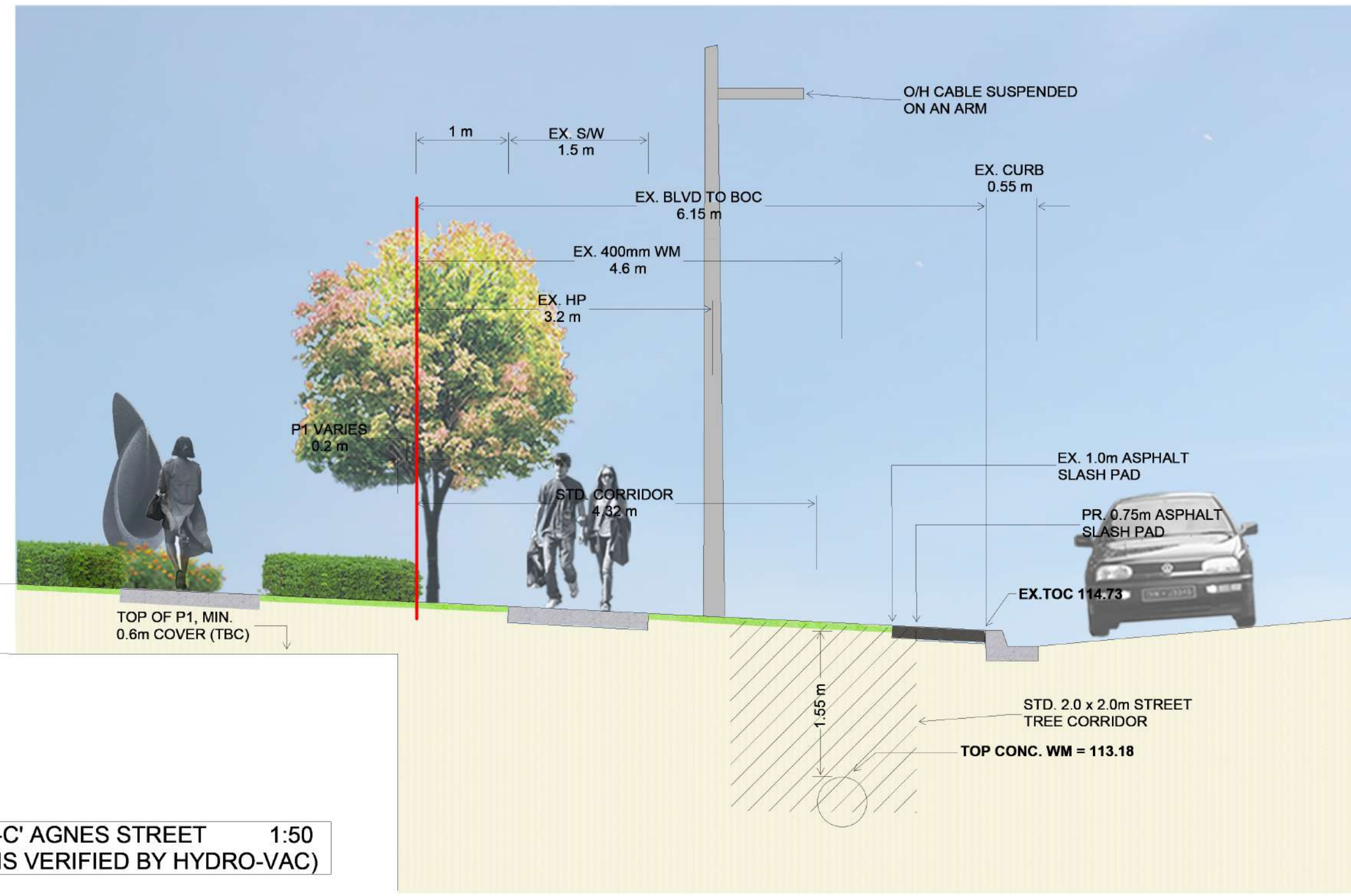
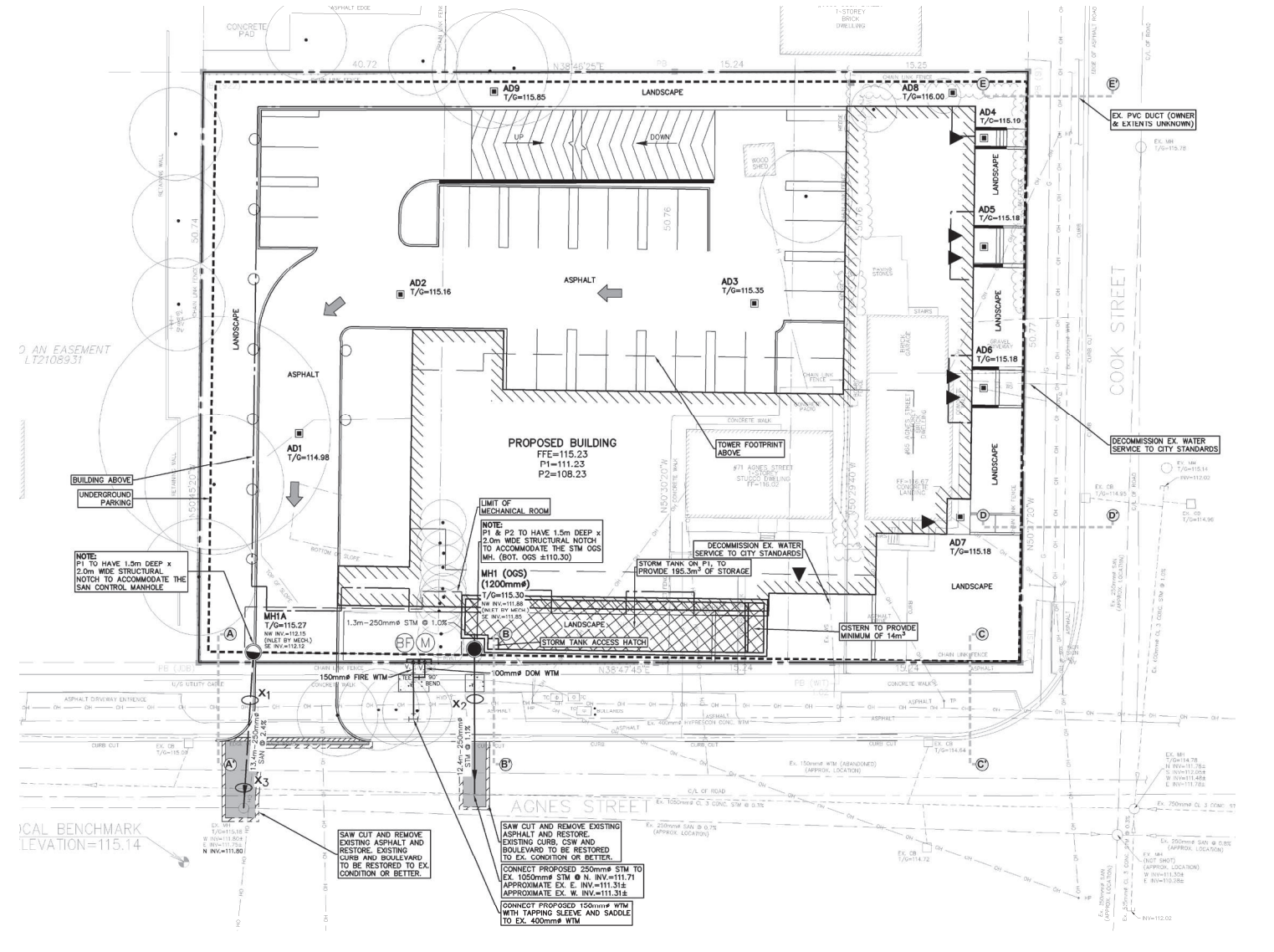
ENGINEER'S SIGNATURE



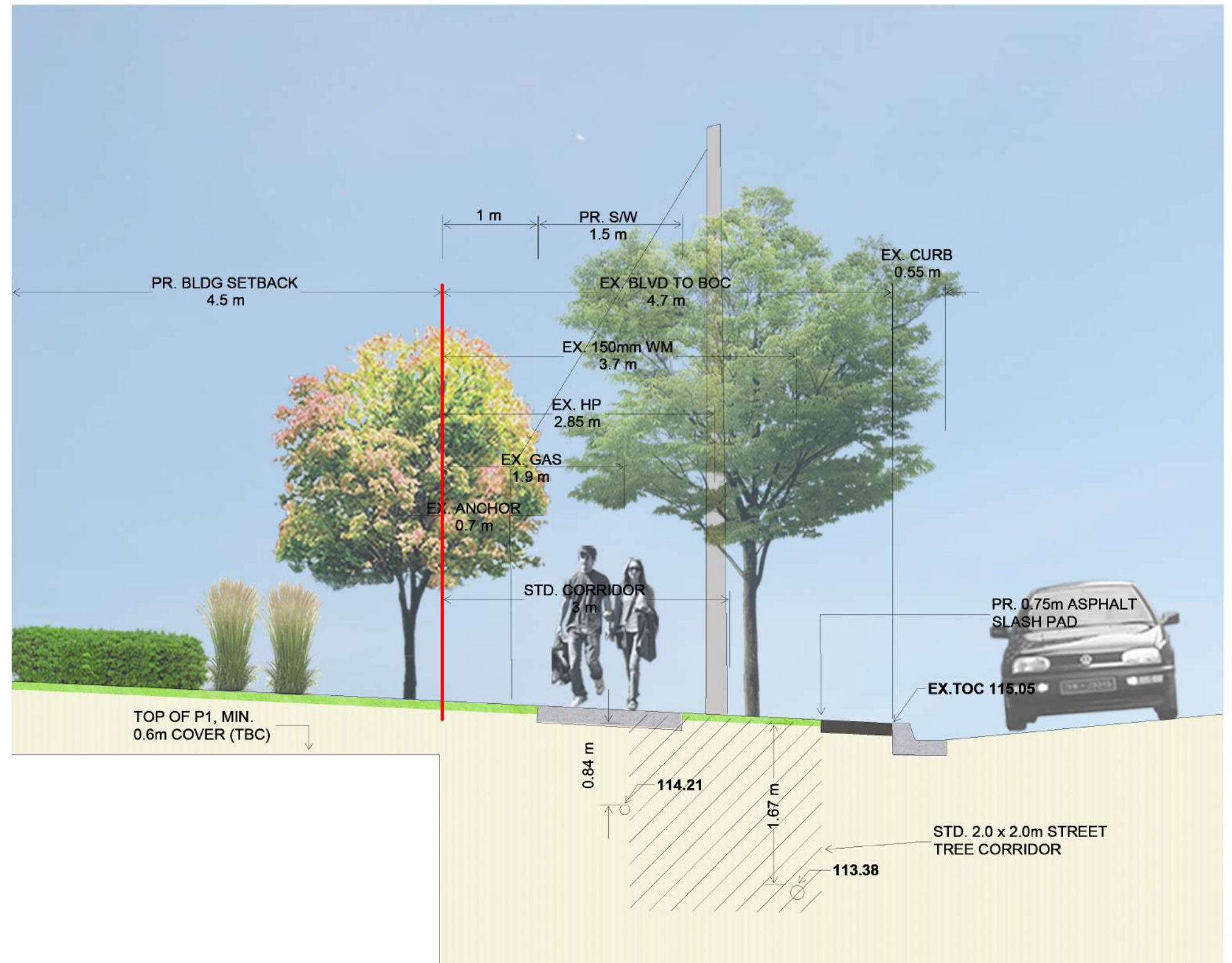
SECTION A-A' AGNES STREET 1:50
(ELEVATIONS VERIFIED BY HYDRO-VAC)



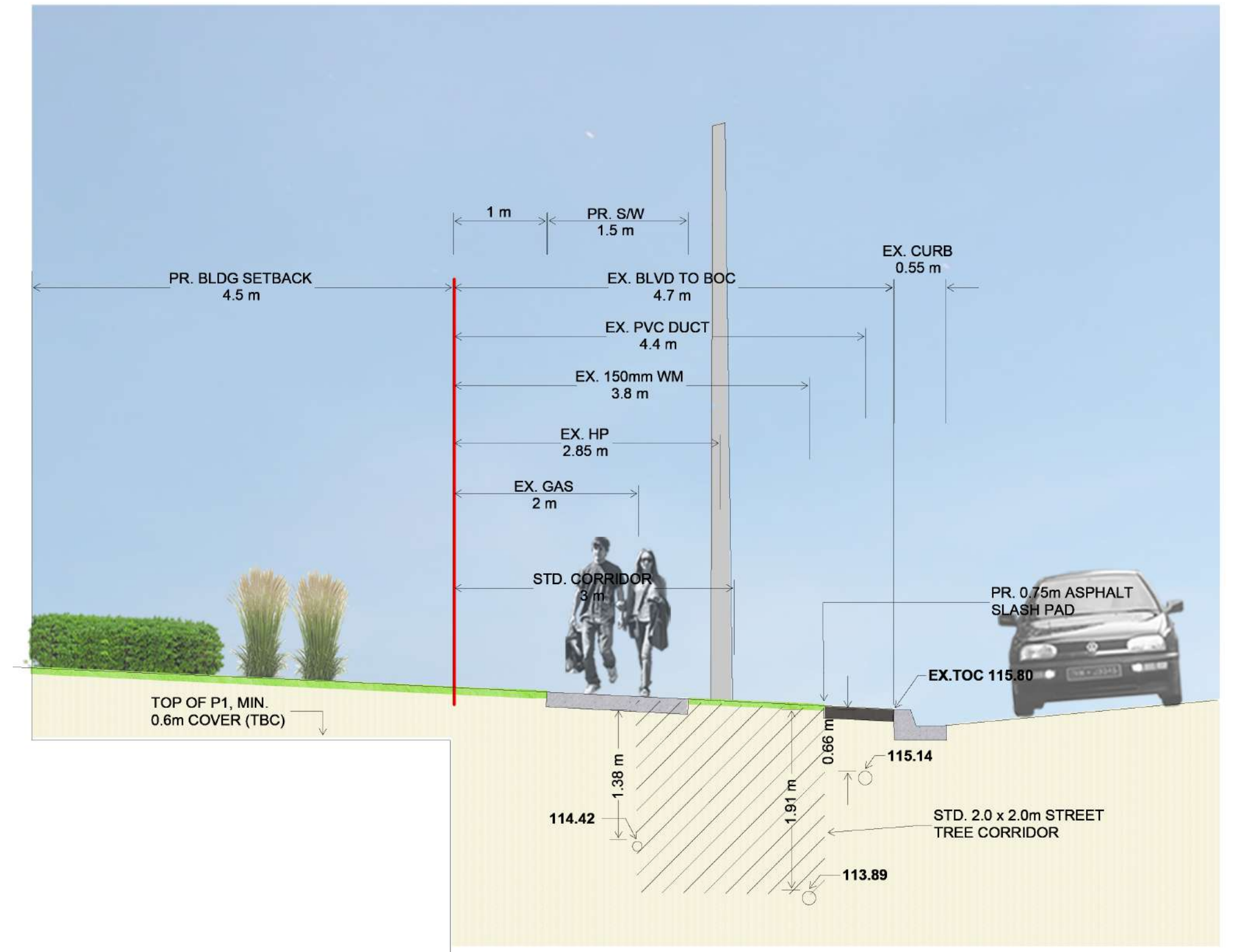
SECTION B-B' AGNES STREET 1:50
(ELEVATIONS VERIFIED BY HYDRO-VAC)



SECTION C-C' AGNES STREET 1:50
(ELEVATIONS VERIFIED BY HYDRO-VAC)



SECTION D-D' COOK STREET 1:50
(ELEVATIONS VERIFIED BY HYDRO-VAC)



SECTION E-E' COOK STREET 1:50
(ELEVATIONS VERIFIED BY HYDRO-VAC)



MTE HAS REVIEWED AND VERIFIED
THE GEODETIC ELEVATIONS
SHOWN ON THIS PLAN

CIVIL ENGINEER
MTE CONSULTANTS INC.
1016 SUTTON DRIVE, UNIT A
BURLINGTON, ON L7L 6B8
TEL: (905) 639-2552 WEBSITE: mte85.com



DATE : August 9, 2022
SCALE : 1:50
SUBJECT TO CHANGE DURING DESIGN
DEVELOPMENT AND CONSTRUCTION

65-71 AGNES STREET, MISSISSAUGA | CROSS SECTIONS

