

CONTRACTOR SHALL CHECK ALL DIMENSIONS ON THE WORK AND REPORT ANY DISCREPANCY TO THE CONSULTANT BEFORE PROCEEDING. THIS DRAWING IS NOT TO BE USED FOR CONSTRUCTION UNTIL AUTHORIZED IN WRITING BY CONSULTANT.



REVISION		
NO.	DATE	DESCRIPTION
1	2022.12.07	ISSUED FOR OPAZBA

**B+H Architects**  
 320 Bay Street, Suite 200  
 Toronto, ON M5H 4A6  
 T416.596.2299 F416.586.0599



LANDSCAPE ARCHITECT:  
**BAKER TURNER INC.**  
 2010 Winston Park Drive, Suite 234  
 Oakville, ON L6H 5R7  
 T/289.291.7620

TRAFFIC ENGINEER:  
**BA CONSULTING GROUP LTD.**  
 300-45 St. Clair Avenue W.  
 Toronto, ON M4V 1K9  
 T/416.961.7110

PLANNER:  
**URBAN STRATEGIES INC.**  
 197 Spadina Ave.  
 Toronto, ON M5T 2C8  
 T/416.304.9004

CIVIL ENGINEER:  
**URBANTECH CONSULTING**  
 14th Ave. Unit 3780  
 Markham, ON L3R 3T7  
 T/905.946.9461

SURVEYOR:  
**J.D. BARNES LIMITED**  
 401 Wheelabrator Way, Suite A  
 Milton, ON L9T 3C1  
 T/905.875.9955

HERITAGE:  
**ERA ARCHITECTS INC.**  
 625 Church St. Unit 600  
 Toronto, ON M4Y 2G1  
 T/416.963.4497

OWNER:  
**CENTRE CITY CAPITAL  
 FRAM + SLOKKER  
 KILMER INFRASTRUCTURE**

PROJECT:  
**42 PORT**

91 - 93, 99 LAKESHORE ROAD E. AND 42  
 PORT STREET E., PORT CREDIT,  
 MISSISSAUGA

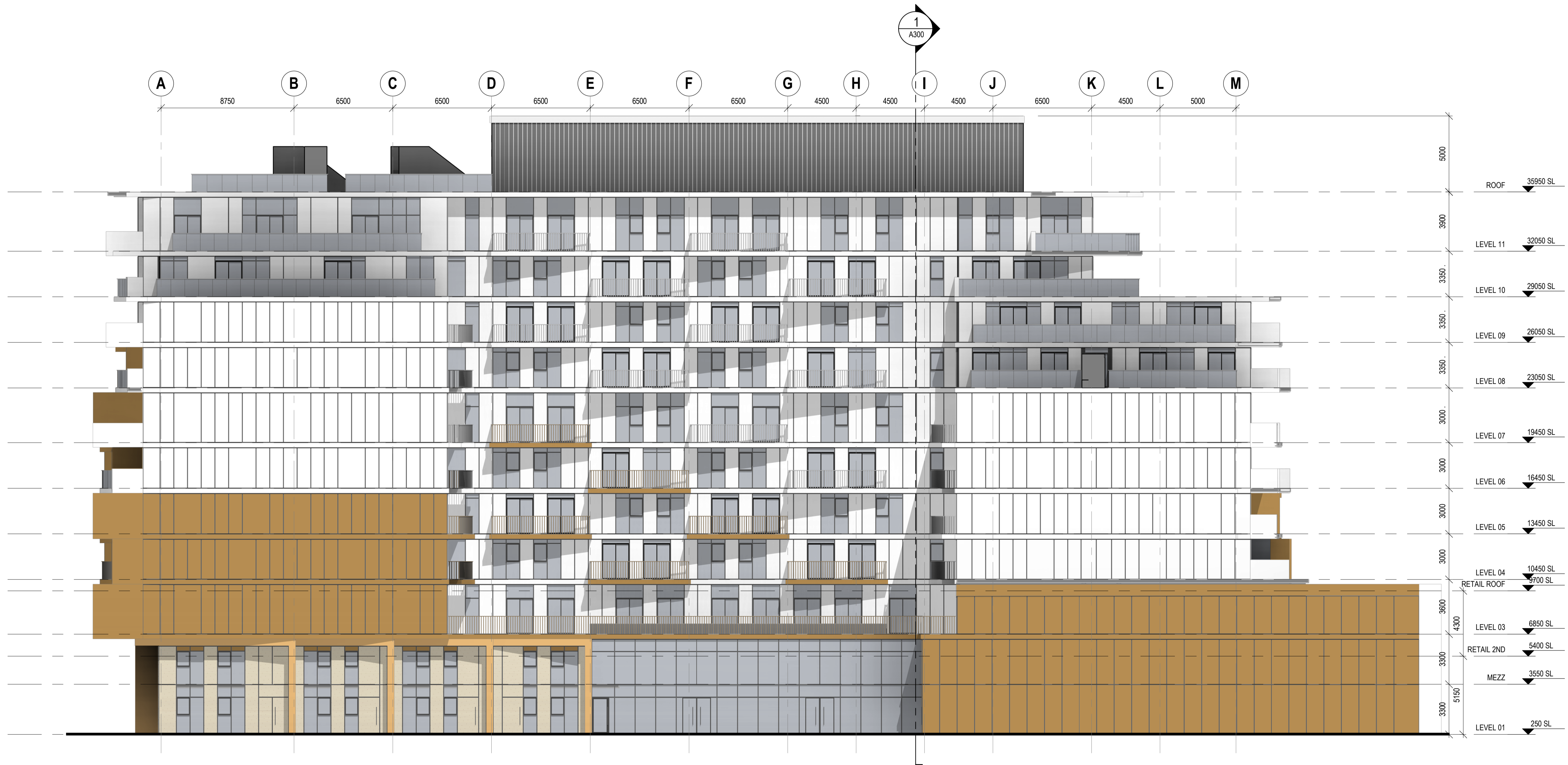
SHEET CONTENTS:  
**EAST ELEVATION**

PROJECT NUMBER:  
**2111111**

DRAWING SCALE:  
**1 : 150**

DRAWN BY: Author CHECKED BY: Checker DATE: 12/07/22

SHEET NO: **A401** REV: **1**



**1 EAST ELEVATION**  
 1 : 150