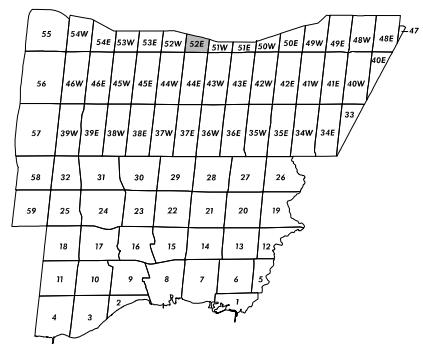


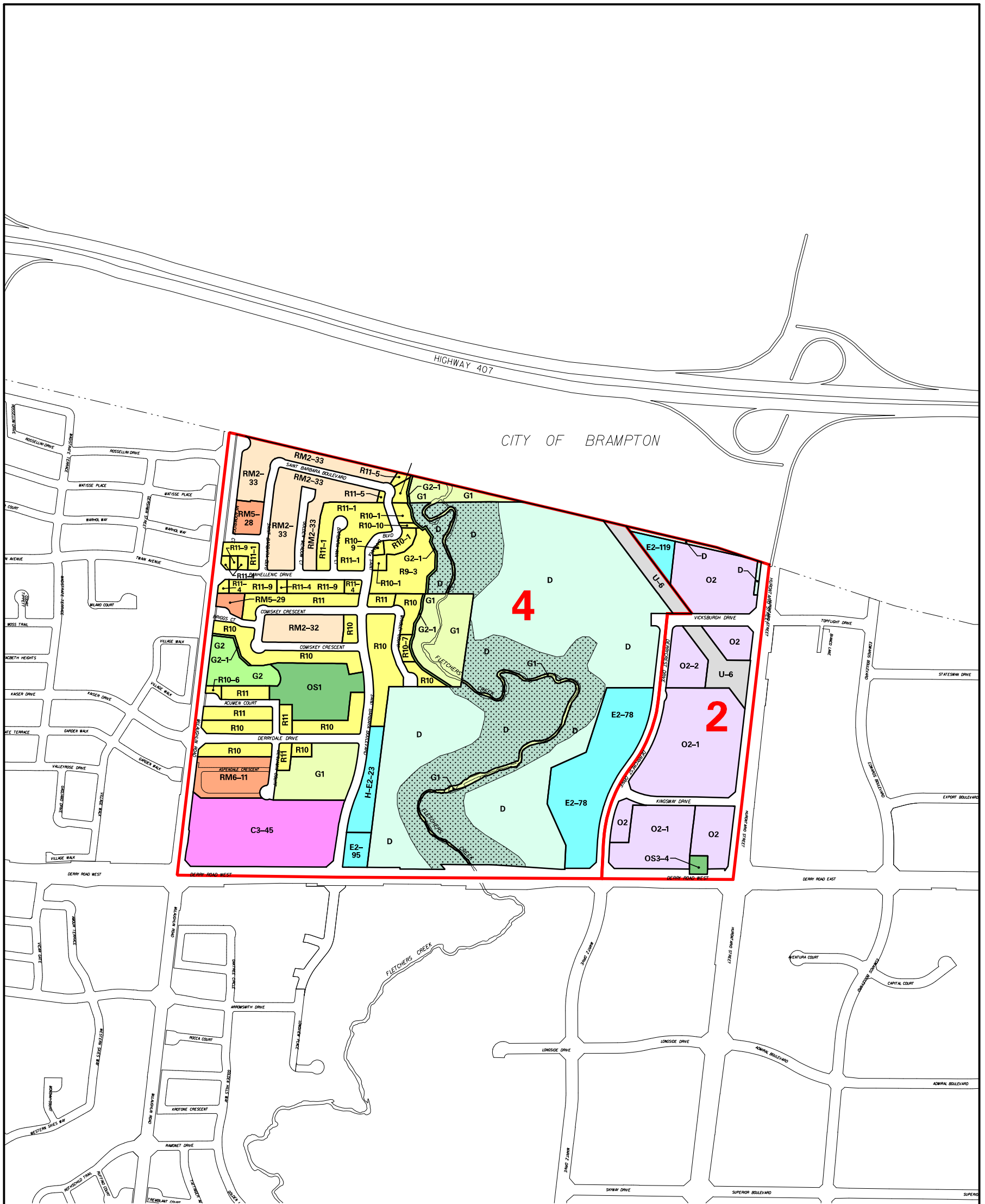
52W

51W



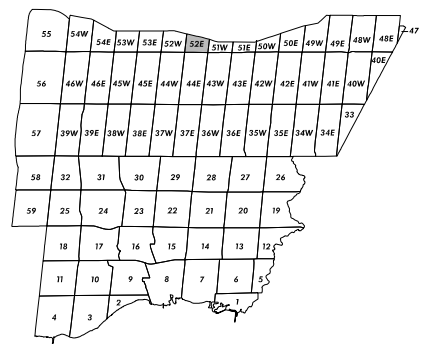
Parking Precinct
 Greenlands Overlay
 Zoning Notation Example:
 R4-12 = R4-Exception 12

Zoning Map 52E
 Schedule "B" To
 By-law No. 0225-2007
 Revised: 2022 June 30



52W

51W



- Parking Precinct
 - Greenlands Overlay
- Zoning Notation Example:
R4-12 = R4-Exception 12

**Zoning
Map 52E**

Schedule "B" To
By-law No. 0225-2007

Revised: 2022 June 30

ZONING BY-LAW 0225-2007

ZONING CATEGORIES

ZONES

| | | | |
|---------------|---|---------------|---|
| Residential |  | R1 - R16 | Detached Dwellings |
| |  | RM1, RM2, RM3 | Semi-Detached |
| |  | RM7 | Detached, Semi-Detached, Duplex and Triplex |
| |  | RM4, RM5, RM6 | Townhouse |
| |  | RM8 - RM12 | Back to Back, Stacked Townhouses |
| |  | RA1 - RA5 | Apartment, Long-Term Care, Retirement Buildings |
| Office |  | O1 | Minor Office |
| |  | O2 | Major Office |
| |  | O3 | General Office |
| Commercial |  | C1 | Convenience Commercial |
| |  | C2 | Neighbourhood Commercial |
| |  | C3 | General Commercial |
| |  | C4 | Mainstreet Commercial |
| |  | C5 | Motor Vehicle Commercial |
| Downtown Core |  | CC1 | Core Commercial |
| |  | CC2, CC4 | Mixed Use |
| |  | CC3 | Mixed Use - Transition Area |
| |  | CCO | Office |
| |  | CCOS | Open Space |
| Employment |  | E1 | Employment in Nodes |
| |  | E2 | Employment |
| |  | E3 | Industrial |
| Open Space |  | OS1 | Community Park |
| |  | OS2 | City Park |
| |  | OS3 | Cemetery |
| Greenlands |  | G1 | Natural Hazards |
| |  | G2 | Natural Features |
| |  | | Greenlands Overlay |
| Parkway Belt |  | PB1, PB2 | Parkway Belt |
| Utility |  | U | Utility |
| Institutional |  | I | Hospital and University / College |
| Development |  | D | Existing Use |
| Buffer |  | B | Buffer, Berm, Fence |
| Airport |  | AP | Lester B. Pearson International Airport |