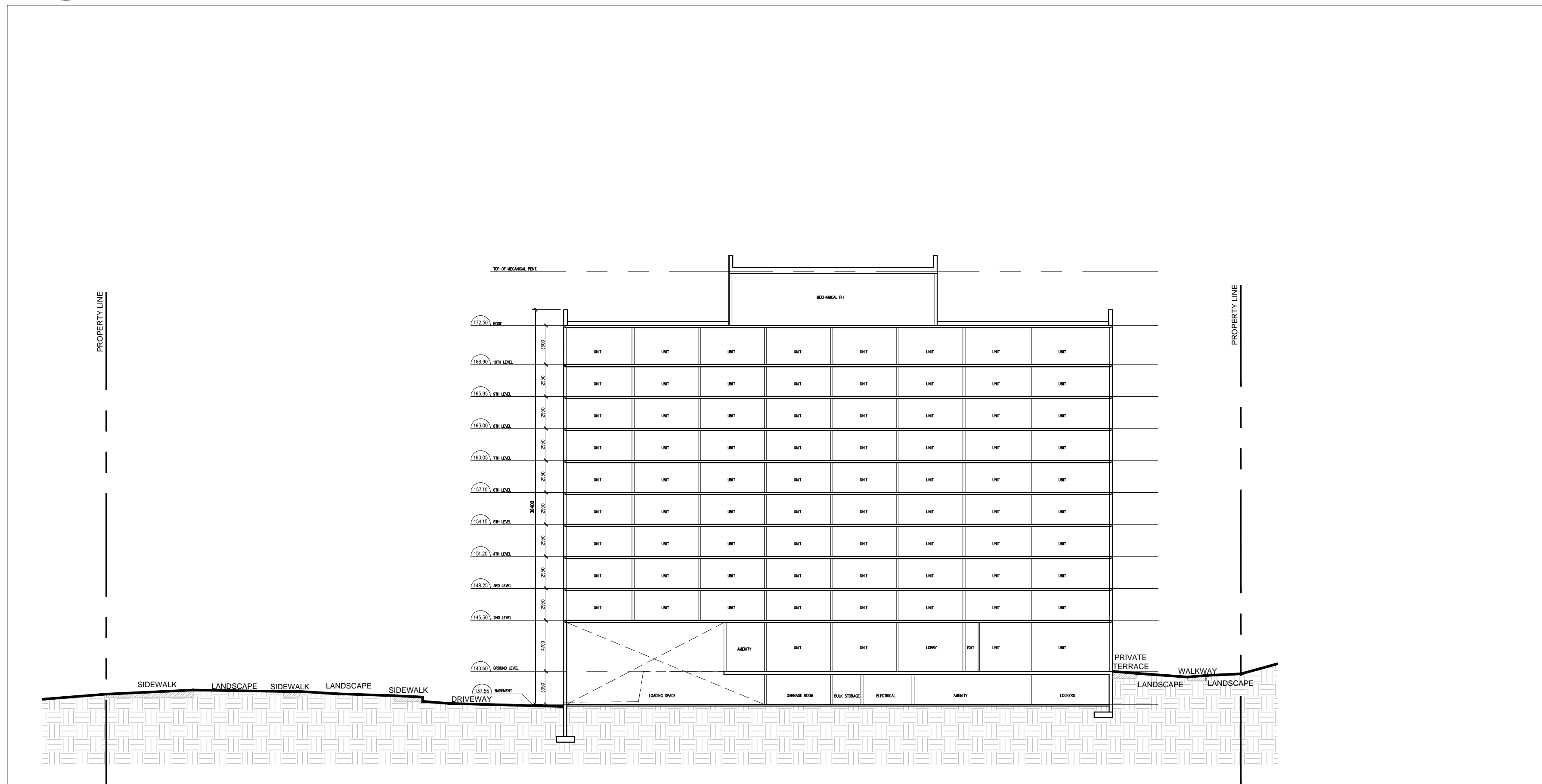


2 section 2-2
A501 1:300



1 section 1-1
A501 1:300

The drawings are the property of Architecture Unfolded. The drawing and all associated documents are an instrument of service by the Designer. The drawing and the information contained therein may not be reproduced in whole or in part without prior written permission of the designer.

These Contract Documents are the property of the architect. The architect bears no responsibility for the interpretation of these documents by the Contractor. Upon written application the architect will provide written/graphic clarification or supplementary information regarding the intent of the Contract Documents. The architect will review Shop Drawings submitted by the Contractor for design conformance only.

Drawings are not to be scaled for construction. Contractor to verify all existing conditions and dimensions required to perform the work and report any discrepancies with the Contract Documents to the architect before commencing work.

Positions of exposed or finished mechanical or electrical devices, fittings, and fixtures are indicated on architectural drawing. The locations shown on the architectural drawings govern over the Mechanical and Electrical drawings. These items not clearly located will be located as directed by the architect.

These drawings are not to be used for construction unless noted below as "based for Construction".

All work to be carried out in conformance with the Code and bylaws of the authorities having jurisdiction.

The Designer of these plans and specifications gives no warranty or representation to any party about the constructability of the represented by them. All contractors or subcontractors must satisfy themselves when bidding and at all times that they can properly construct the work represented by these plans.

notes:

2. ZBA Submission 23-05-24
1. ZBA Submission 09-11-22
submissions: dd-mm-yy

architectural team :

mark zwicker
ihab daakour
olena kobets-singh

planning:
Urban Strategies Inc.
177 Spadina Ave. suite 400, Toronto, Ontario M5T 2C8

landscape:
Land Art Design
53 Mexico Avenue, Studio B, Toronto ON M8V 1R3

site services & traffic:
LEA Consulting Ltd.
425 Cochrane Drive, suite 100, Markham, Ontario, L3R 9B9

engineering:
Grounded Engineering Inc.
1 Barrigan Drive, Toronto, M4H 1G3

wind:
S/R Consulting (Canada) Ltd
100 Stone Road West, suite 201, Guelph, Ontario N1G 5L3

waste:
Pragmattech Waste Solutions
264 Bronte St. S. Unit 16 Milton, ON L7L 1Y8

geotechnical & environmental:
Terraprobe
11 Indell Lane, Brampton, Ontario, L6L 3Y3

surveyor:
Schaeffler Davidson Bennett Ltd.
64 Jardin Drive, Concord, Ontario, L4K 3P3

owner:
Starlight Investments
1400-3280 Bloor Street West, Centre Tower, Toronto, Ontario M8X 2X3

project:
Pacific way
3480 Havenwood Drive and 1485 Williamsport Drive
Mississauga, Ontario L4X 2M8

sections

2021 date:
as noted scale:
21-15 project:
NA drawn by:

project north

drawing number:

A501