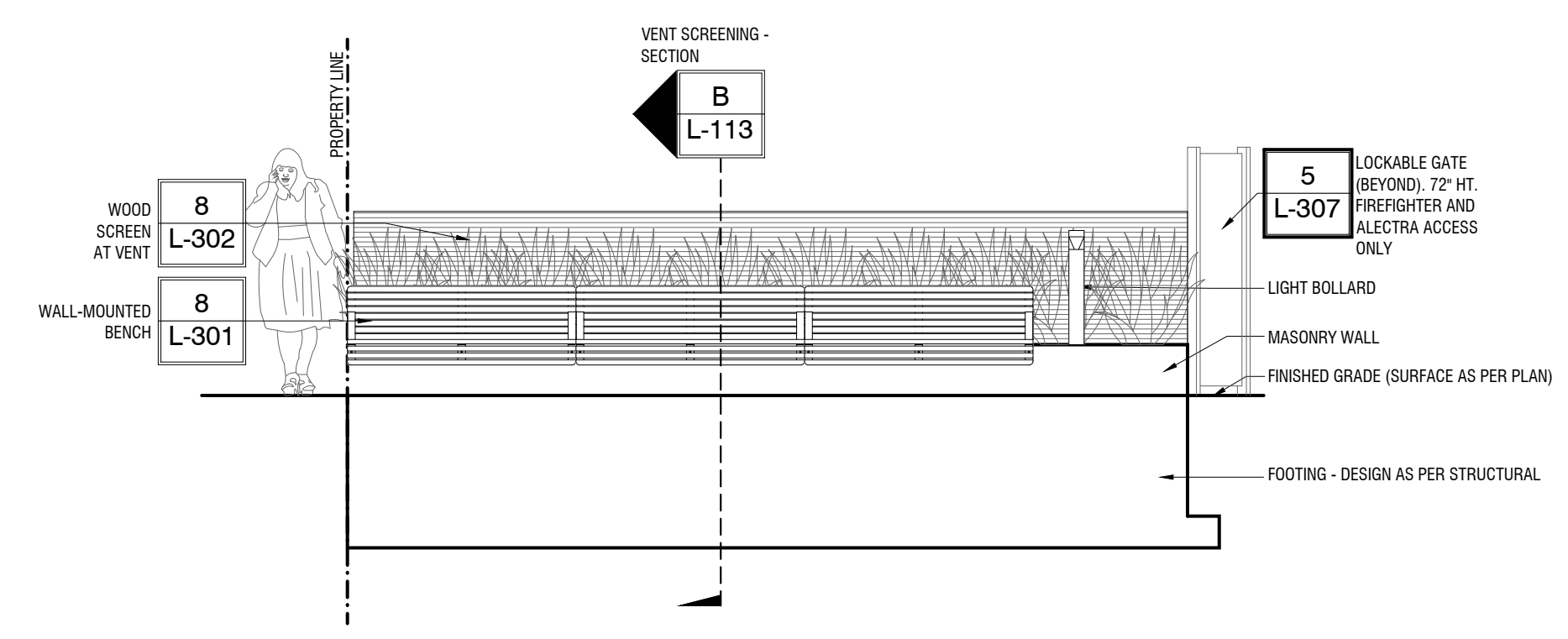


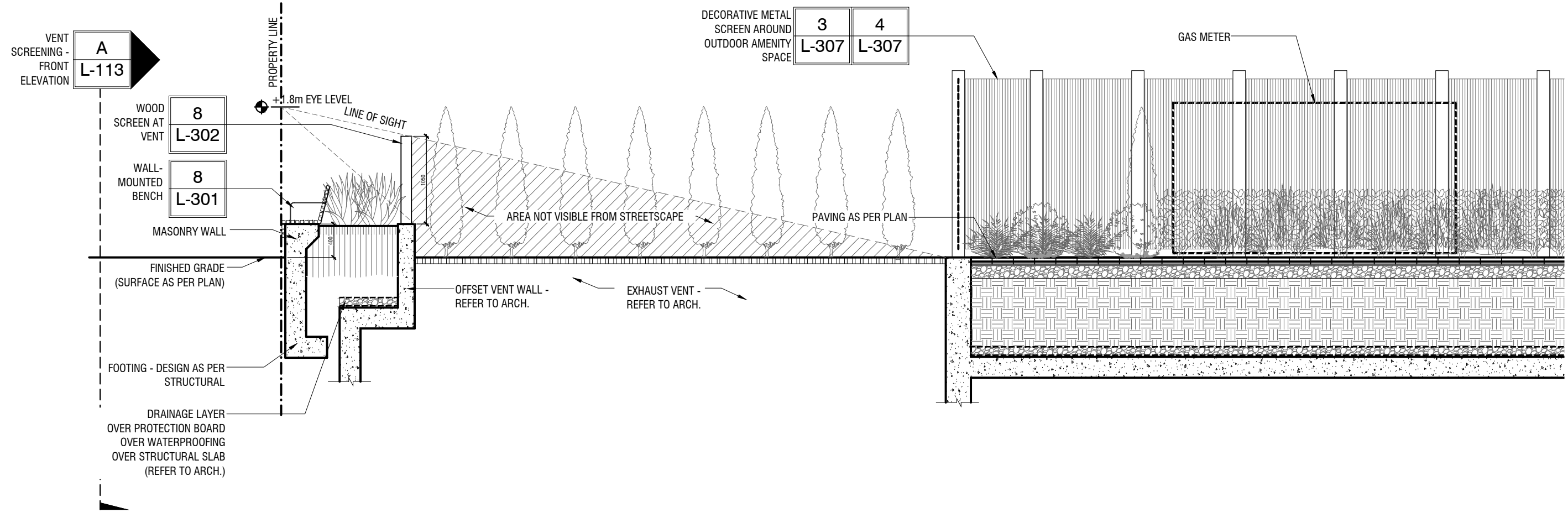
Owner: Edenshaw Fairview Developments Limited
Owner's Address: 129 Lakeshore Rd E, Suite 201
Mississauga, Ontario L5G 1E5

Architect - CORE Architects
Civil Eng - WSP
Mech Eng -
Transportation - LEA
Interior - Ceconi Simone
Planning - Sajeki Planning
Arborist - Kuntz Forestry
Wind - RWDI

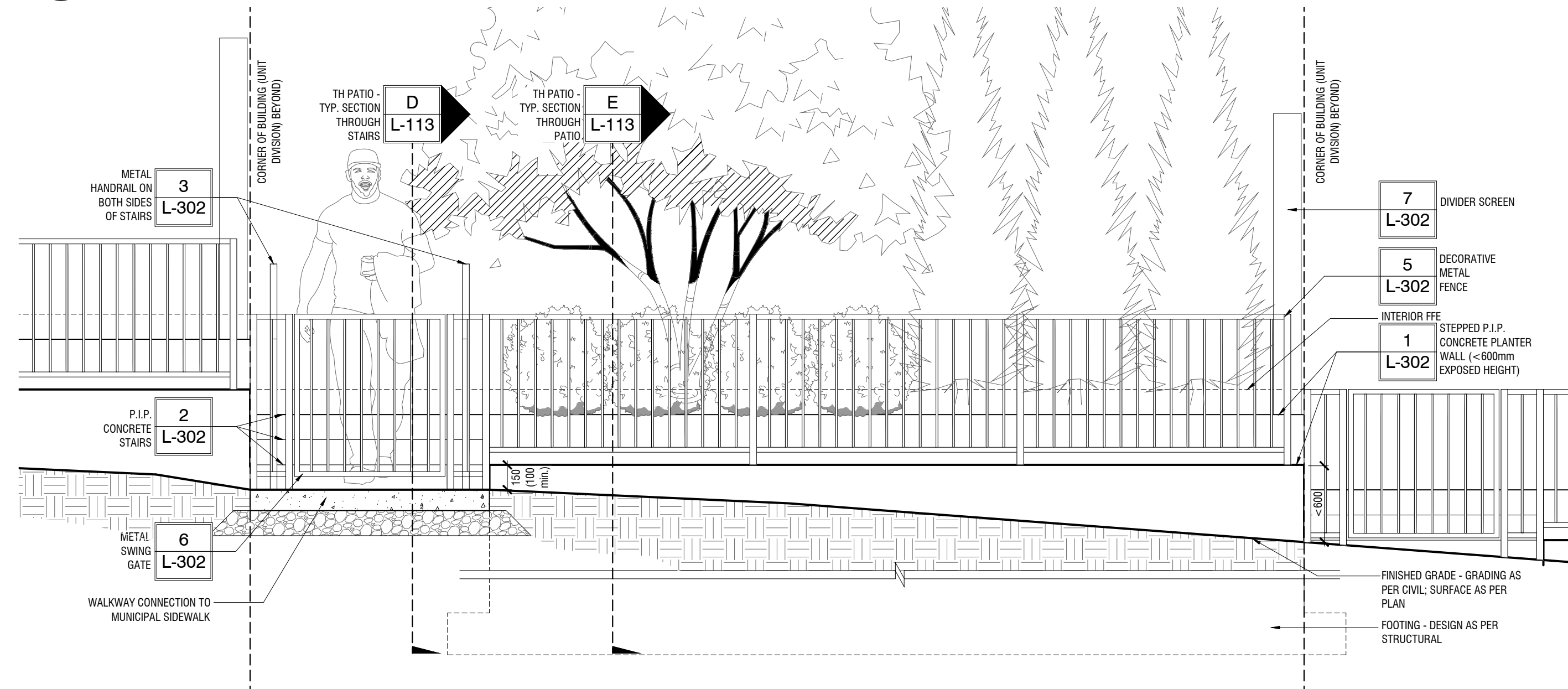
- GENERAL NOTES**
- All dimensions in millimetres (mm)
 - Verify all dimensions
 - Do not scale drawings
 - Check drawings against specifications
 - Use the latest revised drawings only
 - Report any discrepancies to the Landscape Architect before proceeding
 - Drawings and specifications are the property of the Landscape Architect, and must be returned upon completion of the work



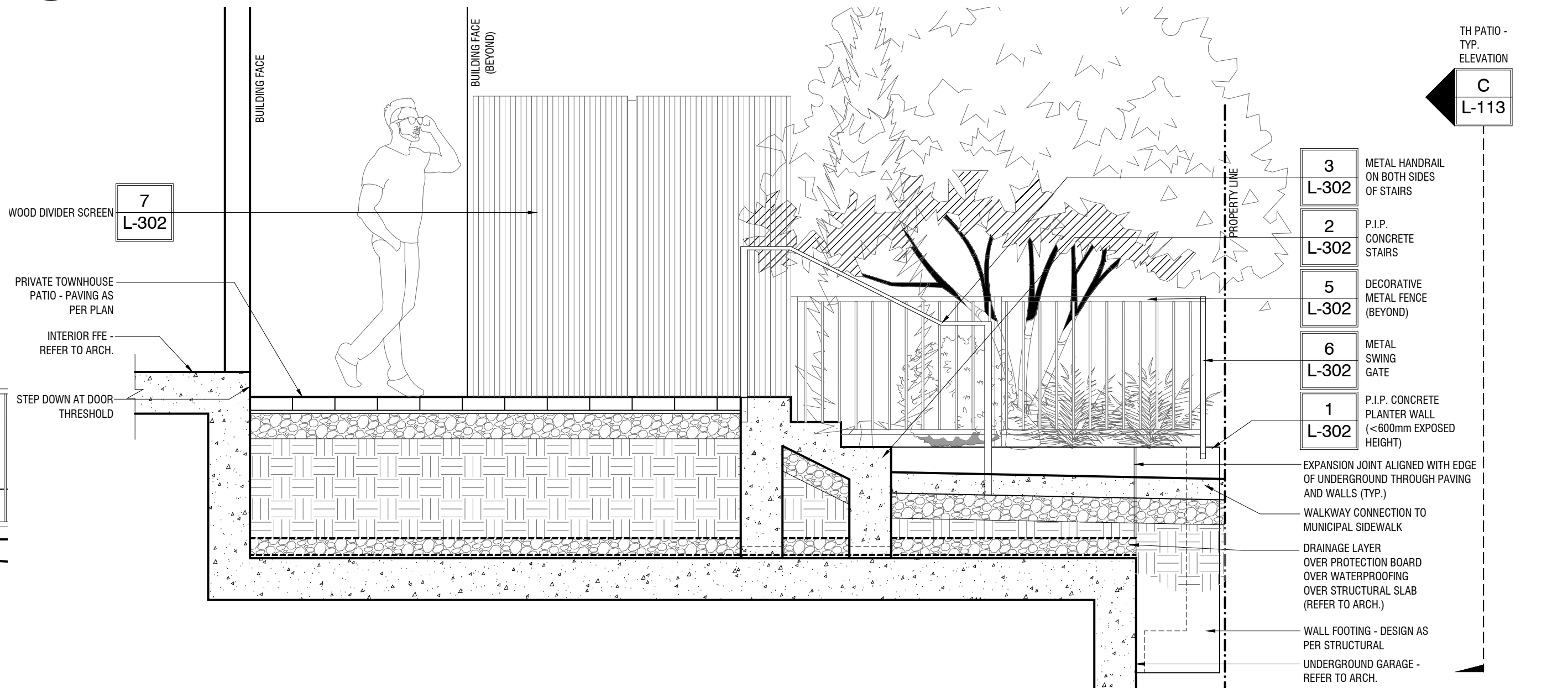
A VENT SCREENING - FRONT ELEVATION
L-113 1:50 P-RE-402-10



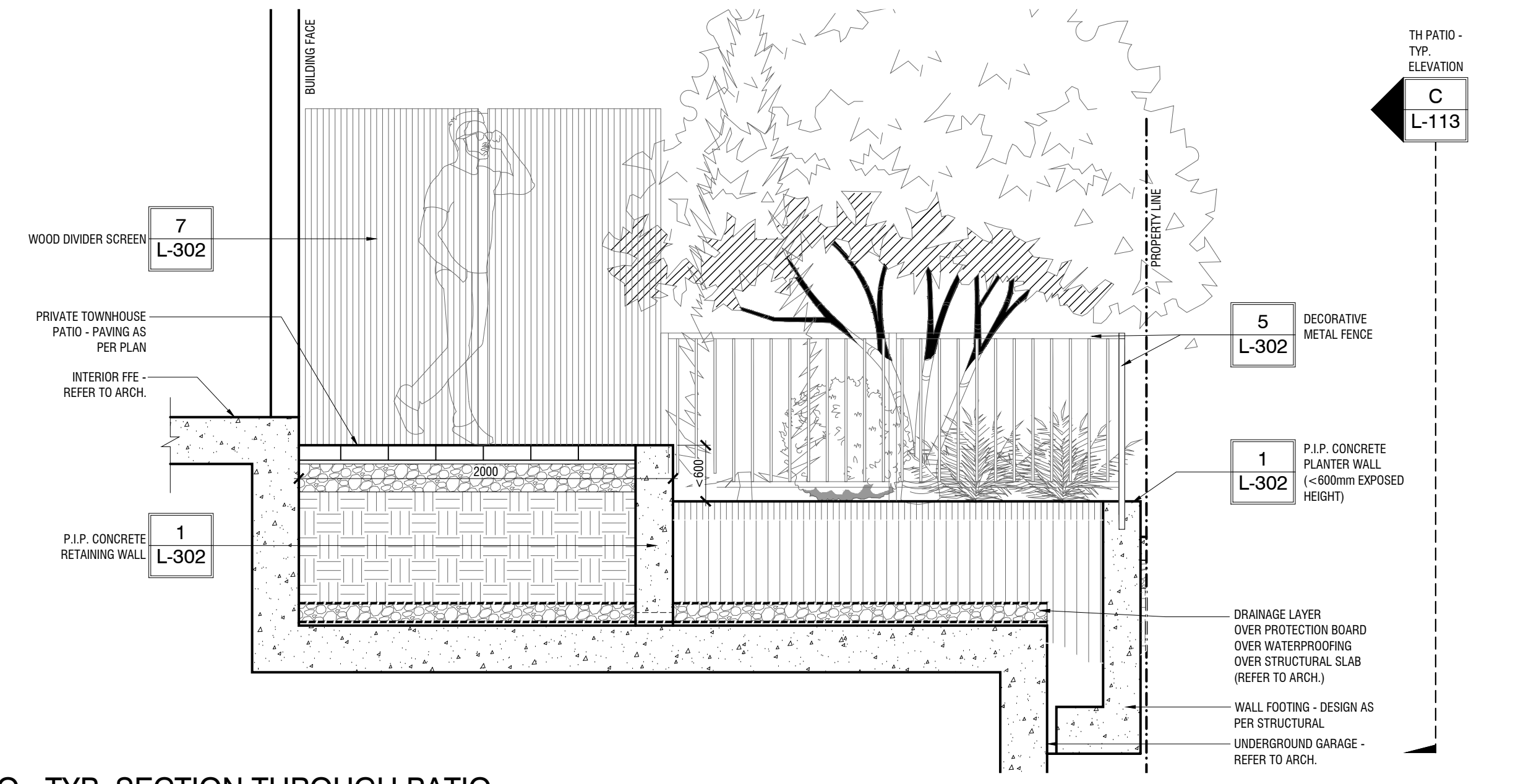
B VENT SCREENING - SECTION
L-113 1:50 P-RE-402-11



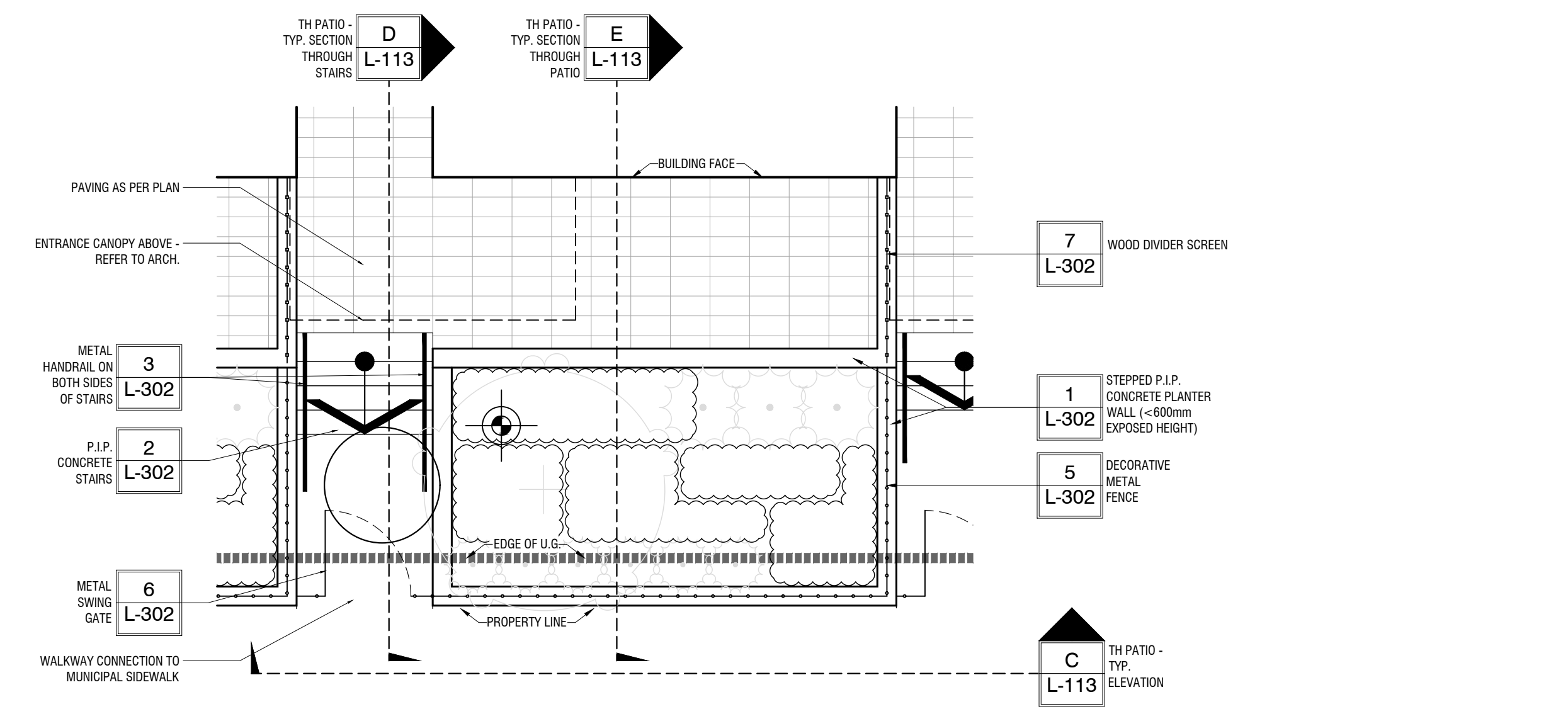
C TH PATIO - TYP. ELEVATION
L-113 1:25 P-RE-402-12



D TH PATIO - TYP. SECTION THROUGH STAIRS
L-113 1:25 P-RE-402-13



E TH PATIO - TYP. SECTION THROUGH PATIO
L-113 1:25 P-RE-402-14



1 TH PATIO - TYP. PLAN
L-113 1:50 P-RE-402-15

REV	DATE	DESCRIPTION	INITIAL
21	AUG.23.2024	Issued for SPA	KW
20	JUL.11.2024	Issued for SPA	KW
19	JAN.22.2024	Issued for SPA	RH
18	JAN.26.2023	Issued for SPA	AAM
14	JUL.19.2022	Issued for SPA	AAM
13	JUL.06.2022	Issued for Tender	AAM
11	JAN.10.2022	Issued for SPA	AAM
10	OCT.25.2021	Progress Set	AAM
7	JUL.15.2021	Issued for SPA	AAM