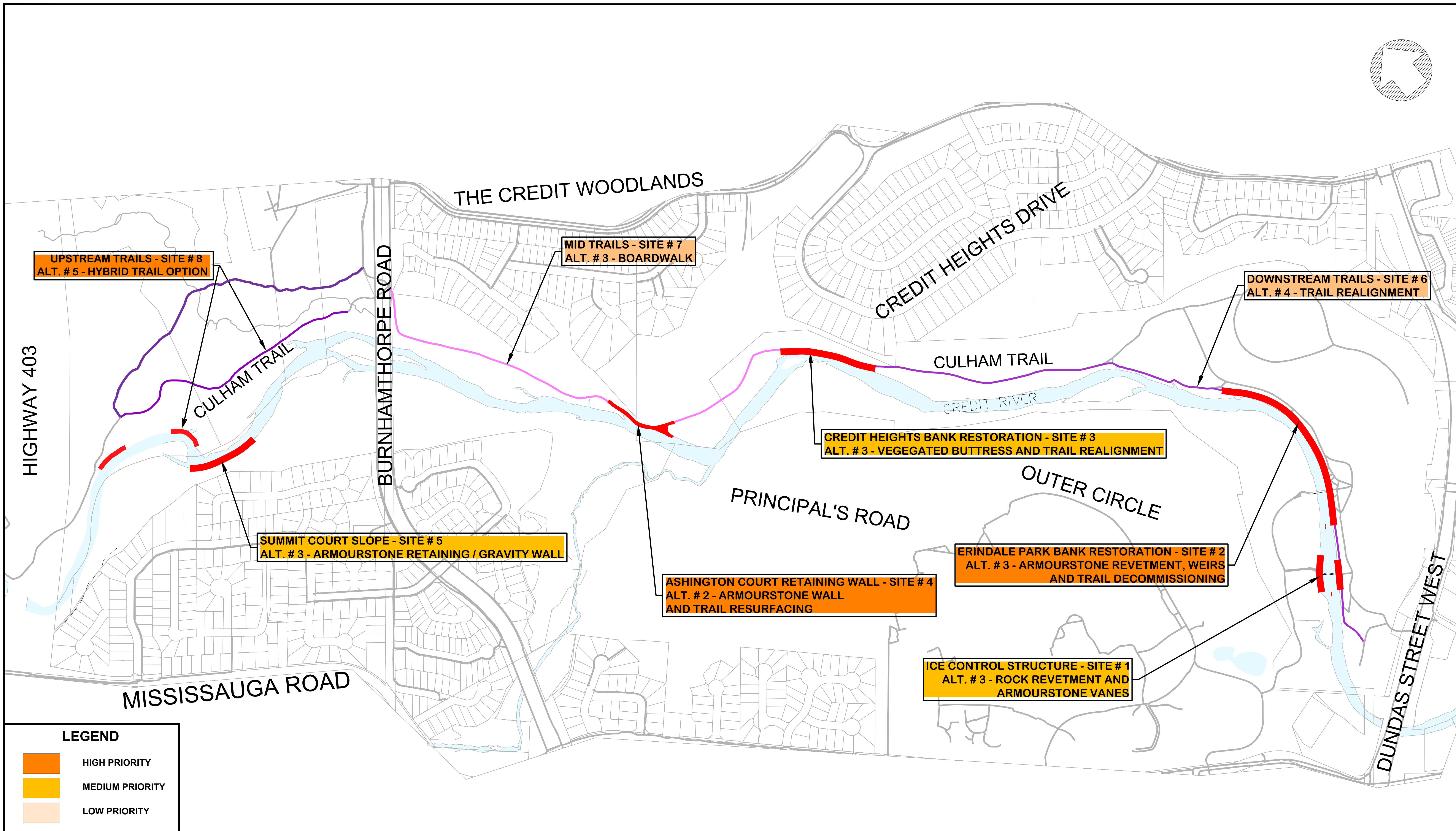
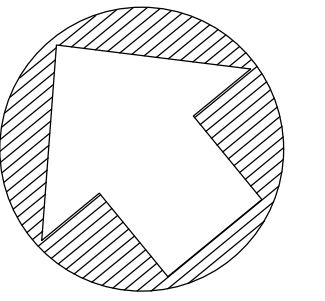


Appendix D – Conceptual Design Drawings for Alternative Solutions



UPSTREAM TRAILS - SITE # 8
ALT. # 5 - HYBRID TRAIL OPTION

MID TRAILS - SITE # 7
ALT. # 3 - BOARDWALK

DOWNSTREAM TRAILS - SITE # 6
ALT. # 4 - TRAIL REALIGNMENT

CREDIT HEIGHTS BANK RESTORATION - SITE # 3
ALT. # 3 - VEGETATED BUTTRESS AND TRAIL REALIGNMENT

SUMMIT COURT SLOPE - SITE # 5
ALT. # 3 - ARMOURSTONE RETAINING / GRAVITY WALL

ASHINGTON COURT RETAINING WALL - SITE # 4
ALT. # 2 - ARMOURSTONE WALL AND TRAIL RESURFACING

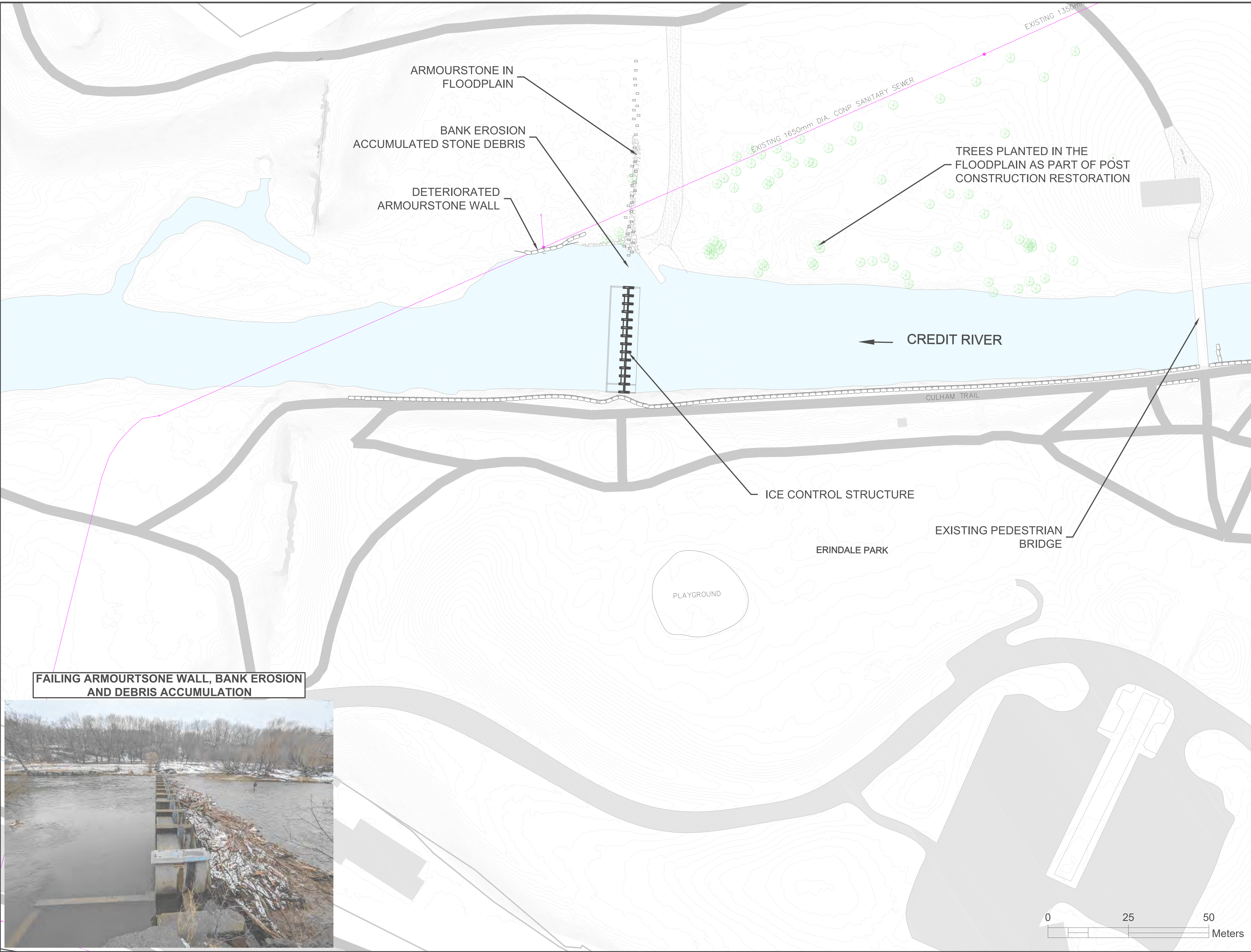
ERINDALE PARK BANK RESTORATION - SITE # 2
ALT. # 3 - ARMOURSTONE REVETMENT, WEIRS AND TRAIL DECOMMISSIONING

ICE CONTROL STRUCTURE - SITE # 1
ALT. # 3 - ROCK REVETMENT AND ARMOURSTONE VANES

LEGEND

- HIGH PRIORITY
- MEDIUM PRIORITY
- LOW PRIORITY

**CREDIT RIVER EROSION CONTROL PROJECT
DUNDAS STREET WEST TO HIGHWAY 403
PROPOSED PROJECT EXTENTS**



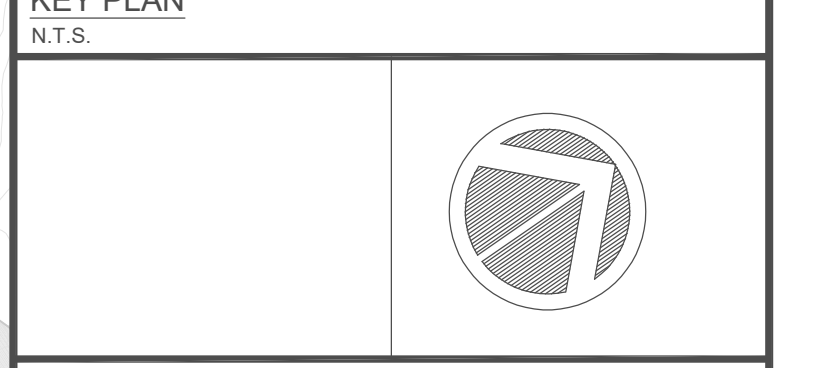
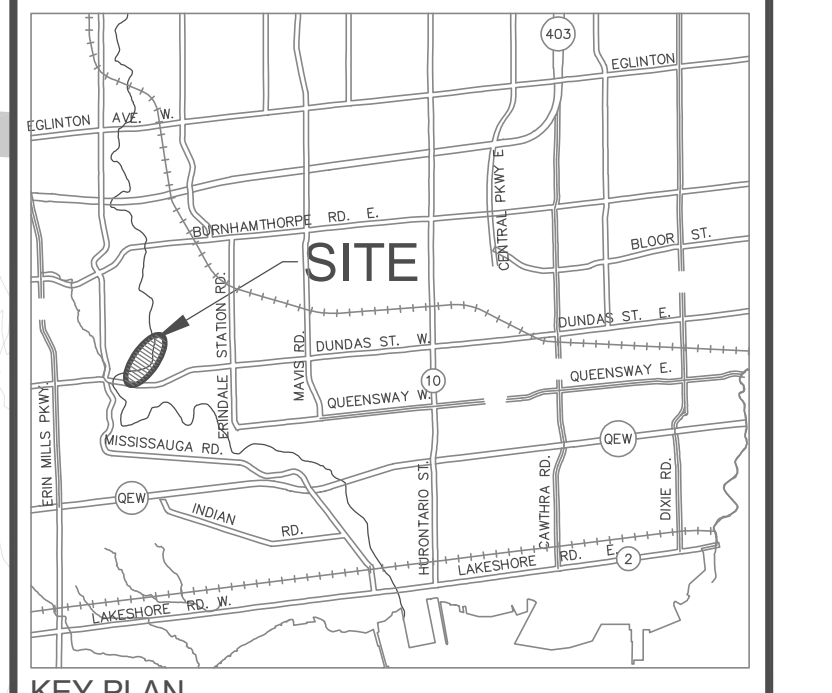
FAILING ARMOURSTONE WALL, BANK EROSION AND DEBRIS ACCUMULATION



2	R.A.	27/02/2023	ISSUED FOR REVIEW	RA
1	R.A.	30/10/2022	ISSUED FOR REVIEW	RA
NO.	BY	DDMMYY	REVISIONS	CHECKED

LEGEND

	PROPERTY/BUILDING LINE
	WATERCOURSE
	TOP OF BANK
	EXISTING CONTOUR
	SANITARY SEWER
	STORM SEWER
	WATERMAIN
	EXISTING TRAIL



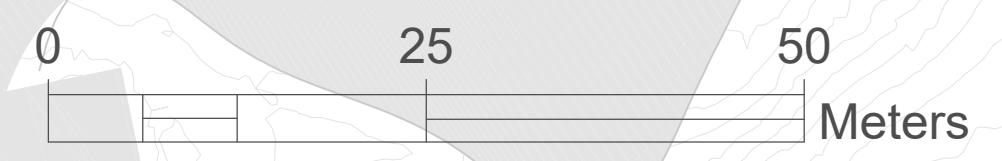
Aquafor Beech Limited
 4-222-2402 (TOLL FREE) 905-874-1111
 MISSISSAUGA, ONTARIO, L4V 1S2
 PHONE: (905) 629-0099 FAX: (905) 629-0099



Project Name: **Credit River Erosion Control From Dundas Street West to Hwy 403**

Drawing Title: **ICE CONTROL STRUCTURE ALTERNATIVE 1 - DO NOTHING**

DRAWN BY:	P.S.	CHECKED BY:	R.A.	PROJECT NO.	XX XXX XXXX
DESIGNED BY:	R.A.	CHECKED BY:		DWG. NO.	GP-1
SCALE:	1:500	DATE:	FEB. 27, 2023	SHEET NO.	1 OF 3



RESTORE / RESET ARMOURSTONE IN FLOODPLAIN TO ORIGINAL GRADE AND ALIGNMENT

AREA OF 200mm- 300mmØ RIP-RAP REGRADING

PROPOSED ARMOURSTONE WALL AT ORIGINAL BANK LOCATION

SANITARY MANHOLE TO BE RAISED / RERHABILITATED

TREES PLANTED IN THE FLOODPLAIN AS PART OF POST CONSTRUCTION RESTORATION TO BE REMOVED

← CREDIT RIVER

ICE CONTROL STRUCTURE TO BE RETAINED / PROTECTED

ERINDALE PARK

PLAYGROUND

REMOVE AND REPLACE WITH NEW ARMOURSTONE RETAINING WALL

DUNDAS STREET WEST

CULHAM TRAIL

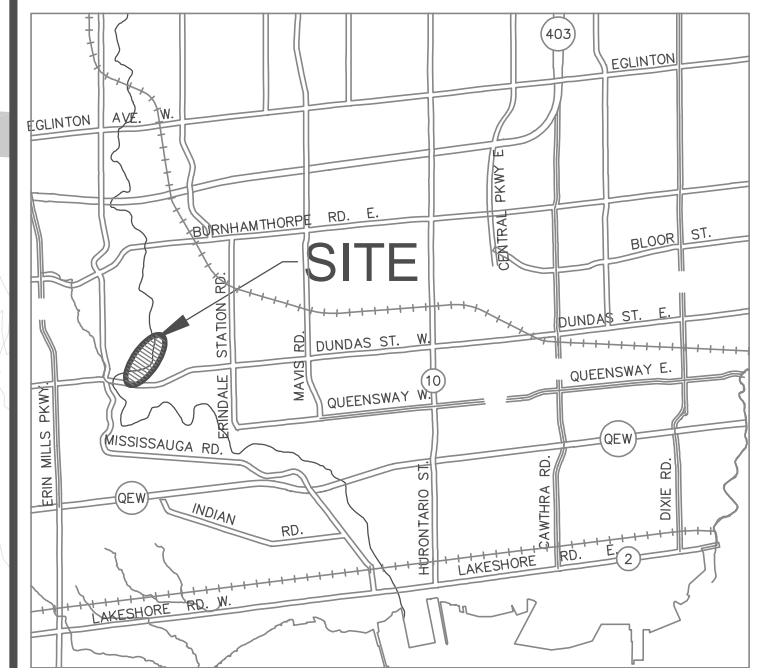
EXISTING 1650mm DIA. CONCP SANITARY SEWER

EXISTING 1350mm

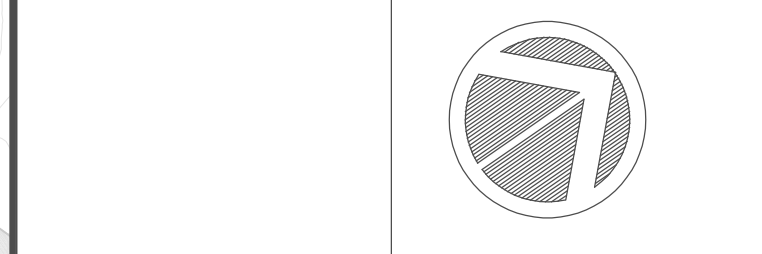
2	R.A.	27/02/2023	ISSUED FOR REVIEW	RA
1	R.A.	30/10/2022	ISSUED FOR REVIEW	RA
NO.	BY	DDMMYY	REVISIONS	CHECKED

LEGEND

	PROPERTY/BUILDING LINE
	WATERCOURSE
	TOP OF BANK
	EXISTING CONTOUR
	SANITARY SEWER
	STORM SEWER
	WATERMAIN



KEY PLAN
N.T.S.



Aquafor Beech
Limited
#4-222-2610 (TOLL FREE) 416-277-1111
MISSISSAUGA, ONTARIO, L4V 1S2
PHONE: (905) 629-0099 FAX: (905) 629-0099

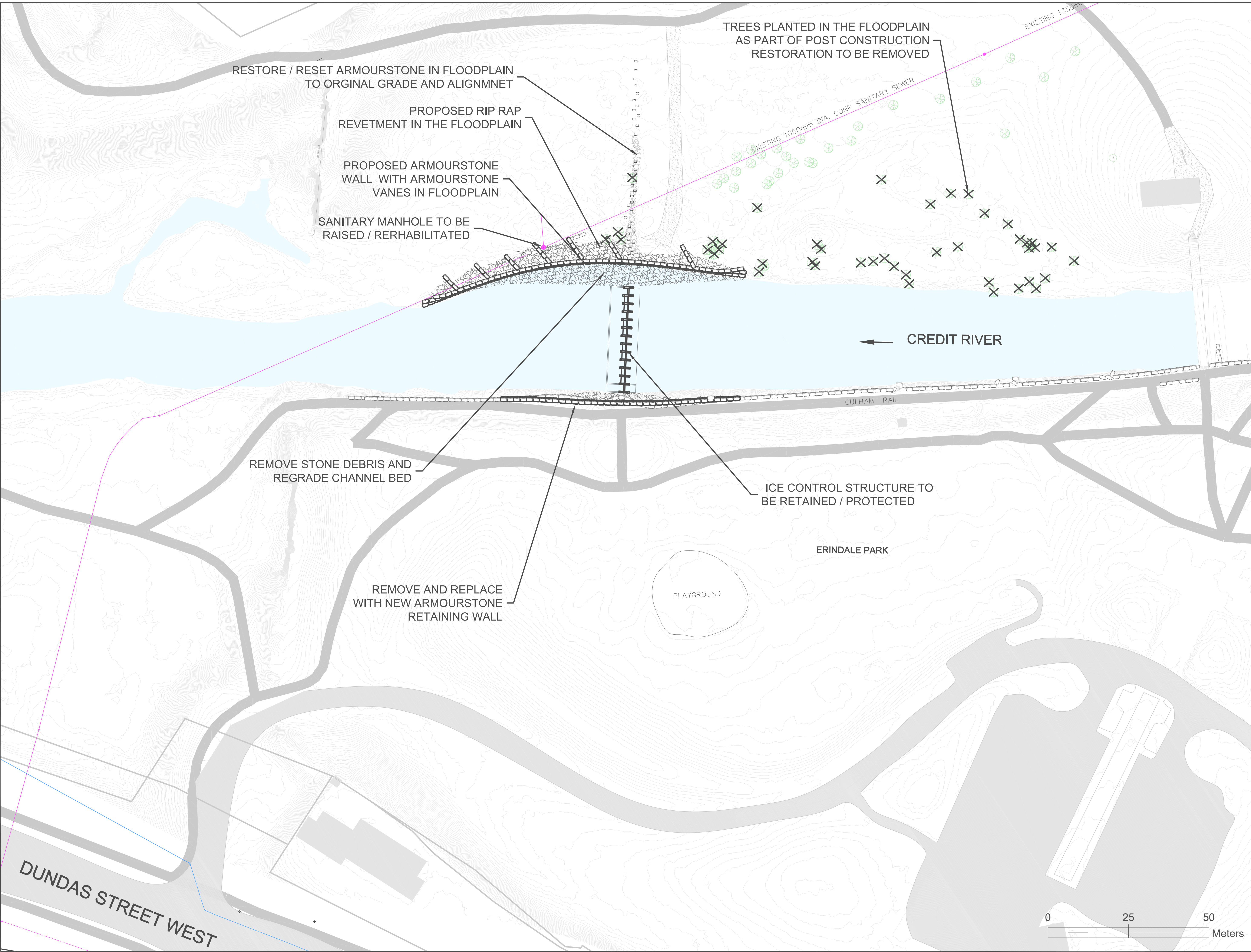
MISSISSAUGA

Project Name:
**Credit River Erosion Control
From Dundas Street West to Hwy 403**

Drawing Title:
**ICE CONTROL STRUCTURE
ALTERNATIVE 2 - RESTORE TO AS-BUILT
CONDITIONS**

DRAWN BY:	P.S.	CHECKED BY:	R.A.	PROJECT NO.	XX XXX XXXX
DESIGNED BY:	R.A.	CHECKED BY:		DWG. NO.	GP-2
SCALE:	1:500	DATE:	FEB. 27, 2023	SHEET NO.	2 OF 3

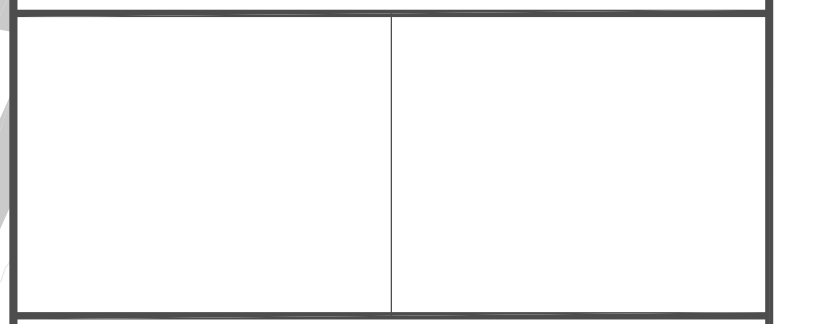
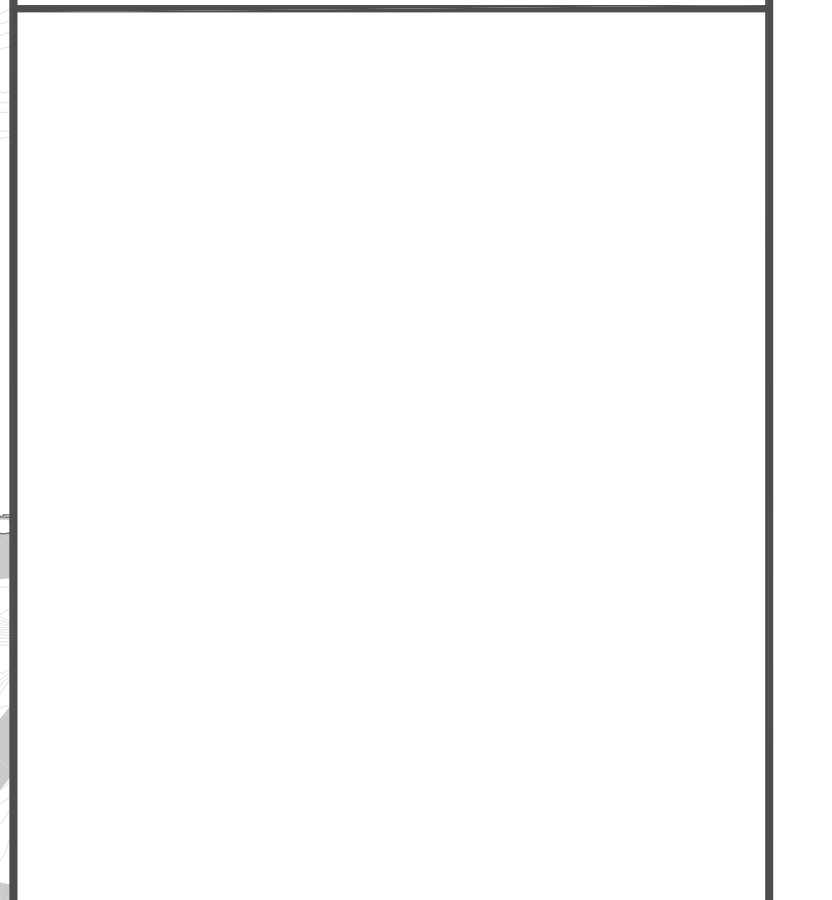




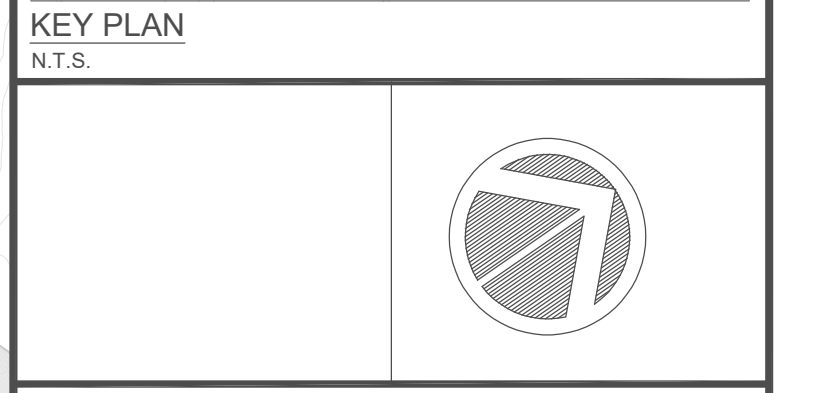
2	R.A.	27/02/2023	ISSUED FOR REVIEW	RA
1	R.A.	30/10/2022	ISSUED FOR REVIEW	RA
NO.	BY	DDMMYY	REVISIONS	CHECKED

LEGEND

	PROPERTY/BUILDING LINE
	WATERCOURSE
	TOP OF BANK
	EXISTING CONTOUR
	SANITARY SEWER
	STORM SEWER
	WATERMAIN
	EXISTING TRAIL



KEY PLAN
N.T.S.



8-222-2662 (TOLL FREE) 905-882-1111
MISSISSAUGA, ONTARIO, L4V 1S2
PHONE: (905) 629-0099 FAX: (905) 629-0099

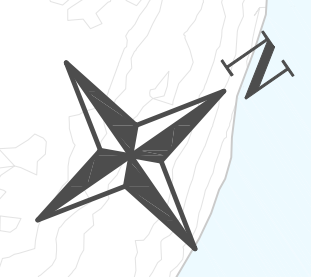


Project Name:
**Credit River Erosion Control
From Dundas Street West to Hwy 403**

Drawing Title:
**ICE CONTROL STRUCTURE
ALTERNATIVE 3 - ROCK REVETMENT
AND ARMOURSTONE VANE**

DRAWN BY:	P.S.	CHECKED BY:	R.A.	PROJECT NO.	XX XXX XXXX
DESIGNED BY:	R.A.	CHECKED BY:		DWG. NO.	GP-3
SCALE:	1:500	DATE:	FEB. 27, 2023	SHEET NO.	3 OF 3

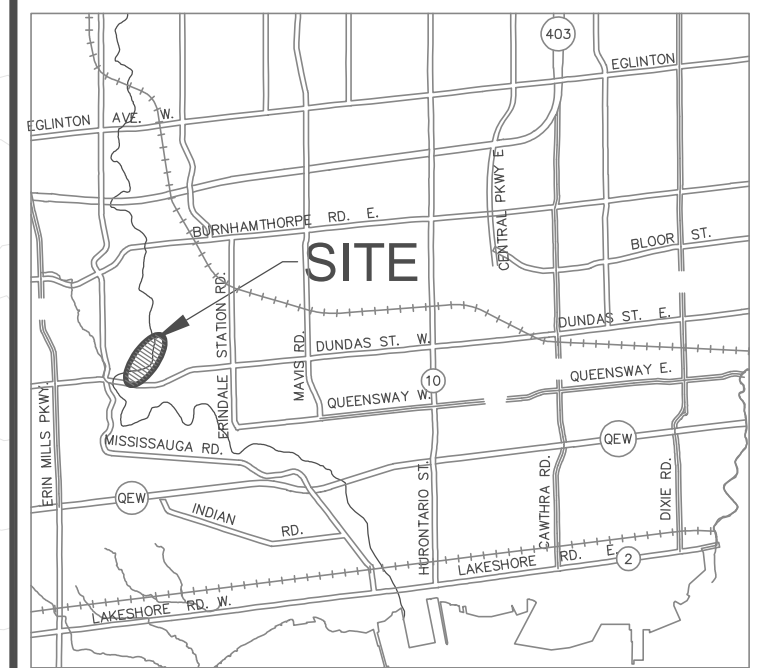




2	R.A.	27/02/2023	ISSUED FOR REVIEW	RA
1	R.A.	30/10/2022	ISSUED FOR REVIEW	RA
NO.	BY	DDMMYY	REVISIONS	CHECKED

LEGEND

	PROPERTY/BUILDING LINE
	WATERCOURSE
	TOP OF BANK
	EXISTING CONTOUR
	SANITARY SEWER
	STORM SEWER
	WATERMAIN
	EXISTING TRAIL



FAILING ARMOURSTONE WALL AND STONE WEIRS



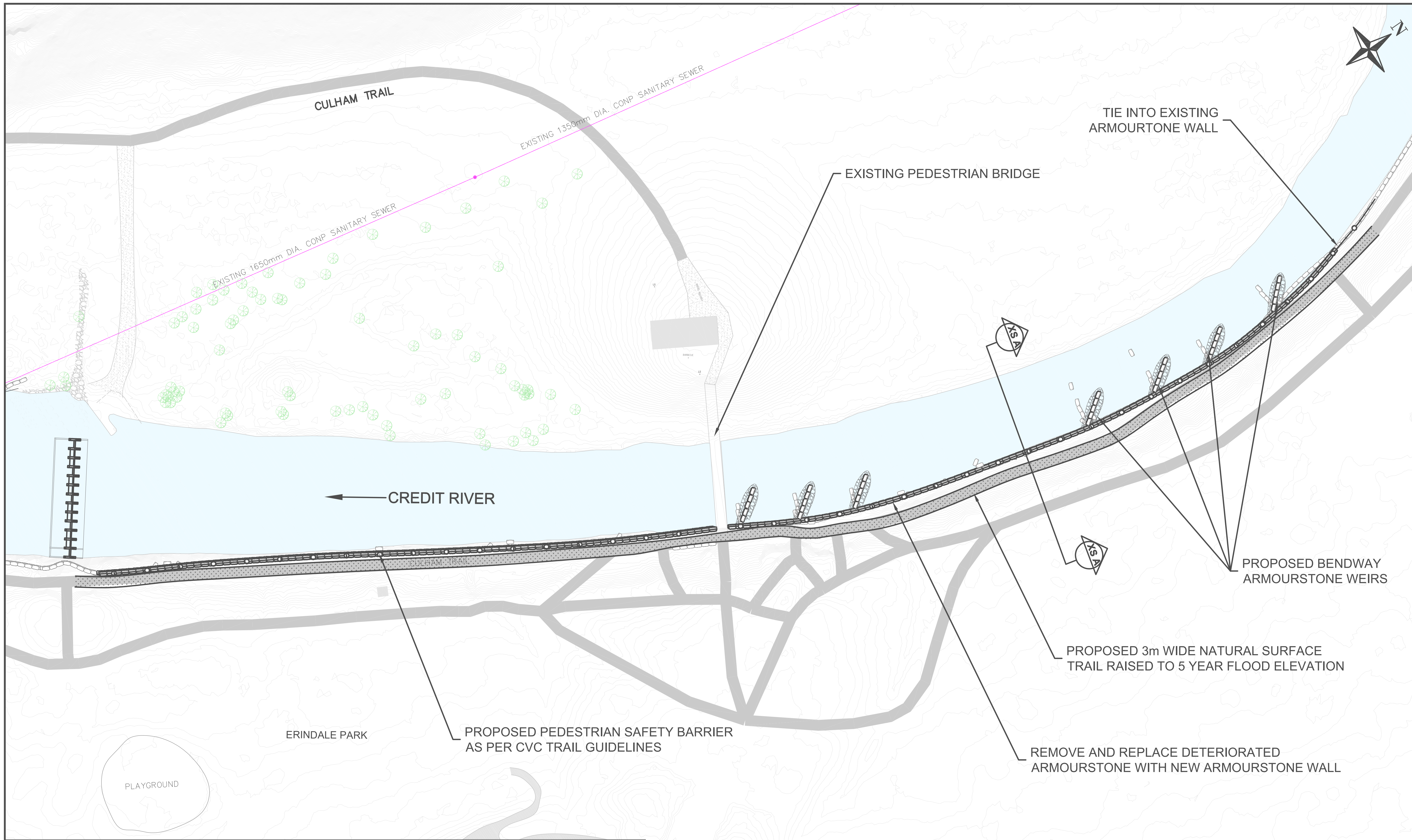
Aquafor Beech Limited
 #100-2600 STEWART AVE.
 MISSISSAUGA, ONTARIO, L4V 1S2
 PHONE: (905) 679-0099 FAX: (905) 679-0099

MISSISSAUGA

Project Name:
**Credit River Erosion Control
 From Dundas Street West to Hwy 403**

Drawing Title:
**ERINDALE PARK BANK RESTORATION
 ALTERNATIVE 1 - DO NOTHING**

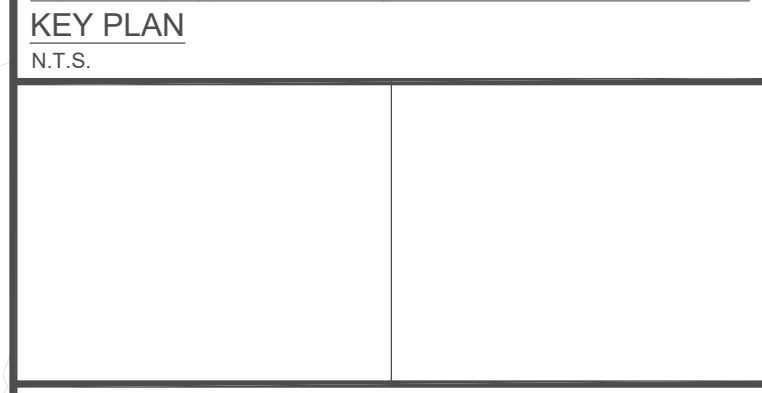
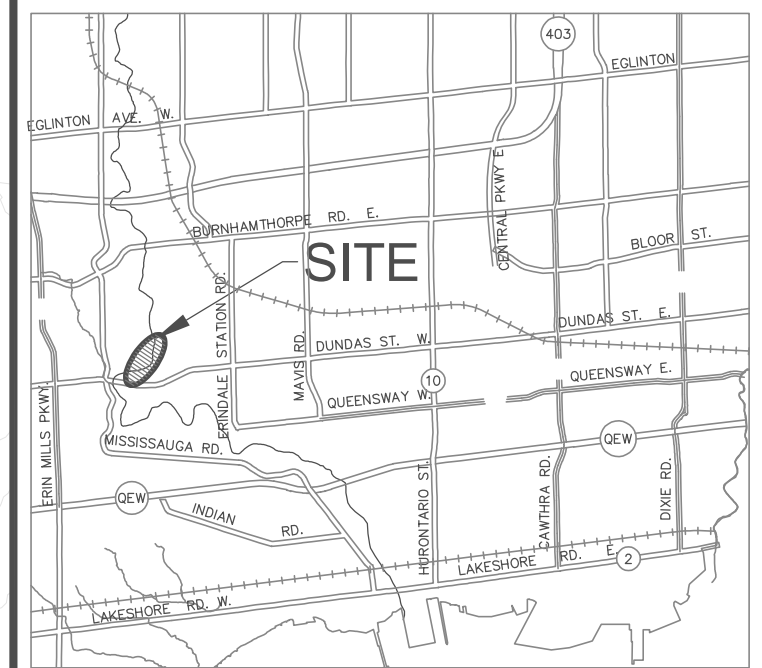
DRAWN BY:	P.S.	CHECKED BY:	R.A.	PROJECT NO.	XX XXX XXXX
DESIGNED BY:	R.A.	CHECKED BY:		DWG. NO.	GP-1
SCALE:	1:500	DATE:	FEB. 27, 2023	SHEET NO.	1 OF 3



2	R.A.	27/02/2023	ISSUED FOR REVIEW	RA
1	R.A.	30/10/2022	ISSUED FOR REVIEW	RA
NO.	BY	DATE	REVISIONS	CHECKED

LEGEND

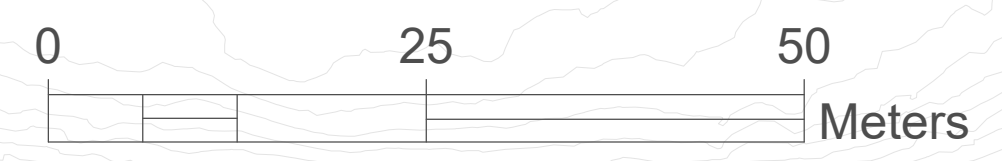
- PROPERTY/BUILDING LINE
- WATERCOURSE
- TOP OF BANK
- EXISTING CONTOUR
- SANITARY SEWER
- STORM SEWER
- WATERMAIN
- EXISTING TRAIL

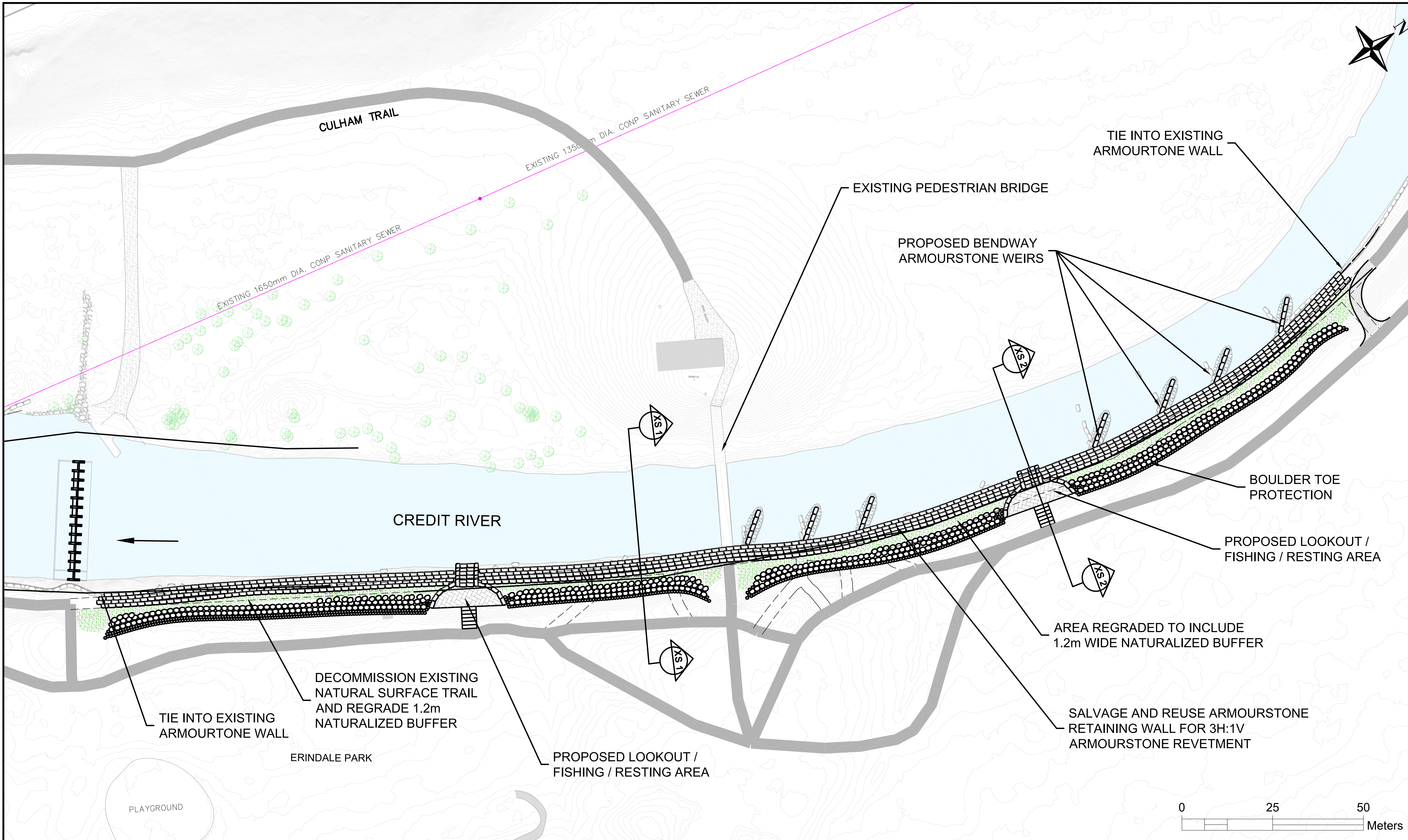


Project Name:
**Credit River Erosion Control
From Dundas Street West to Hwy 403**

Drawing Title:
**ERINDALE PARK BANK RESTORATION
ALTERNATIVE 2 - ARMOURSTONE WALL
AND WEIRS**

DRAWN BY:	P.S.	CHECKED BY:	R.A.	PROJECT NO.	XX XXX XXXX
DESIGNED BY:	R.A.	CHECKED BY:		DWG. NO.	GP-2
SCALE:	1:500	DATE:	FEB. 27, 2023	SHEET NO.	2 OF 3

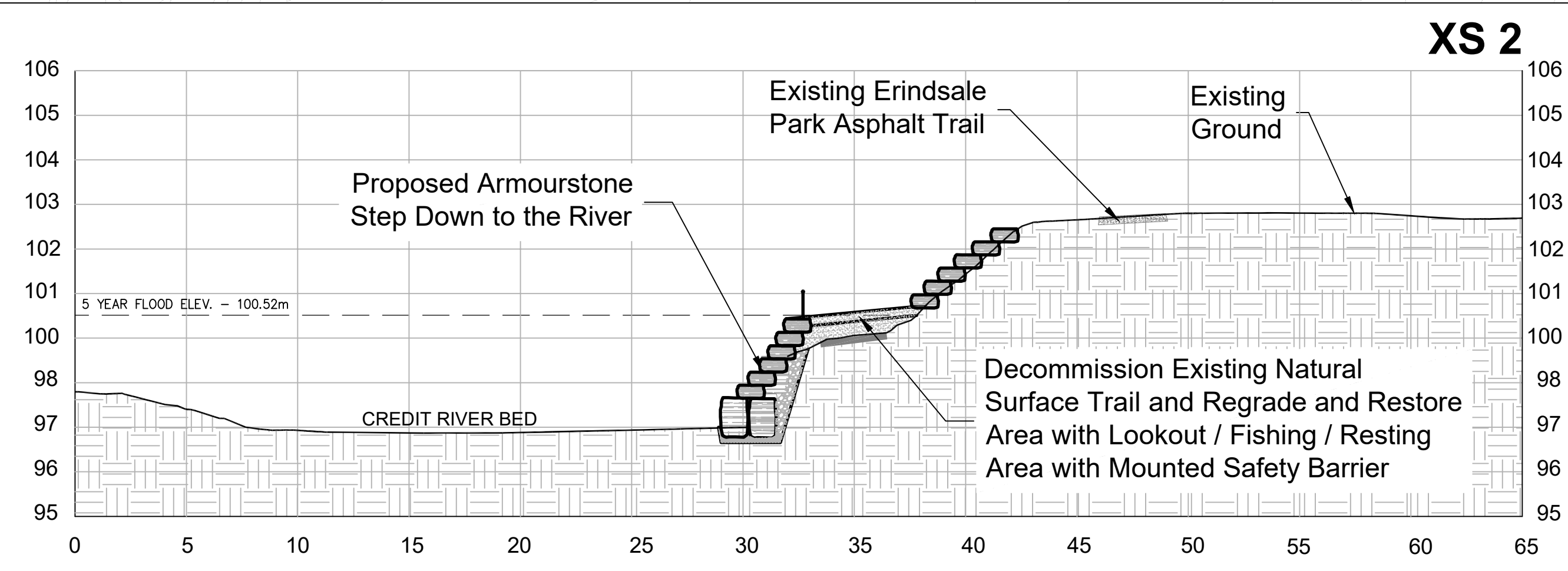
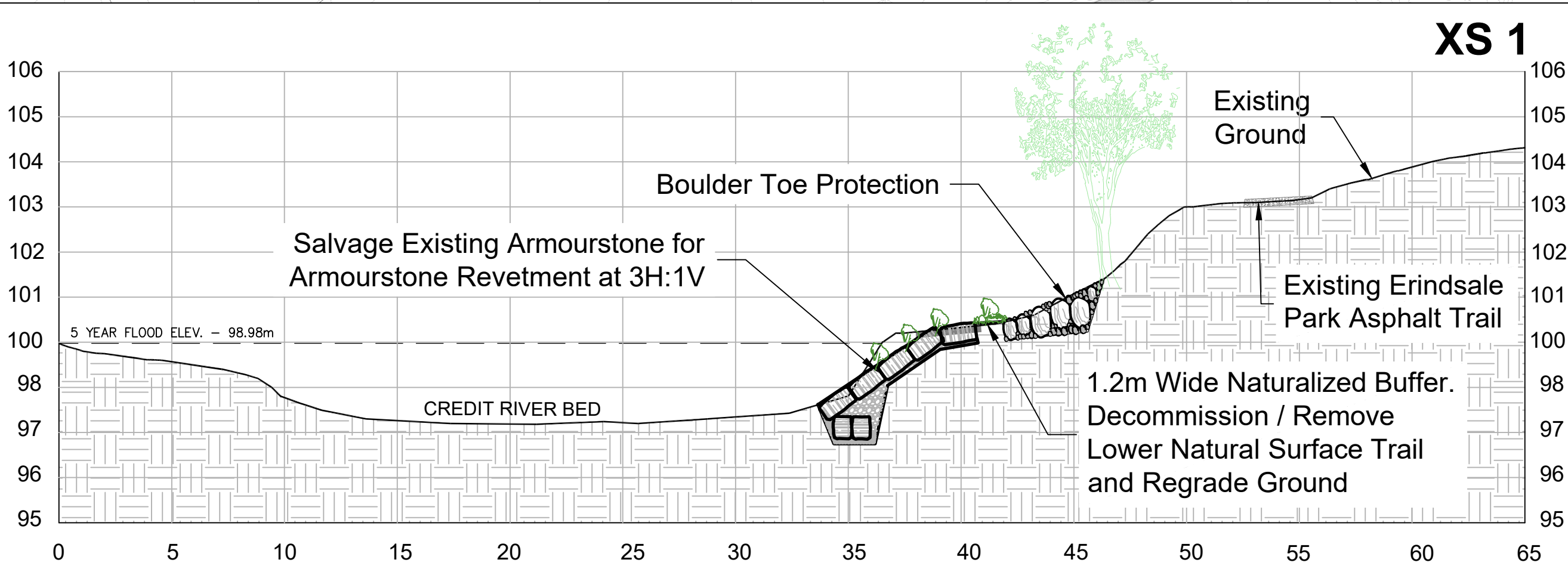
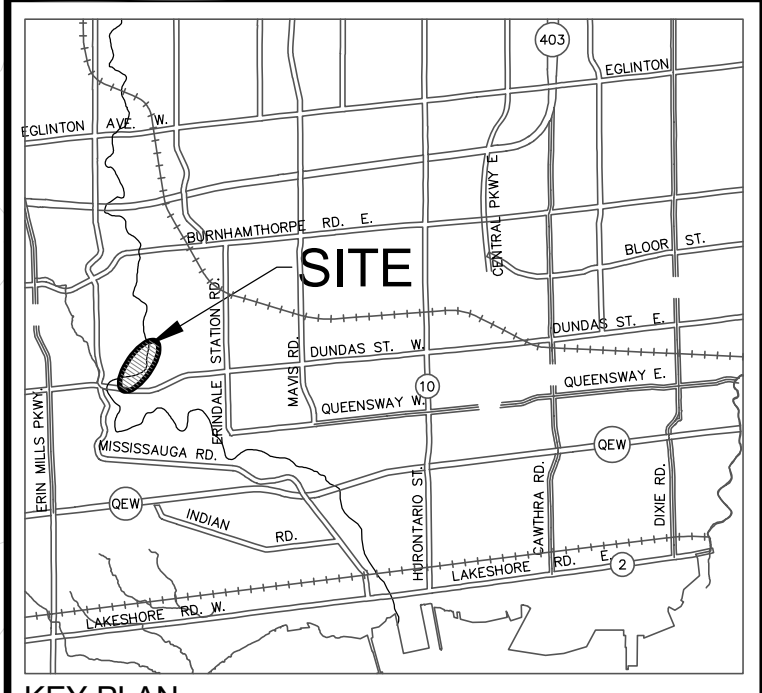




3	R.A.	12/04/2023	ISSUED FOR REVIEW	RA
2	R.A.	27/02/2023	ISSUED FOR REVIEW	RA
1	R.A.	30/10/2022	ISSUED FOR REVIEW	RA
NO	BY	DDMMYY	REVISIONS	CHECKED

LEGEND

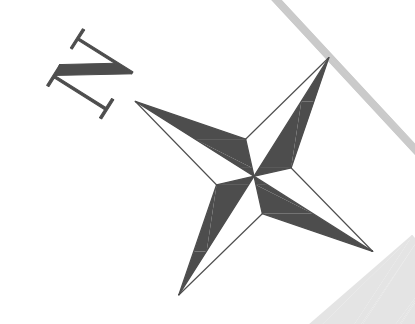
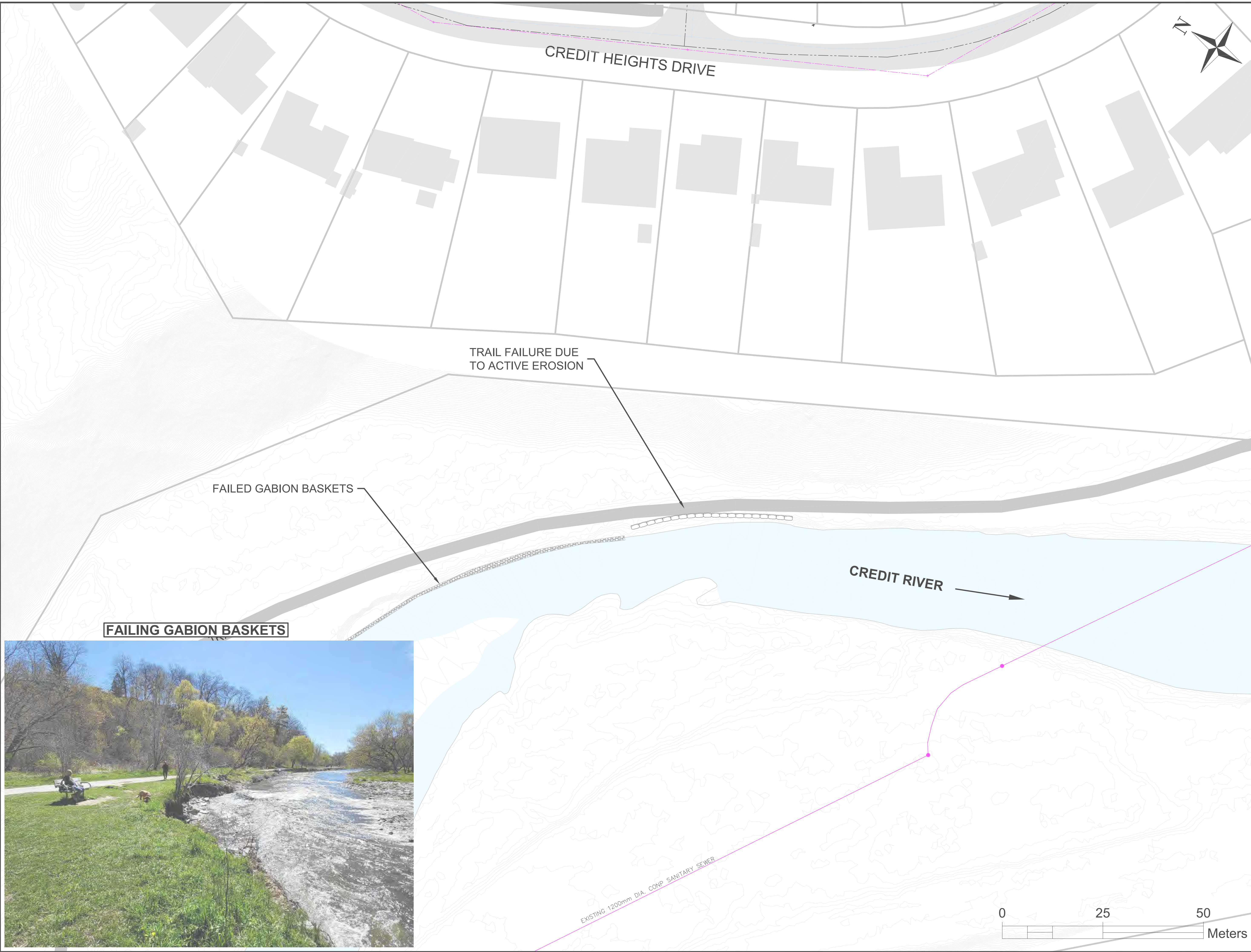
- PROPERTY/ BUILDING LINE
- WATERCOURSE
- TOP OF BANK
- EXISTING CONTOUR
- SANITARY SEWER
- STORM SEWER
- WATERMAIN
- EXISTING TRAIL



Project Name: **Credit River Erosion Control From Dundas Street West to Hwy 403**

Drawing Title: **ERINDALE PARK BANK RESTORATION ALTERNATIVE 3 - ARMOURSTONE WALL, WEIRS AND TRAIL DECOMMISSIONING**

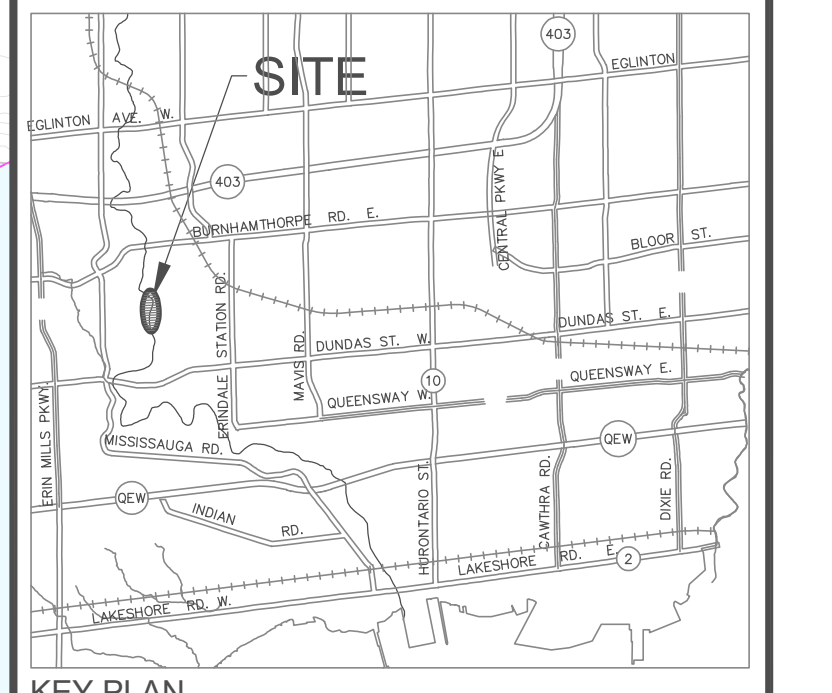
DRAWN BY:	P.S.	CHECKED BY:	R.A.	PROJECT NO. XX.XXXX.XXXX
DESIGNED BY:	R.A.	CHECKED BY:		DWG. NO. GP-3
SCALE:	1:500	DATE:	APRIL 12, 2023	SHEET NO. 3 OF 3



2	R.A.	27/02/2023	ISSUED FOR REVIEW	RA
1	R.A.	30/10/2022	ISSUED FOR REVIEW	RA
NO.	BY	DDMMYY	REVISIONS	CHECKED

LEGEND

	PROPERTY/BUILDING LINE
	WATERCOURSE
	TOP OF BANK
	EXISTING CONTOUR
	SANITARY SEWER
	STORM SEWER
	WATERMAIN
	EXISTING TRAIL



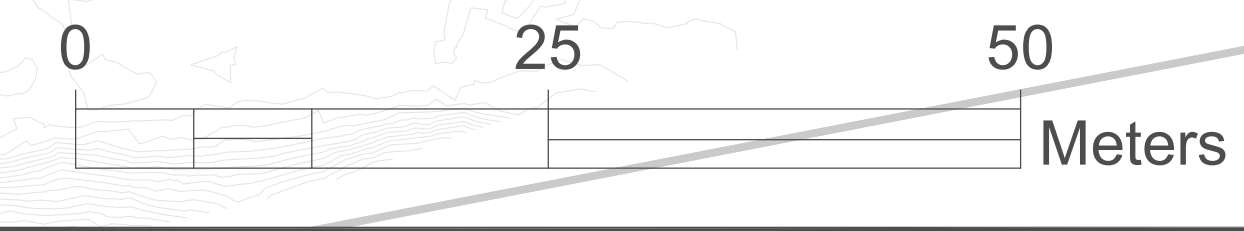
KEY PLAN
N.T.S.



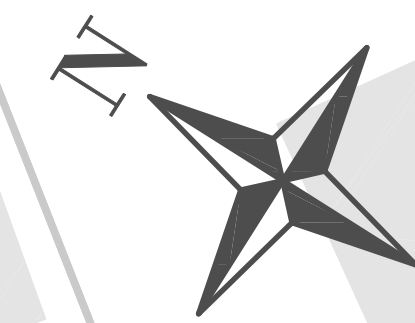
Project Name:
**Credit River Erosion Control
From Dundas Street West to Hwy 403**

Drawing Title:
**CREDIT HEIGHTS BANK RESTORATION
ALTERNATIVE 1 - DO NOTHING**

DRAWN BY:	P.S.	CHECKED BY:	R.A.	PROJECT NO.	XX XXX XXXX
DESIGNED BY:	R.A.	CHECKED BY:		DWG. NO.	GP-1
SCALE:	1:400	DATE:	FEB. 27, 2023	SHEET NO.	1 OF 3



CREDIT HEIGHTS DRIVE



2	R.A.	27/02/2023	ISSUED FOR REVIEW	RA
1	R.A.	30/10/2022	ISSUED FOR REVIEW	RA
NO.	BY	DDMMYY	REVISIONS	CHECKED

LEGEND

	PROPERTY/BUILDING LINE
	WATERCOURSE
	TOP OF BANK
	EXISTING CONTOUR
	SANITARY SEWER
	STORM SEWER
	WATERMAIN
	EXISTING TRAIL

REALIGN TRAIL BEYOND 5 YEAR FLOODPLAIN.
3m WIDE NATURAL SURFACE TRAIL WITH
PEDESTRIAN SAFETY BARRIER

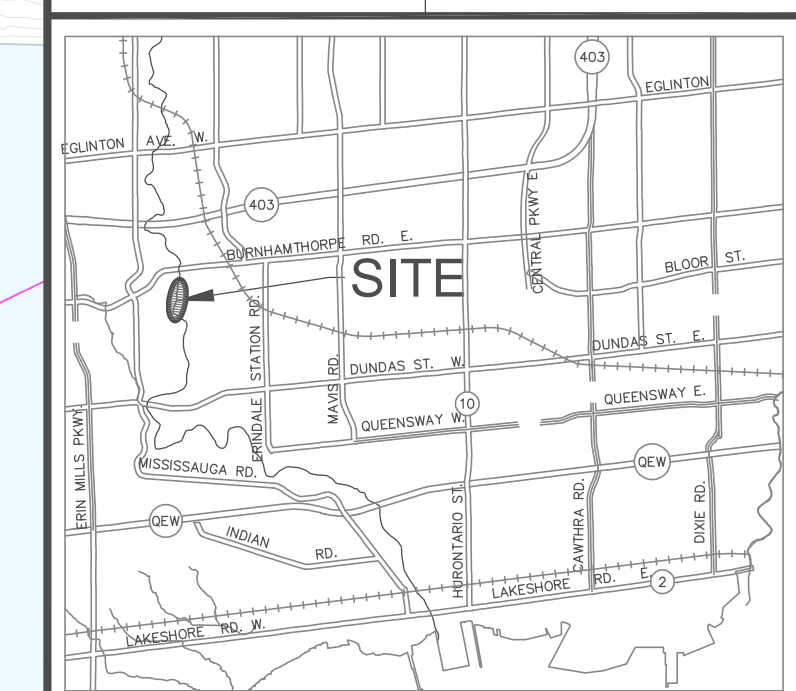
REGRADE AREA

CREDIT RIVER

TIE INTO EXISTING
ARMOURSTONE
RETAINING WALL

REPLACE FAILED GABIONS WITH
ARMOURSTONE
RETAINING WALL

EXISTING 1200mm DIA. COMP SANITARY SEWER



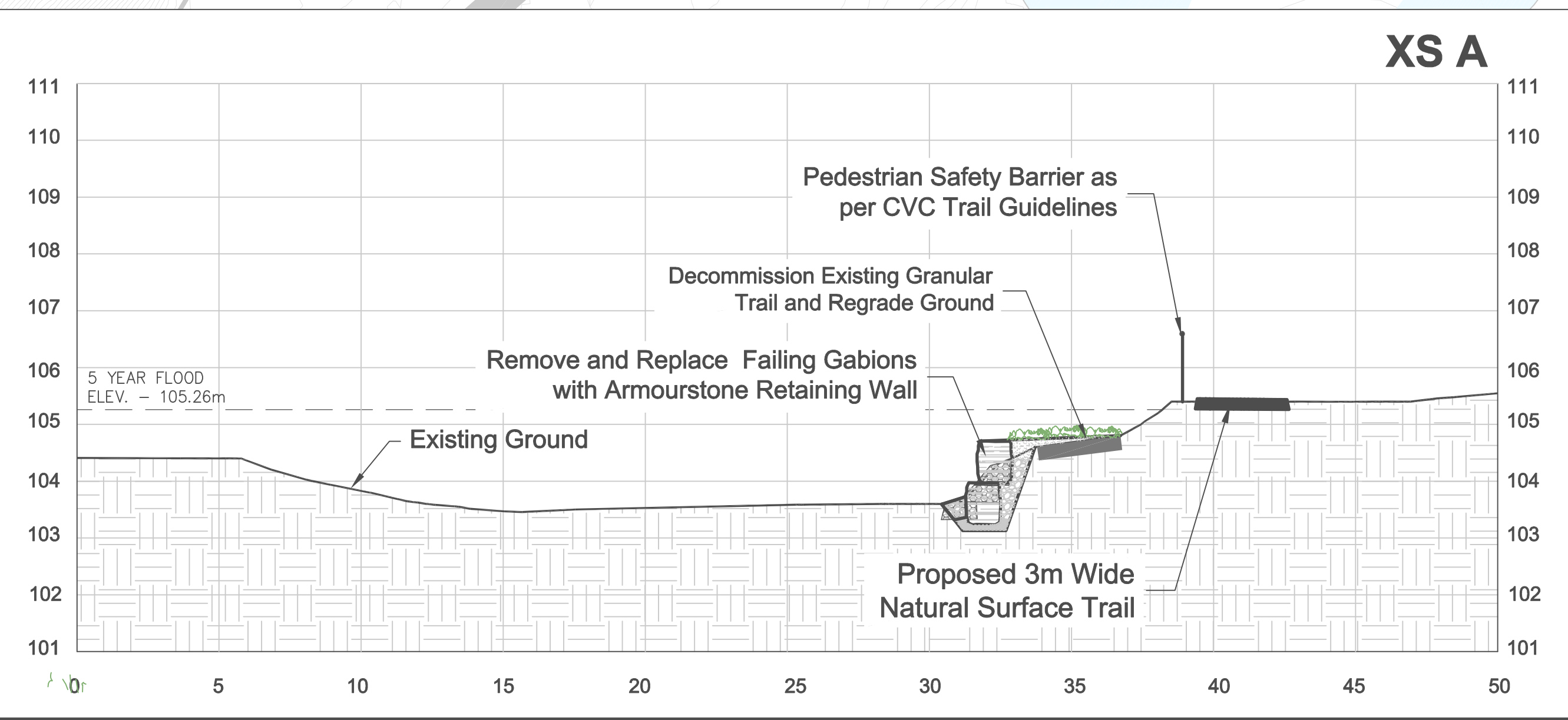
KEY PLAN
N.T.S.

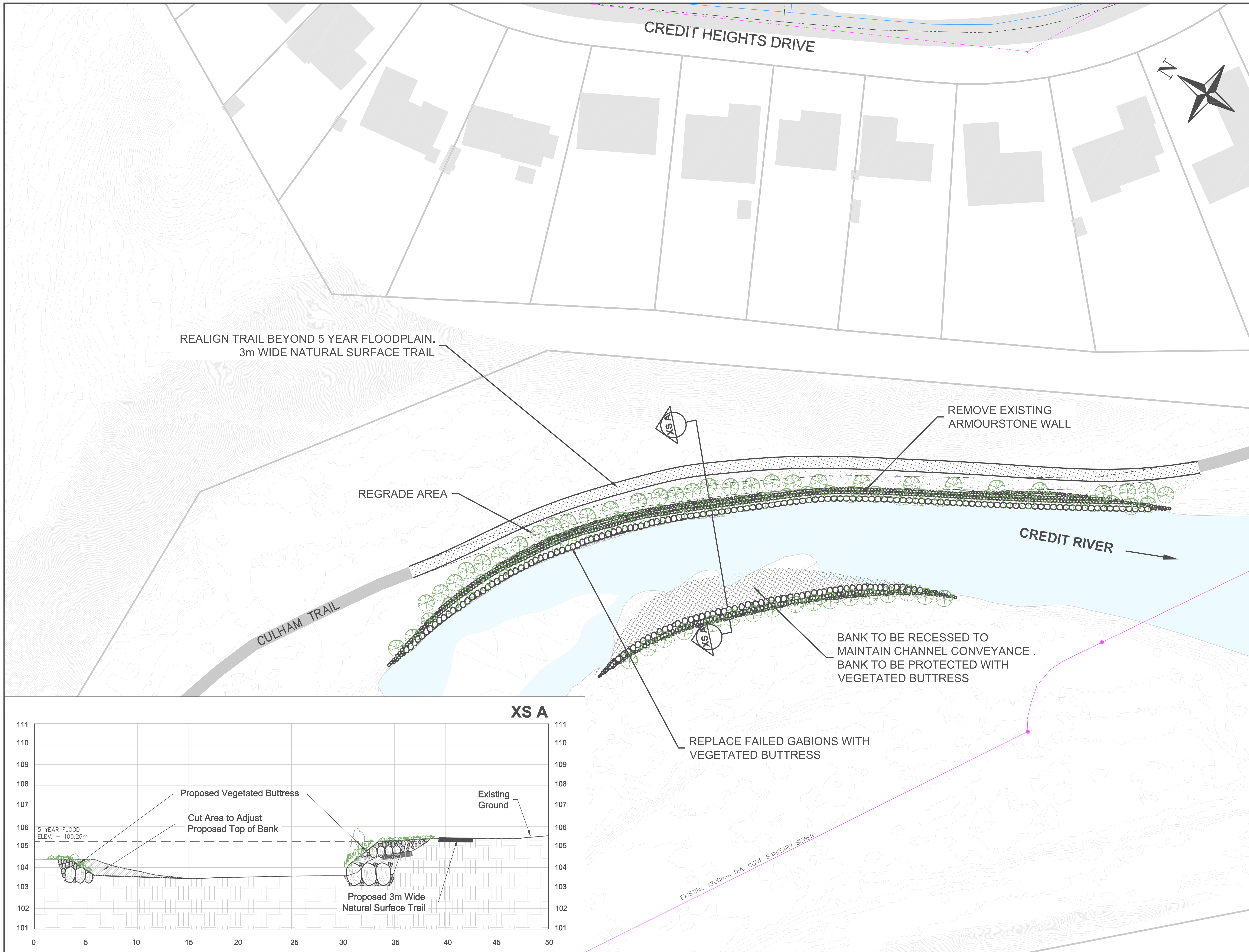


Project Name:
**Credit River Erosion Control
From Dundas Street West to Hwy 403**

Drawing Title:
**CREDIT HEIGHTS BANK RESTORATION
ALTERNATIVE 2 - ARMOURSTONE WALL
AND TRAIL REALIGNMENT**

DRAWN BY:	P.S.	CHECKED BY:	R.A.	PROJECT NO.	XX XXX XXXX
DESIGNED BY:	R.A.	CHECKED BY:		DWG. NO.	GP-2
SCALE:	1:400	DATE:	FEB. 27, 2023	SHEET NO.	2 OF 3

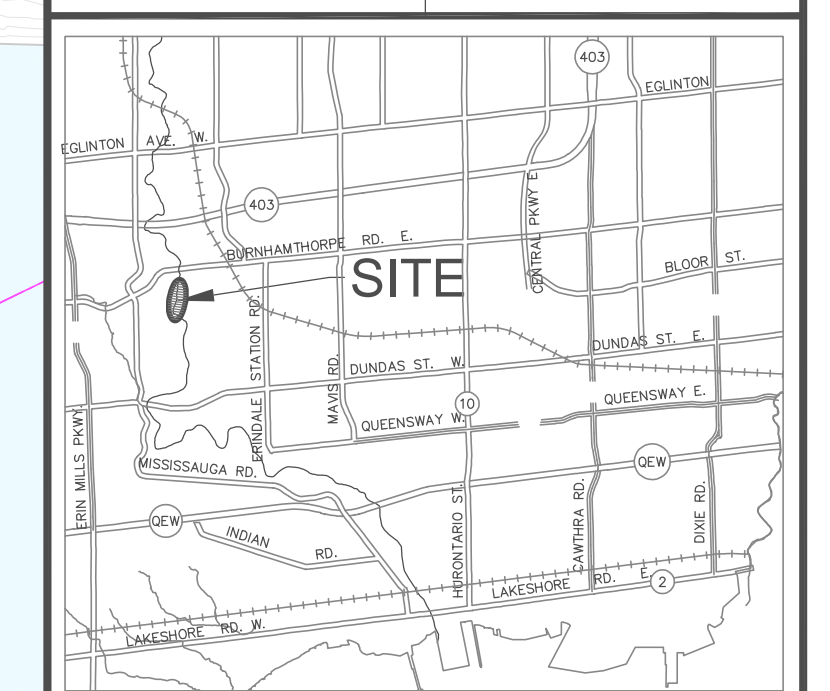




2	R.A.	27/02/2023	ISSUED FOR REVIEW	RA
1	R.A.	30/10/2022	ISSUED FOR REVIEW	RA
NO.	BY	DDMMYY	REVISIONS	CHECKED

LEGEND

- PROPERTY/BUILDING LINE
- WATERCOURSE
- TOP OF BANK
- EXISTING CONTOUR
- SANITARY SEWER
- STORM SEWER
- WATERMAIN
- EXISTING TRAIL



Aquafor Beech Limited

8-22-2400 STEWART AVE.
MISSISSAUGA, ONTARIO, L4V 1S2
PHONE: (905) 629-0099 FAX: (905) 629-0099

MISSISSAUGA

Project Name:
**Credit River Erosion Control
From Dundas Street West to Hwy 403**

Drawing Title:
**CREDIT HEIGHTS BANK RESTORATION
ALTERNATIVE 3 - VEGETATED
BUTTRESS AND TRAIL REALIGNMENT**

DRAWN BY:	P.S.	CHECKED BY:	R.A.	PROJECT NO.	XX XXX XXXX
DESIGNED BY:	R.A.	CHECKED BY:		DWG. NO.	GP-2
SCALE:	1:400	DATE:	FEB. 27, 2023	SHEET NO.	3 OF 3