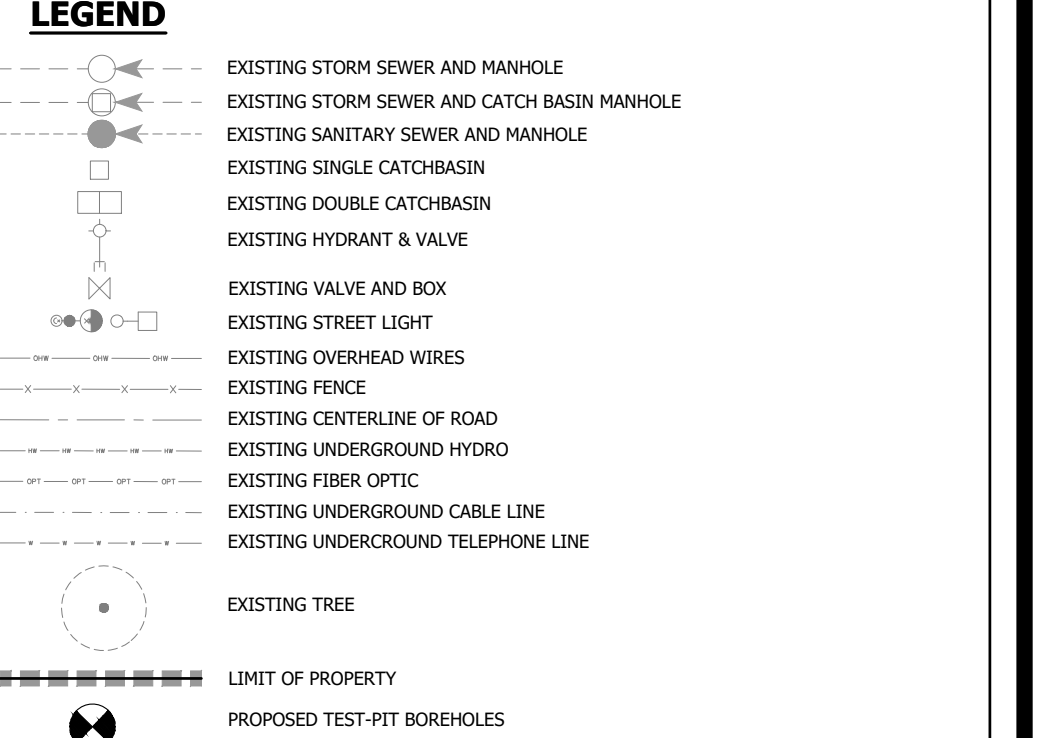
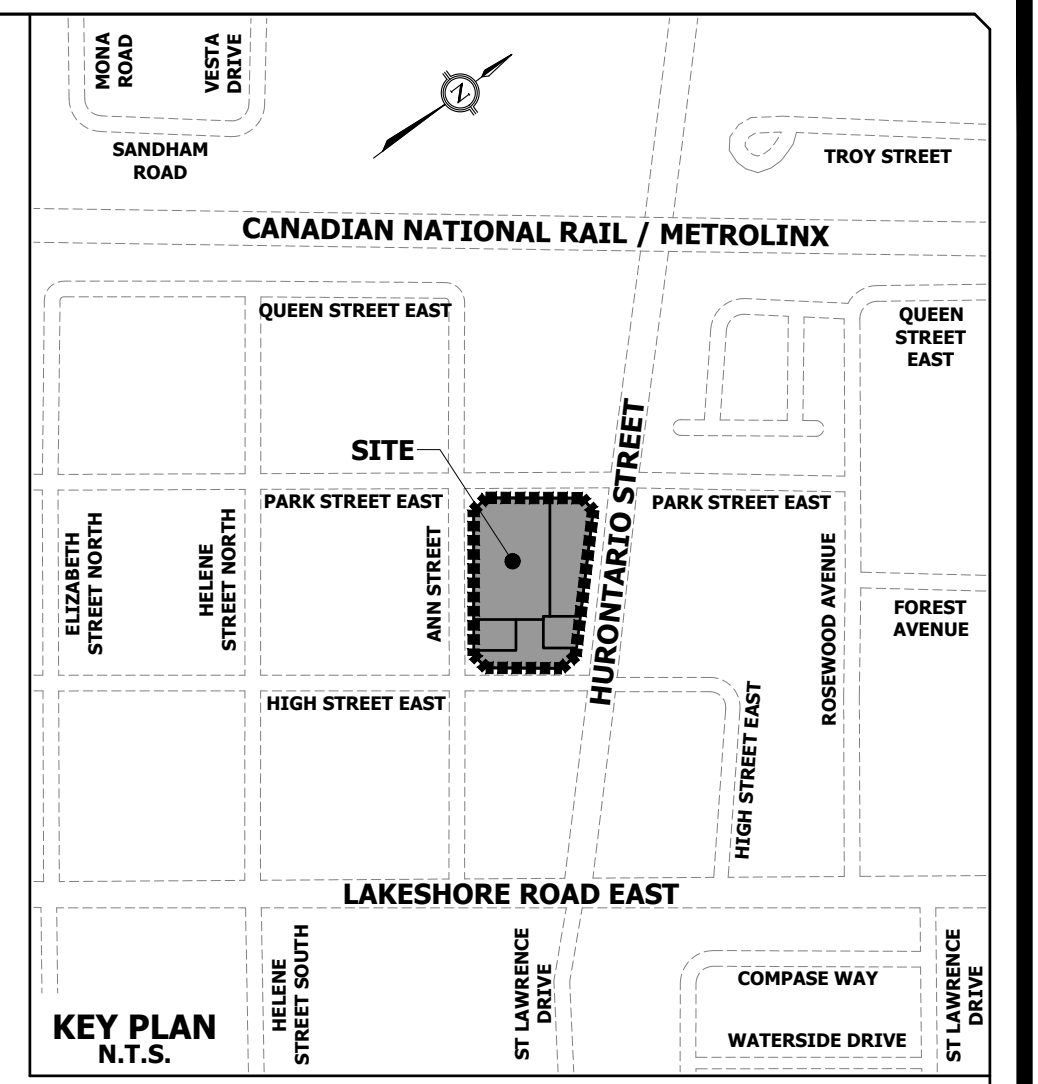
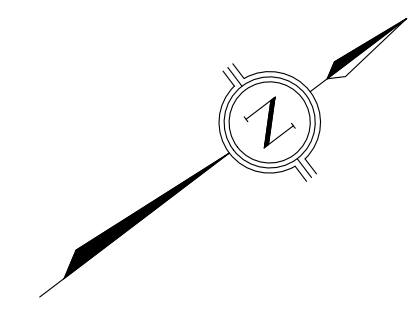
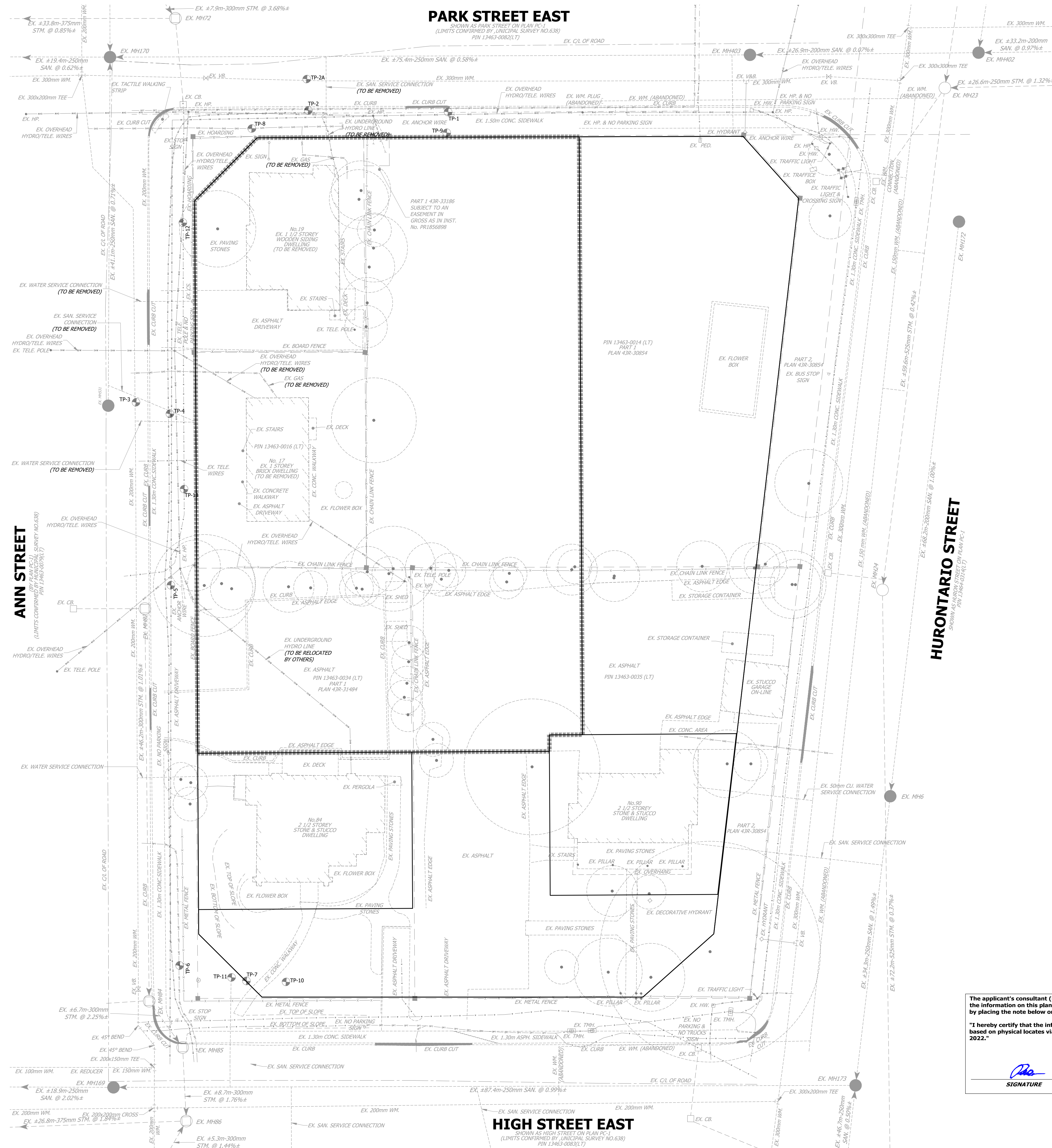


PLOT DATE: June 27, 2024 3:07:12 PM



**ELEVATION NOTE**  
 ELEVATIONS SHOWN ON THIS PLAN ARE RELATED TO GEODETIC DATUM AND ARE DERIVED FROM THE CITY OF MISSISSAUGA BENCHMARKS:  
 No. 72: ELEVATION=76.128m  
 No. 73: ELEVATION=61.38m

**BENCHMARK NOTE**  
 LB#1 SANITARY MANHOLE 0.696m FROM THE CENTER LINE OF THE ROAD AT THE INTERSECTION OF ANN STREET AND HIGH STREET, ELEVATION=86.36m  
 LB#2 SANITARY MANHOLE 1.345m FROM THE CENTER LINE OF THE ROAD AT THE INTERSECTION OF PARK STREET AND HURONTARIO STREET, ELEVATION=82.51m

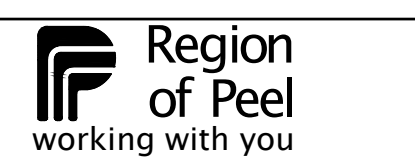
TOPOGRAPHIC SURVEY PREPARED BY J.D. BARNES LIMITED, JANUARY 28, 2020.

ISSUED FOR 3RD RECORDING SUBMISSION DATE: APR. 19, 2023	ISSUED FOR OPA & RECORDING SUBMISSION DATE: AUG. 02, 2023	REVISED GRADING & RECORDING SUBMISSION DATE: JAN. 19, 2024	4TH ROUND OPA & RECORDING SUBMISSION DATE: JUN. 19, 2024
--	--	---	---



**Urbantech Consulting**  
 A Division of Leighton-Zec West Ltd.  
 2030 Bristol Circle, Suite 105  
 Oakville, ON, L6H 0H2  
 TEL: 905.829.8818 • urbantech.com

**10 WEST GO GP INC.**  
 17 & 19 ANN STREET, 84 & 90 HIGH STREET  
 OZ OPA 22-3



**EXISTING COMPOSITE UTILITY PLAN**

REGION FILE NO. XXX	CITY FILE NO. XXX
SCALE: 1:250	AREA: Z-08-C5/D
DRAWN BY: A.G.	CHECKED BY: R.M./R.B.T.M
DATE: APRIL 2023	SHEET: 00
	PROJECT No. 19-241
	PLAN No. <b>901</b>
	C- C-

The applicant's consultant (Professional Engineer) is to certify on the plan that the information on this plan is complete, accurate and based on physical locates by placing the note below on the Utility Plan:

"I hereby certify that the information on this plan is complete, accurate and based on physical locates via test pits, as provided by Onsite, on September 15, 2022."

*[Signature]* JUN. 19, 2024  
 SIGNATURE DATE

**HIGH STREET EAST**  
 SHOWN AS HIGH STREET ON PLAN P.C.1  
 (LIMITS CONFIRMED BY UNICAL SURVEY NO.638)  
 PIN 13463-0083(LT)

**HURONTARIO STREET**  
 SHOWN AS HURONTARIO STREET ON PLAN P.C.1  
 (LIMITS CONFIRMED BY UNICAL SURVEY NO.638)  
 PIN 13463-0082(LT)

**PARK STREET EAST**  
 SHOWN AS PARK STREET ON PLAN P.C.1  
 (LIMITS CONFIRMED BY UNICAL SURVEY NO.638)  
 PIN 13463-0082(LT)