

EROSION AND SEDIMENT CONTROL

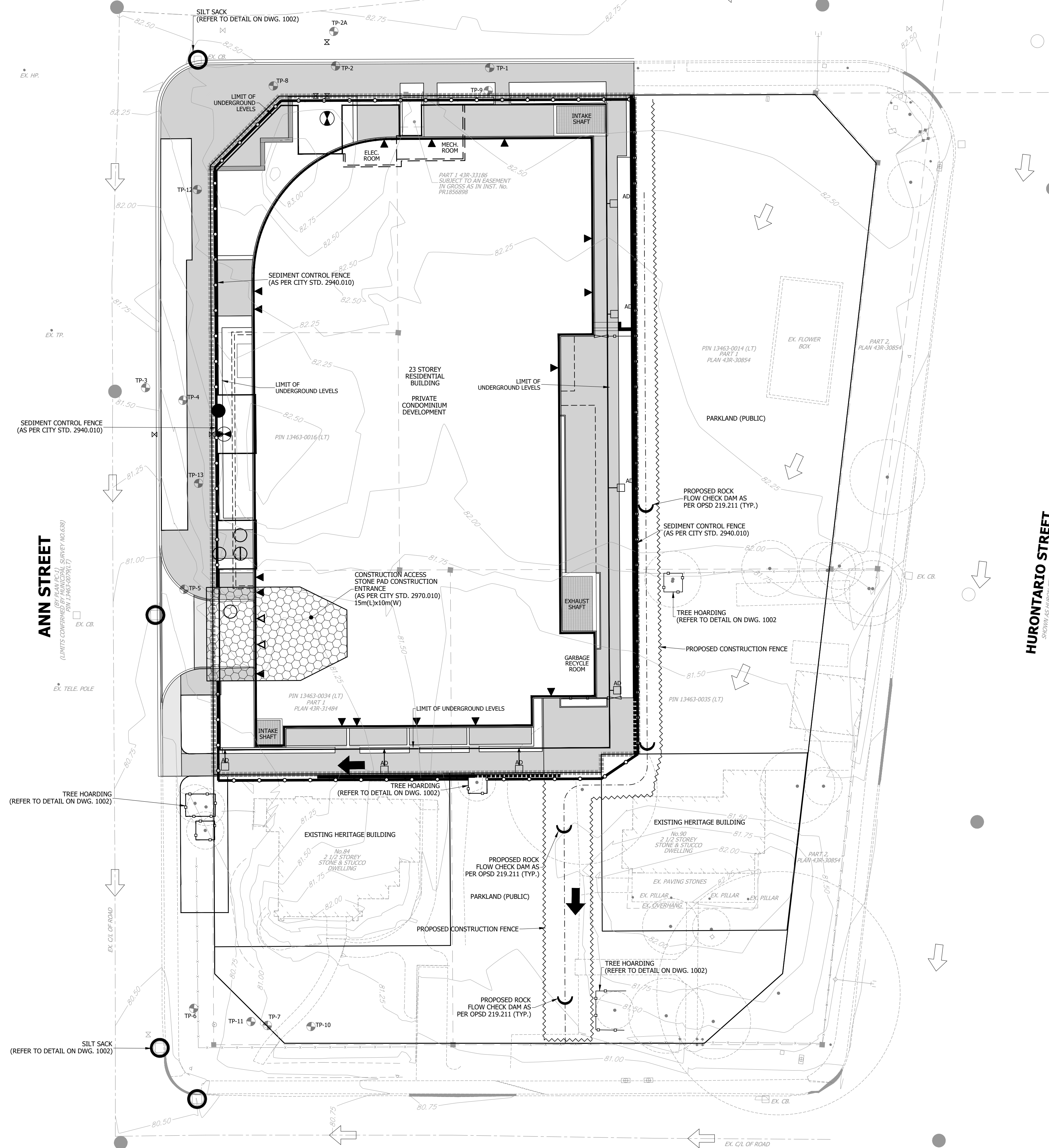
- 1.1. CONTRACTOR TO INSTALL EROSION CONTROL MEASURES AS SHOWN PRIOR TO CONSTRUCTION AND MAINTAIN IN GOOD CONDITION UNTIL CONSTRUCTION IS COMPLETED AND ALL DISTURBED GROUND SURFACES HAVE BEEN RESTABILIZED EITHER BY PAVING OR RESTORATION OF VEGETATIVE COVER.
- 1.2. ALL SILT FENCING TO BE INSTALLED PRIOR TO ANY AREA GRADING, EXCAVATING OR DEMOLITION COMMENCING.
- 1.3. EROSION CONTROL FENCING TO BE INSTALLED AROUND BASE OF ALL LONG TERM STOCKPILES. ALL STOCKPILES TO BE KEPT 2.5M MINIMUM FROM PROPERTY LINE.
- 1.4. EROSION PROTECTION TO BE PROVIDED AROUND ALL STORM CBS.
- 1.5. ADDITIONAL EROSION CONTROL MEASURES MAY BE REQUIRED AS SITE DEVELOPMENT PROGRESSES. CONTRACTOR TO PROVIDE ALL ADDITIONAL EROSION CONTROL STRUCTURES.
- 1.6. EROSION CONTROL STRUCTURES TO REMAIN IN PLACE UNTIL ALL DISTURBED GROUND SURFACES HAVE BEEN RESTABILIZED.
- 1.7. NO ALTERNATE METHODS OF EROSION PROTECTION SHALL BE PERMITTED UNLESS APPROVED BY THE ENGINEER AND THE CITY.
- 1.8. CONTRACTOR TO CLEAN ROADWAY AND SIDEWALKS OF SEDIMENTS RESULTING FROM CONSTRUCTION TRAFFIC FROM THE SITE EACH DAY.
- 1.9. CONTRACTOR MUST REMOVE EROSION AND SEDIMENTATION FENCING PRIOR TO COMPLETION OF PROJECT. CONTRACTOR TO HAVE EROSION AND SEDIMENTATION FENCE INSPECTED WHEN VEGETATION HAS ESTABLISHED, BUT PRIOR TO FENCE BECOMING OVERGROWN. ENGINEER'S REPRESENTATIVE TO DETERMINE IF VEGETATION HAS REACHED THE CRITICAL POINT AND WILL THEN INSTRUCT CONTRACTOR TO REMOVE FENCE.
- 1.10. THE CONTRACTOR SHALL ALSO BE RESPONSIBLE TO CONTROL DUST IN THE PROJECT AND SHALL PROVIDE, AT HIS OWN EXPENSE, CONTROLLING MEASURES AS DIRECTED BY THE ENGINEER AND THE CITY.
- 1.11. SHOULD EXCESSIVE MUD TRACKING BE NOTED ON THE CITY/REGION ROADS, IT MAY BE DIRECTED BY THE CITY/REGION ENGINEER TO INSTALL A WHEEL WASHING DEVICE WHICH WILL BE THE RESPONSIBILITY OF THE CONTRACTOR.
- 1.12. ALL SEDIMENT CONTROLS MUST BE MONITORED ON A WEEKLY BASIS BY THE THIRD PARTY AND A REPORT WILL BE SUBMITTED TO CVC, MNR AND THE CITY OF MISSISSAUGA. DURING OR IMMEDIATELY AFTER A SIGNIFICANT RAINFALL EVENT AN INSPECTION MUST BE DONE, AND THE RECEIVING SYSTEM SHOULD BE INSPECTED FOR EXCESS SEDIMENT LOAD. IF EXCESS SEDIMENT LOAD IS NOTED, THE SEDIMENT EROSION CONTROL PLAN SHOULD BE ADJUSTED TO CONTROL EXCESS SEDIMENT TO THE EXTENT FEASIBLE AS SOON AS POSSIBLE. MODIFICATIONS & MAINTENANCE MAY BE REQUIRED AS SITE CONDITIONS WARRANT. THE CVC AND CITY OF MISSISSAUGA APPROVAL IS REQUIRED PRIOR TO MODIFICATIONS.
- 1.13. ALL EXTERNAL AREAS DISTURBED DUE TO CONSTRUCTION SHALL BE RESTORED TO THEIR ORIGINAL CONDITION OR BETTER TO THE SATISFACTION OF THE CITY OF MISSISSAUGA OR REGION OF PEEL.

MAINTENANCE RECOMMENDATIONS

- 2.1. REMOVE SEDIMENT AND CONTAMINANTS ANNUALLY AND REINSTATE STORM WATER MANAGEMENT FACILITY ACCORDING TO THE DESIGN OUTLINED ON THIS PLAN.
- 2.2. EROSION CONTROL STRUCTURES TO BE MONITORED REGULARLY AND ANY DAMAGE REPAIRED IMMEDIATELY. SEDIMENTS TO BE REMOVED WHEN ACCUMULATIONS REACH A MAXIMUM OF 1/3 THE HEIGHT OF THE FENCE.
- 2.3. OWNER'S REPRESENTATIVE TO MONITOR EROSION CONTROL STRUCTURES TO ENSURE FENCING IS INSTALLED AND MAINTENANCE IS PERFORMED TO CITY REQUIREMENTS.

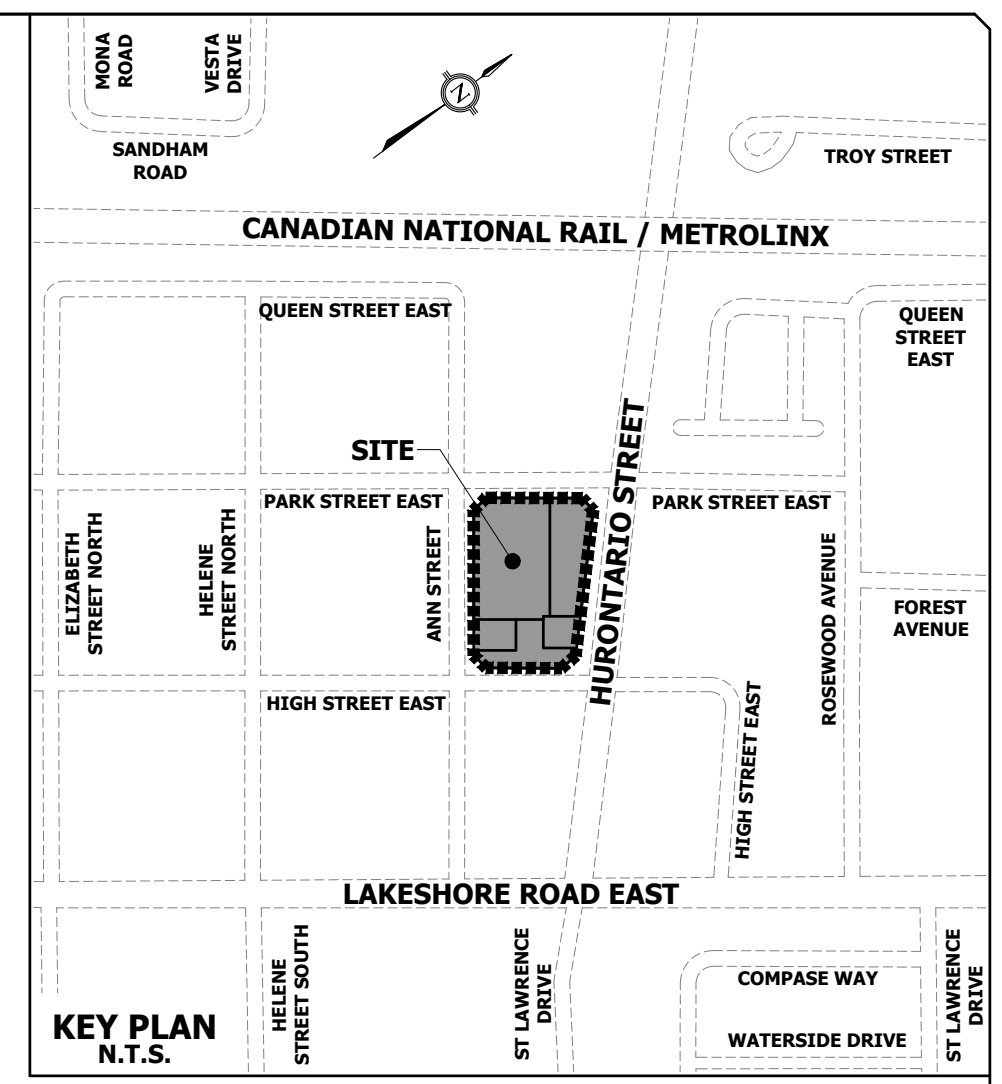
PARK STREET EAST

(LIMITS CONFIRMED BY UNINCIPAL SURVEY NO.638)
PIN 13463-0082(LT)



HIGH STREET EAST

(LIMITS CONFIRMED BY UNINCIPAL SURVEY NO.638)
PIN 13463-0083(LT)



LEGEND

- STORM MANHOLE
- SANITARY MANHOLE
- EXISTING STORM MANHOLE
- EXISTING STORM CATCH BASIN MANHOLE
- EXISTING SANITARY MANHOLE
- SINGLE CATCHBASIN
- EXISTING SINGLE CATCHBASIN
- HYDRANT & VALVE C/W BOLLARDS
- VALVE AND BOX
- DETECTOR CHECK VALVE IN CHAMBER (AS PER R.S.D. 1-3-1)
- EXISTING HYDRANT & VALVE
- EXISTING VALVE AND BOX
- EXISTING CONTOUR AND ELEVATION
- EXISTING OVERLAND FLOW DIRECTION
- EXISTING CENTERLINE OF ROAD
- EXISTING TREE
- LIMIT OF PROPERTY
- PROPOSED SEDIMENT CONTROL FENCE (AS PER CITY STD. 2940.010)
- TREE PROTECTION BARRIER (REFER TO DETAIL ON DWG. 1002)
- PROPOSED CONSTRUCTION FENCE
- PROPOSED CONSTRUCTION ACCESS STONE PAD (AS PER CITY STD. 2970.010)
- CATCHBASIN SILT PROTECTION (REFER TO DETAIL ON DWG. 1002)
- PROPOSED FENCE
- PROPOSED GATE
- PROPOSED TEST-PIT BOREHOLES

ELEVATION NOTE

ELEVATIONS SHOWN ON THIS PLAN ARE RELATED TO GEODETIC DATUM AND ARE DERIVED FROM THE CITY OF MISSISSAUGA BENCHMARKS:
No. 72: ELEVATION=76.128m
No. 73: ELEVATION=61.38m

BENCHMARK NOTE

LB#1 SANITARY MANHOLE 0.696m FROM THE CENTER LINE OF THE ROAD AT THE INTERSECTION OF ANN STREET AND HIGH STREET.
ELEVATION=80.36m
LB#2 SANITARY MANHOLE 1.345m FROM THE CENTER LINE OF THE ROAD AT THE INTERSECTION OF PARK STREET AND HURONTARIO STREET.
ELEVATION=82.51m

TOPOGRAPHIC SURVEY PREPARED BY J.D. BARNES LIMITED, JANUARY 28, 2020.

ISSUED FOR 3RD REVISION SUBMISSION DATE: APR. 19, 2023	ISSUED FOR OPA & REVISION SUBMISSION DATE: AUG. 02, 2023	REVISED GRADING DATE: JAN. 19, 2024	4TH ROUND OPA & REVISION DATE: JUN. 19, 2024
---	---	--	---



Urbantech Consulting
A Division of Leighton-Zec West Ltd.
2030 Bristol Circle, Suite 105
Oakville, ON, L6H 0H2
TEL: 905.829.8818 • urbantech.com

10 WEST GO GP INC.
17 & 19 ANN STREET, 84 & 90 HIGH STREET
OZ OPA 22-3



EROSION & SEDIMENT CONTROL PLAN

REGION FILE No. XXX	CITY FILE No. XXX
SCALE: 1:250	AREA: Z-08-C5/D
DRAWN BY: A.G.	CHECKED BY: R.M./R.B.T.M
DATE: APRIL 2023	SHEET: OF
PROJECT No. 19-241	PLAN No. 1001

PLOT DATE: June 27, 2024 3:07:40 PM

File: F:\PROJECTS\19-241 ANN & HIGH STREET\1000 - EROSION\1001-EROSION & SEDIMENT CONTROL PLAN.DWG