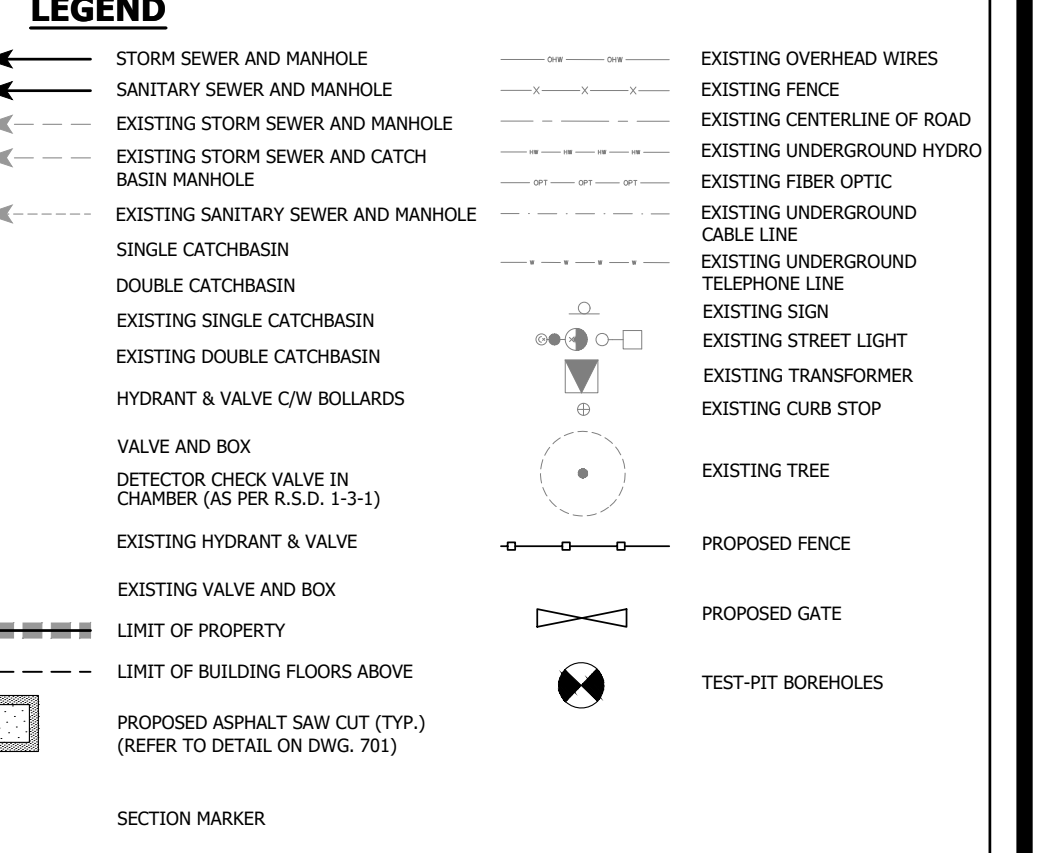
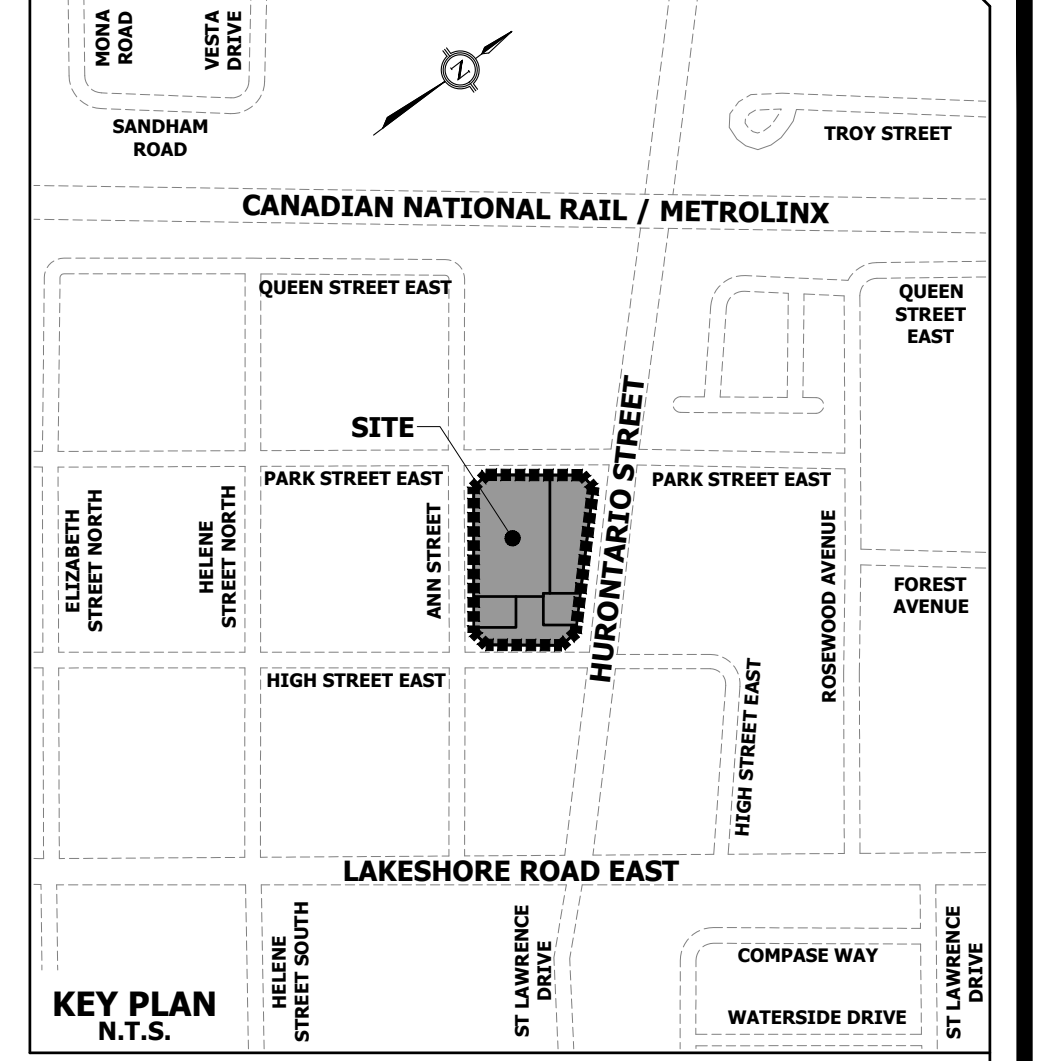
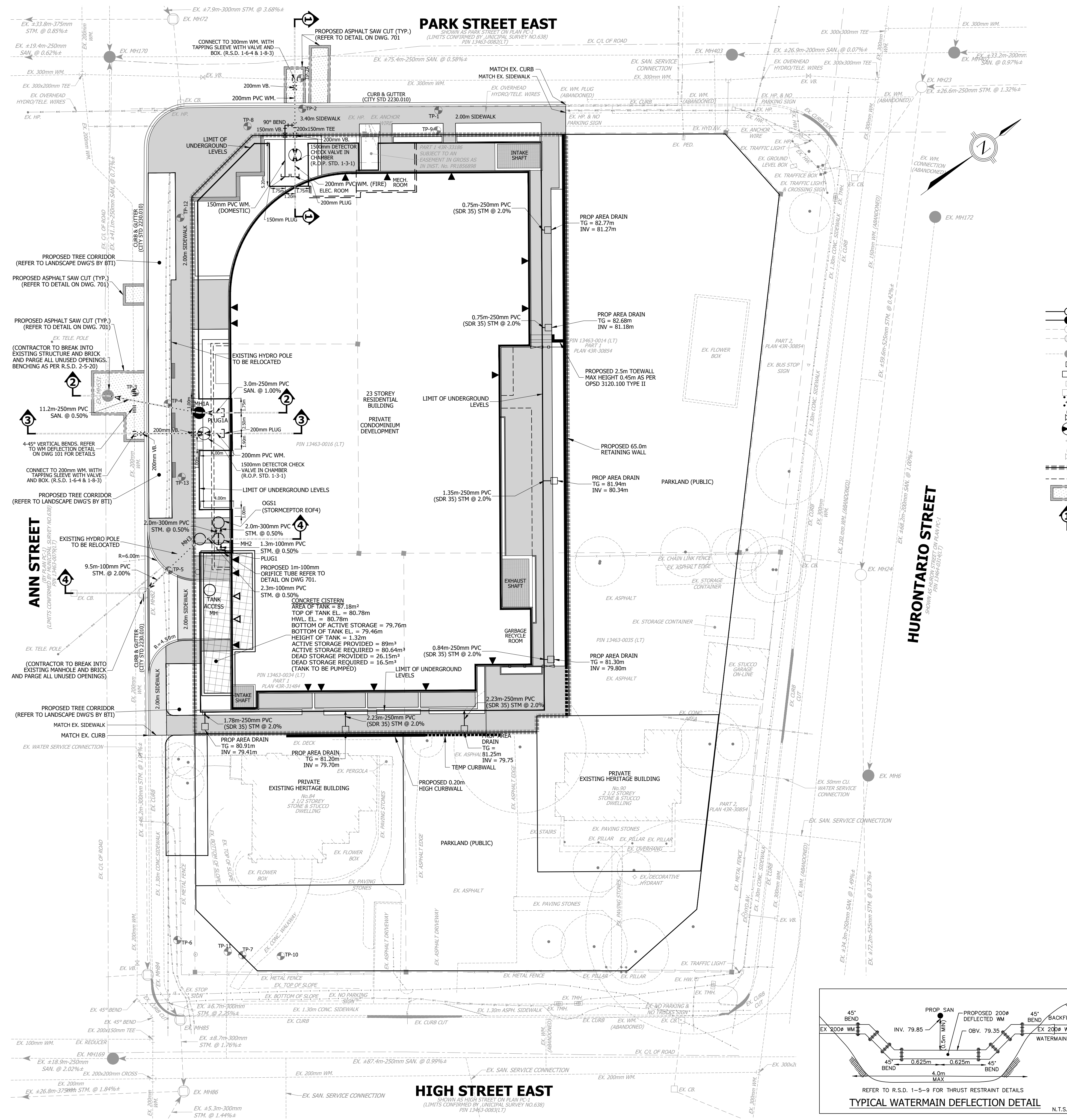
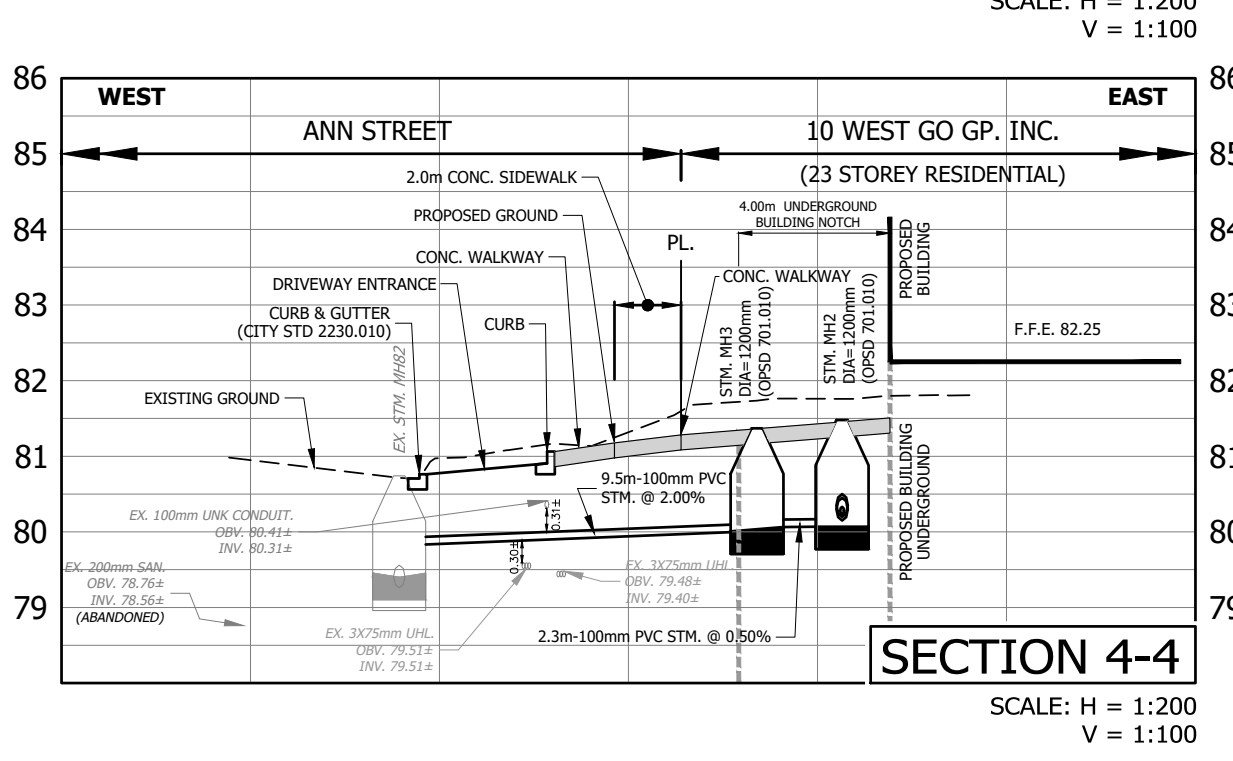
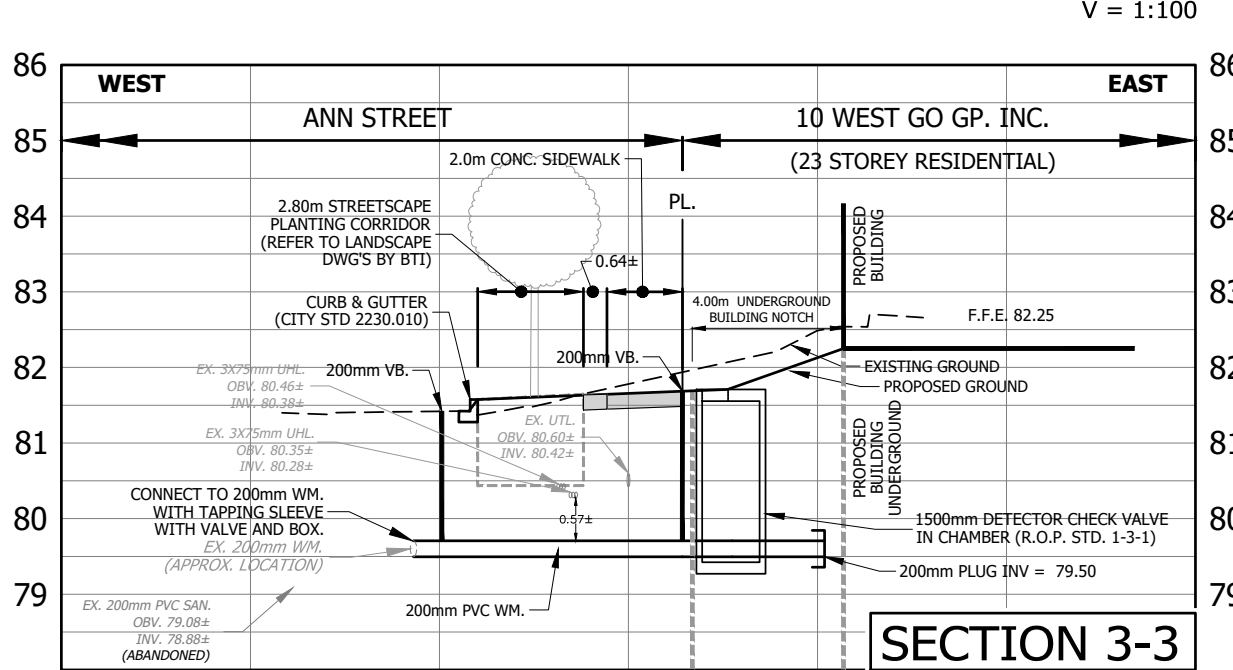
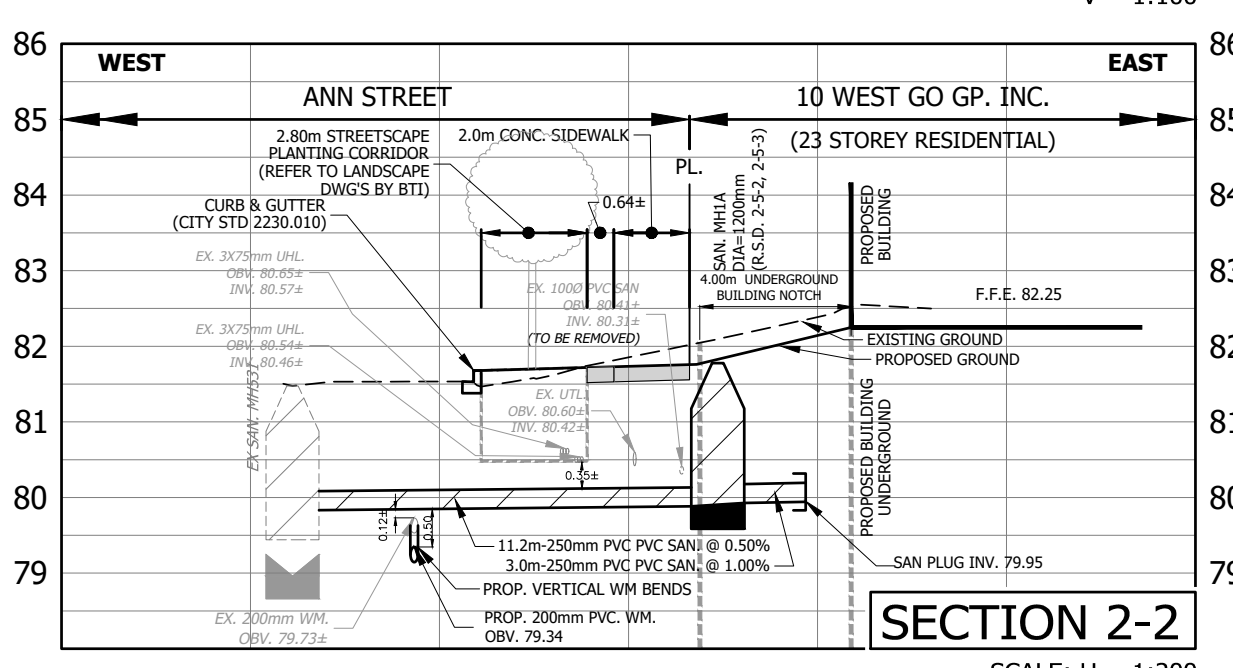
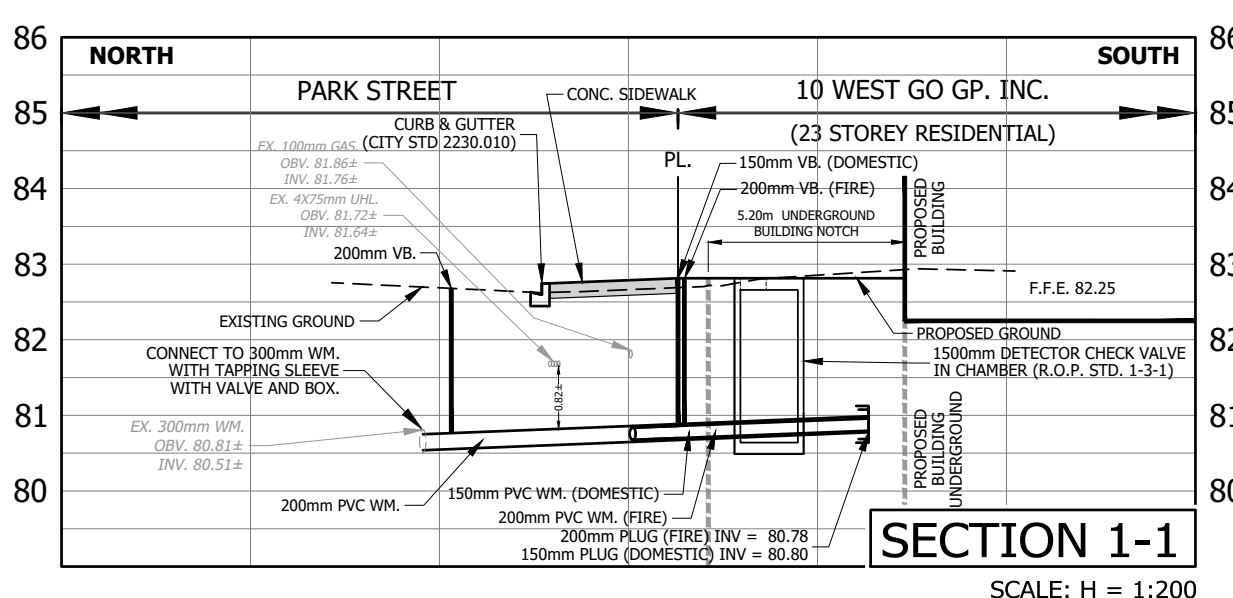


STRUCTURE:	DETAILS:	STANDARD:	TOP ELEV.:	INVERTS:
EX.MH51				
MH1A	1200 mm MH	(R.S.D. 2-5-2, 2-5-3)	TOP = 81.48	NW 79.78 # NE 79.26 #
PLUG1A				SE 80.33 SW 80.15 NW 80.20

STRUCTURE:	DETAILS:	STANDARD:	TOP ELEV.:	INVERTS:
EX.MH2				
MH2	1200 mm MH	(OPSD 701.010)	TOP = 81.48	SE 80.33 SW 80.15 NW 80.20
MH3	1200 mm MH	(OPSD 701.010)	TOP = 81.37	NE 80.06 S 80.01
CESS	1200 mm MH	(OPSD 701.010)	TOP = 81.50	SE 80.16 SW 80.19
TANK ACCESS MH			TOP = 81.16	NW 80.24

STRUCTURE:	INVERTS:
EX.MH1	NW 78.70#
EX.MH6	NW 78.96# SE 78.96#
EX.MH7	NE 79.2# SW 79.25#
EX.MH9	NE 77.54# SW 77.53#
EX.MH10	NE 79.51# NE 79.4# NW 79.52# SW 79.61#
EX.MH11	SE 80.69#
EX.MH12	SE 79.65#
EX.MH13	SE 78.46# SW 78.42# NW 78.64#
EX.MH14	SW 80.41#
EX.MH15	NE 80.08# SW 79.97# NW 80.14#
EX.MH16	NE 79.95# SW 79.95#
EX.MH17	NW 79.78#

STRUCTURE:	INVERTS:
EX.MH22	SE 78.62#
EX.MH23	NW 78.35# SE 78.35# NE 80.20#
EX.MH24	NW 78.18# SE 78.10#
EX.MH25	NW 78.83# SE 75.79#
EX.MH26	NW 78.55#
EX.MH27	SW 80.55#
EX.MH28	SE 81.38#
EX.MH29	NW 80.77# E 80.77#
EX.MH30	W 80.48# SW 80.48#
EX.MH31	SE 79.26#
EX.MH32	NW 78.79# E 78.79#
EX.MH33	W 78.64# SE 78.64#
EX.MH34	NW 78.49# SE 78.41# NW 77.50#
EX.MH35	NW 78.64#
EX.MH36	SE 78.49# NW 78.49#



**ELEVATION NOTE**  
ELEVATIONS SHOWN ON THIS PLAN ARE RELATED TO GEODETIC DATUM AND ARE DERIVED FROM THE CITY OF MISSISSAUGA BENCHMARKS:  
No. 732 ELEVATION=78.12m  
No. 731 ELEVATION=81.38m

**BENCHMARK NOTE**  
LBH1 SANITARY MANHOLE 0.696m FROM THE CENTER LINE OF THE ROAD AT THE INTERSECTION OF ANN STREET AND HIGH STREET, ELEVATION=80.36m  
LBH2 SANITARY MANHOLE 1.345m FROM THE CENTER LINE OF THE ROAD AT THE INTERSECTION OF PARK STREET AND HURONTARIO STREET, ELEVATION=82.51m

ISSUED FOR 3RD ROUND SUBMISSION	ISSUED FOR OPA & REVISION SUBMISSION	REVISED GRADING	4TH ROUND OPA & REVISION SUBMISSION
DATE: APR. 19, 2023	DATE: AUG. 02, 2023	DATE: JAN. 19, 2024	DATE: JUN. 19, 2024



**Urbantech Consulting**  
A Division of Leighton-Zec West Ltd.  
2030 Bristol Circle, Suite 105  
Oakville, ON, L6H 0H2  
TEL: 905.829.8818 • urbantech.com

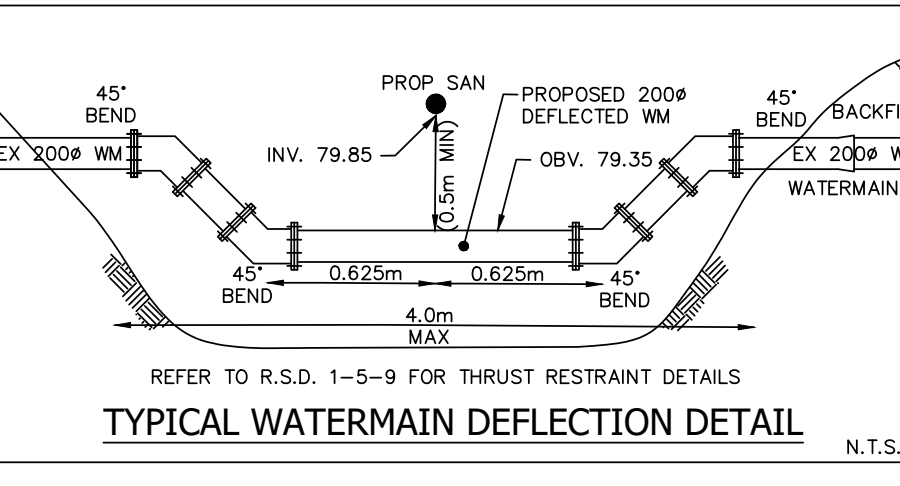
**10 WEST GO GP INC.**  
17 & 19 ANN STREET, 84 & 90 HIGH STREET  
OZ OPA 22-3

**Region of Peel**  
working with you

**MISSISSAUGA**

**SERVICING PLAN**

SCALE:	1:250	AREA	Z-08-C5/D	CITY FILE No.	19-241
DRAWN BY:	A.G.	CHECKED BY:	R.M./R.B.T.M	PROJECT No.	101
DATE:	APRIL 2023	SHEET	OF	C-	



PLOT DATE: June 27, 2024 3:04:40 PM