

© 2024 GOOGLE, MAP DATA © 2024 TELE ATLAS
 LOCATION PLAN
 NTS

LEGEND

PROPOSED PROPERTY LINE	---
EXISTING PROPERTY LINE	---
PROPOSED LOT LINE	---
BUILDING PERIMETER AT GROUND LEVEL	---
PROPOSED SANITARY MANHOLE	○
PROPOSED STORMWATER MANHOLE	○
PROPOSED STORM TANK ACCESS HATCH	○
PROPOSED TREATMENT DEVICE ACCESS HATCH	○
PROPOSED VALVE AND BOX	○
PROPOSED STORM	---
PROPOSED SANITARY	---
PROPOSED WATER	---
EXISTING STORM	---
EXISTING SANITARY	---
EXISTING WATER	---
EXISTING HYDRO	---
EXISTING GAS	---
EXISTING TV	---
EXISTING TELEPHONE	---
EXISTING STREET LIGHT	---
EXISTING FIRE HYDRANT	○
PROPOSED FIRE HYDRANT	○

LIST OF DRAWINGS

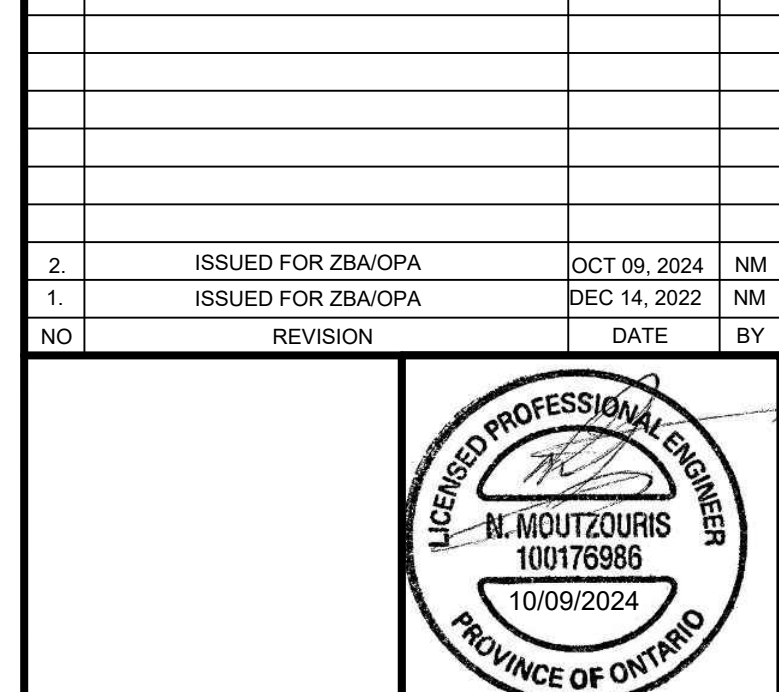
- C101 (SITE GRADING PLAN)
- C201 (SITE SERVING PLAN)
- C301 (COMPOSITE UTILITIES PLAN)
- C401 (UTILITIES CROSS SECTIONS)

SITE PLAN INFORMATION
 GENSLER
 150 King Street West, Suite 1400
 Toronto, ON M5H 1J9
 TEL: (416) 601 3890
 www.gensler.com

SURVEY INFORMATION
 J. D. BARNES SURVEYING LIMITED
 LAND INFORMATION SPECIALISTS
 401 WHEELABRATOR WAY, SUITE A, MILTON, ON L9T 3C1
 TEL: (905) 875-9855 FAX: (905) 875-9666
 www.jdbarnes.com

BENCHMARK
 ELEVATIONS SHOWN ON THIS PLAN ARE DERIVED FROM THE
 CITY OF MISSISSAUGA BENCHMARKS:
 No. 1035 ELEVATION = 98.025 m
 No. 1036 ELEVATION = 100.258 m

NO.	ISSUED FOR ZBA/OPA	DATE	BY
1	ISSUED FOR ZBA/OPA	DEC 14, 2022	NM
2	ISSUED FOR ZBA/OPA	OCT 09, 2024	NM



CITY OF MISSISSAUGA
 COMPOSITE UTILITIES PLAN
 MIXED USE DEVELOPMENT
 2077-2105 ROYAL WINDSOR DRIVE
 MISSISSAUGA, ONTARIO

Lithos
 150 Berrymore Road, Toronto, Ontario, M6A 1Y1

DESIGNED BY: DS	DATE: DEC 06, 2022	CHECKED BY: NM
DRAWN BY: DS	PROJECT NO:	APPROVED BY: NM
SCALE: 1:500		DRAWING NO:
© COPYRIGHT 2024 Lithos Group Ltd.	UD22-046	C301

I HEREBY CERTIFY THAT THE INFORMATION ON THIS PLAN IS COMPLETE, ACCURATE AND BASED ON PHYSICAL LOCATES, AS PROVIDED BY MARK ITI, ON OCT 16, 2022.

ENGINEERS SIGNATURE