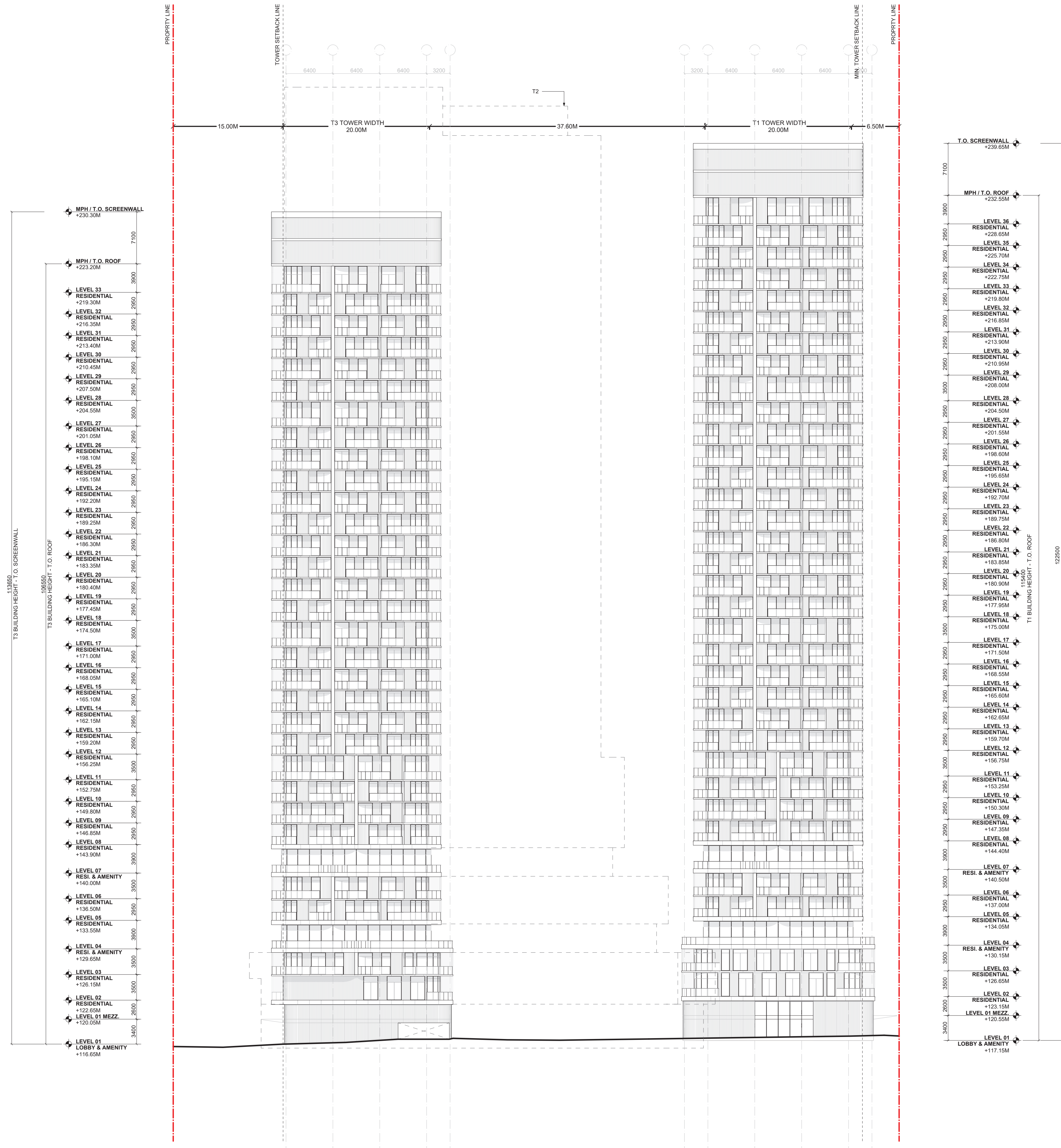


KEY PLAN



1 NORTH ELEVATION 2

1:300

| PRELIMINARY NOT FOR CONSTRUCTION |                                   |            |
|----------------------------------|-----------------------------------|------------|
| ISSUE                            | DESCRIPTION                       | DATE       |
| 1                                | ISSUED FOR RE-ZONING RESUBMISSION | 2024.09.18 |

**OWNER**  
**EQUITY THREE HOLDINGS INC.**  
 3300 BLOOR STREET WEST, SUITE 1800  
 TORONTO, ON M8X 2X2  
 T 905 907 8888

**MATTAMY HOMES CANADA**

**DESIGN ARCHITECT**  
**3XN USA LLC**  
 141 FLUSHING AVE, BLDG 77, FL 12, STE 07  
 BROOKLYN, NY 11205  
 T +1 646 843 9770



**ARCHITECT OF RECORD**  
**KIRKOR**  
 20 DE BOERS DR, SUITE 400  
 TORONTO ON M3J 0H1  
 T 416 665 6900



**CONSULTANTS**  
**NAK**  
 421 RONCESVALLES AVE  
 TORONTO, ON M6R 2N1



**JABLONSKY AST AND PARTNERS**  
 3 CONCORDE GATE, 4TH FLOOR  
 TORONTO, ON M3C 3N7



**SMITH + ANDERSEN**  
 1100 - 100 SHEPPARD AVE. EAST  
 TORONTO, ON M2N 6N5



**SOBERMAN ENGINEERING**  
 60 ST. CLAIR AVENUE EAST, SUITE 806  
 TORONTO, ON M4T 1N5



**SPANIER GROUP**  
 786 ST. CLAIR AVE W SUITE B  
 TORONTO, ON M6C 1R6



**URBANTECH**  
 2008 BRISTOL CIRCLE, SUITE 105  
 OAKVILLE, ON L6H 0H2



**WALMSLEY ENVIRONMENTAL**  
 163-30 OLD MILL ROAD  
 ETOBICOKE, ON M8X 0A5



**FOOTPRINT**  
 100 SHEPPARD AVE. E, SUITE 1100  
 TORONTO, ON M2N 6N5



**BA CONSULTING GROUP**  
 95 ST. CLAIR AVE. W, SUITE 1000  
 TORONTO, ON M4V 1N6



**GRADIENT WIND ENGINEERING**  
 127 WALGREEN ROAD  
 OTTAWA, ON K0A 1L0



**GLEN SCHNARR & ASSOCIATES**  
 10 KINGSBRIDGE GARDEN CIRCLE, SUITE 700  
 MISSISSAUGA, ON L5R 3K6



**PRIMARY ENGINEERING**  
 EAST TOWER, 77 CITY CENTRE DR, SUITE 501  
 MISSISSAUGA, ON L5B 1M5



**HGC ENGINEERING**  
 2000 ARGENTIA ROAD, PLAZA 1, SUITE 203  
 MISSISSAUGA, ON L5N 1P7



**3085 HURONTARIO ST**  
 3085 HURONTARIO ST. MISSISSAUGA  
 ON L5A 2G9

DRAWING TITLE

**NORTH  
 ELEVATION 2**

PROJECT NUMBER 850010  
 SCALE 1:300  
 SHEET SIZE ARCH D

DRAWING NO. **A204**

DATE 2024.09.18  
 REVIEWED BY DK1