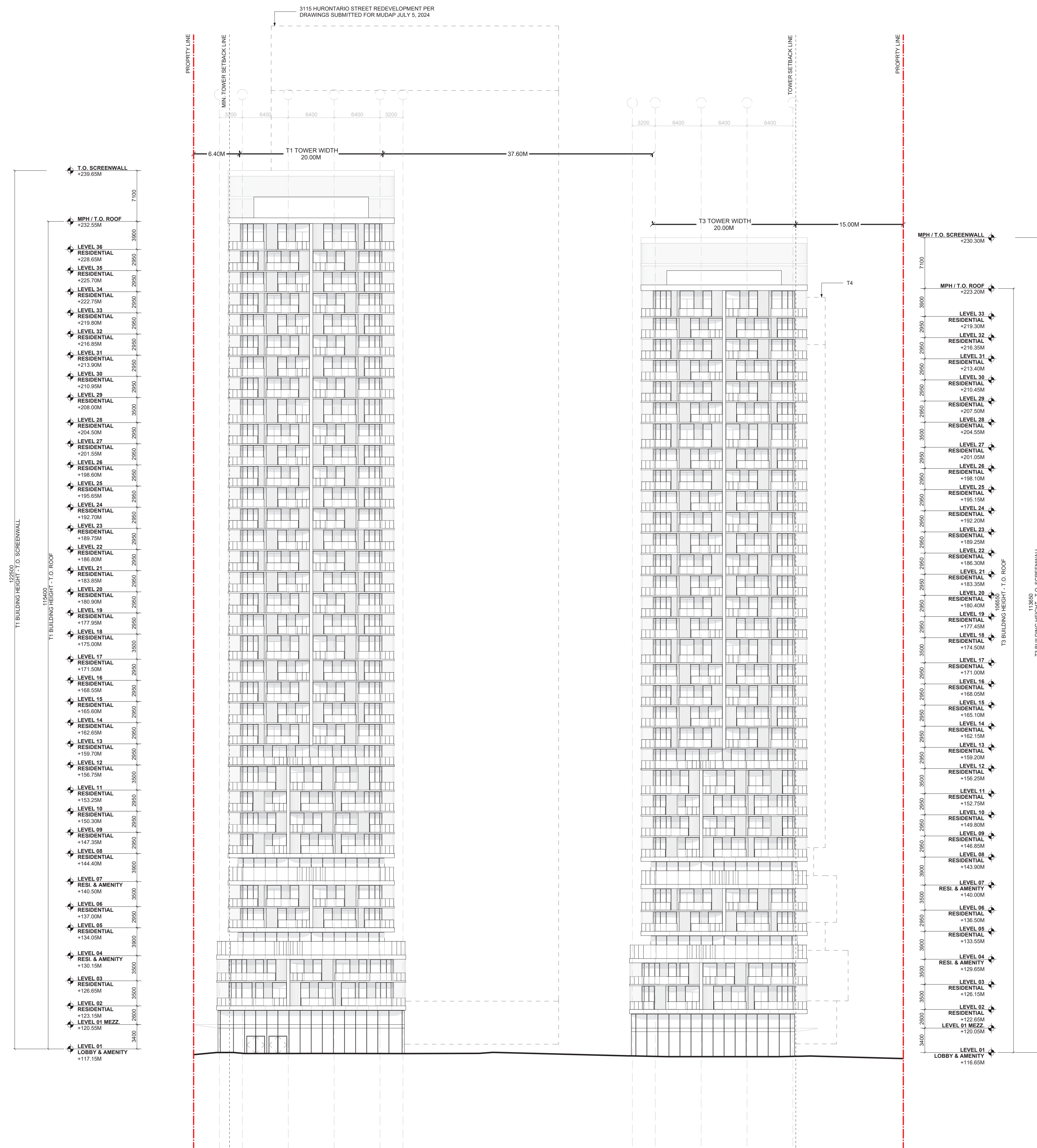


KEY PLAN



1 SOUTH ELEVATION 2

1:300

PRELIMINARY  
NOT FOR CONSTRUCTION

ISSUE	DESCRIPTION	DATE
1	ISSUED FOR RE-ZONING RESUBMISSION	2024.09.18

**OWNER**  
EQUITY THREE HOLDINGS INC.  
3300 BLOOR STREET WEST, SUITE 1800  
TORONTO, ON M8X 2X2  
T 905 907 8888

**MATTAMY HOMES CANADA**

**DESIGN ARCHITECT**  
3XN USA LLC  
141 FLUSHING AVE, BLDG 77, FL 12, STE 07  
BROOKLYN, NY 11205  
T +1 646 843 9770

**ARCHITECT OF RECORD**  
KIRKOR  
20 DE BOERS DR, SUITE 400  
TORONTO ON M3J 0H1  
T 416 665 6000

**CONSULTANTS**  
NAK  
421 RONCESVALLES AVE  
TORONTO, ON M6R 2N1

JABLONSKY AST AND PARTNERS  
3 CONCORDE GATE, 4TH FLOOR  
TORONTO, ON M3C 3N7

SMITH + ANDERSEN  
1100 - 100 SHEPPARD AVE. EAST  
TORONTO, ON M2N 6N5

SOBERMAN ENGINEERING  
60 ST. CLAIR AVENUE EAST, SUITE 806  
TORONTO, ON M4T 1N5

SPANIER GROUP  
786 ST. CLAIR AVE W SUITE B  
TORONTO, ON M6C 1B6

URBANTECH  
2008 BRISTOL CIRCLE, SUITE 105  
OAKVILLE, ON L6H 0H2

WALMSLEY ENVIRONMENTAL  
163-30 OLD MILL ROAD  
ETOBICOKE, ON M8X 0A5

FOOTPRINT  
100 SHEPPARD AVE E, SUITE 1100  
TORONTO, ON M2N 6N5

BA CONSULTING GROUP  
95 ST. CLAIR AVE. W, SUITE 1000  
TORONTO, ON M4V 1N6

GRADIENT WIND ENGINEERING  
127 WALGREEN ROAD  
OTTAWA, ON K0A 1L0

GLEN SCHNARR & ASSOCIATES  
10 KINGSBRIDGE GARDEN CIRCLE, SUITE 700  
MISSISSAUGA, ON L5R 3K6

PRIMARY ENGINEERING  
EAST TOWER, 77 CITY CENTRE DR, SUITE 501  
MISSISSAUGA, ON L5B 1M5

HGC ENGINEERING  
2000 ARGENTIA ROAD, PLAZA 1, SUITE 203  
MISSISSAUGA, ON L5N 1P7

**3085 HURONTARIO ST**  
3085 HURONTARIO ST. MISSISSAUGA  
ON L5A 2G9

DRAWING TITLE

**SOUTH  
ELEVATION 2**

PROJECT NUMBER 850010  
SCALE 1:300  
SHEET SIZE ARCH D

DRAWING NO. **A201**

DATE 2024.09.18  
REVIEWED BY DK1