

THE FOLLOWING GENERAL NOTES ARE FOR REMOVALS AND EROSION AND SEDIMENT CONTROL WORKS ONLY. ADDITIONAL GENERAL NOTES ARE TO BE REFERENCED FROM THE SERVING AND GRADING DRAWING. ALL NOTES AND GENERAL NOTES SHALL BE READ IN CONJUNCTION WITH THE CONTRACT SPECIFICATIONS.

GENERAL

- CONSTRUCTION SHALL BE IN CONFORMANCE WITH THE EPA 832R-92-005, CHAPTER 3, AND THE "ONTARIO OCCUPATIONAL HEALTH AND SAFETY ACT AND REGULATIONS FOR CONSTRUCTION PROJECTS".
- ALL DIMENSIONS ARE IN METRES OR MILLIMETRES.
- THE POSITION OF EXISTING POLES, OVERHEAD LINES, CONDUITS, WATERMANS, SEWERS AND OTHER UNDERGROUND OR ABOVEGROUND UTILITIES, STRUCTURES AND APPURTENANCES IS NOT NECESSARILY SHOWN ON THE DRAWINGS, AND WHERE SHOWN, THE ACCURACY OF THE POSITION OF SUCH UTILITIES IS NOT GUARANTEED.
- PRIOR TO CONSTRUCTION, THE CONTRACTOR SHALL OBTAIN ALL NECESSARY UTILITY STAKEOUTS TO VERIFY THE LOCATION OF ANY HYDRO, BELL, CABLE TV OR GAS UTILITY LINES, AND WHERE REQUIRED, PROVIDE ADEQUATE PROTECTION OF EXISTING UTILITY LINES AND PLANT. BEFORE COMMENCING CONSTRUCTION, THE CONTRACTOR SHALL SATISFY HIMSELF OF THE EXACT LOCATION OF ALL EXISTING UTILITIES AND STRUCTURES, AND ASSUME ALL LIABILITY RESULTING FROM DAMAGE TO THEM DURING THE COURSE OF CONSTRUCTION.
- THE CONTRACTOR SHALL BE RESPONSIBLE FOR MAINTAINING POSITIVE SURFACE DRAINAGE FOR THE DURATION OF THE CONSTRUCTION PERIOD.
- ALL GEOTECHNICAL INFORMATION, INCLUDING BOREHOLE LOGS AND ENGINEERED-FILL SPECIFICATIONS, ARE TO BE OBTAINED FROM THE GEOTECHNICAL CONSULTANT.
- CONSTRUCTION SHALL NOT COMMENCE UNTIL ALL UTILITY LOCATIONS HAVE BEEN VERIFIED AND ALL PERMITS HAVE BEEN RECEIVED.

SITE CONTROL MEASURES

- THE CONTRACTOR SHALL BE RESPONSIBLE FOR THE CONDITION OF THE SITE AT ALL TIMES.
- IF CONSTRUCTION IS INTERRUPTED AND/OR INACTIVITY EXCEEDS 30 DAYS, STRIPPED/BARE AREAS WILL BE STABILIZED BY SEEDING.
- THE DEVELOPMENT AREA FOR STRIPPING AND EXCAVATION IS APPROXIMATELY 0.59 HA.
- ALL EROSION AND SEDIMENT CONTROL MEASURES INCLUDING THE SEDIMENTATION FENCING, CATCH-BASIN CONTROL DEVICE, MUD MAT AND OTHER EROSION CONTROL MEASURES SHALL BE INSTALLED PRIOR TO COMMENCEMENT OF ANY EARTH MOVING.
- CONTRACTOR SHALL NOTIFY THE CONSULTANT 48 HOURS PRIOR TO THE COMMENCEMENT OF GRADING ACTIVITIES OF CONSTRUCTION.
- ALL ROADSIDE CATCHBASINS TO HAVE SEDIMENT PROTECTION AS PER DETAIL ON THIS DRAWING. SEDIMENT PROTECTION BARRIER TO BE MAINTAINED ON A REGULAR BASIS OR TO THE SATISFACTION OF THE CITY OF MISSISSAUGA.
- ALL SEDIMENT REMOVED FROM SEDIMENT TRAPS SHALL BE DISPOSED OFF-SITE IN LOCATIONS ACCEPTABLE TO AND IN ACCORDANCE WITH CITY REGULATIONS.
- CONTRACTOR SHALL BE RESPONSIBLE FOR MAINTAINING ALL EROSION AND SEDIMENT CONTROL DEVICES IN GOOD WORKING ORDER AT ALL TIMES. THE CONTRACTOR SHALL INSPECT SUCH DEVICES AT LEAST ONCE A WEEK AND AFTER EACH RAIN FALL EVENT, AND MAKE ALL NECESSARY REPAIRS AS REQUIRED.
- ONGOING INSPECTION, MONITORING AND MAINTENANCE OF THE SILTATION CONTROL FENCE SHALL BE PROVIDED; RELOCATION OF THE SILTATION CONTROL FENCE SHALL BE UNDERTAKEN DURING CONSTRUCTION WHEN IT IS DEEMED NECESSARY BY THE PRACTITIONER OR WHEN IT IS RECOMMENDED BY THE ENVIRONMENTAL INSPECTOR.

TRAFFIC CONTROL AND MUD TRACKING

- CONTRACTOR TO BE RESPONSIBLE FOR ALL TRAFFIC CONTROL AND SINAGE. CONTRACTOR IS REQUIRED TO ADHERE TO ALL CONDITIONS SET OUT BY THE CITY OF MISSISSAUGA.
 - DURING ALL CONSTRUCTION PHASES, MUD TRACKING CONTROL, CONSISTING OF FLUSHING AND SWEEPING ROADS, IS TO BE PROVIDED FOR ALL ROADS, AS WARRANTED, IN ACCORDANCE WITH THE CITY OF MISSISSAUGA POLICIES.
 - ALL CONSTRUCTION VEHICLES TO ENTER AND LEAVE THE SITE AT APPROVED LOCATIONS ONLY. ALL VEHICLES MUST TRAVEL OVER A VIBRATORY MUD MAT WHEN LEAVING THE SITE.
 - THE CONTRACTOR IS RESPONSIBLE FOR CLEANUP OF MUDTRACKING ON A DAILY BASIS OR ON A MORE FREQUENT BASIS IF DIRECTED BY THE CITY OR THE CONSULTANT.
 - CONTRACTOR TO LIMIT CONSTRUCTION ACTIVITIES WITHIN THE LIMITS OF CONSTRUCTION SHOWN ON THE DRAWINGS. CONTRACTOR TO RESTORE ALL DISTURBED AREAS OUT SIDE THE WORKING AREA TO ORIGINAL CONDITIONS AND TO THE SATISFACTION OF THE CITY OF MISSISSAUGA.
 - IF NECESSARY, TRUCKS SHALL BE WASHED DOWN BEFORE LEAVING THE SITE.
 - CONTRACTOR TO CONFORM TO ALL CITY OF MISSISSAUGA NOISE AND DUST CONTROL STANDARDS AND BY-LAWS. THE SITE MUST BE WET DOWN IF NECESSARY TO CONTROL DUST.
- EROSION AND SEDIMENT CONTROL**
- EROSION AND SEDIMENT CONTROL (ESC) MEASURES WILL BE IMPLEMENTED PRIOR TO, AND MAINTAINED DURING CONSTRUCTION PHASES, TO PREVENT ENTRY OF SEDIMENT INTO THE WATER. ALL DAMAGED EROSION AND SEDIMENT CONTROL MEASURES SHOULD BE REPAIRED OR REPLACED WITHIN 48 HOURS OF INSPECTION OR BOTH.
 - ALL DISTURBED AREAS WILL BE MINIMIZED TO THE EXTENT POSSIBLE, AND TEMPORARILY OR PERMANENTLY STABILIZED OR RESTORED AS WORK PROGRESSES.
 - THE EROSION AND SEDIMENT CONTROL STRATEGIES OUTLINED ON THE PLANS ARE NOT STATIC AND MAY NEED TO BE UPGRADED/AMENDED AS SITE CONDITIONS CHANGE TO MINIMIZE SEDIMENT LADEN RUNOFF FROM LEAVING THE WORK AREA. IF THE PRESCRIBED MEASURES MUST BE IMPLEMENTED IMMEDIATELY TO MINIMIZE POTENTIAL ECOLOGICAL IMPACTS AND A CREDIT VALLEY CONSERVATION AUTHORITY ENFORCEMENT OFFICE SHOULD BE IMMEDIATELY CONTACTED. ADDITIONAL ESC MEASURES TO BE KEPT ON SITE AND USED AS NECESSARY.
 - ALL ACTIVITIES, INCLUDING MAINTENANCE PROCEDURES, WILL BE CONTROLLED TO PREVENT THE ENTRY OF PETROLEUM PRODUCTS, DEBRIS, RUBBLE, CONCRETE OR OTHER DELETERIOUS SUBSTANCES INTO THE WATER. VEHICULAR REFUELLING AND MAINTENANCE AND REFUELLING WILL BE CONDUCTED A MINIMUM OF 30M FROM THE WATER.
 - ALL GRADES WITHIN THE REGULATORY FLOOD PLAN WILL BE MAINTAINED OR MATCHED.

REMOVALS AND REINSTATEMENT

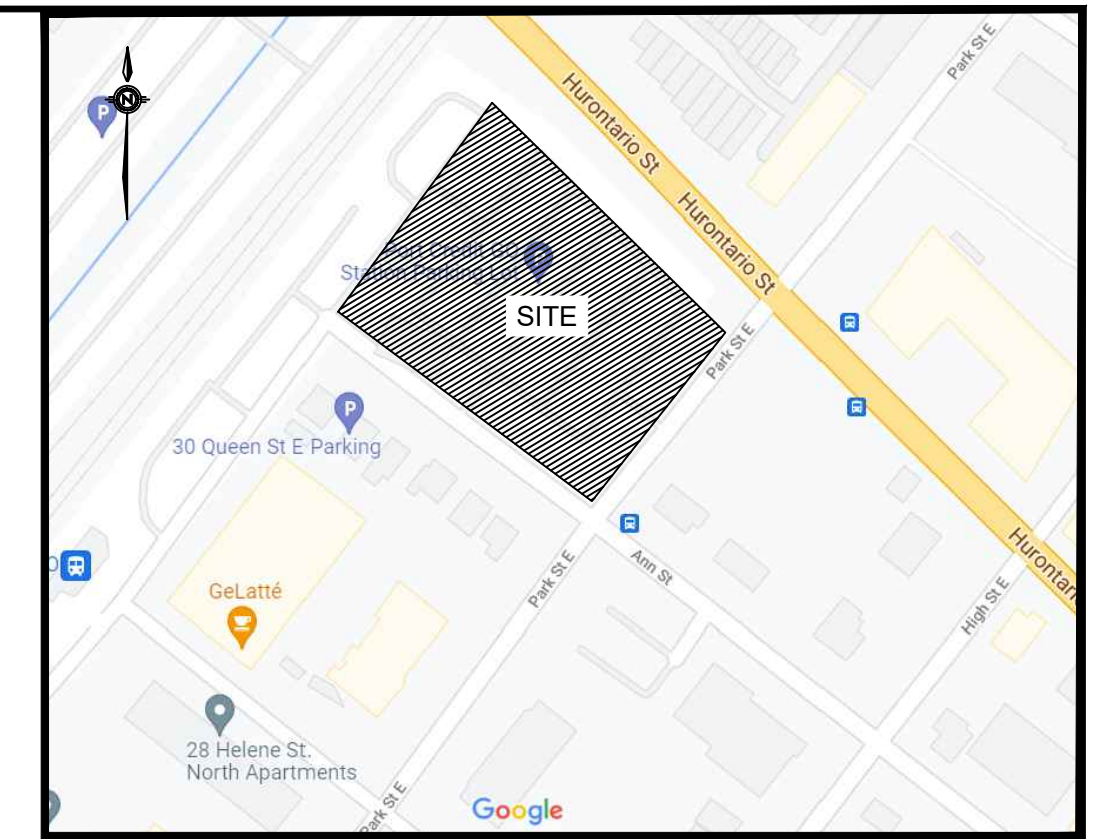
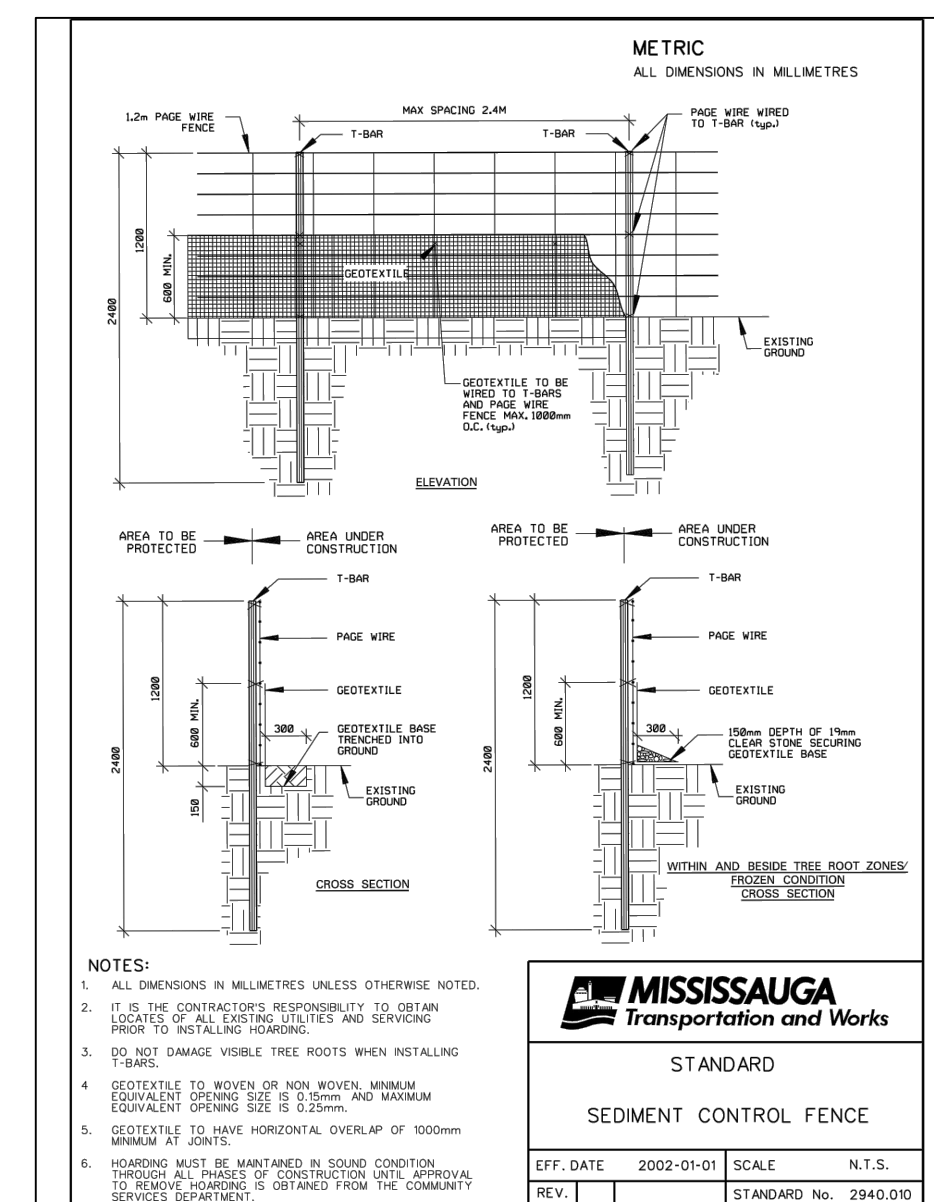
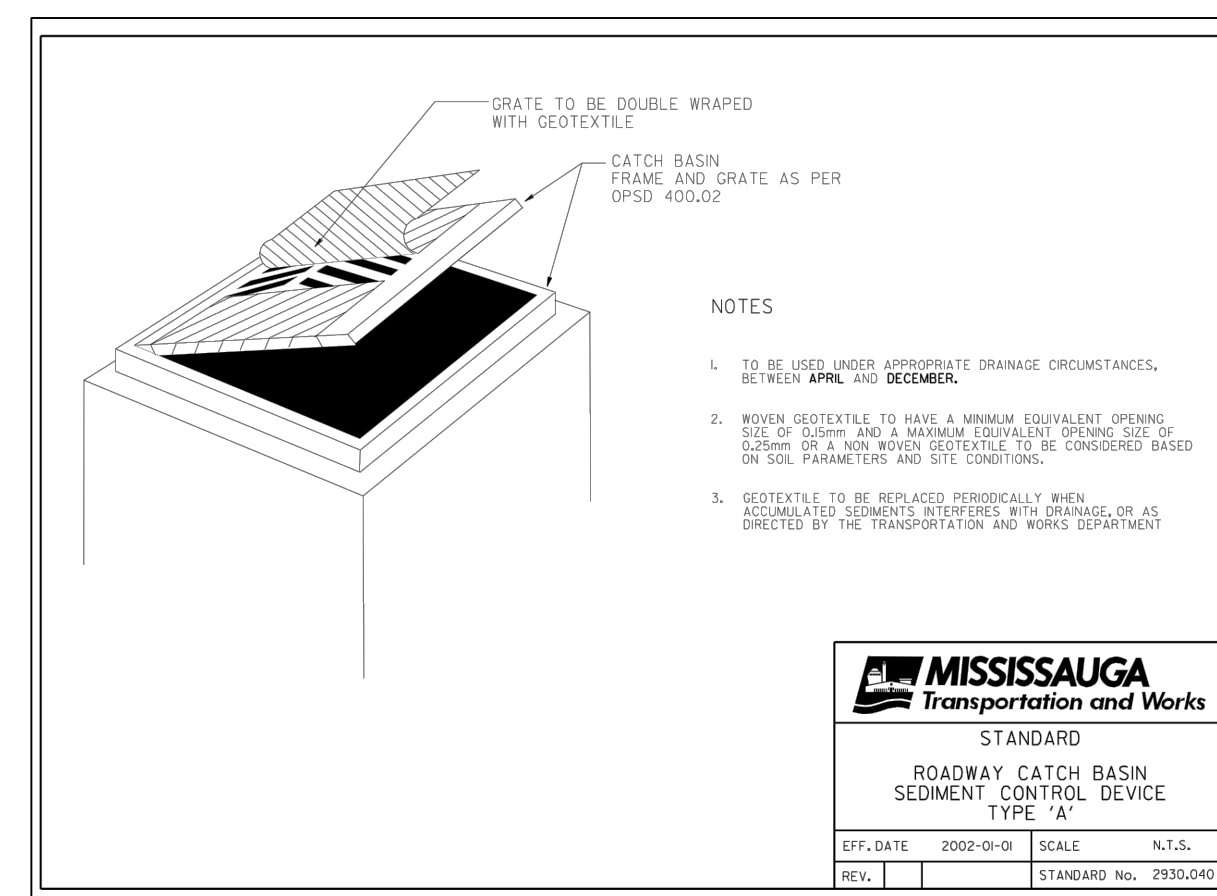
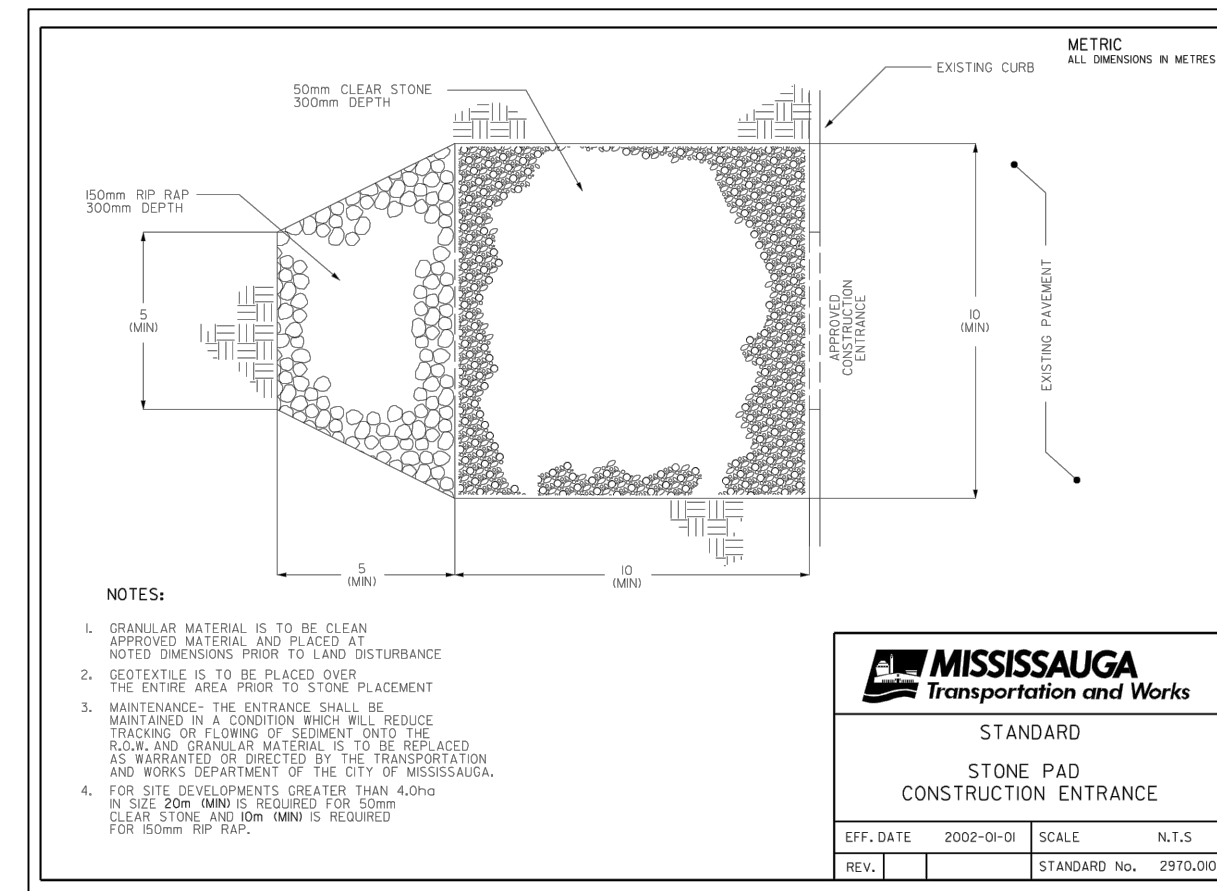
- ALL STRUCTURES, SURFACE TREATMENTS AND MATERIALS REMOVED FROM THIS SITE MUST BE DISPOSED OF OFF-SITE MEETING ALL REGULATIONS AND REQUIREMENTS OF THE MINISTRY OF THE ENVIRONMENT AND THE CITY OF MISSISSAUGA.
- ALL SITE EXCAVATION AND RESULTING DRAINAGE PATTERNS SHALL NOT ADVERSELY AFFECT ADJACENT LANDS.
- ANY DE-WATERING OF EXCAVATIONS ON THIS SITE MUST CONFORM TO THE CITY OF MISSISSAUGA SEWER USE BY LAW.
- IF ANY SEWER OR WATER SERVICES THAT ARE NOT IDENTIFIED ON THIS PLAN ARE DISCOVERED ON THIS SITE BY THE CONTRACTOR, THEY SHALL NOTIFY THE CONSULTANT IMMEDIATELY. IF IT IS DETERMINED THAT THE EXISTING SEWER OR WATER SERVICE IS ABANDONED OR NO LONGER REQUIRED, THE CONTRACTOR SHALL REMOVE THE SERVICE AND ALL ASSOCIATED STRUCTURES TO THE LIMIT OF THE PROPERTY AND DISPOSE OFF-SITE. THE EXISTING SERVICE STUB AT THE PROPERTY LINE SHALL BE PLUGGED WITH A WATERTIGHT PLUG. THE CONTRACTOR SHALL THEN NOTIFY CITY OF MISSISSAUGA OF THE ABANDONED SERVICE CONNECTION SO THAT TORONTO WATER CAN COMPLETE A FORMAL DISCONNECT OF THE MUNICIPAL SERVICE CONNECTION.
- ALL SURFACE FEATURES TO REMAIN SUCH AS ASPHALT, CURBS AND SIDEWALKS THAT ARE DISTURBED, DAMAGED OR REMOVED DURING THE CONTRACTOR ACTIVITIES SHALL BE REINSTATED TO THE ORIGINAL CONDITION.

CONSTRUCTION SEQUENCE

- | | |
|---|-----|
| 34. INITIAL SEDIMENT CONTROL INSTALLATION | TBD |
| SITE EXCAVATING OPERATIONS | TBD |
| BUILDING CONSTRUCTION | TBD |
| FINAL GRADING OPERATIONS | TBD |

DECOMMISSIONING

- CONTRACTOR SHALL BE RESPONSIBLE FOR REMOVAL OF ALL EROSION AND SEDIMENT CONTROL DEVICES AND STRUCTURES ONCE THE SITE HAS STABILIZED.



KEY PLAN

NTS

ELEVATION NOTE:
ELEVATION ARE REFERRED TO CANADIAN GEODETIC VERTICAL DATUM-1928, AND WERE DERIVED FROM THE CITY OF MISSISSAUGA BENCHMARK NO. 379, HAVING A PUBLISHED ELEVATION OF 82.771 METRES. ALL DIMENSIONS AND ELEVATIONS ARE IN METRES UNLESS OTHERWISE NOTED.

PIPE SIZES ARE IN MILLIMETRES.

No.	REVISIONS	BY	DATE	APPR.
2	REISSUED FOR ZBA & OPA	M.M.	JUNE 12, 2023	
1	ISSUED FOR ZBA & OPA	A.K.	FEB. 04, 2022	

ALL PREVIOUS ISSUES OF THIS DRAWING ARE SUPERSEDED

CLIENT
EDENSHAW QUEEN DEVELOPMENTS LIMITED



PROJECT TITLE
88 PARK STREET EAST
PORT CREDIT, ON

SHEET TITLE
EROSION & SEDIMENT CONTROL NOTES



DESIGNED M.D.	DRAWN M.D.	CHECKED M.M.
SCALE N.T.S.	DATE JUNE 2023	
PROJECT NUMBER 211-12423	DWG. NUMBER C109	