

KEY PLAN NTS

LEGEND

- PROPERTY LINE
- SILT FENCE
- CATCHBASIN SEDIMENT CONTROL DEVICE
- MUD MAT

ELEVATION NOTE:
 ELEVATION ARE REFERRED TO CANADIAN GEODETIC VERTICAL DATUM-1928, AND WERE DERIVED FROM THE CITY OF MISSISSAUGA BENCHMARK NO. 379, HAVING A PUBLISHED ELEVATION OF 82.771 METRES. ALL DIMENSIONS AND ELEVATIONS ARE IN METRES UNLESS OTHERWISE NOTED. PIPE SIZES ARE IN MILLIMETRES.

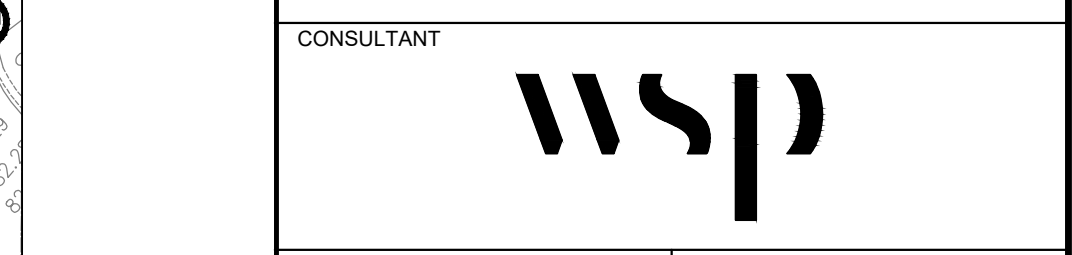
No.	REVISIONS	BY	DATE	APPR
2	REISSUED FOR ZBA & OPA		M.M. JUNE 12, 2023	
1	ISSUED FOR ZBA & OPA	A.K.	FEB. 04, 2022	

ALL PREVIOUS ISSUES OF THIS DRAWING ARE SUPERSEDED
 CLIENT
EDENSHAW QUEEN DEVELOPMENTS LIMITED

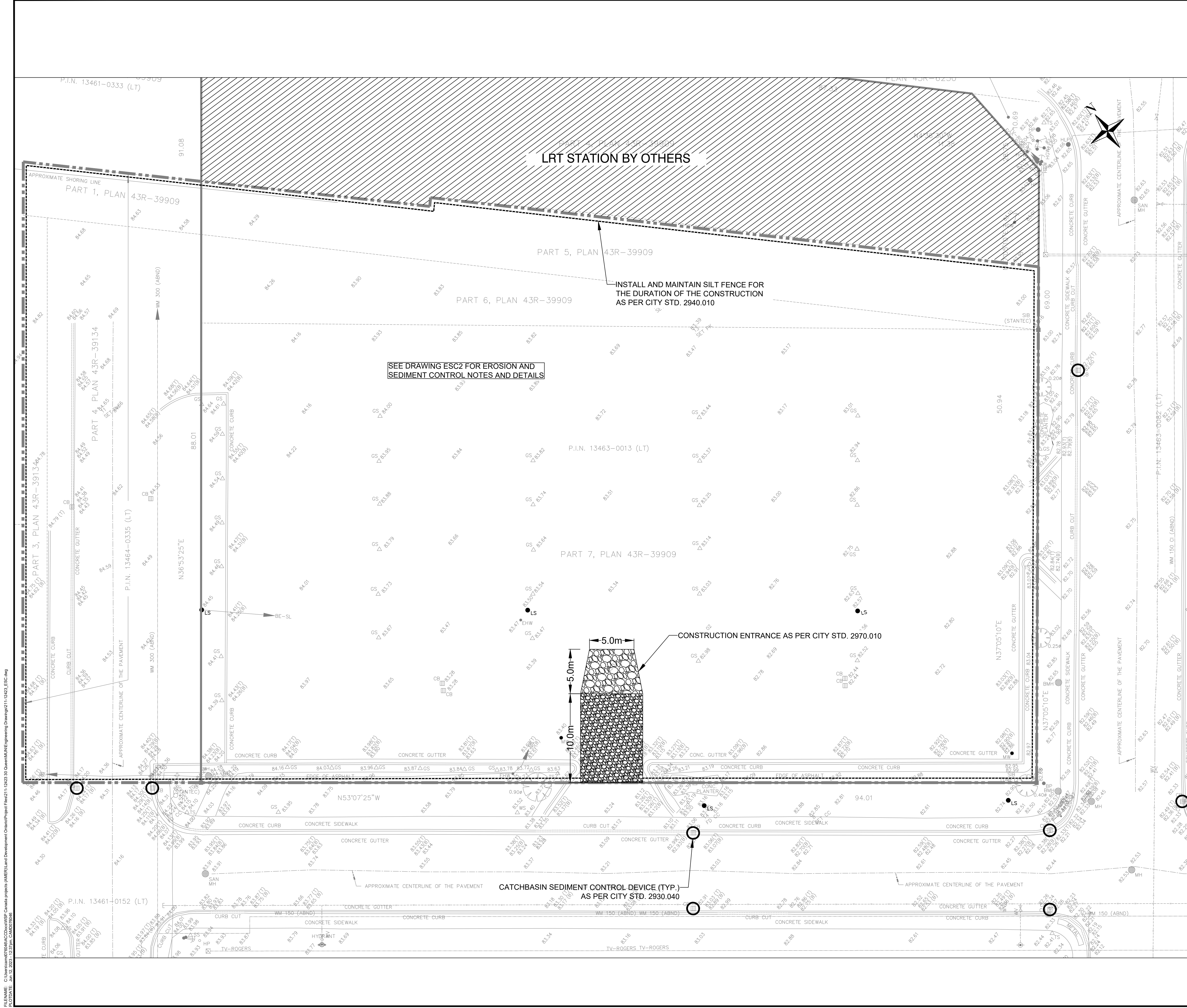


PROJECT TITLE
88 PARK STREET EAST
 PORT CREDIT, ON

SHEET TITLE
EROSION AND SEDIMENT CONTROL PLAN



DESIGNED M.D.	DRAWN M.D.	CHECKED M.M.
SCALE 1:200	DATE JUNE 2023	
PROJECT NUMBER 211-12423	DWG. NUMBER C108	



FILENAME: C:\Users\mitchell\OneDrive\Projects\211-12423\01\Drawings\EROSION AND SEDIMENT CONTROL PLAN.dwg
 PLOT DATE: Jun 12 2023 12:27 PM
 C:\Users\mitchell\OneDrive\Projects\211-12423\01\Drawings\EROSION AND SEDIMENT CONTROL PLAN.dwg