

KEY PLAN NTS

LEGEND

- PROPOSED SANITARY SEWER AND MANHOLE
- PROPOSED STORM SEWER AND MANHOLE
- PROPOSED WATERMAIN PIPE
- PROPOSED SHUT OFF VALVE
- DETECTOR CHECK VALVE AND CHAMBER
- EXISTING SANITARY SEWER AND MANHOLE
- EXISTING STORM SEWER AND MANHOLE
- EXISTING WATERMAIN
- EXISTING GAS MAIN
- EXISTING BELL LINE
- PROPERTY LINE

ELEVATION NOTE:  
ELEVATION ARE REFERRED TO CANADIAN GEODETIC VERTICAL DATUM-1928, AND WERE DERIVED FROM THE CITY OF MISSISSAUGA BENCHMARK NO. 379, HAVING A PUBLISHED ELEVATION OF 82.771 METRES. ALL DIMENSIONS AND ELEVATIONS ARE IN METRES UNLESS OTHERWISE NOTED.

PIPE SIZES ARE IN MILLIMETRES.

No.	REVISIONS	BY	DATE	APPR
2	REISSUED FOR ZBA & OPA	M.M.	JUNE 12, 2023	
1	ISSUED FOR ZBA & OPA	A.K.	FEB. 04, 2022	

ALL PREVIOUS ISSUES OF THIS DRAWING ARE SUPERSEDED

CLIENT  
**EDENSHAW QUEEN DEVELOPMENTS LIMITED**

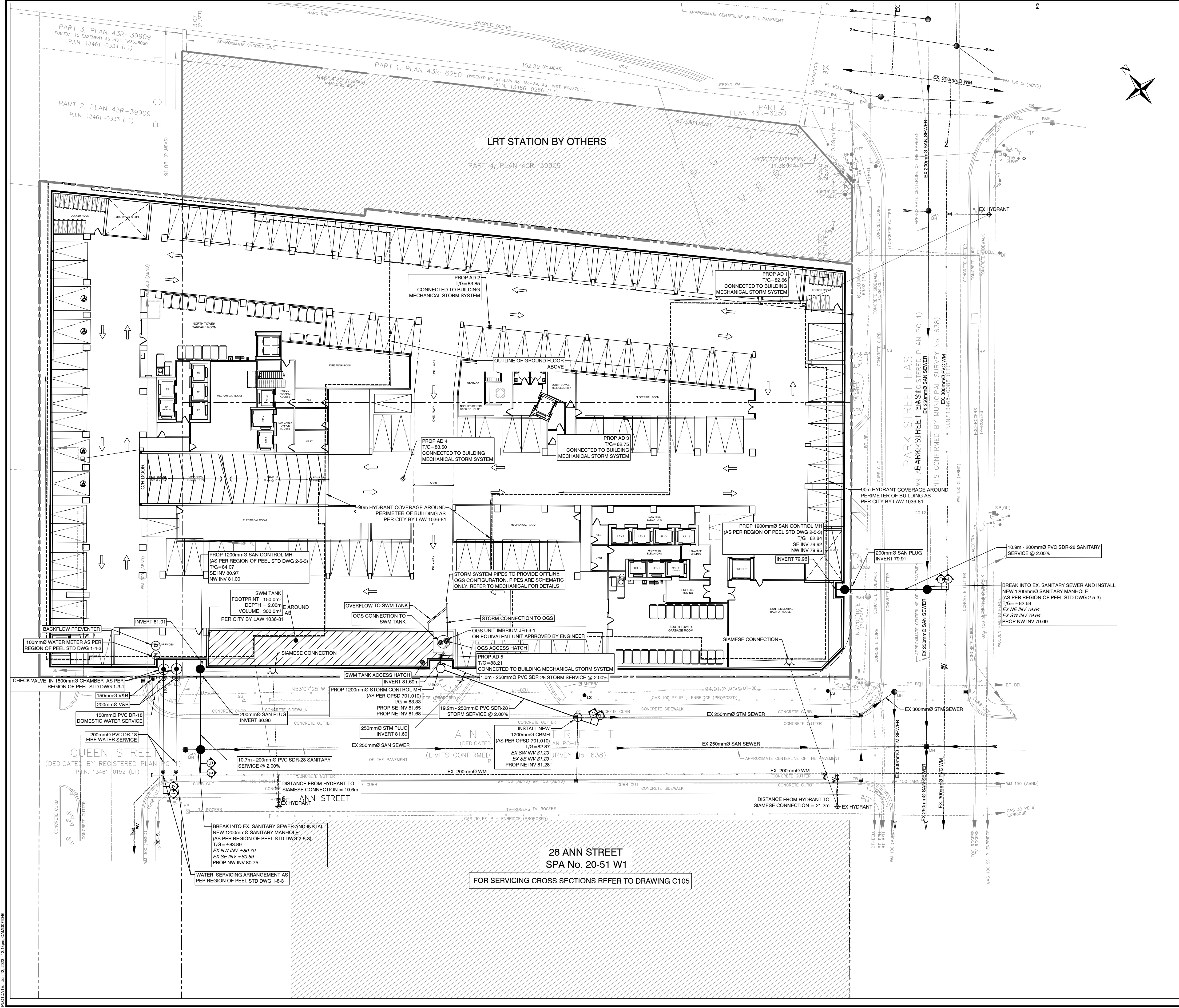


PROJECT TITLE  
**88 PARK STREET EAST**  
PORT CREDIT, ON

SHEET TITLE  
**SITE SERVICING PLAN**



DESIGNED M.D.	DRAWN M.D.	CHECKED M.M.
SCALE 1:250	DATE JUNE 2023	
PROJECT NUMBER 211-12423	DWG. NUMBER C104	



FILENAME: C:\Users\mitchell\OneDrive\Projects\211-12423\01-Queen\SiteServicing\Drawings\211-12423\_S5.dwg  
 C:\Users\mitchell\OneDrive\Projects\211-12423\01-Queen\SiteServicing\Drawings\211-12423\_S5.dwg  
 DATE: Jun 12 2023 12:28:58 PM  
 C:\Users\mitchell\OneDrive\Projects\211-12423\01-Queen\SiteServicing\Drawings\211-12423\_S5.dwg