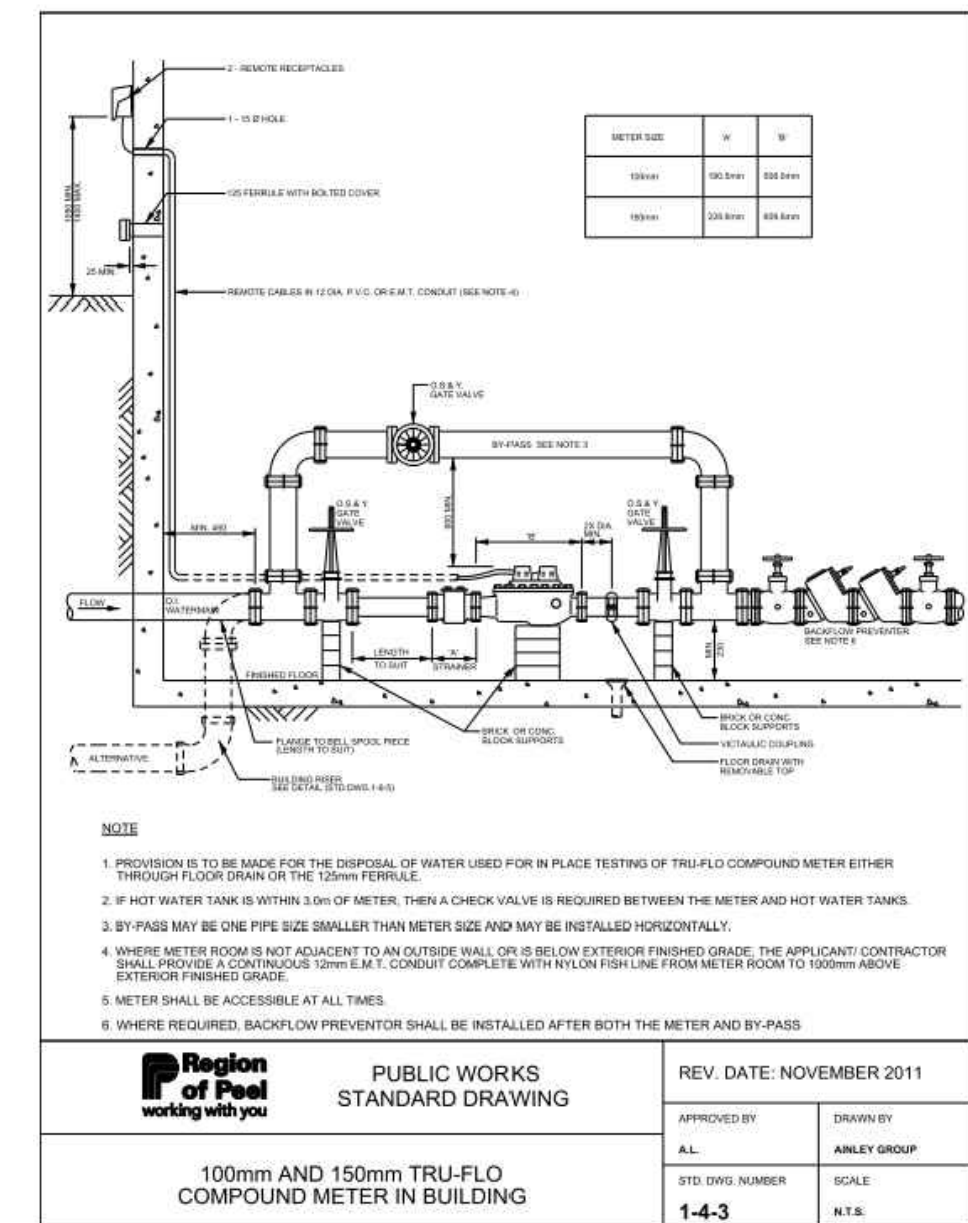
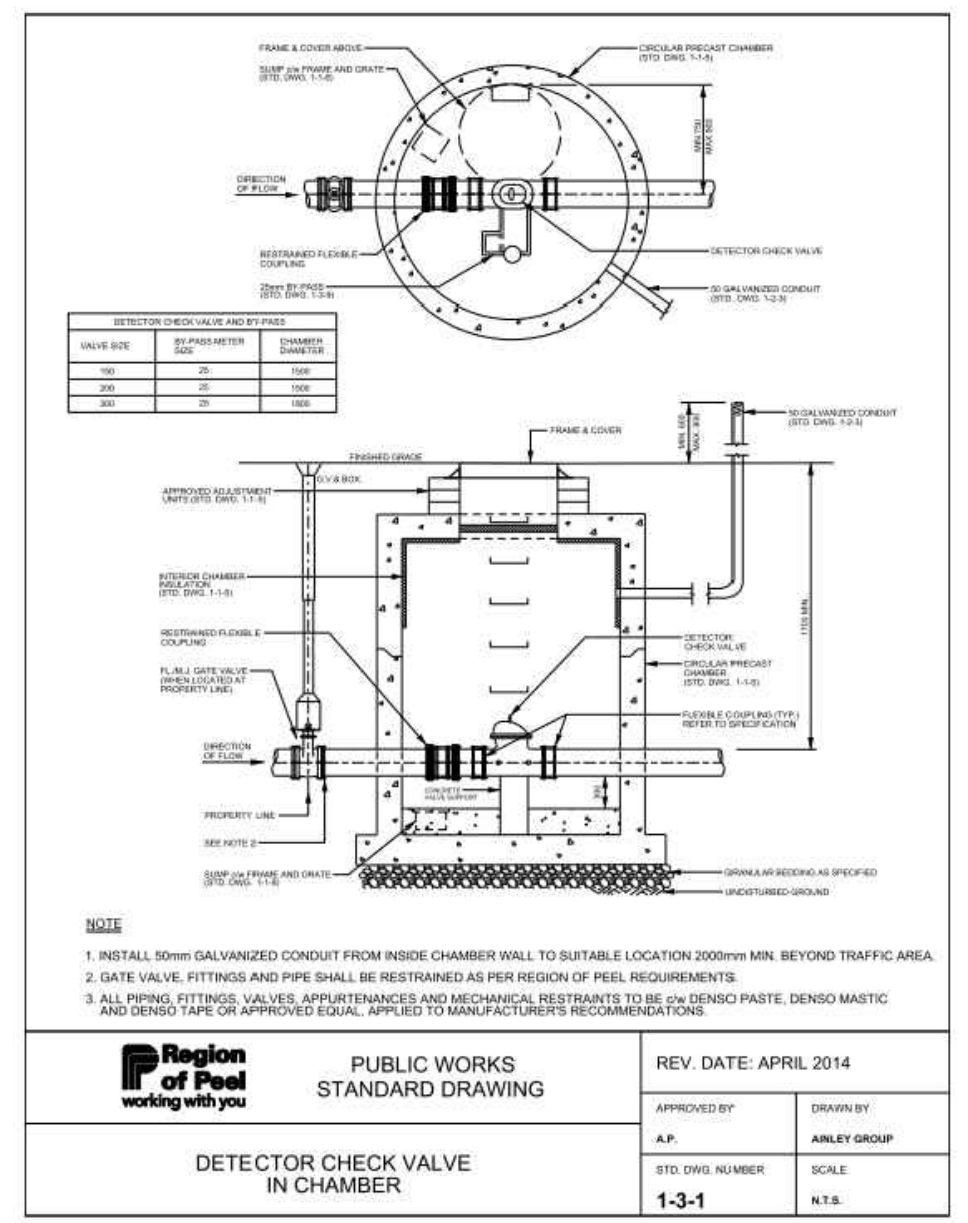
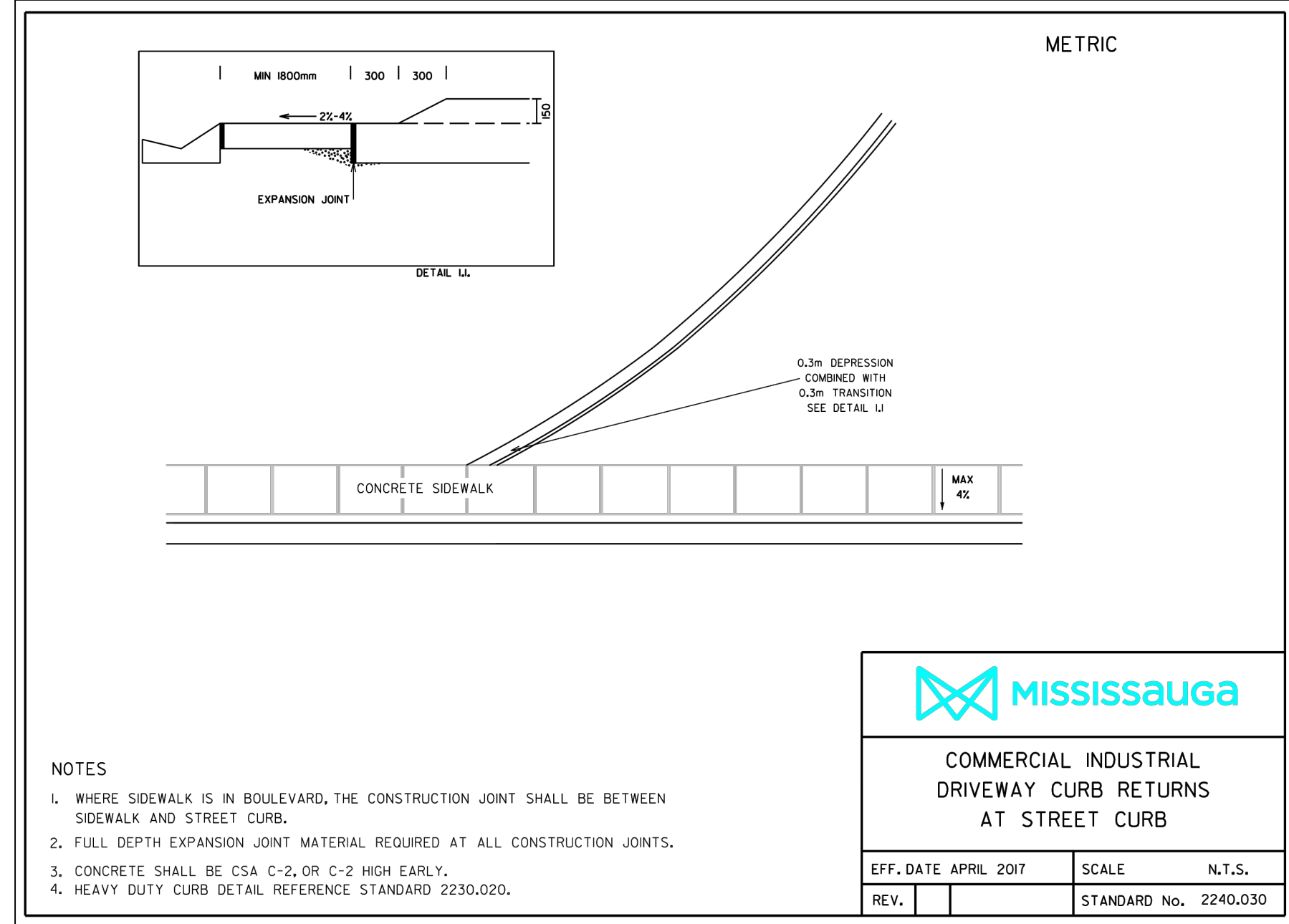
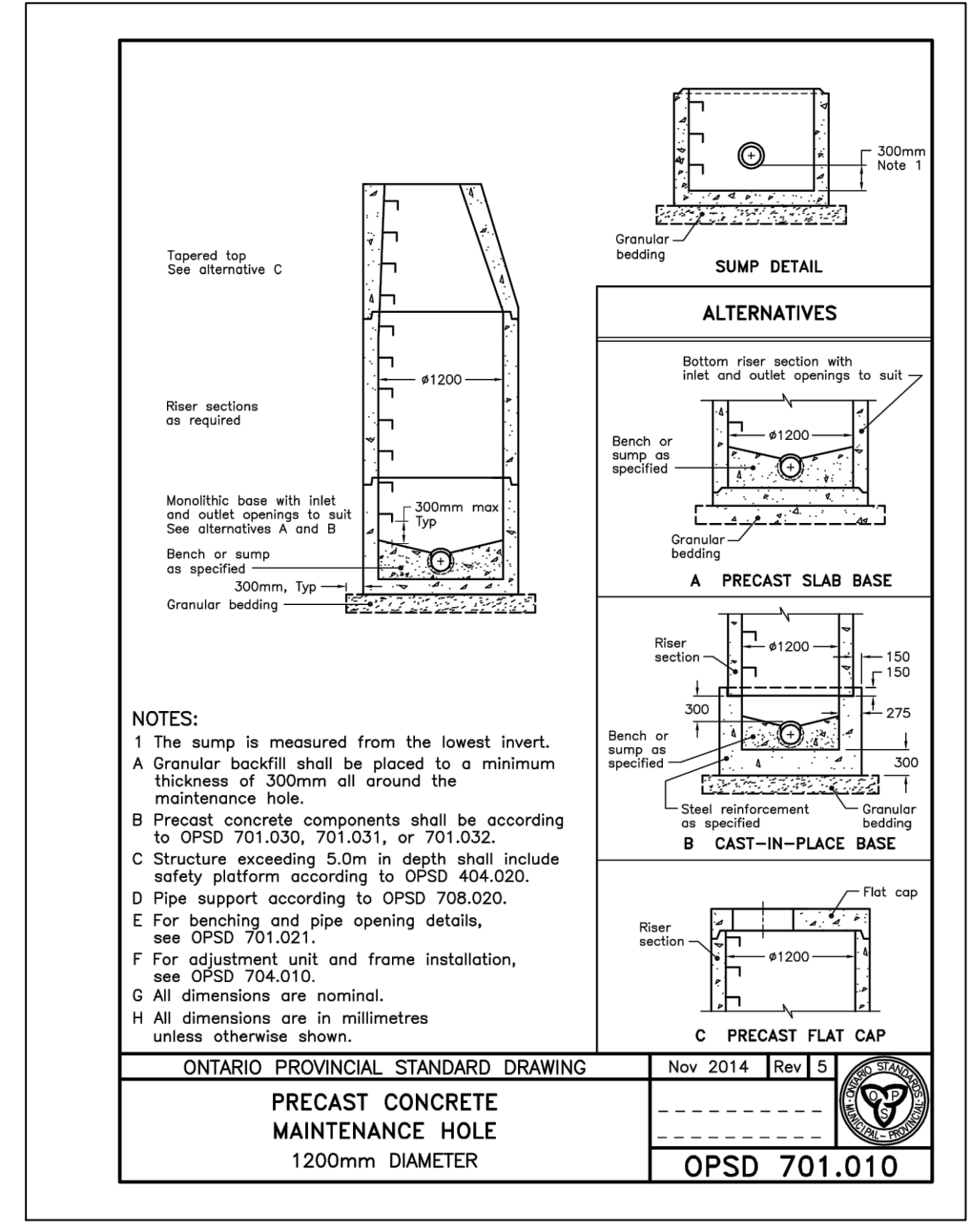
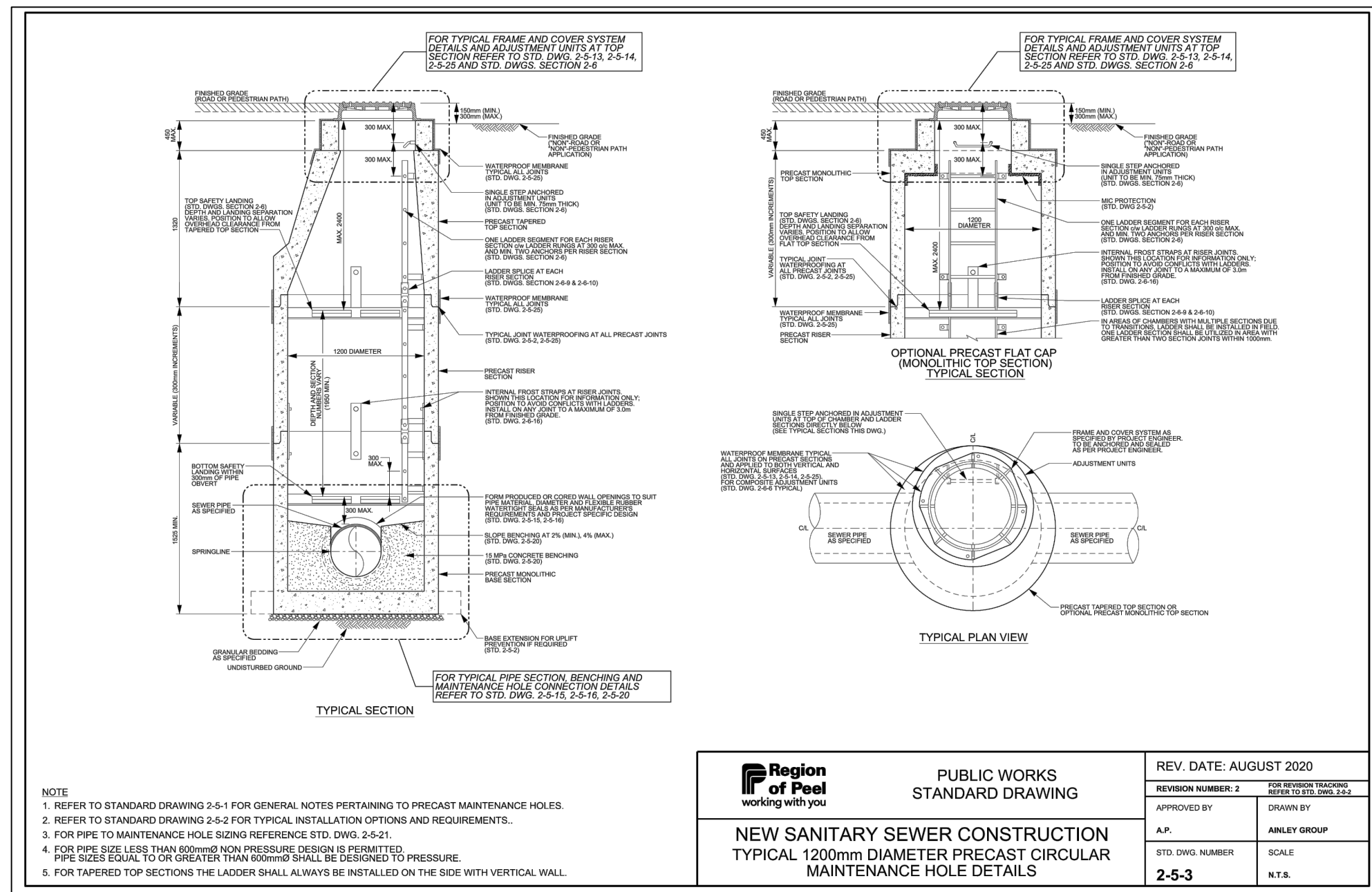


KEY PLAN

NTS



ELEVATION NOTE: ELEVATION ARE REFERRED TO CANADIAN GEODETIC VERTICAL DATUM-1928, AND WERE DERIVED FROM THE CITY OF MISSISSAUGA BENCHMARK NO. 379, HAVING A PUBLISHED ELEVATION OF 82.771 METRES. ALL DIMENSIONS AND ELEVATIONS ARE IN METRES UNLESS OTHERWISE NOTED. PIPE SIZES ARE IN MILLIMETRES.

No.	REVISIONS	BY	DATE	APPR.
2	REISSUED FOR ZBA & OPA	M.M.	JUNE 12, 2023	
1	ISSUED FOR ZBA & OPA	A.K.	FEB. 04, 2022	

ALL PREVIOUS ISSUES OF THIS DRAWING ARE SUPERSEDED

CLIENT

EDENSHAW QUEEN DEVELOPMENTS LIMITED

MUNICIPALITY

MISSISSAUGA Transportation and Works

PROJECT TITLE

88 PARK STREET EAST
PORT CREDIT, ON

SHEET TITLE

STANDARD DETAILS

CONSULTANT

wsp

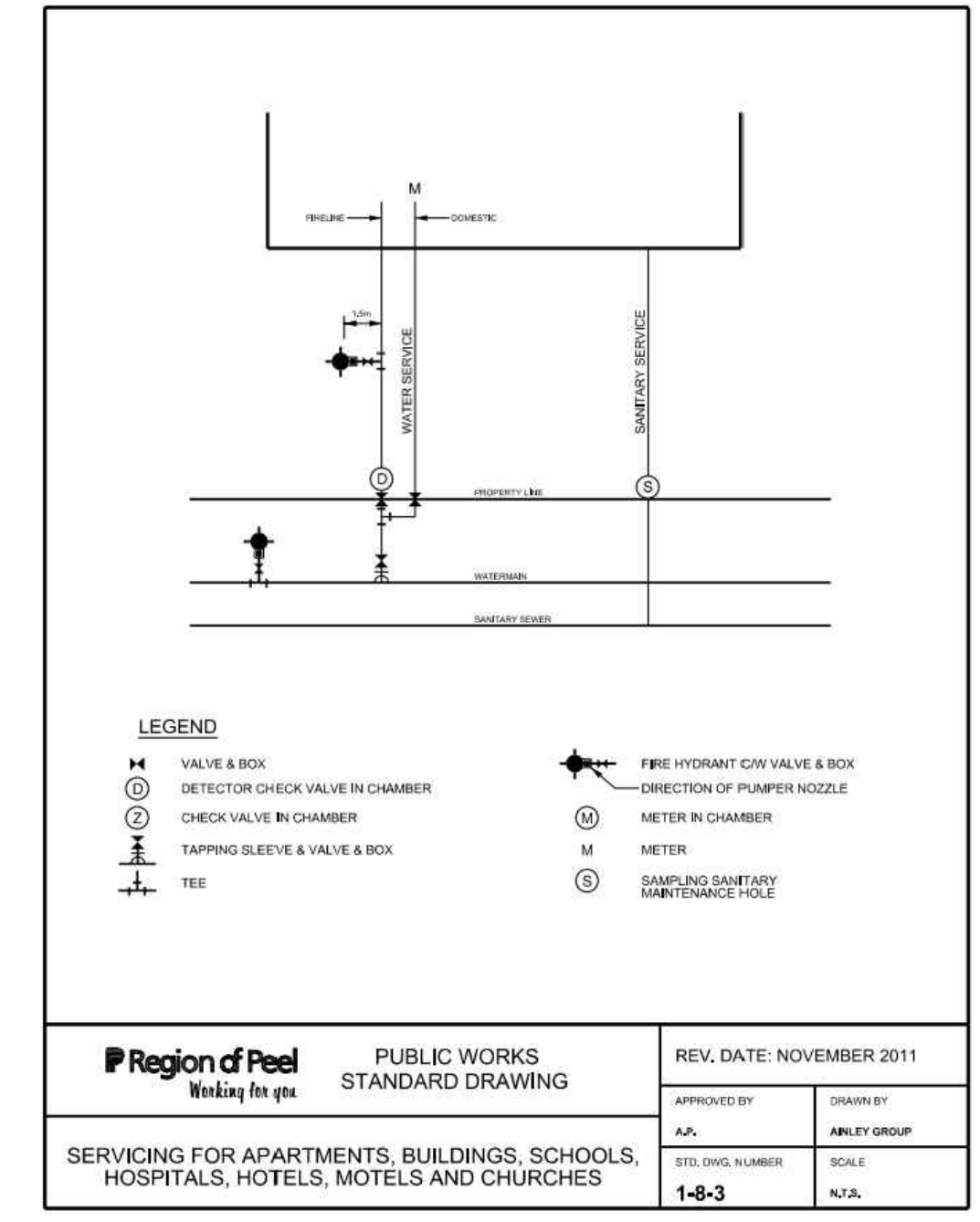
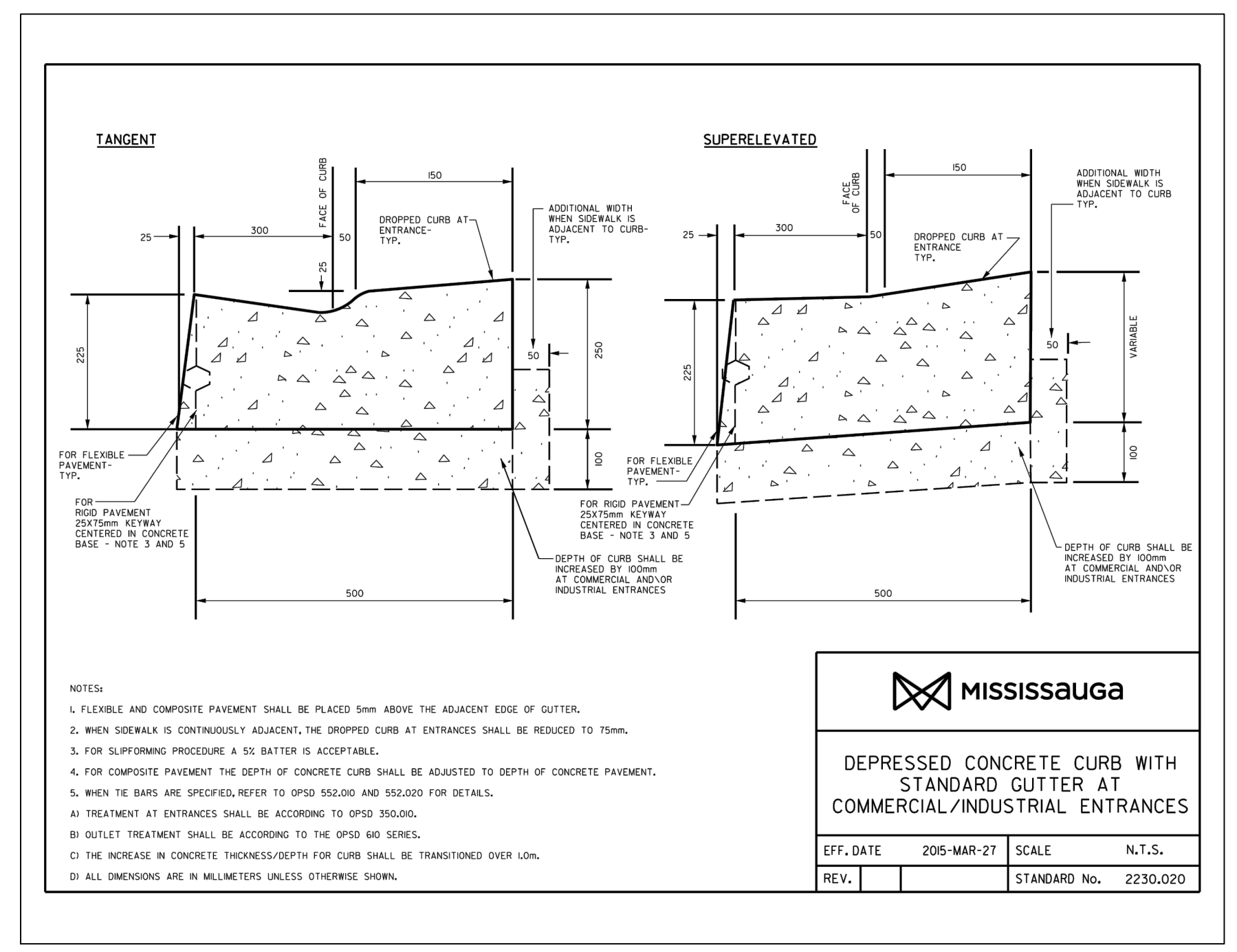
LICENSED PROFESSIONAL ENGINEER

M.T. MITCHELL
100218106
2023-06-12
PROVINCE OF ONTARIO

DESIGNED: M.D. DRAWN: M.D. CHECKED: M.M.

SCALE: N.T.S. DATE: JUNE 2023

PROJECT NUMBER: 211-12423 DWG. NUMBER: C101



FILENAME: C:\Users\am07646\OneDrive\Work\Projects\Mississauga\WSP\Canada\Projects\AMER\Land Development\Ontario\Peel\Engineering Drawings\211-12423_NT.dwg
PLOTDATE: Jun 12 2023 12:28pm C:\Users\am07646