

KEY PLAN NTS

LEGEND

- PROPOSED SANITARY SEWER AND MANHOLE
- PROPOSED STORM SEWER AND MANHOLE
- PROPOSED WATERMAIN PIPE
- ⊗ PROPOSED SHUT OFF VALVE
- ⊙ DETECTOR CHECK VALVE AND CHAMBER
- EXISTING SANITARY SEWER AND MANHOLE
- EXISTING STORM SEWER AND MANHOLE
- EXISTING WATERMAIN
- EXISTING GAS MAIN
- EXISTING BELL LINE
- PROPERTY LINE
- UNDERGROUND PARKING
- TREE PLANTING TRENCH

ELEVATION NOTE:  
ELEVATION ARE REFERRED TO CANADIAN GEODETIC VERTICAL DATUM-1928, AND WERE DERIVED FROM THE CITY OF MISSISSAUGA BENCHMARK NO. 379, HAVING A PUBLISHED ELEVATION OF 82.771 METRES. ALL DIMENSIONS AND ELEVATIONS ARE IN METRES UNLESS OTHERWISE NOTED.  
PIPE SIZES ARE IN MILLIMETRES.

No.	REVISIONS	BY	DATE	APPR
2	REISSUED FOR ZBA & OPA		M.M. JUNE 12, 2023	
1	ISSUED FOR ZBA & OPA	A.K.	FEB. 04, 2022	

ALL PREVIOUS ISSUES OF THIS DRAWING ARE SUPERSEDED

CLIENT  
**EDENSHAW QUEEN DEVELOPMENTS LIMITED**

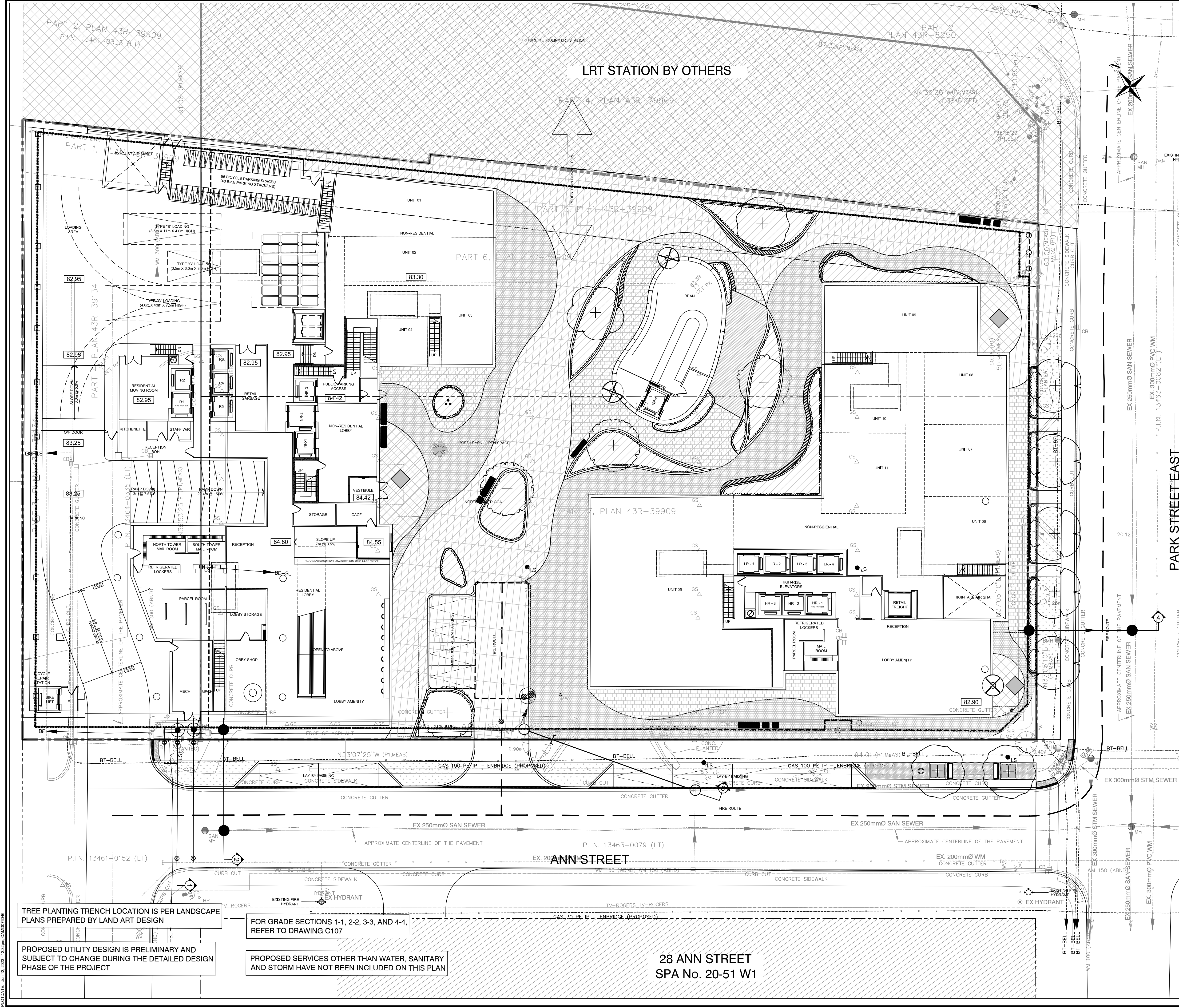


PROJECT TITLE  
**88 PARK STREET EAST  
PORT CREDIT, ON**

SHEET TITLE  
**STREETSCAPE FEASIBILITY STUDY**



DESIGNED M.D.	DRAWN M.D.	CHECKED M.M.
SCALE 1:200	DATE JUNE 2023	PROJECT NUMBER 211-12423
PROJECT NUMBER 211-12423		DWG. NUMBER C106



FILENAME: C:\Users\mitchell\OneDrive\WSP\Projects\211-12423\28 Ann Street\211-12423\_SF.dwg  
 PLOTDATE: Jun 12 2023 12:25pm CAM0070658

TREE PLANTING TRENCH LOCATION IS PER LANDSCAPE PLANS PREPARED BY LAND ART DESIGN

FOR GRADE SECTIONS 1-1, 2-2, 3-3, AND 4-4, REFER TO DRAWING C107

PROPOSED SERVICES OTHER THAN WATER, SANITARY AND STORM HAVE NOT BEEN INCLUDED ON THIS PLAN

28 ANN STREET  
SPA No. 20-51 W1