

KEY PLAN
1:10,000

LEGEND

- PROPERTY BOUNDARY
- EXISTING WOODLOT
- 10m WIDE NHS BUFFER
- ROAD WIDENING
- NATURAL FEATURE STAKE BY CVC AND CITY (AUGUST 3, 2018)
- TOP OF BANK STAKED BY CVC AND CITY (AUGUST 3, 2018)
- TOP OF BANK FROM R-PE TOPOGRAPHIC SURVEY
- LONG TERM STABLE SLOPE LINE BY DS CONSULTANTS (JULY 2023)
- DEVELOPMENT LIMIT
- EXISTING CONTOUR AND ELEVATION (m)
- EXISTING OVERLAND FLOW ROUTE
- PROPOSED HEAVY-DUTY SEDIMENT CONTROL FENCE (REFER TO DETAIL ON DWG 1001)
- PROPOSED SEDIMENT CONTROL FENCE (REFER TO DETAIL ON DWG 1001)
- PROPOSED CATCHBASIN SEDIMENT BARRIER (REFER TO DETAIL ON DWG. 1001)
- PROPOSED STONE PAD CONSTRUCTION ENTRANCE (REFER TO DETAIL ON DWG. 1001)

BENCHMARK:
ELEVATIONS ARE REFERRED TO CANADIAN GEODETIC VERTICAL DATUM-1928, AND WERE DERIVED FROM CITY OF MISSISSAUGA BENCHMARK No. 58, HAVING A PUBLISHED ELEVATION OF 108.283 METRES.

No.	REVISION	DATE	BY
3	THIRD SUBMISSION	MAY 24/24	J.S.
2	SECOND SUBMISSION	NOV. 11/23	J.S.
1	FIRST SUBMISSION	OCT. 2/23	J.S.



Urbantech Consulting
A Division of Leighton-Zec Ltd.
3760 14th Avenue, Suite 301,
Markham, ON, L3R 3T7
TEL 905.946.9461 • urbantech.com

1720 SHERWOOD FORREST CIRCLE
CONDOMINIUM DETACHED RESIDENTIAL BLOCK
SHERWOOD FORREST LIMITED PARTNERSHIP
4900 PALLADIUM WAY, UNIT 105
BURLINGTON, ON, L7M 0W7
(905)-336-5545

Region of Peel
Working for you

MISSISSAUGA

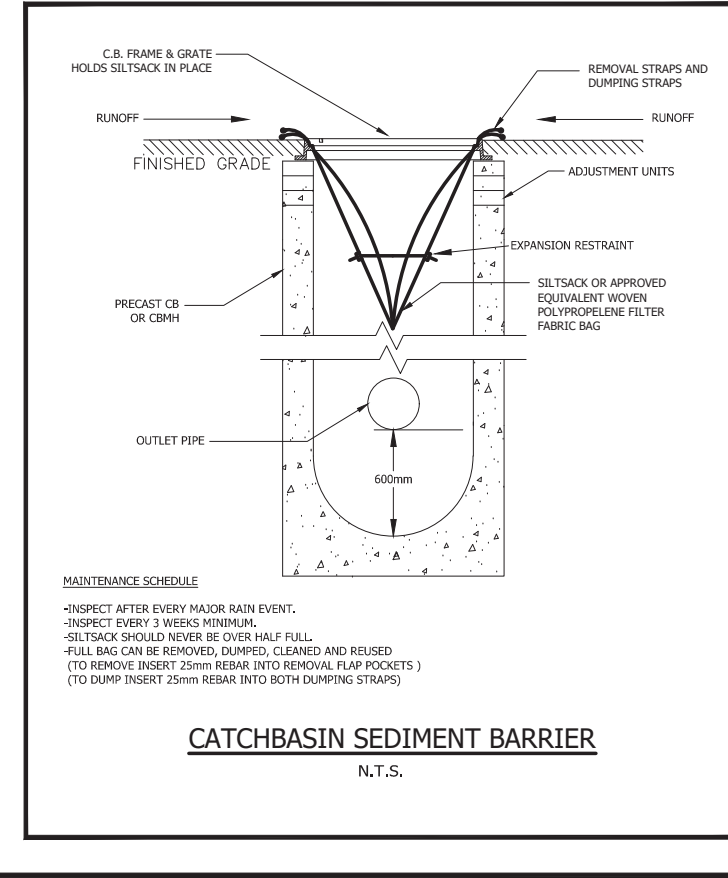
EROSION AND SEDIMENT CONTROL PLAN

PROJECT #:	23-747	DRAWING:	C401
SITE PLAN FILE No.:			
SUBDIVISION FILE No.:			
CITY FILE No.:			
REGION CONNECTION FILE No.:			
DESIGNED:	J.S.	CHECKED:	D.Z.
DRAWN:	J.S.	DATE:	AUGUST 2023
SCALE:	1:750		

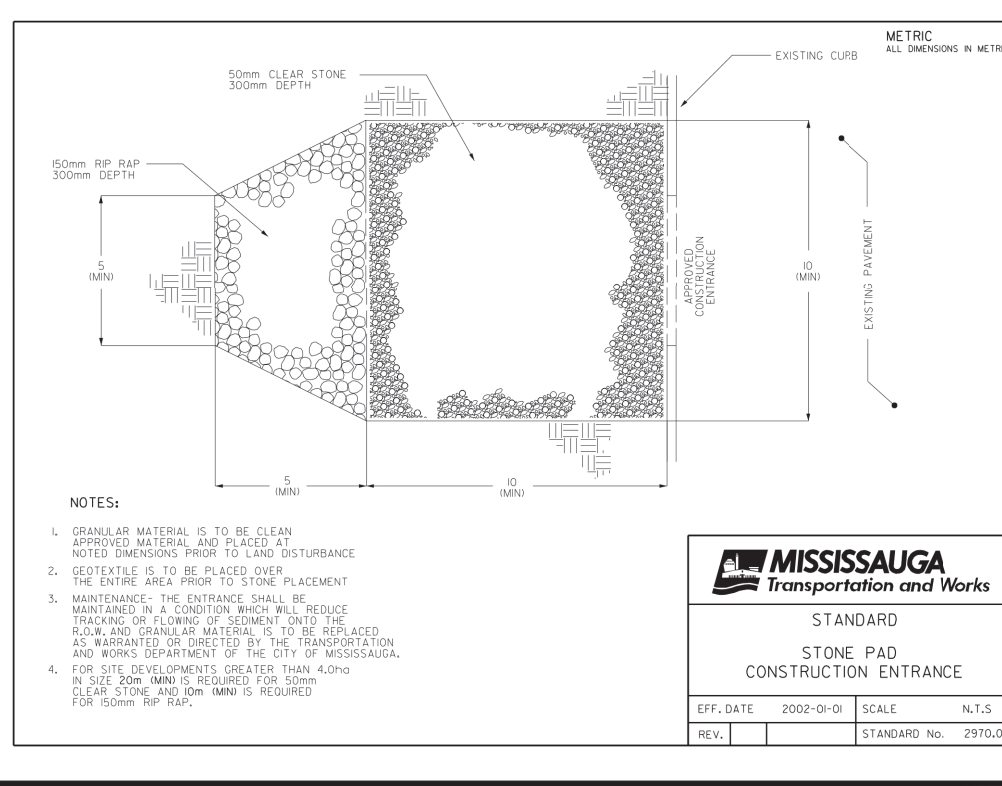
EROSION AND SEDIMENT CONTROL

- CONTRACTOR TO INSTALL EROSION CONTROL MEASURES AS SHOWN PRIOR TO CONSTRUCTION AND MAINTAIN IN GOOD CONDITION UNTIL CONSTRUCTION IS COMPLETED AND ALL DISTURBED GROUND SURFACES HAVE BEEN RESTABILIZED EITHER BY PLANTING OR RESTORATION OF VEGETATIVE COVER.
- ALL SILT FENCING TO BE INSTALLED PRIOR TO ANY GRAVING, EXCAVATING OR DEMOLITION COMMENCING.
- EROSION CONTROL FENCING TO BE INSTALLED AROUND BASE OF ALL LONG TERM STOCKPILES. ALL STOCKPILES TO BE KEPT OUTSIDE OF THE SIGNIFICANT WOODLAND CRIPLINE AND THE 10m WIDE NATURAL HERITAGE SYSTEM (NHS) BUFFER.
- EROSION PROTECTION TO BE PROVIDED AROUND ALL STORM CISTS.
- ADDITIONAL EROSION CONTROL MEASURES MAY BE REQUIRED AS SITE DEVELOPMENT PROGRESSES. CONTRACTOR TO PROVIDE ALL ADDITIONAL EROSION CONTROL STRUCTURES.
- EROSION CONTROL STRUCTURES TO REMAIN IN PLACE UNTIL ALL DISTURBED GROUND SURFACES HAVE BEEN RESTABILIZED.
- NO ALTERNATE METHODS OF EROSION PROTECTION SHALL BE PERMITTED UNLESS APPROVED BY THE ENGINEER AND THE CITY.
- CONTRACTOR TO CLEAN ROADWAY AND SIDEWALKS OF SEDIMENTS RESULTING FROM CONSTRUCTION TRAFFIC FROM THE SITE EACH DAY.
- CONTRACTOR MUST REMOVE EROSION AND SEDIMENTATION FENCING PRIOR TO COMPLETION OF PROJECT. CONTRACTOR TO HAVE EROSION AND SEDIMENTATION FENCE INSPECTED WHEN VEGETATION HAS ESTABLISHED, BUT PRIOR TO FENCE REMOVAL. OVERGROWING ENGINEER'S REPRESENTATIVE TO DETERMINE IF VEGETATION HAS REACHED THE CRITICAL POINT AND WILL THEN INSTRUCT CONTRACTOR TO REMOVE FENCE.
- CONTRACTOR SHALL ALSO BE RESPONSIBLE TO CONTROL DUST IN THE PROJECT AND SHALL PROVIDE, AT HIS OWN EXPENSE, CONTROLLING MEASURES AS DIRECTED BY THE ENGINEER AND THE CITY.
- SHOULD EXCESSIVE MUD TRACKING BE NOTED ON THE CITY/REGION ROADS, IT MAY BE DIRECTED BY THE CITY/REGION ENGINEER TO INSTALL A WHEEL WASHING DEVICE WHICH WILL BE THE RESPONSIBILITY OF THE CONTRACTOR.
- ALL SEDIMENT CONTROLS MUST BE MONITORED ON A WEEKLY BASIS BY THE THIRD PARTY AND A REPORT WILL BE SUBMITTED TO CVC, MRFP AND THE CITY OF MISSISSAUGA. DURING OR IMMEDIATELY AFTER A SIGNIFICANT RAINFALL EVENT AN INSPECTION MUST BE DONE AND THE RESULTS REPORT SHOULD BE SUBMITTED FOR REVIEW. IF EXCESS SEDIMENT LOAD IS NOTED, THE SEDIMENT EROSION CONTROL PLAN SHOULD BE ADJUSTED TO CONTROL EXCESS SEDIMENT TO THE EXTENT FEASIBLE AS SOON AS POSSIBLE. MODIFICATIONS & MAINTENANCE MAY BE REQUIRED AS SITE CONDITIONS WARRANT. THE CVC AND CITY OF MISSISSAUGA APPROVAL IS REQUIRED PRIOR TO MODIFICATIONS.
- ALL EXTERNAL AREAS DISTURBED DUE TO CONSTRUCTION SHALL BE RESTORED TO THEIR ORIGINAL CONDITION OR BETTER TO THE SATISFACTION OF THE CITY OF MISSISSAUGA OR REGION OF PEEL.
- REMOVE SEDIMENT AND CONTAMINANTS ANNUALLY AND REINSTATE STORM WATER MANAGEMENT FACILITY ACCORDING TO THE DESIGN OUTLINES ON THIS PLAN.
- EROSION CONTROL STRUCTURES TO BE MONITORED REGULARLY AND ANY DAMAGE REPAIRED IMMEDIATELY. SEDIMENTS TO BE REMOVED WHEN ACCUMULATIONS REACH A MAXIMUM OF 1/3 THE HEIGHT OF THE FENCE. ALL REMOVED SEDIMENTS ARE TO BE DISPOSED OF OFF-SITE AT APPROPRIATE FACILITIES.
- OWNER'S REPRESENTATIVE TO MONITOR EROSION CONTROL STRUCTURES TO ENSURE FENCING IS INSTALLED AND MAINTENANCE IS PERFORMED TO CITY REQUIREMENTS.

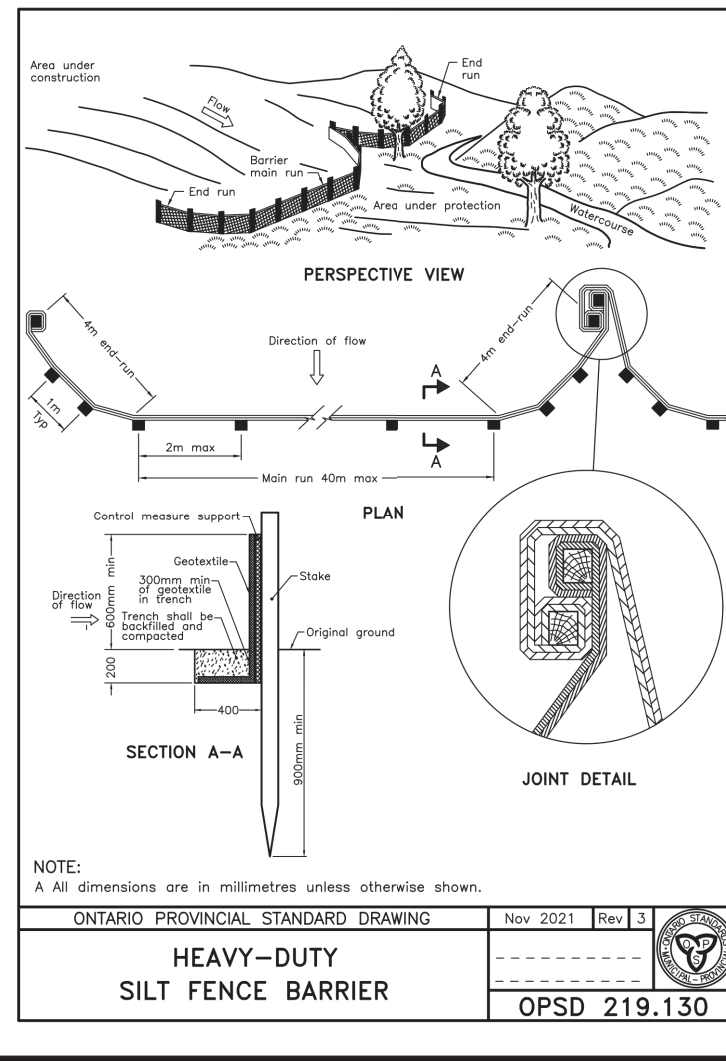
MAINTENANCE RECOMMENDATIONS



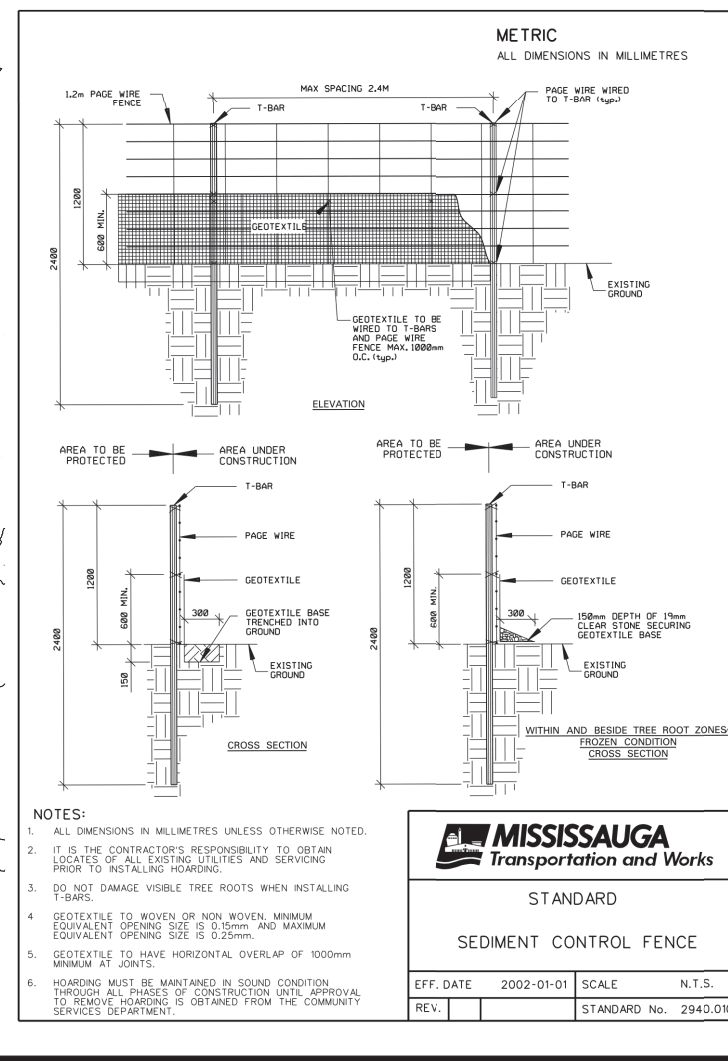
CATCHBASIN SEDIMENT BARRIER
N.T.S.



HEAVY-DUTY SILT FENCE BARRIER
N.T.S.



HEAVY-DUTY SILT FENCE BARRIER
N.T.S.



SEDIMENT CONTROL FENCE
STANDARD