

TREE PRESERVATION SPECIFICATIONS

TREE PROTECTION AND FENCING

- ALL EXISTING TREES, THAT ARE DESIGNATED TO REMAIN, MUST BE FULLY PROTECTED WITH TREE PROTECTION FENCING IN ACCORDANCE WITH CITY OF MISSISSAUGA DETAIL 02830-6, WHICH IS TO BE ERECTED BEYOND THE TREE PROTECTION ZONE.
- TREE PROTECTION ZONES ARE TO INCLUDE SIGNAGE (AS PER BELOW) AT REGULAR INTERVALS ON THE FENCING. THE SIGNS ARE TO BE 40.64 CM X 60.96 CM AND ON A WATERPROOF MATERIAL.

MISSISSAUGA

Tree Protection Zone (TPZ)

BY-LAW #

No construction activities, including grade changes, storage of materials or equipment, dumping, excavation is permitted within this TPZ

This tree protection barrier must remain in good condition and must not be removed or altered without the authorization of City of Mississauga, Urban Forestry.

Concerns or inquires regarding this TPZ can be directed to:

(3-1-1) Dial 3-1-1 905-615-4311 outside city limits

- NO CONSTRUCTION EQUIPMENT OR MOTORIZED VEHICLES ARE PERMITTED WITHIN THE TREE PROTECTION ZONE AND ALL TREE PROTECTION ZONES MUST REMAIN UNDISTURBED AT ALL TIMES. THE FOLLOWING ACTIVITIES ARE ALSO PROHIBITED WITHIN THE TREE PROTECTION ZONES:
 - CONSTRUCTION ACTIVITIES;
 - STORAGE OF MATERIALS
 - STORAGE OF EQUIPMENT
 - EXCAVATION (UNLESS APPROVED FOR ROOT PRUNING)
 - GRADE CHANGES
 - CUTTING, TEARING, BREAKING TREE'S ROOTS, BRANCHES AN TRUNK
 - DUMPING
 - PARKING
 - STRINGING CABLES/WIRES

- TREE PROTECTION FENCING IS TO BE INSPECTED REGULARLY TO ENSURE IT IS PERFORMING ITS INTENDED FUNCTION. IF ANY SECTION IS FOUND TO BE DAMAGED OR NON-FUNCTIONAL, IT SHOULD BE REPLACED IMMEDIATELY.
- TREE PROTECTION FENCING MUST REMAIN IN EFFECTIVE CONDITION UNTIL ALL SITE ACTIVITIES INCLUDING LANDSCAPING ARE COMPLETE. IT MUST NOT BE REMOVED WITHOUT THE WRITTEN AUTHORIZATION OF THE CONSULTING LANDSCAPE ARCHITECT OR ARBORIST.

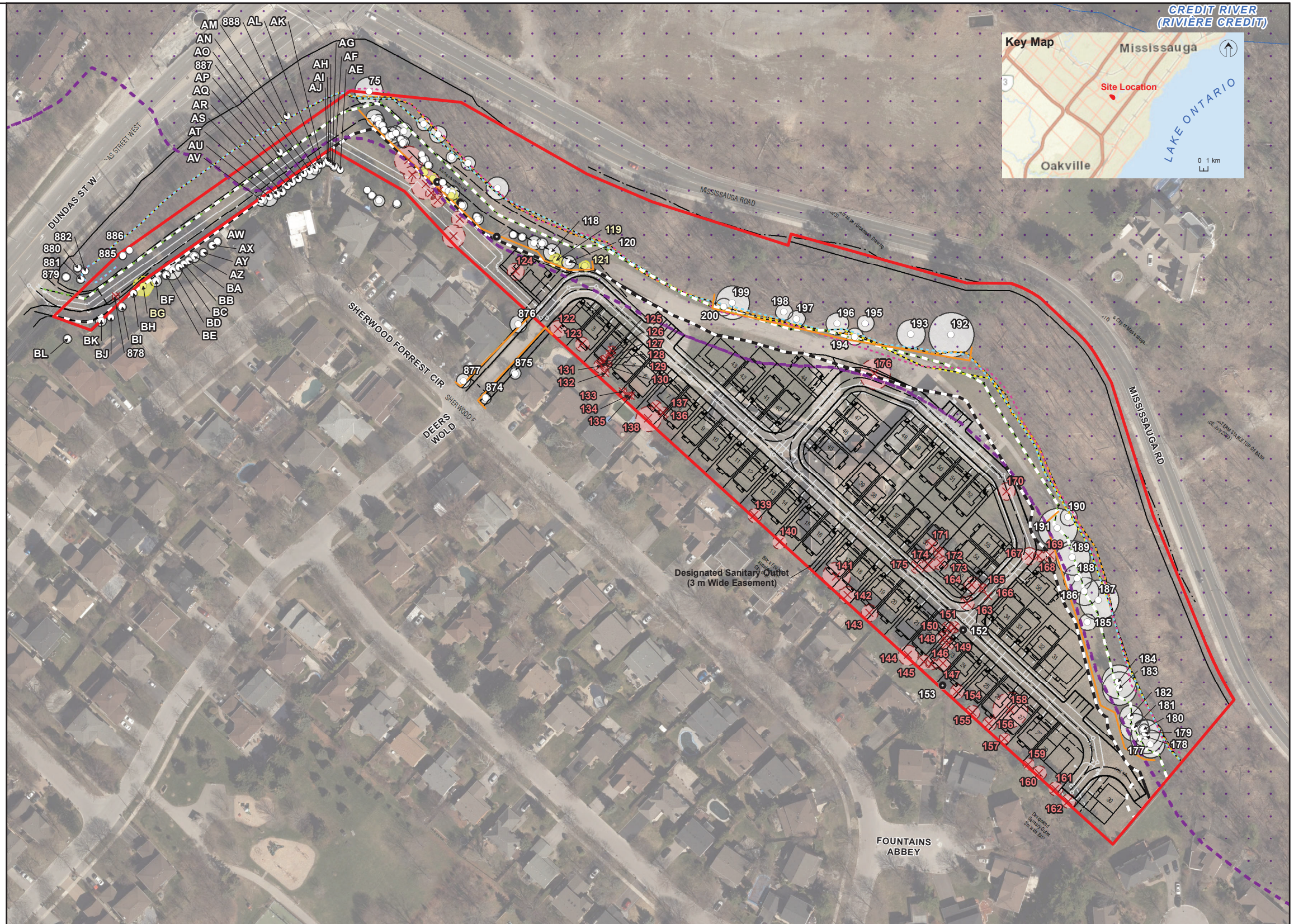
TREE AND ROOT PRUNING

- PRIOR TO THE COMMENCEMENT OF CONSTRUCTION, PRUNE LIMBS THAT MAY BE NEGATIVELY IMPACTED DURING CONSTRUCTION UTILIZING PRUNING SHEARS, PRUNING SAW, OR CHAIN SAW. PRUNE CLEANLY THE ROOTS OF EXISTING TREES THAT ARE ANTICIPATED TO BE DISTURBED BY EXCAVATION. PRUNING SHOULD BE CARRIED OUT AS SPECIFIED BY AN ISA CERTIFIED ARBORIST.
- WHERE DIRECTED BY THE CITY'S ARBORIST, THE CONTRACTOR SHALL MAKE ALL DAMAGE CAUSE TO THE AREAS SURROUNDING PLANT MATERIAL, INCLUDING REPLACING DAMAGED OR DESTROYED PLANT MATERIALS, TO THE SATISFACTION OF THE CITY'S ARBORIST.
- DO NOT STOCKPILE MATERIAL WITHIN THE DRIP LINE OF TREES OR SHRUBS TO BE RETAINED.
- DO NOT ALLOW TRAFFIC, VEHICLES OR EQUIPMENT TO COMPACT SOIL WITHIN THE DRIP LINE OF TREES OR SHRUBS TO BE RETAINED.
- AVOID ANY DAMAGE TO OAK TREES BETWEEN APRIL 1 - OCTOBER 31 TO AVOID THE POTENTIAL SPREAD OF OAK WILT, WHICH HAS RECENTLY BEEN DETECTED IN SOUTHERN ONTARIO. THIS TIMING WINDOW IS FROM THE CANADIAN FOOD INSPECTION AGENCY (CFIA). THE HIRED CONTRACTOR PERFORMING THE REMOVALS SHOULD BE FAMILIAR WITH TREE DISEASES, INCLUDING OAK WILT, AND REPORT ANY SUSPICIOUS TREES TO THE CFIA AND COMMUNITY SERVICES/FORESTRY.

TREE REMOVAL:

TO AVOID INTERFERENCE WITH THE EGGS, NESTS OR YOUNG OF BIRDS PROTECTED UNDER THE FEDERAL MIGRATORY BIRDS CONVENTION ACT (GOVERNMENT OF CANADA, 1994), REMOVALS SHOULD NOT OCCUR FROM APRIL 1 TO AUGUST 31 OF ANY GIVEN YEAR. SHOULD REMOVAL BE REQUIRED WITHIN THE APRIL 1 TO AUGUST 31 NESTING PERIOD, A QUALIFIED AVIAN BIOLOGIST SHOULD CONDUCT A THOROUGH SURVEY IMMEDIATELY PRIOR TO THE DESIRED TREE REMOVAL TO CONFIRM PRESENCE OR ABSENCE OF PROTECTED SPECIES. REMOVAL CANNOT OCCUR WITHOUT A PERMIT FROM THE CANADIAN WILDLIFE SERVICE.

TO AVOID POTENTIAL NEGATIVE IMPACTS TO SAR BATS, AVOID TREE REMOVALS BETWEEN APRIL 1 TO SEPTEMBER 30 OF ANY GIVEN YEAR.



LEGEND

Inventory Tree with TPZ to Retain	Regulated Area ²	Top of Bank (Staked by CVC and the city of Mississauga, Aug 3, 2018)
Inventory Tree with TPZ at Risk to Potential Injury	Woodland and Slope Setback (10 m) - displayed as white dash	Top of Bank (R-PE Surveying, May 18, 2023)
Inventory Tree with TPZ to Remove	Study Area	Natural Feature (Staked by CVC and City of Mississauga, Aug 3, 2018)
Dead	Long Term Stable Top of Bank (Tarasick, Sept 05, 2018)	New Development Limit (Based on LTSTOS from Tarasick)
Tree Protection Fencing	Long Term Stable Top of Bank (Terraprobe, Nov 23, 2017)	
Waterbody ¹		

0 10 20 30 40 50
METRE SCALE

North American Datum 1983
Universal Transverse Mercator Projection Zone 17

Scale: 1:1,800
Page Size: Tabloid (11 x 17 inches)

Drawn: SM
Checked: CH
Date: May 17, 2024

Source Notes:
1 - Land Information Ontario (LIO)
2 - Credit Valley Conservation (CVC)

NORTH

CLIENT	Argo Development Group
PROJECT	Sherwood Forrest Circle
TITLE	Tree Preservation Plan
REF. NO.	2100803-2-8
Palmer PART OF SLR	
Figure 2	