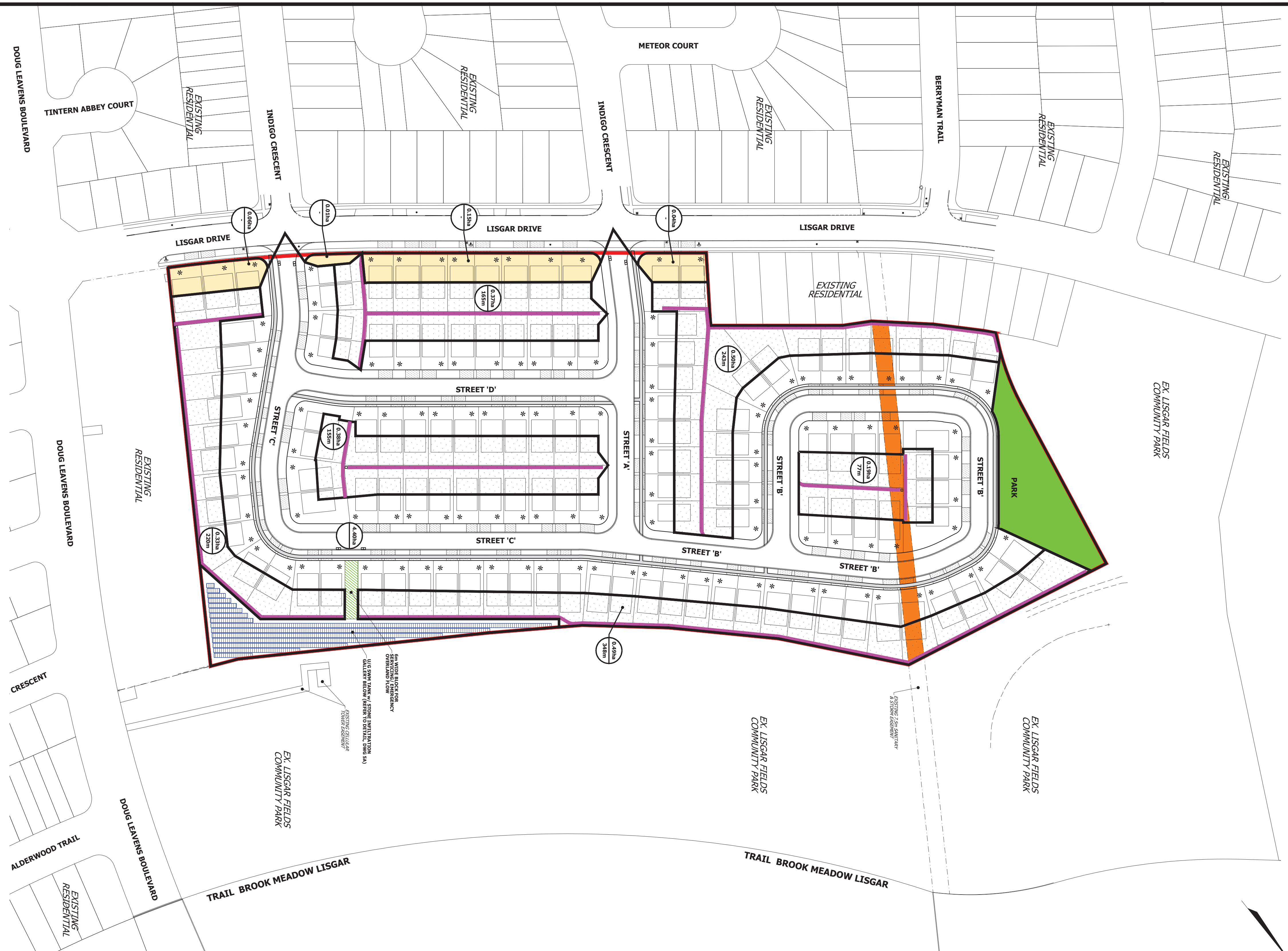


- LEGEND:**
- DRAFT PLAN LIMITS
 - REAR YARD INFILTRATION TRENCH
 - DRAINAGE TOWARDS LISGAR DRIVE TO BE CONTROLLED BY LOT-LEVEL LID
 - PROPOSED PARK / PREVIOUS AREA
 - REAR YARD TRENCH DRAINAGE AREA BOUNDARY
 - LOT EQUIPPED WITH FRONT YARD INFILTRATION GALLERY / SOAKAWAY PIT
 - DRAINAGE AREA (HECTARES)
 - LID LENGTH (WHERE APPLICABLE)
 - EXISTING SERVICING EASEMENT (TO BE ABANDONED)



POTENTIAL LIDS	
LINEAR LIDS	LENGTH (m)
Rear-Yard Trenches	1186
Front-Yard Soakaway Pits	182

BENCHMARK NOTE
 ELEVATIONS SHOWN ON THIS PLAN ARE RELATED TO GEODETIC DATUM AND ARE DERIVED FROM THE CITY OF MISSISSAUGA CONTROL MONUMENTS:
 AND ARE DERIVED FROM THE CITY OF MISSISSAUGA CONTROL MONUMENTS:
 NO. 075033003, ELEVATION=153.381m
 NO. 075033004, ELEVATION=152.055m
 NO. 075033005, ELEVATION=152.928m
 NO. 075033006, ELEVATION=152.928m

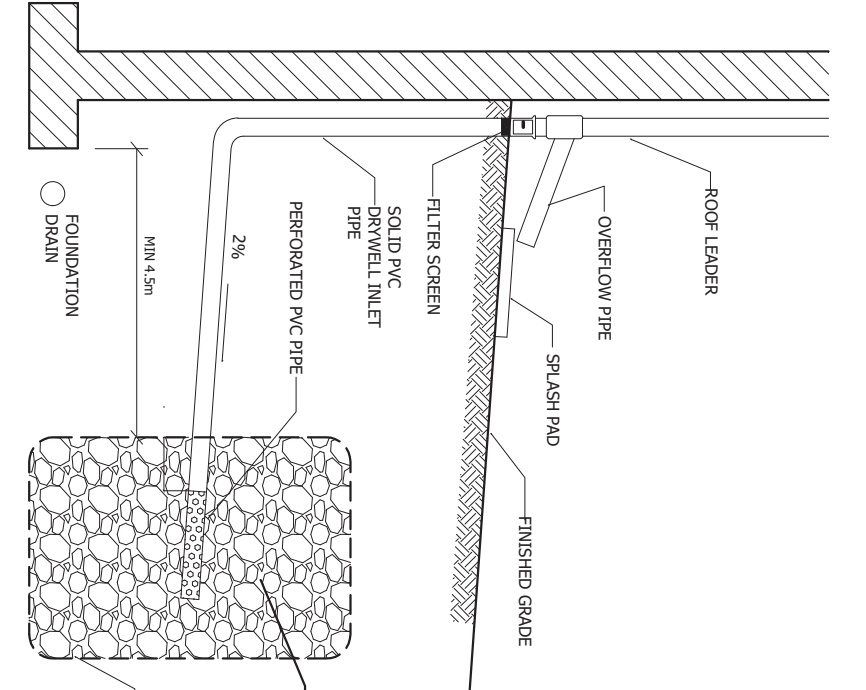
No.	DATE	BY
1	MAR. 2024	S.R.
2	OCT. 2023	S.R.
3	MAR. 2024	S.R.
4	OCT. 2023	S.R.
5	MAR. 2024	S.R.
6	OCT. 2023	S.R.
7	MAR. 2024	S.R.
8	OCT. 2023	S.R.
9	MAR. 2024	S.R.
10	OCT. 2023	S.R.

URBANTECH® Consulting
 A Division of leghorn-zec Ltd.
 3750 4th Avenue, Suite 501,
 Markham, ON, L3R 3T7
 TEL: 905.946.9461 • urbantech.com

AVENIA CONSTRUCTION INC.

PROPOSED LID PLAN

PROJECT NO.	DATE	SCALE	FIG. NO.
23-748	OCT. 2023	1:1000	5B



- NOTES**
- BASE OF SUBSURFACE INFILTRATION STRUCTURE TO BE AT OR BELOW FOUNDATION DRAIN ELEVATION, BUT NOT MORE THAN 1.0M BELOW FINISH GRADE OF THE HOUSE FOUNDATION.
 - FILTER FABRIC TO BE TERRAFLEX 201R OR APPROVED EQUAL.
 - THE EXCAVATION FOR THE BASEMENT BY A MINIMUM 4.5M DEEP AND IN THE BACKYARD UNITS TO BE DIRECTED TO THE INFILTRATION TRENCH.

