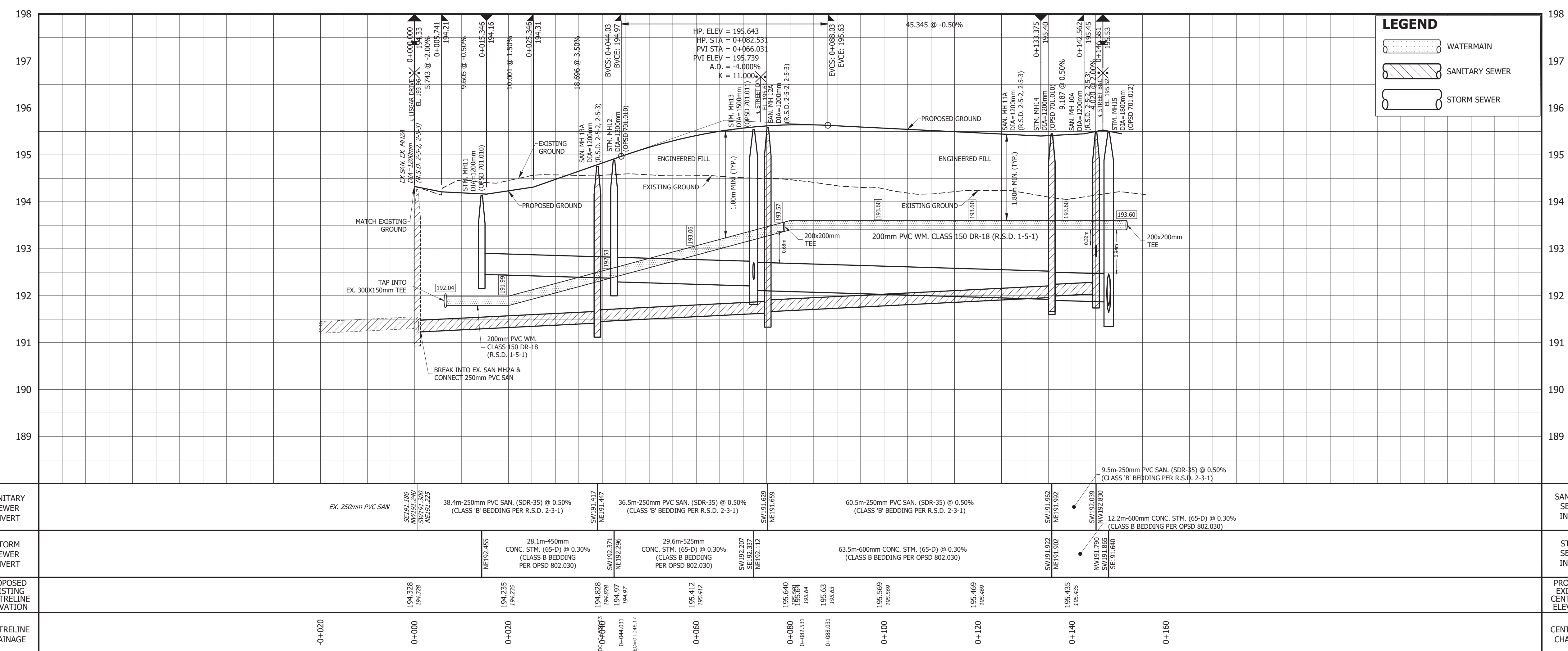


- LEGEND**
- DRAFT PLAN LIMITS
 - SANITARY SEWER AND MANHOLE
 - STORM SEWER AND MANHOLE
 - EXISTING SANITARY SEWER AND MANHOLE
 - EXISTING STORM SEWER AND MANHOLE
 - EXISTING FDC SEWER AND MANHOLE
 - PROPOSED WATERMAIN
 - EXISTING WATERMAIN
 - REAR-LOT CATCHBASIN/ CATCHBASIN
 - HYDRANT & VALVE
 - EXISTING SERVICING EASEMENT (TO BE ABANDONED & LIFTED)
 - PROPOSED PARK / PERVIOUS AREA



NOTE

- DIMENSIONS ON THIS PLAN ARE MEASURED TO FACE OF THE CURB. FOR EDGE OF PAVEMENT DIMENSIONS PLEASE REFER TO CROSS SECTIONS ON DWG. 8

BENCHMARK NOTE

ELEVATIONS SHOWN ON THIS PLAN ARE RELATED TO GEOCIDIC DATUM AND ARE DERIVED FROM THE CITY OF MISSISSAUGA CONTROL MONUMENTS:
 No. 075033003, ELEVATION=193.381m
 No. 075033004, ELEVATION=193.755m
 No. 075033009, ELEVATION=196.906m

No.	REVISION	DATE	BY	APPD
4				
3				
2	DARC RESUBMISSION	MAR. 2024	Y.P.	S.R.
1	1st FSR SUBMISSION	OCT. 2023	Y.P.	S.R.

AVENIA CONSTRUCTION INC.

Region of Peel
working with you

MISSISSAUGA

CITY FILE No. _____ REGION FILE No. _____

URBANTECH[®] Consulting
 A Division of Leighton-Zec Ltd.
 3760 14th Avenue, Suite 301,
 Markham, ON L3R 3T7
 TEL. 905.946.9461 • urbantech.com

LICENSED PROFESSIONAL ENGINEER
 S.B. RIEMER
 100214712
 OCT. 13, 2022
 PROVINCE OF ONTARIO

PLAN & PROFILE
STREET A
 (STA. 0+000 TO STA. 0+150)

DESIGNED:	Y.P.	CHECKED:	S.R.	PROJECT No.:	23-748
DRAWN:	Y.P.	DATE:	OCTOBER 2023	SHEET No.:	
SCALE:	H 1:500 V 1:50			DRAWING No.:	PP-1