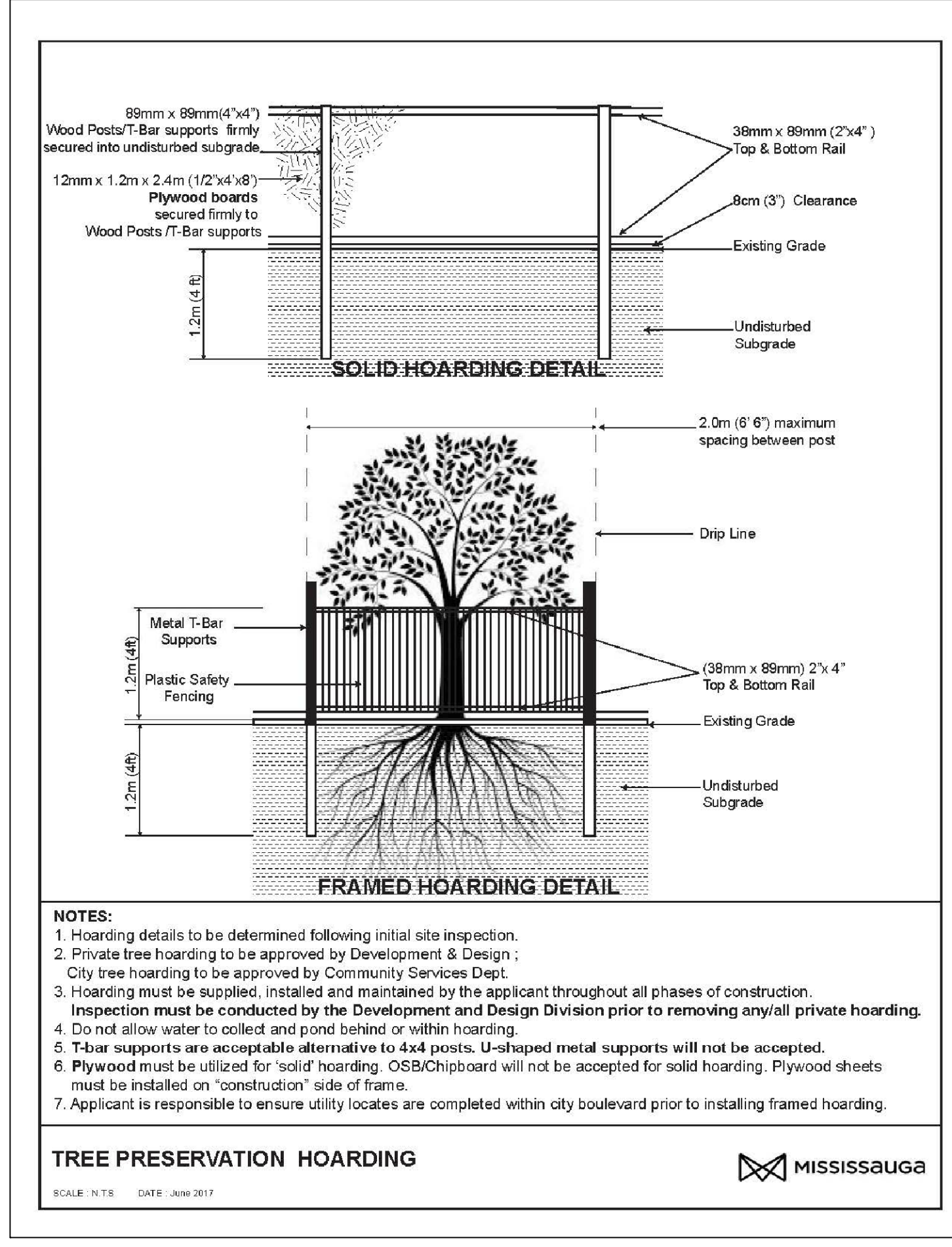


TOPOGRAPHIC INFORMATION IMPORTED FROM TOPOGRAPHIC SURVEY
PREPARED BY DAVID B. SEARLES SURVEYING LTD. (ONTARIO LAND SURVEYORS)



NOTES:
1. Hoarding details to be determined following initial site inspection.
2. Private tree hoarding to be approved by Development & Design.
3. City tree hoarding to be approved by Community Services Dept.
4. Hoarding must be supplied, installed and maintained by the applicant throughout all phases of construction.
5. Inspection must be conducted by the Development and Design Division prior to removing any/all private hoarding.
6. Do not allow water to collect and pond behind or within hoarding.
7. T-bar supports are acceptable alternative to 4x4 posts. U-shaped metal supports will not be accepted.
8. Plywood must be utilized for "solid" hoarding. OSB/Chipboard will not be accepted for solid hoarding. Plywood sheets must be installed on "construction" side of frame.
9. Applicant is responsible to ensure utility locates are completed within city boulevard prior to installing framed hoarding.

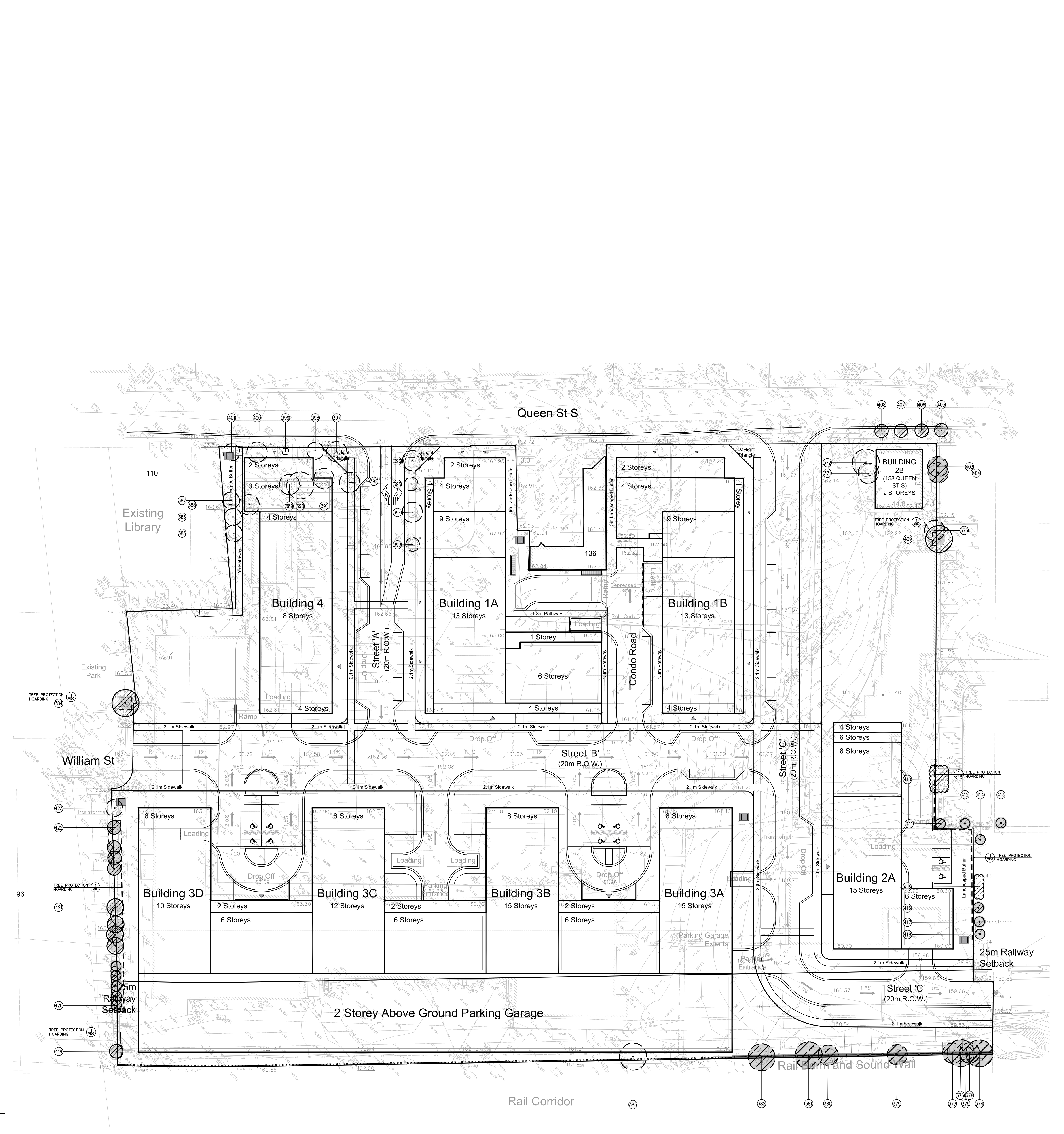
TREE PRESERVATION HOARDING
SCALE: N.T.S. DATE: JAN 2017

1 V100 TREE HOARDING DETAILS

KEY	SPECIES	DBH (cm)	CROWN (m)	HEALTH	STRUCTURE	COMMENTS	PRESERVATION DIRECTION	OWNERSHIP	MIN. TPZ	KEY
371	Honey Locust	21	6	Fair	One-sided	Leaning, crowded by adjacent tree, adjacent to building, rootzone	Remove	Private	1.8	371
372	Honey Locust	30	8	Fair	Irregular	Leaning, crowded by adjacent tree, adjacent to building, rootzone covered with concrete, double leader	Remove	Private	2.4	372
373	Siberian Elm	26	6	Fair	One-sided	Crowded by adjacent tree, adjacent to fence, vine entangled	Remove	Private	1.8	373
374	Black Walnut	31	8	Good	Irregular	Crowded by over head wire, broken branches, crowded by adjacent tree	Preserve*	Boundary	2.4	374
375	Black Walnut	19	4	Fair	Irregular	Crowded by over head wire, crowded by adjacent tree	Preserve*	Boundary	1.8	375
376	Crabapple	11-21	8	Fair	Multi-stem	4 stems, crowded by adjacent tree	Preserve*	Boundary	1.8	376
377	Manitoba Maple	24	6	Poor	Leaning	Crowded by over head wire, crowded by adjacent tree, double leader	Preserve*	Boundary	1.8	377
378	Manitoba Maple	24	6	Poor	Leaning	Crowded by adjacent tree, adjacent to building, crowded by overhead wire	Preserve*	Boundary	1.8	378
379	Manitoba Maple	16-20	8	Poor	Multi-stem	4 stems, crowded by adjacent tree, adjacent to building, crowded by overhead wire, crowded braching, decay at base	Preserve*	Boundary	1.8	379
380	Manitoba Maple	13-17	6	Poor	Multi-stem	3 stems, major prune at 0.3m, decay at base, epicormic growth, crowded by overhead wire	Preserve*	Boundary	1.8	380
381	Manitoba Maple	51-34	8	Poor	Multi-stem	2 stems, epicormic growth, crowded by overhead wire	Preserve*	Boundary	1.8	381
382	Manitoba Maple	19-26	6	Poor	Multi-stem	4 stems, epicormic growth, minor deadwood, poor pruning, crowded by overhead wire	Preserve*	Boundary	1.8	382
383	Manitoba Maple	12-22	8	Fair	Group	7 stems, crowded by adjacent tree, epicormic growth, broken branches, crowded by overhead wire	Remove	Private	1.8	383
384	Siberian Elm	18-27	8	Fair	Multi-stem	3 stems, basal decay, major deadwood, poor pruning, crowded by overhead wire	Preserve	Parkland	1.8	384
385	Linden	18	5	Fair	Irregular	Minor broken branches, girdling roots	Remove	Private	1.8	385
386	Linden	18	5	Fair	Irregular	Minor broken branches, exposed roots	Remove	Private	1.8	386
387	Linden	21	5	Fair	Irregular	Minor broken branches, girdling roots, cross branching	Remove	Private	1.8	387
388	Linden	26	6	Fair	Irregular	Adjacent to building, crowded branching, cross branching, broken branches	Remove	Private	1.8	388
389	Honey Locust	17	6	Good	One-sided	Crowded by adjacent tree, crowded branching	Remove	Private	1.8	389
390	Honey Locust	24	8	Good	One-sided	Crowded by adjacent tree, crowded branching	Remove	Private	1.8	390
391	Colorado Spruce	22	6	Poor	Pyramidal	Declining, major deadwood, dead leader	Remove	Private	1.8	391
392	Red Maple	14	6	Fair	Irregular	Crowded by over head wire, girdling roots	Remove	Exempt	1.8	392
393	Red Maple	16	4	Poor	One-sided	Major dieback, leaning, declining	Remove	Private	1.8	393
394	Red Maple	18	6	Fair	Irregular	Crowded branching, cross branching	Remove	Private	1.8	394
395	Red Maple	16	4	Poor	Irregular	Mechanical damage at base, open wound, minor bark peeling	Remove	Private	1.8	395
396	Red Maple	22	6	Fair	One-sided	Major deadwood, epicormic growth, declining	Remove	Private	1.8	396
397	Red Maple	20	6	Fair	One-sided	Crowded by over head wire, cross branching, girdling roots, double leader	Remove	Private	1.8	397
398	Red Maple	16	5	Poor	Irregular	Excessive dieback throughout	Remove	Private	1.8	398
399	Red Maple	7	2	Dead	Dead	Major dieback, leaning, declining	Remove	Exempt	1.2	399
400	Red Maple	23	6	Fair	Irregular	Poor Pruning, broken branches, minor deadwood, girdling roots, exposed roots	Remove	Private	1.8	400
401	Red Maple	22	5	Fair	Irregular	Poor Pruning, broken branches, minor deadwood, girdling roots, exposed roots	Remove	Private	1.8	401
403	Siberian Elm	22	6	Dead	Dead		Preserve*	Neighbour	1.8	403
404	Siberian Elm	24	6	Dead	Dead		Preserve*	Neighbour	1.8	404
405	Red Maple	12	4	Good	Symmetrical	Boulevard tree, frost damage, double leader	Preserve	Municipal	1.5	405
406	Red Maple	9	4	Good	Symmetrical	Boulevard tree, frost damage, broken branches	Preserve	Municipal	1.2	406
407	Red Maple	9	4	Good	Symmetrical	Boulevard tree, open wound on trunk, broken branches	Preserve	Municipal	1.2	407
408	Red Maple	9	4	Fair	Symmetrical	Boulevard tree, mechanical damage on trunk	Preserve	Municipal	1.2	408
409	Norway Spruce	26	8	Poor	One-sided	Double leader, crowded by adjacent tree, adjacent to fence	Preserve	Neighbour	1.8	409
410	Manitoba Maple	18-23	6	Fair	Double Stem	2 stems, crowded by adjacent tree, adjacent to fence	Preserve	Neighbour	1.8	410
411	Norway Spruce	24	6	Fair	Irregular	Crowded by adjacent tree, adjacent to fence, double leader, minor deadwood, broken branches	Preserve	Neighbour	1.8	411
412	Norway Spruce	26	8	Good	Irregular	Crowded by adjacent tree, adjacent to fence, double leader, minor deadwood, broken branches	Preserve	Neighbour	1.8	412
413	White Spruce	24	8	Fair	Pyramidal	Crowded by adjacent tree, adjacent to fence, branching to grade	Preserve	Neighbour	1.8	413
414	Honey Locust	20	8	Fair	One-sided	Crowded by adjacent tree, adjacent to fence, adjacent to building, double leader	Preserve	Neighbour	1.5	414
415	Norway Spruce	15-20 3 stems > 15cm	4	Fair	Group	3 stems, one sided form, adjacent to building, branching to grade	Preserve	Neighbour	1.5	415
416	Honey Locust	23	6	Fair	One-sided	Adjacent to building, crowded by adjacent tree, leaning	Preserve	Neighbour	1.8	416
417	Honey Locust	24	6	Good	Irregular	Adjacent to fence, crowded by adjacent tree	Preserve	Neighbour	1.8	417
418	Honey Locust	19	6	Good	Irregular	Adjacent to fence, crowded by adjacent tree	Preserve	Neighbour	1.5	418
419	Colorado Spruce	16	4	Fair	Pyramidal	Branching to grade, adjacent to fence, crowded by overhead wire, minor deadwood, exposed roots, dieback in lower branches	Preserve	Neighbour	1.5	419
420	Magnolia	8-9	3	Good	Group	5 stems, leaning, adjacent to fence	Preserve	Boundary	1.2	420
421	Scots Pine	15-18 4 stems > 15cm	5	Good	Group	4 stems, crowded by adjacent tree, dieback in lower branches	Preserve	Boundary	1.5	421
422	Crabapple	12-14	4	Fair	Group	4 stems, epicormic growth, frost crack on trunk, exposed roots	Preserve	Boundary	1.5	422
423	Colorado Spruce	21	5	Poor	Pyramidal	Major deadwood, declining, adjacent to fence, crowded by overhead wire	Remove	Private	1.8	423

* TREES ARE TO BE PRESEVED UNTIL WRITTEN PERMISSION FROM THEIR REMOVAL IS PROVIDED BY THE ADJACENT LANDOWNER

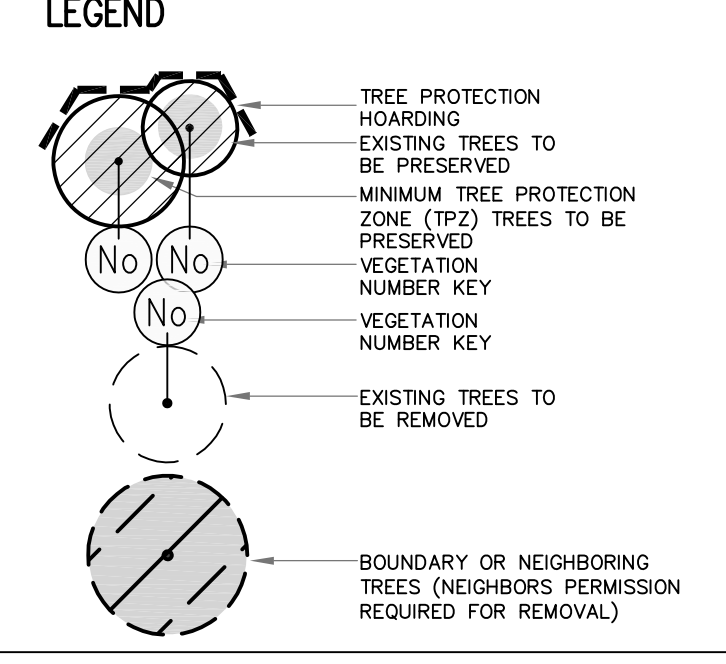
2 V100 TREE INVENTORY



GENERAL NOTES

- VERIFY ALL DIMENSIONS.
- DO NOT SCALE DRAWINGS.
- REPORT ANY DISCREPANCIES, DISCOVERED ERRORS, OR OMISSIONS TO THE LANDSCAPE ARCHITECT BEFORE PROCEEDING.
- IT IS ADVISED THAT CONTRACTORS CONTACT THE LANDSCAPE ARCHITECT PRIOR TO CONSTRUCTION TO ENSURE THE USE OF THE LATEST REVISED DRAWINGS.
- DRAWINGS AND SPECIFICATIONS ARE THE PROPERTY OF THE LANDSCAPE ARCHITECT.

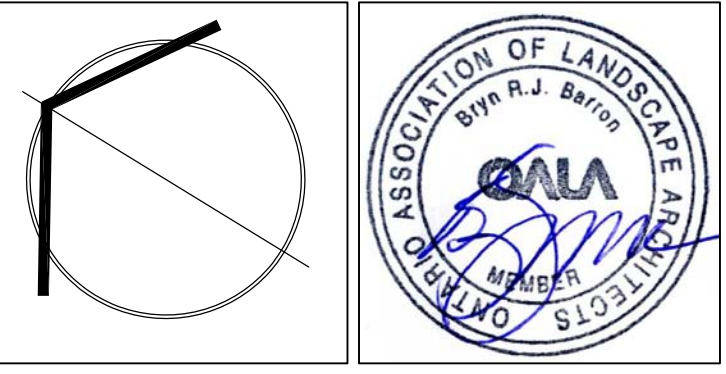
KEY MAP



Matthew C. Geffers
MATTHEW C. GEFFERS
International Society of Arboriculture
Certified Arborist #04114A
Date: MAY 15th, 2024

2	MARCH 13, 2024	ISSUED FOR SUBMISSION	BB
1	AUGUST 16, 2023	ISSUED FOR SUBMISSION	BB
No.	DATE	REVISION	BY

It is the responsibility of the Contractor and/or Owner to ensure that the drawings with the latest revisions are used for construction.



SBK 3770 HURONTARIO STREET, SUITE 320
MISSISSAUGA, ONTARIO, L4R 3G5
T: 416.695.4949 F: 905.712.3101
WWW.STRYBOS.COM

STRYBOS BARRON KING
LANDSCAPE ARCHITECTURE

PROJECT:
142-148 QUEEN ST S
MISSISSAUGA, ONTARIO

DRAWING TITLE:
EXISTING TREE INVENTORY AND PROTECTION PLAN

SCALE:	1:500	PROJECT No.	5903
DATE:	APR 13, 2023	DRAWING No.	V100
DRAWN BY:	GC	CHECKED BY:	MG