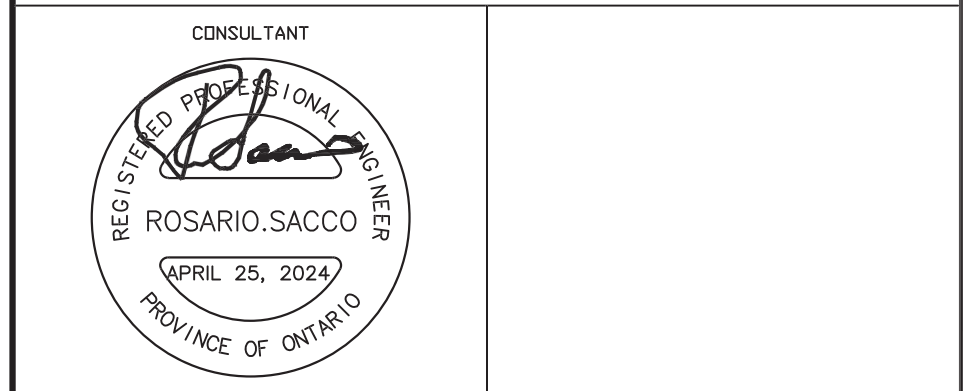


KEY PLAN N.T.S.

Revision	Comments	Date	By	App'd
1.	REVISED TO ADDRESS CITY APRIL 19, 2024 COMMENTS	APRIL 25, 2024	R.S.	

CITY OF MISSISSAUGA BENCHMARK No. 1080
BENCHMARK IS SET VERTICALLY ON THE SOUTH FACE OF THE SOUTH-WEST END OF THE SOUTH-WEST END OF THE CONCRETE BRIDGE ON TANNERY STREET
ELEVATION = 157.018



CITY OF MISSISSAUGA
REGIONAL MUNICIPALITY OF PEEL

URBAN ECOSYSTEMS LIMITED
7050 WESTON ROAD, SUITE 600
WOODBRIDGE, ONTARIO L4L 8G7
uel@urbanecosystems.com
t. (905)856-0629
f. (905)856-0698

THE VIC 2
150 RUTLEDGE ROAD
DETAILS

Designed By	D.J.S.	Checked by	R.S.	Project No.	19013
Drawn By	V.T.	Approved by	R.S.	Drawn No.	DET-1
Scale	1 : 300	Date	MARCH 2022	Sheet No.	- OF -