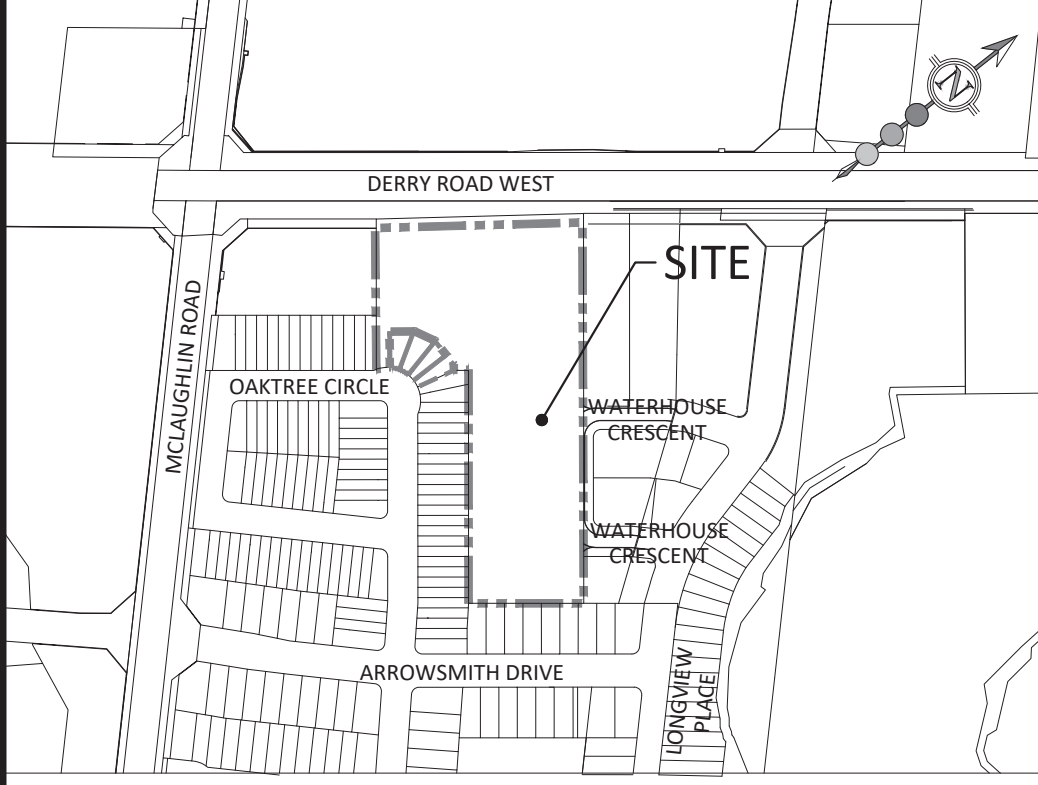
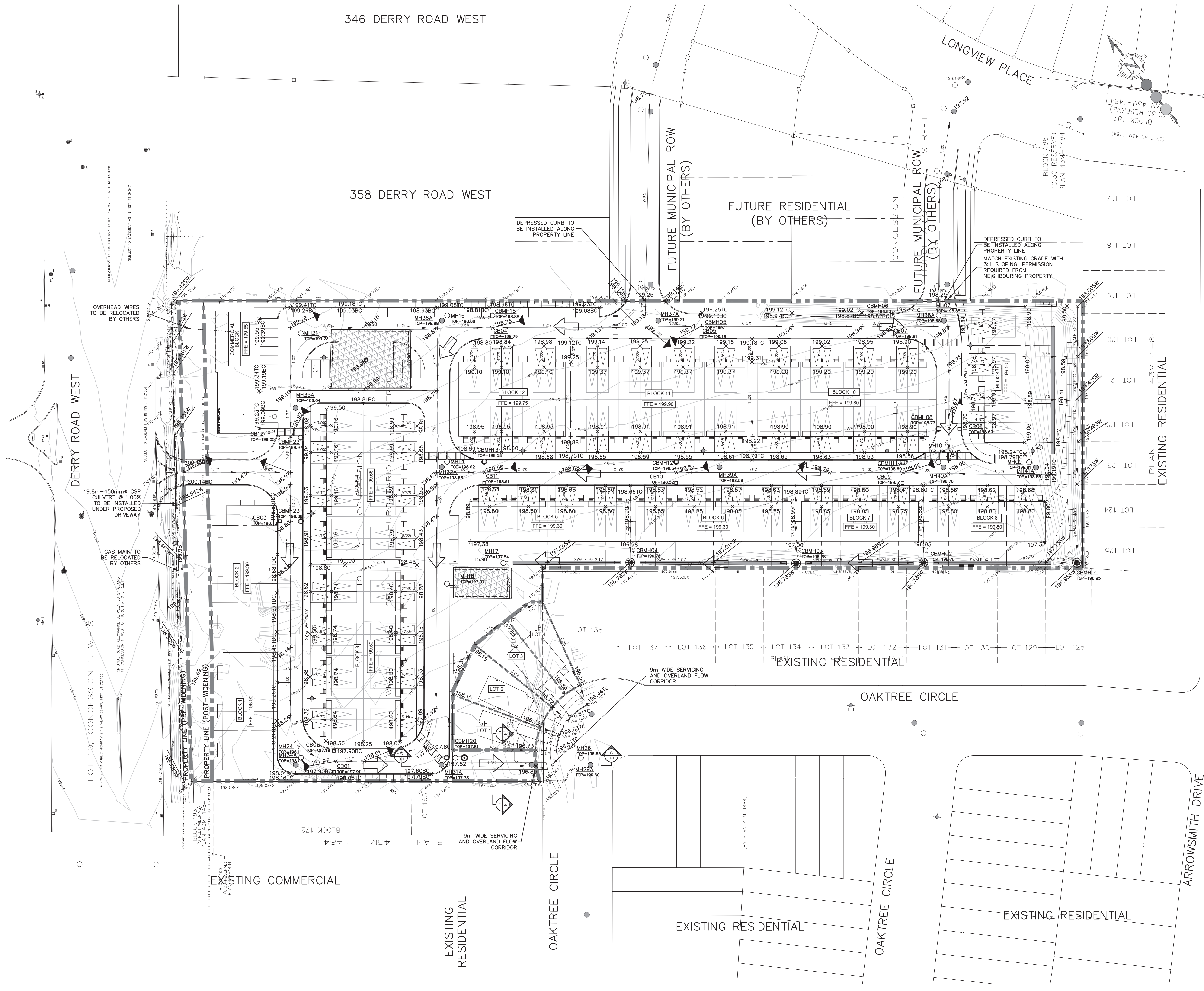


346 DERRY ROAD WEST

358 DERRY ROAD WEST



**KEY PLAN**  
N.T.S.

**BENCHMARK:** ELEV. 194.056m  
ELEVATIONS ARE REFERRED TO THE CITY OF MISSISSAUGA BENCHMARK NO. 1050, BEING A TABLET SET HORIZONTALLY AT THE SOUTHEAST CORNER OF MCLAUGHLIN ROAD AND ARROWSMITH DRIVE, HAVING A PUBLISHED ELEVATION OF 194.056m.

**LEGEND:**

	LIMIT OF CONDOMINIUM
	PROPOSED LOT LINE
	TREE PRESERVATION HOARDING
	DEPRESSED CURB
	PROPOSED ELEVATION
	EXISTING ELEVATION
	CENTERLINE OF ROAD ELEVATION
	PROPOSED GUTTER GRADE ELEVATION
	PROPOSED BOTTOM OF CURB ELEVATION
	PROPOSED TOP OF CURB ELEVATION
	PROPOSED EMBANKMENT (MAX. 3:1 UNLESS OTHERWISE NOTED)
	PROPOSED STORM MAINTENANCE HOLE
	PROPOSED CATCHBASIN MAINTENANCE HOLE
	PROPOSED CATCHBASIN
	100 YEAR CAPTURE LOCATION
	PROPOSED SANITARY MAINTENANCE HOLE
	PROPOSED HYDRANT
	INFILTRATION TRENCH

\*REFER TO DRAWING R-1 FOR REMOVAL PLAN  
TOPOGRAPHIC SURVEY PROVIDED BY KRCMAR SURVEYORS LTD, JULY 2016  
ELEVATIONS SHOWN HEREON ARE MISSISSAUGA DATUM AND ARE RELATED TO THE CITY OF MISSISSAUGA BENCHMARK No. 1050 HAVING AN ELEVATION OF 194.056 METRES.

**REVISIONS**

No.	DESCRIPTION	DATE	BY	APPROVED
1.	ISSUED FOR 1ST SUBMISSION REZONING	DEC 05/23	E.R.S.	

**SCS consulting group ltd**  
30 CENTURIAN DRIVE, SUITE 100  
MARGHAM, ONTARIO L3R 8B8  
TEL: (905) 475-1900  
FAX: (905) 475-8335

**376 AND 390 DERRY ROAD WEST  
BALLYMORE HOMES**

**GRADING PLAN**

DATE: NOVEMBER 2023	DESIGNED BY: E.R.S.	CHECKED BY: J.S.H.
SCALE: 1:500	DRAWN BY: E.R.S.	CHECKED BY: J.S.H.

PROJECT No: **2509**  
DRAWING No: **GR-1**