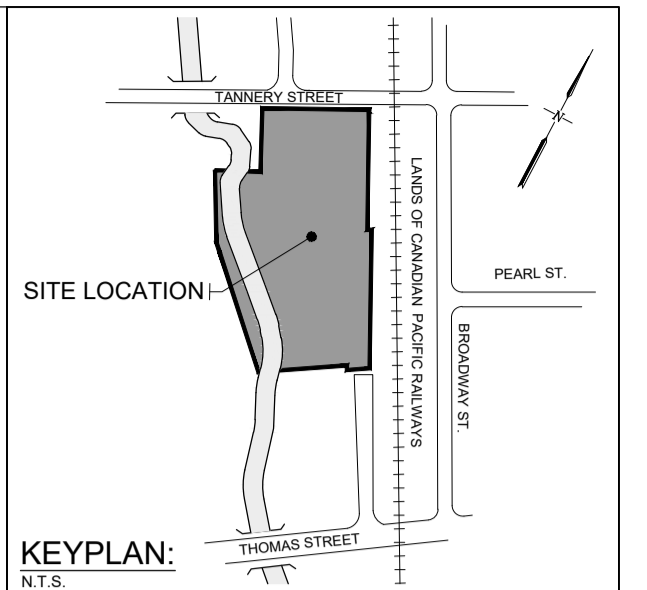
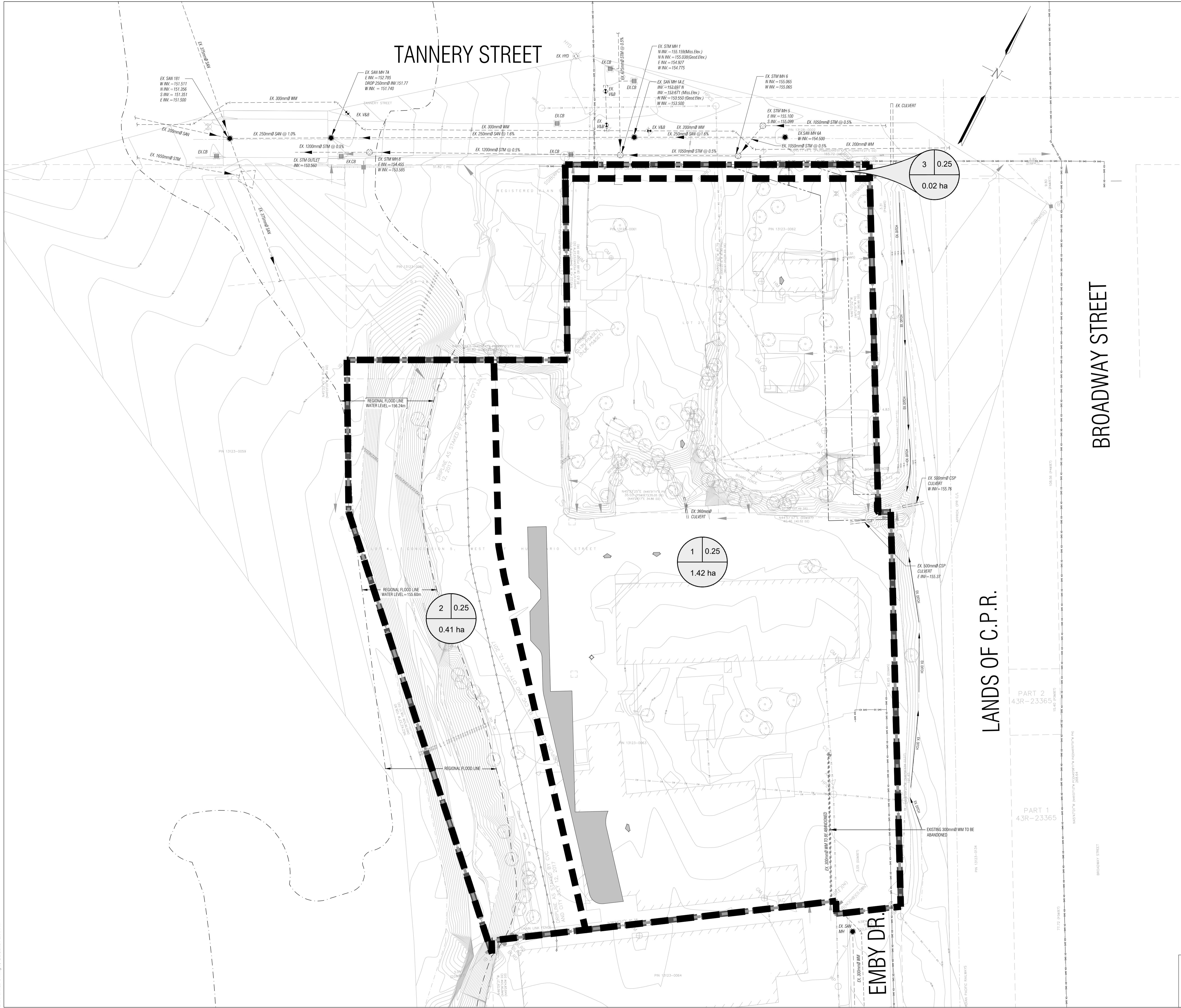


FILE C:\Users\jrippe\Dropbox\Greystone\Civil\_3D\Projects\23\_394\_Tannery\_WORKING\_FOLDER\Drawings\23\_394\_DR1\_012\_Plan.dwg  
 LAST SAVED BY: jrippe, 4/29/2024 2:09 PM



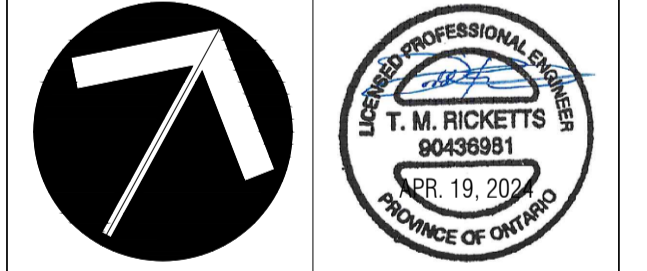
**LEGEND:**

LIMIT OF CONSTRUCTION	
PROPERTY BOUNDARY	
SANITARY MANHOLE	
STORM MANHOLE	
CATCH BASIN MANHOLE	
CATCH BASIN/DOUBLE CATCH BASIN	
PROPOSED SLOPES	
INTERCEPTOR SWALE	
PROPOSED GROUND ELEVATION	
TOP OF CURB ELEVATION	
EXISTING ELEVATION	
PROPOSED OVERLAND FLOW ROUTE	
DRAINAGE AREA	
RUN OFF COEFFICIENT	
AREA #	
AREA (ha)	

**SITE PLAN PREPARED BY:** SHM ARCHITECTS INC., MARCH 11TH, 2024.  
**TOPOGRAPHIC & LEGAL:** PREPARED BY FIDDELS CLIPSHAM INC. DATED JULY 17TH, 2017.  
**COORDINATES:** ELEV. 159.56 CUT CROSS ON THE SIDEWALK OPPOSITE 851 TANNERY ST. LOCATED 18.1m SW FROM THE MOST WESTERLY RAIL OF C.P.R. LINE, 4.3m SW FROM THE GAS VENT PIPE & 21.2m NW FROM THE W.V.  
**CITY BENCHMARK:** ELEVATIONS ARE REFERRED TO THE CITY OF MISSISSAUGA BENCHMARK NO. 909 HAVING A PUBLISHED ELEV. OF 456.903 METRES.

**NOTES:**  
 1. This drawing is the exclusive property of Greystone Engineering Inc. The reproduction of any part without prior written consent of the office is strictly prohibited.  
 2. The contractor shall verify all elevations, slope and details on site and report any discrepancies to the engineer.  
 3. This drawing is to be read and understood in conjunction with all other plans and documents applicable to this project.

**NOT FOR CONSTRUCTION**



Number	Issued/Revision	Date	Auth
1	OPA/ZBA REVIEW	24/04/19	TR

**Greystone Engineering**  
 Cambridge: 154 King Street East, Cambridge, Ontario N3H 3H4, (519) 896-1310, Tom.Ricketts@greystone-eng.ca, www.greystoneinc.ca  
 Toronto: 522 Mount Pleasant Road, Suite 205, Toronto, Ontario M4S 2H3, (416) 449-0059

Client: **NYX TANNERY LP.**

Drawing Title:  
**PRE - DRAINAGE PLAN**  
**51-57 TANNERY STREET & 208 EMBURY DRIVE**  
 (CITY FILE #: OPZR-104636)  
 RESIDENTIAL DEVELOPMENT  
 MISSISSAUGA, ON

51 Tannery legal description: PT LT 27, PL STR1, AS IN ST2792; MISSISSAUGA  
 57 Tannery St legal description: PT LT 27, PL STR1, AS IN R01078655; CITY OF MISSISSAUGA  
 208 Embury Dr legal description: PT LT 4, CON 5 WEST OF HURONTARIO ST TORONTO TWP, AS IN R0423322; PT LT 26, PL STR1, AS IN R0423322; S/T ST6612; CITY OF MISSISSAUGA

Drawn By:	Checked By:	Date:	Scale:	Drawing No.:
NG	TR	2023-KK-KX	25:904	DR1