

I REQUIRE THIS PLAN TO BE DEPOSITED UNDER THE LAND TITLES ACT.  
MAY 9, 2018  
*Theodor H. Ims*  
THEODOR H. IMS  
ONTARIO LAND SURVEYOR

PLAN 43R-38340  
RECEIVED AND DEPOSITED  
June 7, 2018  
*Theodor H. Ims*  
REPRESENTATIVE FOR THE LAND REGISTRAR FOR THE LAND TITLES DIVISION OF PEEL (NO. 43)

SCHEDULE OF PARTS				
PART	LOT	PLAN	PIN	AREA
1	PART LOT 1	RANGE 2 CREDIT INDIAN RESERVE	PART OF PIN 13469-0016(LT)	74.2 m <sup>2</sup>
2	LOT 1			46.1 m <sup>2</sup>

PARTS 1 & 2 COMPRISE PART OF PIN 13469-0016(LT)

**PLAN OF SURVEY**  
SHOWING PART OF LOT 1, RANGE 2  
CREDIT INDIAN RESERVE  
(GEOGRAPHIC TOWNSHIP OF TORONTO)  
CITY OF MISSISSAUGA  
REGIONAL MUNICIPALITY OF PEEL



METRIC: DISTANCES AND COORDINATES SHOWN ON THIS PLAN ARE IN METRES AND CAN BE CONVERTED TO FEET BY DIVIDING BY 0.3048.

**ACI** AUER CAMPBELL & IMS SURVEY CONSULTANTS INC.  
ONTARIO LAND SURVEYORS

**NOTES**

- DIMENSIONS SHOWN ARE MEASURED UNLESS ANOTHER SOURCE IS SHOWN.
- ORIGIN OF MONUMENTS UNKNOWN UNLESS OTHERWISE NOTED.
- BEARINGS ARE GRID BEARINGS REFERRED TO NAD 83 ORIGINAL (ADJUSTED TO HU2016 HORIZONTAL DATUM) ZONE 10 CENTRAL MERIDIAN 79°30' LONGITUDE AND ARE DERIVED FROM MONUMENTS HU2016115 AND HU2016114 HAVING A BEARING OF N54°12'15"W.

OBSERVED REFERENCE POINTS		
OBSERVED REFERENCE POINTS (ORPs) DERIVED FROM GPS OBSERVATIONS USING REAL TIME NETWORK (RTN), UTM ZONE 17, NAD83 (ORIGINAL-ADJ) COORDINATES TO URBAN ACCURACY PER SEC. 14 (2) OF O.REG. 216/10		
POINT ID	NORTHING	EASTING
15143	4824471.532	613515.033
10117	4824563.255	613419.046
15477	4824523.592	613460.553
HU2016114	4824516.649	613427.681
HU2016115	4824410.167	613575.344

DISTANCES ARE GROUND AND CAN BE CONVERTED TO GRID BY MULTIPLYING BY THE COMBINED SCALE FACTOR OF 0.999749

COORDINATES CANNOT, IN THEMSELVES, BE USED TO RE-ESTABLISH CORNERS OR BOUNDARIES SHOWN ON THIS PLAN.

**SURVEYOR'S CERTIFICATE**

I CERTIFY THAT:

- THIS SURVEY AND PLAN ARE CORRECT AND IN ACCORDANCE WITH THE SURVEYS ACT, THE SURVEYORS ACT AND THE LAND TITLES ACT AND THE REGULATIONS MADE UNDER THEM.
- THE SURVEY WAS COMPLETED ON MARCH 19, 2018.

DATED:  
MAY 9, 2018.

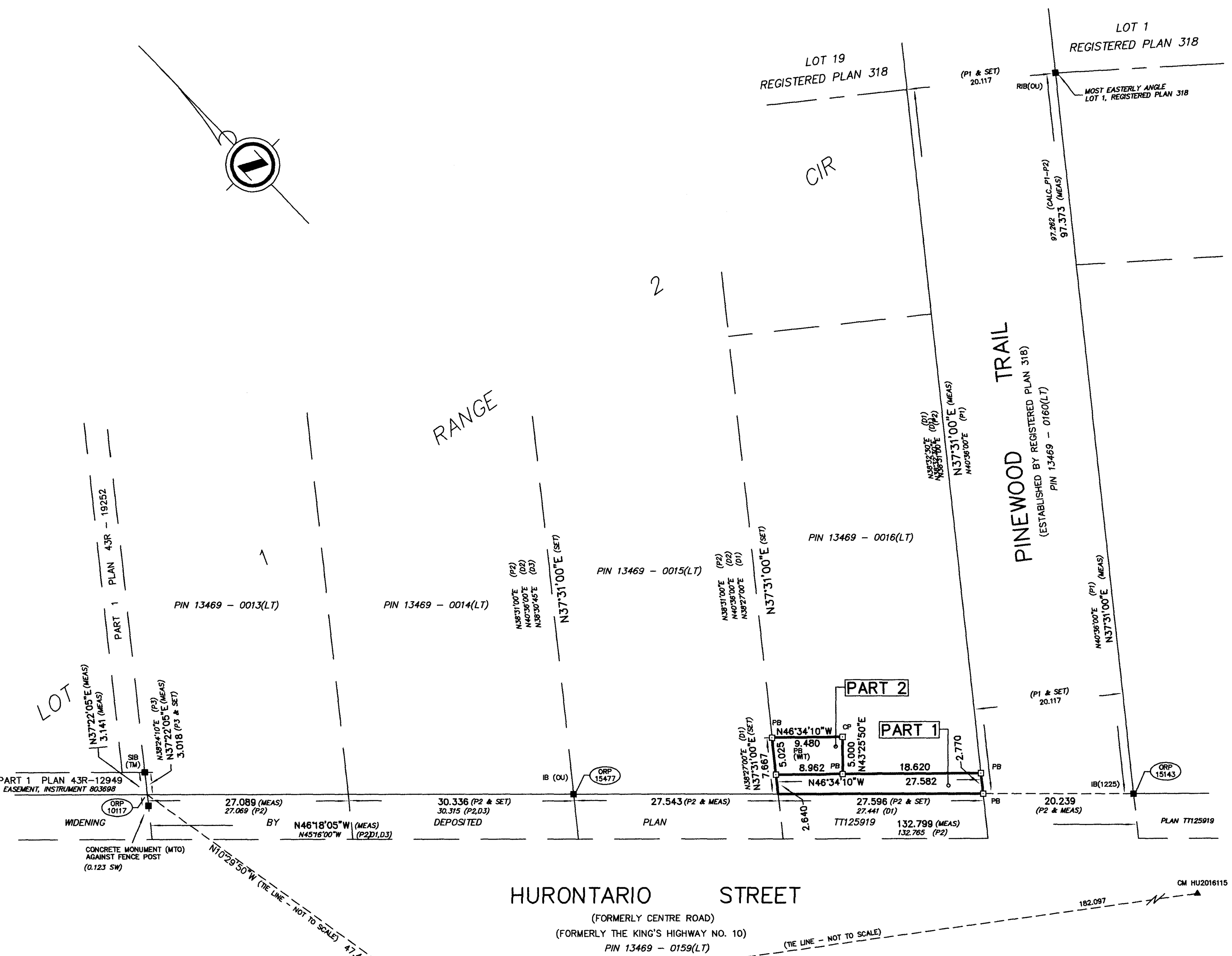
*Theodor H. Ims*  
THEODOR H. IMS, OLS  
AUER CAMPBELL & IMS SURVEY CONSULTANTS INC.

**ACI SURVEY CONSULTANTS**  
ONTARIO LAND SURVEYORS

582 FREDERICK ST, KITCHENER, ON  
T: 519-578-2220 F: 519-576-6044

DATE: 2018-05-09	17297M.CRD	17297-REF	MA	THI
REFPLAN	FILE NUMBER: 17297			
CITY OF MISSISSAUGA		HLRT - PLAN 157-2		

www.landsurveyor.ca



- LEGEND**
- - FOUND SURVEY MONUMENT
  - - PLANTED SURVEY MONUMENT
  - IB - IRON BAR
  - SIB - STANDARD IRON BAR
  - IT - IRON TUBE
  - CM - CONCRAL MONUMENT
  - RIB - ROUND IRON BAR
  - PB - PLASTIC BAR
  - CC - CUT CROSS
  - CP - MAGNETIC NAIL AND WASHER
  - MEAS - MEASURED
  - OU - ORIGIN UNKNOWN
  - WIT - WITNESS
  - CIR - CREDIT INDIAN RESERVE

- P1 - REGISTERED PLAN 318
- P2 - DEPOSITED PLAN TT125919
- P3 - PLAN 43R-12949
- D1 - INSTRUMENT NO. 513259
- D2 - INSTRUMENT NO. 1011963
- D3 - INSTRUMENT NO. 736445
- MTO - MINISTRY OF TRANSPORTATION OF ONTARIO
- 1225 - DAVID B SEARLES SURVEYING LTD
- ACI - AUER CAMPBELL & IMS SURVEY CONSULTANTS INC.
- TM - TARASICK, McMILLAN LIMITED