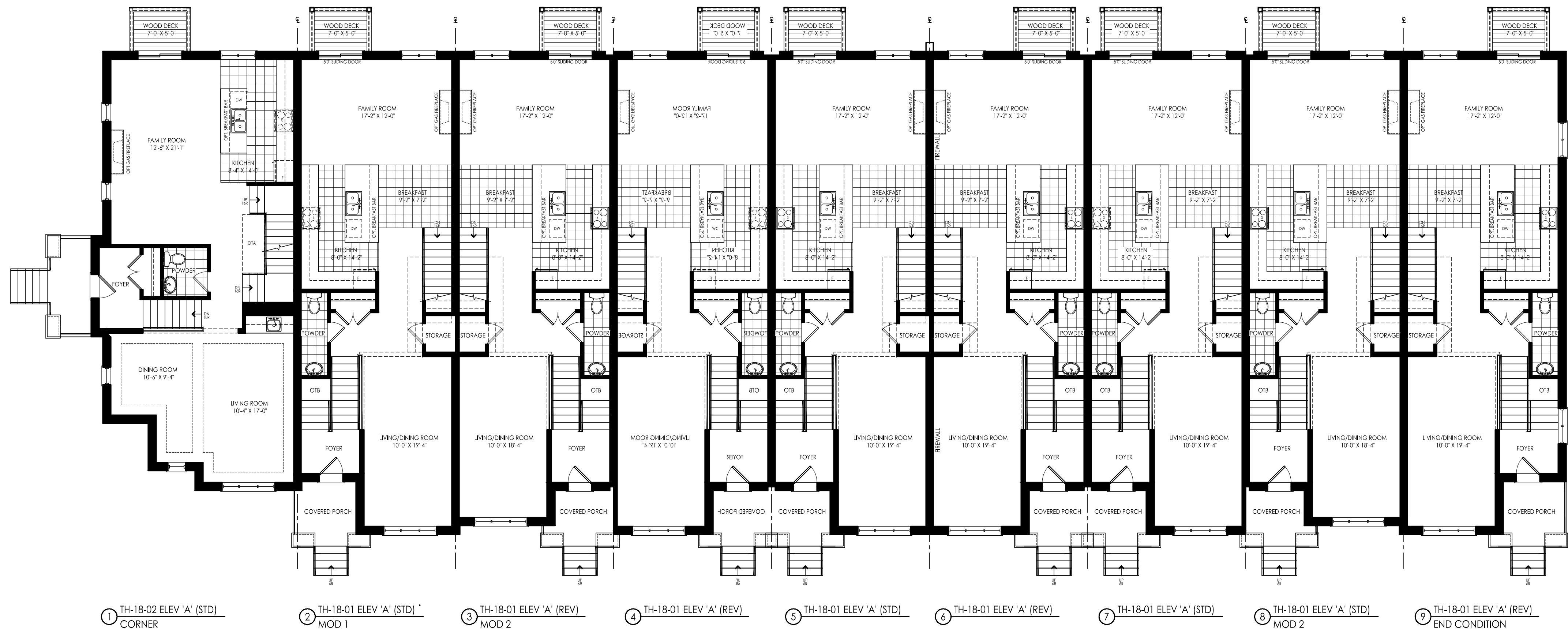


1 TH-18-02 ELEV 'A' (STD) CORNER
 2 TH-18-01 ELEV 'A' (STD) MOD 1
 3 TH-18-01 ELEV 'A' (REV) MOD 2
 4 TH-18-01 ELEV 'A' (REV)
 5 TH-18-01 ELEV 'A' (STD)
 6 TH-18-01 ELEV 'A' (REV)
 7 TH-18-01 ELEV 'A' (STD)
 8 TH-18-01 ELEV 'A' (STD) MOD 2
 9 TH-18-01 ELEV 'A' (REV) END CONDITION

GROUND FLOOR - BLOCK 1



1 TH-18-02 ELEV 'A' (STD) CORNER
 2 TH-18-01 ELEV 'A' (STD) MOD 1
 3 TH-18-01 ELEV 'A' (REV) MOD 2
 4 TH-18-01 ELEV 'A' (REV)
 5 TH-18-01 ELEV 'A' (STD)
 6 TH-18-01 ELEV 'A' (REV)
 7 TH-18-01 ELEV 'A' (STD)
 8 TH-18-01 ELEV 'A' (STD) MOD 2
 9 TH-18-01 ELEV 'A' (REV) END CONDITION

SECOND FLOOR - BLOCK 1

Client: Milani Group
 Project: Port Credit Mills/ougo
 Model: TH-18-HL-
REVISION NEEDED AUG-15
 Project #: 20064
 Scale: 1/8" = 1'-0"
 Page: