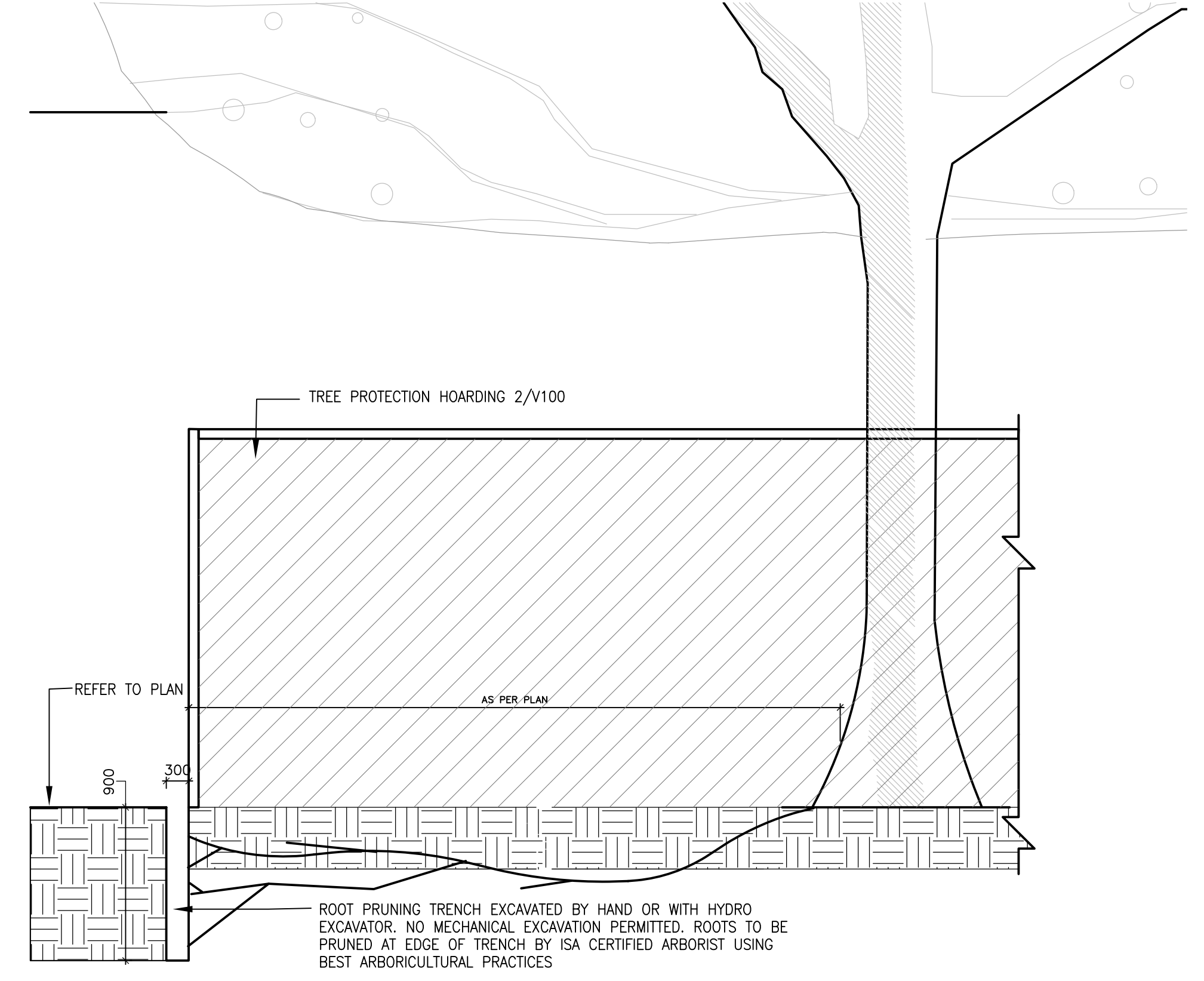
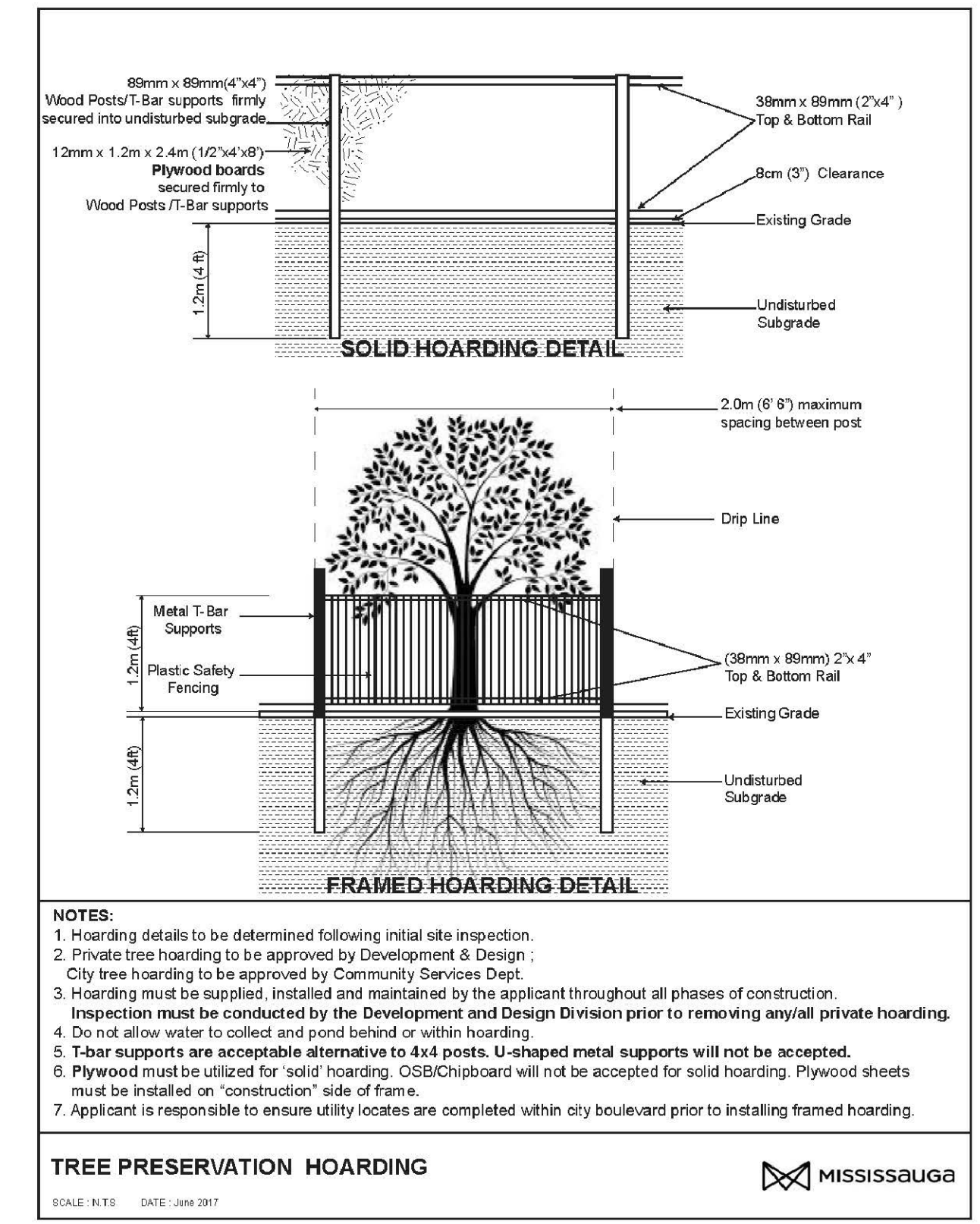


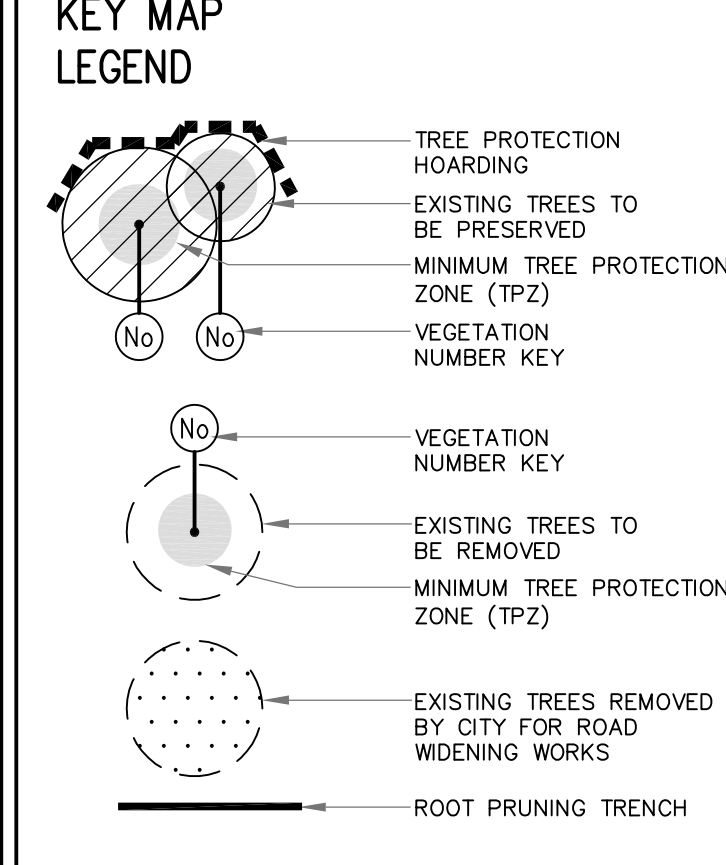
EXISTING TREE INVENTORY

KEY SPECIES	CALIPER IN (cm)	CROWN IN (m)	HEALTH G/F/P	STRUCTURE	COMMENTS	PRESERVATION DIRECTION	TREE CATEGORY	MIN. TPZ	KEY
1 SIBERIAN ELM	43.0	10.0	FAIR	ONE SIDED FORM	HIGH CROWN, CROWN SIGNIFICANTLY ELEVATED, MINOR SUCKER GROWTH ON STEM	REMOVED BY CITY	CITY	3	1
2 COLORADO BLUE SPRUCE	36.0	8.0	GOOD	ASYMMETRICAL FORM	CROWDED BY ADJACENT TREE, ELEVATED CROWN	PRESERVE PRIVATE	2.4	2	2
3 NORWAY SPRUCE	37.5	8.0	POOR	NARROW FORM	CROWDED BY ADJACENT TREE, TOP THIRD OF TREE IS DEAD	PRESERVE NEIGHBOUR	2.4	3	3
4 WHITE MULBERRY	37.59	15.0	POOR	DOUBLE STEM	STEM SPLITS AT GRADE, SIGNIFICANT DEADWOOD AND DIEBACK THROUGHOUT, MAY BE IN A GENERAL STATE OF DECLINE	REMOVE PRIVATE	3.6	4	4
5 MANITOBA MAPLE	21.0	8.0	FAIR	ONE SIDED FORM	LEANING, CROWDED BY ADJACENT TREE, LOWER LIMBS VINE ENTANGLED	REMOVE PRIVATE	1.8	5	5
6 WHITE PINE	85.5	12.0	GOOD	GOOD FORM	MATURE, ELEVATED CROWN	PRESERVE NEIGHBOUR	4.2	6	6
7 NORWAY MAPLE	23.0	5.0	GOOD	ONE SIDED FORM	CROWDED BY ADJACENT TREE	PRESERVE NEIGHBOUR	1.8	7	7
8 SILVER MAPLE	15.5	5.0	FAIR	NARROW FORM	HIGH CROWN, CROWDED BY ADJACENT TREE	PRESERVE NEIGHBOUR	1.8	8	8
9 SILVER MAPLE	15.0	5.0	GOOD	ONE SIDED FORM	CROWDED BY ADJACENT TREE	PRESERVE NEIGHBOUR	1.8	9	9
10 BLACK CHERRY	32.5	10.0	FAIR	ONE SIDED FORM	HIGH CROWN, CROWDED BY ADJACENT TREE, MAJORITY OF CROWN OVER HANGS SUBJECT PROPERTY	PRESERVE NEIGHBOUR	2.4	10	10
11 SILVER MAPLE	47.5	17.0	GOOD	ASYMMETRICAL FORM	CROWDED BY ADJACENT TREE, MINOR DIEBACK ON LOWER BRANCHES	PRESERVE BOUNDARY	3	11	11
12 SILVER MAPLE	26.5	9.0	FAIR	ONE SIDED FORM	LEANING, SUBORDINATED BY ADJACENT TREE, ENTIRE CROWN OVER HANGS SUBJECT PROPERTY	PRESERVE BOUNDARY	1.8	12	12
13 BLACK CHERRY	35.0	8.0	POOR	ONE SIDED FORM	LEANING, CROWDED BY ADJACENT TREE, SIGNIFICANT DIEBACK AND SUCKER GROWTH THROUGHOUT, ENTIRE CROWN OVERHANGS ADJACENT PROPERTY TO THE NORTH	REMOVE BOUNDARY	2.4	13	13
14 RED OAK	30.5	9.0	GOOD	GOOD FORM	MINOR DIEBACK ON LOWER BRANCHES	PRESERVE PRIVATE	2.4	14	14
15 WHITE PINE	+/- 65	12.0	GOOD	GOOD FORM	MATURE, HIGH CROWN, STEM ENCASED WITHIN A PRECAST, UNIT PAVED PATIO	PRESERVE NEIGHBOUR	4.2	15	15
16 BLACK CHERRY	25.0	7.0	POOR	IRREGULAR FORM	SUBORDINATED BY ADJACENT TREES, EPICORMIC GROWTH THROUGHOUT	PRESERVE NEIGHBOUR	1.8	16	16
17 BLACK CHERRY	30.0	9.0	FAIR	ONE SIDED FORM	CROWDED BY ADJACENT TREE, DEADWOOD AND EPICORMIC GROWTH THROUGHOUT	REMOVE PRIVATE	2.4	17	17
18 WHITE PINE	+/- 60	12.0	POOR	DOUBLE LEADER	TOP HALF DEAD, STEM ENCASED IN BRICK PAVING, DECLINING	PRESERVE NEIGHBOUR	3.6	18	18
19 NORWAY MAPLE	28-38	16.0	FAIR	MULTI-STEMMED	CLUSTER OF 4 STEMS, OPEN CROWN, ONE DEAD STEM, DIEBACK AND DECAY IN SEVERAL OTHER STEMS	REMOVE PRIVATE	2.4	19	19
20 BLACK WALNUT	63.0	20.0	GOOD	BROAD FORM	OPEN CROWN, BROKEN BRANCH IN CROWN, SOME UPPER CROWN DIEBACK	REMOVE PRIVATE	4.2	20	20
21 BUTTERNUT (CULTIVATED)	24.5	10.0	FAIR	ASYMMETRICAL FORM	CROWDED BY ADJACENT TREE, SOME CROWN DIEBACK THROUGHOUT	REMOVE PRIVATE	1.8	21	21
22 NORWAY MAPLE	33.0	9.0	GOOD	ASYMMETRICAL FORM	CROWDED BY ADJACENT TREE, MINOR BASAL DECAY	REMOVE PRIVATE	2.4	22	22
23 NORWAY MAPLE	25.0	4.0	POOR	NARROW FORM	CROWDED BY ADJACENT DEAD ASH, DIEBACK THROUGHOUT	REMOVE PRIVATE	1.8	23	23
24 BLACK WALNUT	50.0	10.0	GOOD	ONE SIDED FORM	HIGH CROWN, CROWDED BY ADJACENT TREE, LOWER BRANCHES VINE ENTANGLED	PRESERVE CITY	3	24	24
25 BLACK WALNUT	40.0	12.0	GOOD	DOUBLE STEM	ONE SIDED FORM, CROWDED BY ADJACENT TREE, HIGH CROWN, MAJORITY OF CROWN OVER HANGS ADJACENT ROAD	REMOVE CITY	2.4	25	25
26 BLACK WALNUT	10-22	6.0	GOOD	DOUBLE STEM	ONE SIDED FORM, CROWDED BY ADJACENT TREE, EPICORMIC GROWTH ON LOWER LIMBS	REMOVE CITY	1.8	26	26
27 NORWAY MAPLE	26.0	5.0	POOR	ONE SIDED FORM	95% DEAD, DECLINING	REMOVE CITY	1.8	27	27
28 BLACK WALNUT	52.0	16.0	GOOD	BROAD FORM	MINOR INTERNAL DIEBACK	REMOVE CITY	3.6	28	28
29 NORWAY MAPLE	23.0	9.0	GOOD	GOOD FORM	DIEBACK ON LOWER BRANCHES	REMOVE CITY	1.8	29	29
30 SPRUCE SPP.	24.5	5.0	DEAD			REMOVE CITY	1.8	30	30
31 WHITE MULBERRY	40.5	7.0	FAIR	ONE SIDED FORM	CROWDED BY ADJACENT TREE, SOME DIEBACK THROUGHOUT CROWN	REMOVE CITY	2.4	31	31
32 ASH	55.0	5.0	DEAD	STUMP WITH WATER SPROUTS		REMOVE PRIVATE	3.6	32	32
33 NORWAY MAPLE	18.0	4.0	GOOD	NARROW FORM	SUBORDINATED BY ADJACENT TREE, ROOT COLLAR FUSED TO ADJACENT TREE	REMOVE CITY	1.8	33	33
34 RED OAK	37.0	9.0	FAIR	ONE SIDED FORM	CROWDED BY ADJACENT TREE, CROWN OVER HANGS ADJACENT ROAD	REMOVE CITY	2.4	34	34
35 RED OAK	39.0	9.0	FAIR	ONE SIDED FORM	CROWDED BY ADJACENT TREE, INTERNAL CROWN DIEBACK, CROWN OVER HANGS ADJACENT ROAD	REMOVE CITY	2.4	35	35
36 NORWAY MAPLE	17.0	7.0	FAIR	ONE SIDED FORM	SUBORDINATED BY ADJACENT TREES, SOME DIEBACK IN CROWN	PRESERVE CITY	1.8	36	36
37 NORWAY MAPLE	40.0	15.0	FAIR	LEANING	CROWDED BY ADJACENT TREE, SOME TWIG TIP DIEBACK THROUGHOUT	REMOVE CITY	2.4	37	37
38 RED OAK	53.0	18.0	GOOD	ASYMMETRICAL FORM	CROWDED BY ADJACENT TREE, MINOR DIEBACK IN UPPER CROWN	REMOVE CITY	3.6	38	38
39 NORWAY MAPLE	40.0	8.0	FAIR	CO-DOMINANT LEADERS	IRREGULAR FORM, CROWDED BY ADJACENT TREE, EPICORMIC GROWTH ON LOWER LIMBS, SOME DEADWOOD IN CROWN	REMOVE CITY	2.4	39	39
40 NORWAY SPRUCE	51.0	10.0	GOOD	GOOD FORM	ELEVATED CROWN, SOME DIEBACK ON CROWDED SIDE	REMOVE CITY	3.6	40	40
41 RED OAK	57.0	13.0	GOOD	GOOD FORM	ONE SIDED FORM, CROWDED BY ADJACENT TREE, CO-DOMINANT LEADERS, MINOR INTERNAL DIEBACK	PRESERVE CITY	3.6	41	41
42 NORWAY SPRUCE	56.5	10.0	FAIR	GOOD FORM	DIEBACK ON LOWER BRANCHES, TWIG TIP DIEBACK THROUGHOUT	PRESERVE CITY	3.6	42	42
43 RED OAK	40.0	9.0	FAIR	ONE SIDED FORM	CROWDED BY ADJACENT TREE, IRREGULAR CROWN FORM, SOME DEADWOOD AND EPICORMIC GROWTH IN CROWN	REMOVED BY CITY	2.4	43	43
44 WHITE MULBERRY	75.0	12.0	POOR	IRREGULAR FORM	SIGNIFICANT WOUND ON WEST SIDE OF STEM, CROWN COMPOSED MAINLY OF EPICORMIC SHOOTS WITH DIEBACK THROUGHOUT	REMOVED BY CITY	4.8	44	44
45 SILVER MAPLE	52.0	10.0	DEAD			REMOVED BY CITY	3.6	45	45
46 COLORADO BLUE SPRUCE	39.0	7.0	FAIR	GOOD FORM	ELEVATED CROWN, BURIED ROOT COLLAR, SOME TWIG TIP DIEBACK THROUGHOUT	REMOVE PRIVATE	2.4	46	46

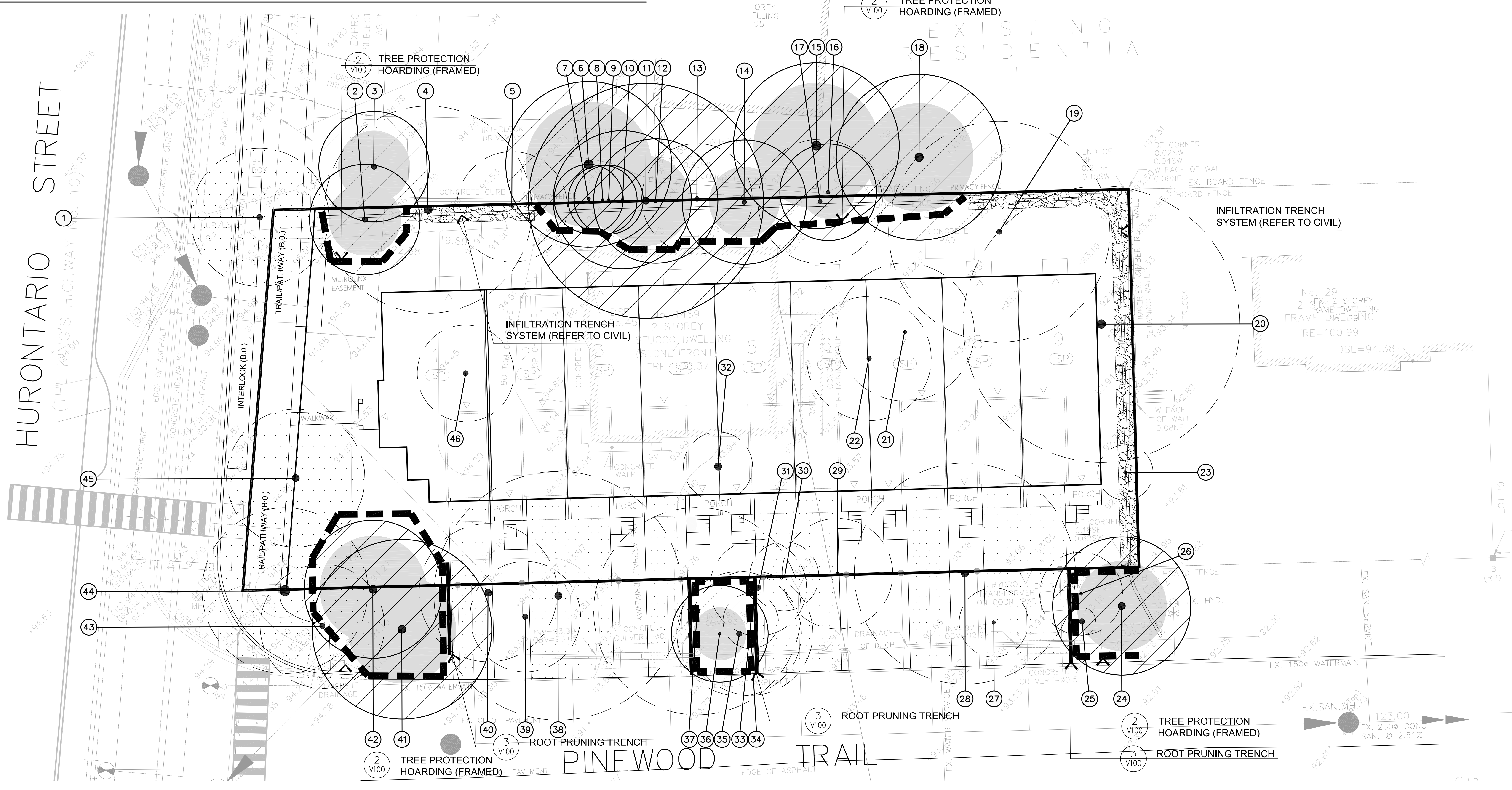


GENERAL NOTES

- VERIFY ALL DIMENSIONS.
- DO NOT SCALE DRAWINGS.
- REPORT ANY DISCREPANCIES, DISCOVERED ERRORS, OR OMISSIONS TO THE LANDSCAPE ARCHITECT BEFORE PROCEEDING.
- IT IS ADVISED THAT CONTRACTORS CONTACT THE LANDSCAPE ARCHITECT PRIOR TO CONSTRUCTION TO ENSURE THE USE OF THE LATEST REVISED DRAWINGS.
- DRAWINGS AND SPECIFICATIONS ARE THE PROPERTY OF THE LANDSCAPE ARCHITECT.



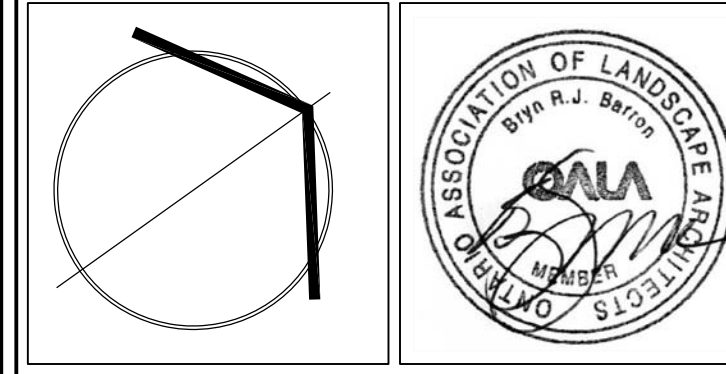
1 V100 EXISTING TREE INVENTORY



Matthew C. Geisler
 MATTHEW C. GEISLER
 International Society of Arboriculture
 Certified Arborist #041144
 Date: SEPT 18, 2024

No.	DATE	REVISION	BY
3	SEPT 18, 2024	ISSUED FOR RESUBMISSION	B.B.
2	AUG 14, 2024	ISSUED FOR SUBMISSION	B.B.
1	AUG 26, 2022	ISSUED FOR SUBMISSION	M.G.

It is the responsibility of the Contractor and/or Owner to ensure that the drawings with the latest revisions are used for construction.



SBK 5770 HURONTARIO STREET, SUITE 320
 MISSISSAUGA, ONTARIO, L5R 3G5
 T: 416.695.4949 F: 905.712.3101
 WWW.STRYBOS.COM

STRYBOS BARRON KING
 LANDSCAPE ARCHITECTURE

PROJECT:
PROPOSED TOWNHOUSE DEVELOPMENT
 1489 Hurontario Street, Mississauga

DRAWING TITLE:
EXISTING TREE INVENTORY AND PRESERVATION PLAN

SCALE: 1 : 125	PROJECT No. 21-5770
DATE: MAY 2021	DRAWING No. V100
DRAWN BY: SS	
CHECKED BY: MG	