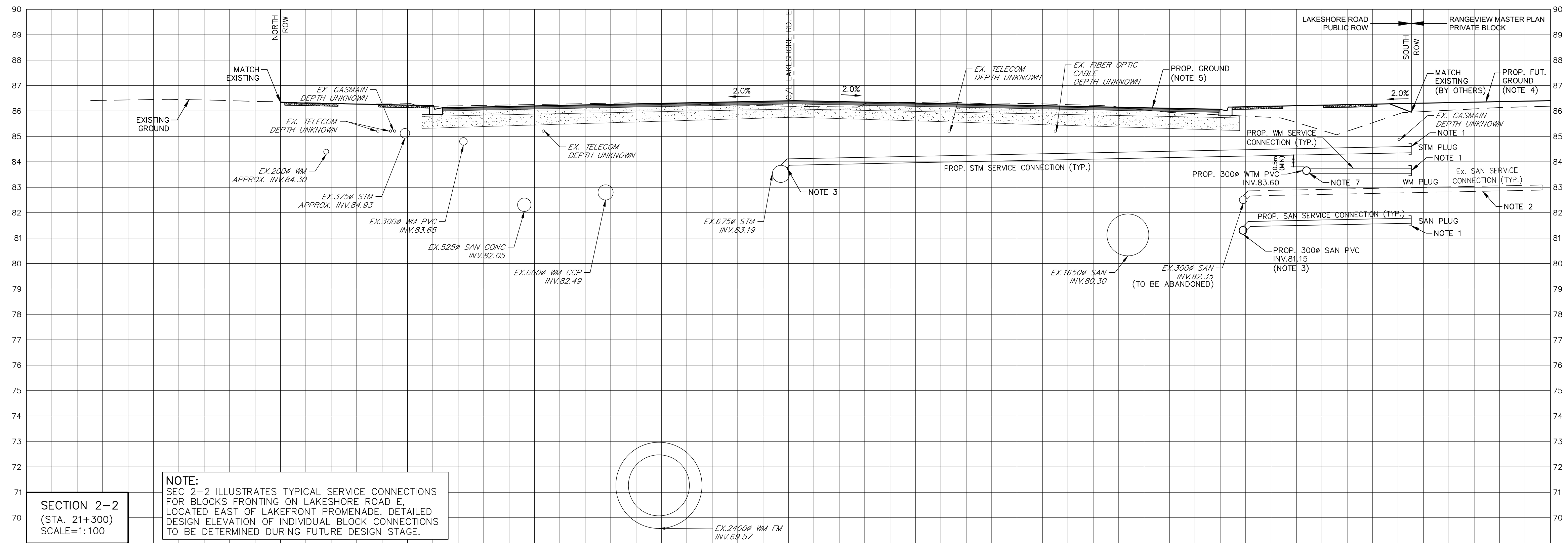


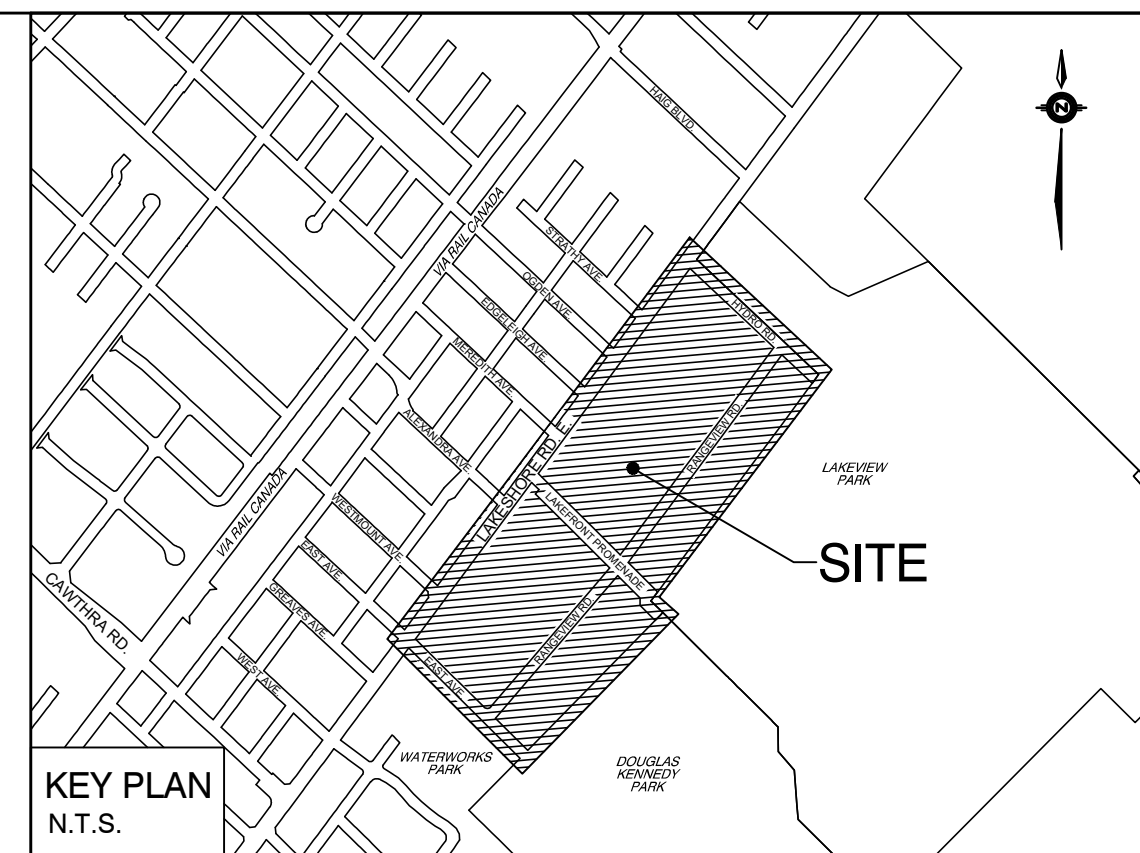
SECTION 1-1
(STA. 20+880)
SCALE=1:100

NOTE:
SEC 1-1 ILLUSTRATES TYPICAL SERVICE CONNECTIONS FOR BLOCKS FRONTING ON LAKESHORE ROAD E, LOCATED WEST OF LAKEFRONT PROMENADE. DETAILED DESIGN ELEVATION OF INDIVIDUAL BLOCK CONNECTIONS TO BE DETERMINED DURING FUTURE DESIGN STAGE.



SECTION 2-2
(STA. 21+300)
SCALE=1:100

NOTE:
SEC 2-2 ILLUSTRATES TYPICAL SERVICE CONNECTIONS FOR BLOCKS FRONTING ON LAKESHORE ROAD E, LOCATED EAST OF LAKEFRONT PROMENADE. DETAILED DESIGN ELEVATION OF INDIVIDUAL BLOCK CONNECTIONS TO BE DETERMINED DURING FUTURE DESIGN STAGE.



- NOTES:
- PROPOSED SERVICE CONNECTIONS TO BE PLUGGED AT PROPERTY LINE. WHERE EXISTING SERVICE CONNECTIONS ARE BEING REPLACED, CONTROL MAINTENANCE HOLES TO BE INSTALLED PER CITY & REGION STANDARDS.
 - EXISTING SERVICE CONNECTIONS TO BE DECOMMISSIONED UPON INSTALLATION OF PROPOSED LOCAL COLLECTOR SEWERS ON LAKESHORE, AND NEW SERVICE CONNECTIONS.
 - PROPOSED LOCAL COLLECTOR SEWERS ON LAKESHORE TO REPLACE EXISTING LOCAL SEWERS SERVING EXISTING BLOCKS FRONTING LAKESHORE RD. E, WHERE POSSIBLE. DESIGN OF PROPOSED LOCAL COLLECTOR SEWERS TO BE COORDINATED WITH CITY AND REGION TO ENSURE ACCEPTABLE ALIGNMENT. PROPOSED LOCAL SEWERS AND SERVICE CONNECTIONS TO BE INSTALLED UTILIZING TRENCH BOX AND UNSHRINKABLE FILL, PER TYPICAL CONSTRUCTION STANDARDS FOR WORK WITHIN MUNICIPAL ROW.
 - PROPOSED FUTURE GRADE ON PRIVATE BLOCKS TO BE DETERMINED THROUGH FUTURE REDEVELOPMENT APPLICATIONS.
 - PROPOSED GRADE SHOWN ON LAKESHORE RD. EAST IS PER CURRENT BRT IMPROVEMENTS DESIGN BY CITY OF MISSISSAUGA.
 - EXISTING SERVICES AND UTILITIES WITHIN LAKESHORE RD. EAST ARE SHOWN PER LATEST RECORD DRAWINGS AND LIMITED SITE INVESTIGATION.
 - LOCAL WATERMAIN IS PROPOSED ALONG SOUTH BOULEVARD OF LAKESHORE ROAD EAST FOR RECONNECTION OF WATER SERVICE LINES OF BLOCKS FRONTING LAKESHORE. DESIGN OF PROPOSED LOCAL WATERMAIN TO BE COORDINATED WITH CITY AND REGION TO ENSURE ACCEPTABLE ALIGNMENT.

- NOTES:
- FOR LOCATION OF SECTION 1 AND 2, REFER TO DWG. INT-GP-1-2 & GP-1-2

No.	Date	Issued for
2.	07/02/2024	REISSUED FOR DMP/OPA SUBMISSION
1.	05/28/2024	ISSUED FOR OPA SUBMISSION

BENCHMARK NOTE

APPROVED AS TO FORM IN RELIANCE UPON THE PROFESSIONAL SKILL AND ABILITY OF SCHAEFFERS CONSULTING ENGINEERS AS TO DESIGN AND SPECIFICATION

DIRECTOR OF DEVELOPMENT ENGINEERING DATE

RANGEVIEW ESTATES PRECINCT AREA
CITY OF MISSISSAUGA

SCHAEFFERS
CONSULTING ENGINEERS

SCHAEFFER & ASSOCIATES LTD.

6 Rotrose Drive, Concord,
Ontario L4K 4R3
Tel: (905) 738-6100
Fax: (905) 738-6875
E-mail:
design@schaeffers.com



SECTIONS

DRAWN BY: M.P.	DESIGNED BY: H.H.T.	CHECKED BY: H.H.T.
SCALE: AS SHOWN	DATE: MAY 2024	
PROJECT No. 2022-4938	DRAWING No. SEC-1	