

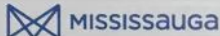
PROHIBITED ACTIVITIES WITHIN TREE PROTECTION ZONES:

Except where authorized by Mississauga Forestry the following activities, including, but not limited to, are prohibited within the TPZ:

- Construction activities
- Storage of materials
- Storage of equipment
- Excavation
- Grade changes
- Cutting, tearing, breaking tree's roots, branches and trunk
- Dumping
- Parking
- Stringing Cables/Wires

TREE SIGNAGE:

Tree signage as shown below to be attached to all sides of tree hoarding. Tree signs to be minimum 40.64 cm x 60.96 cm and made of waterproof material:




Tree Protection Zone (TPZ)

BY-LAW #

No construction activities, including grade changes, storage of materials or equipment, dumping, excavation is permitted within this TPZ

This tree protection barrier must remain in good condition and must not be removed or altered without the authorization of City of Mississauga, Urban Forestry.

Concerns or inquires regarding this TPZ can be directed to:



Dial 3-1-1

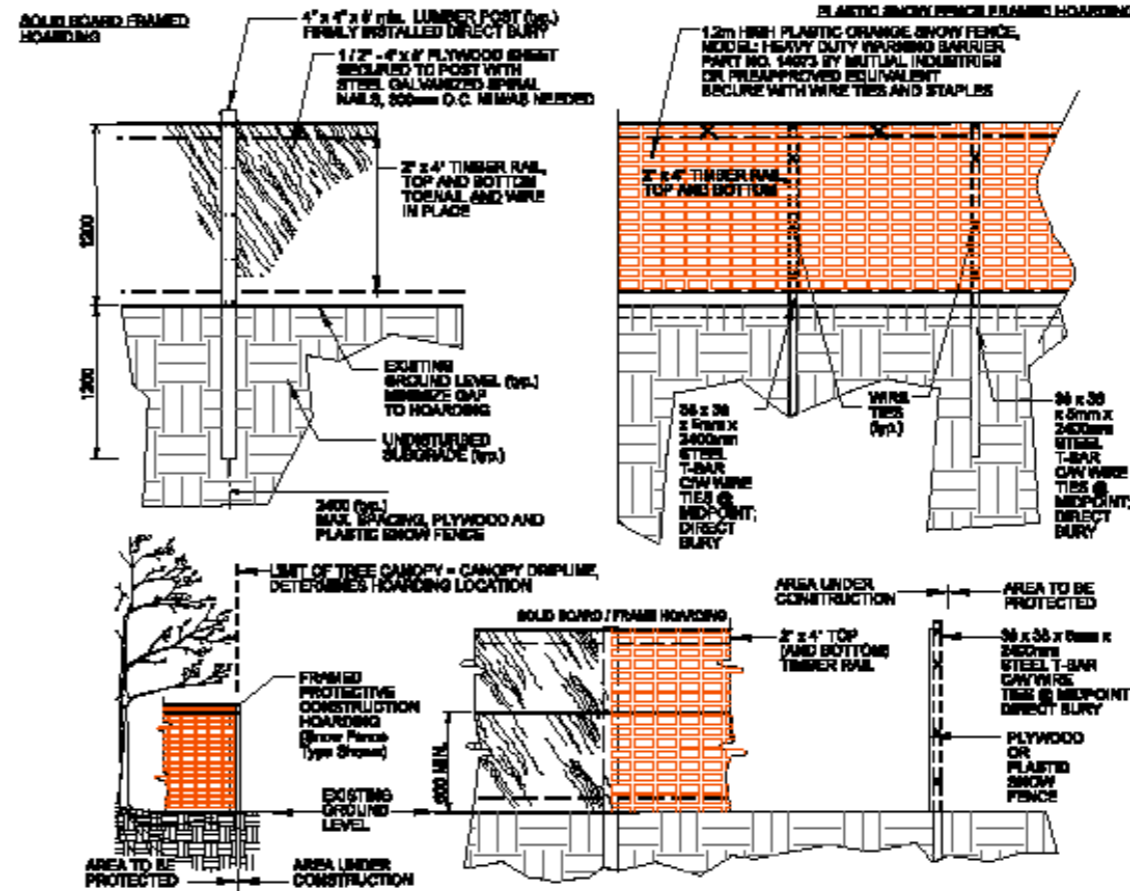
905-615-4311
outside city limits

TREE HOARDING:

02830-6

**Hoarding
Framed Protective Construction Hoarding
Solid Board- Plastic Snow Fence**

NOTE:
TO BE USED AS A GUIDELINE ONLY.
NOT TO SCALE. REMOVE CITY TITLE BLOCK
AND REDRAW TO REPRESENT SITE SPECIFIC
CONDITIONS. ALL SITE SPECIFIC CONDITIONS
ARE TO BE CONFIRMED BY THE PROJECT
CONSULTANT.



- NOTES:**
1. HOARDING LOCATION AS PER DRAWINGS. HOARDING INSTALLATIONS ARE TO INCLUDE WOVEN GEOTEXTILE FABRIC FOR SEDIMENT CONTROL.
 2. NO MOBILIZATION OR CONSTRUCTION WORK TO OCCUR UNTIL HOARDING HAS BEEN INSPECTED AND APPROVED BY COMMUNITY SERVICES PROJECT MANAGER (CSPM). CONTRACTOR TO ARRANGE FOR A HOARDING INSPECTION WITH (CSPM), 48 HOUR NOTICE REQUIRED.
 3. HOARDING TO BE SUPPLIED, INSTALLED AND MAINTAINED BY THE CONTRACTOR THROUGH ALL PHASES OF WORK ON SITE.
 4. THE CONTRACTOR IS TO REMOVE AND DISPOSE THE HOARDING OFF SITE WHEN DIRECTED BY THE (CSPM).
 5. ALL WOOD PRODUCTS TO BE NEW AND LUMBER KILN DRIED SPF.
 6. ALL FASTENERS TO BE NEW GALVANIZED STEEL AND SECURELY INSTALLED. WIRE TIES MIN 3/16" DIA. GALVANIZED STEEL.
 7. DO NOT ALLOW WATER TO COLLECT AND/OR POOL ON EITHER SIDE OF THE HOARDING.
 8. WHEN INSTALLING DIRECT BURY TIMBER POSTS AND T-BARS, TAKE CARE TO AVOID VISIBLE AND ASCERTAINABLE TREE ROOTS.
 9. PLACE HOARDING AT LIMIT OF TREE CANOPY DRIP LINE OR BEYOND (I.E. FURTHER AWAY FROM TRUNK OF TREE).
 10. HOARDED OFF AREA TO REMAIN UNDISTURBED. NO STOCKPILING, STAGING OR MOVEMENT OF VEHICLES TO OCCUR WITHIN PROTECTED AREA.
 11. FOR PROTECTION OF TREES AND ROOT SYSTEMS, CONTRACTOR MAY BE REQUIRED TO PROVIDE WATERING, MULCHING, FERTILIZING, PRUNING OR OTHER ACTIVITIES TO ENSURE THE HEALTH OF THE TREES.
 12. ALL MEASUREMENTS IN MILLIMETRES UNLESS NOTED OTHERWISE (E.G. DIMENSIONAL LUMBER).
 13. CONTRACTOR RESPONSIBLE FOR LOCATES

Detail: 02830-6 ORIGINAL DATE: Mar 08/18 REVISION DATE: Mar 08/18  **N.T.S.**

GENERAL NOTES:

This plan is to be read in conjunction with the following documents:

1. Arborist Report prepared by Ontree.
2. Drawing "Tree Assessment and Preservation Plan", Sheet TAPP-1.
3. Drawing "Tree Replacement Plan", Sheet TRP.

| | |
|-----|-----------------|
| | |
| | |
| | |
| 1 | AUGUST 23, 2023 |
| NO. | DATE |



Ontree
22 Passmore
Avenue
Toronto, ON
T: 416-412-2100

Certified Arborist:
Jody Steiger, ISA #ON-0338A, TRAQ

Signature: 

| |
|--|
| TITLE: TREE ASSESSMENT & PRESERVATION PLAN |
| SITE: 120 FAIRVIEW ROAD WEST |
| SCALE: NTS |
| SHEET: TAPP-2 |