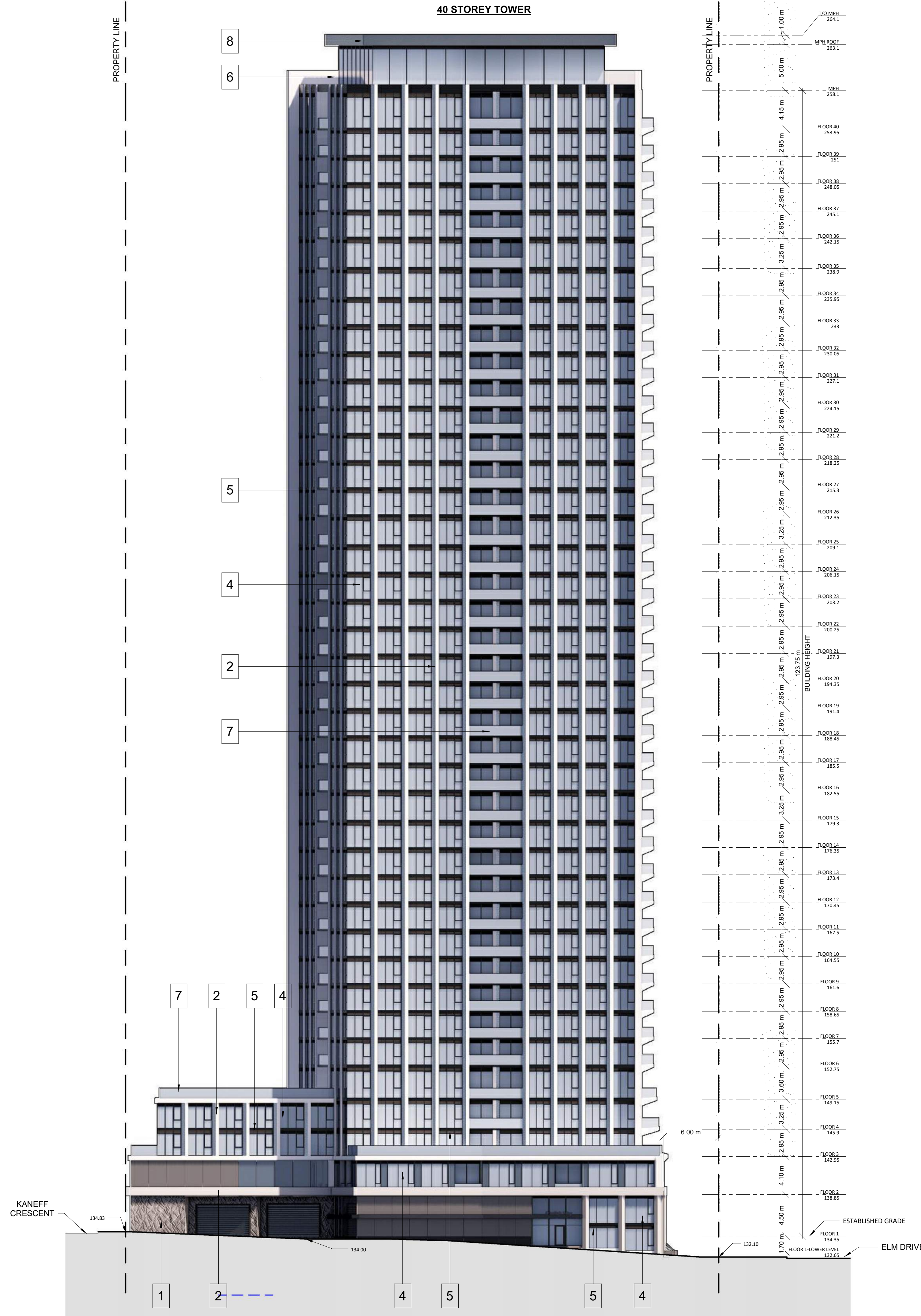


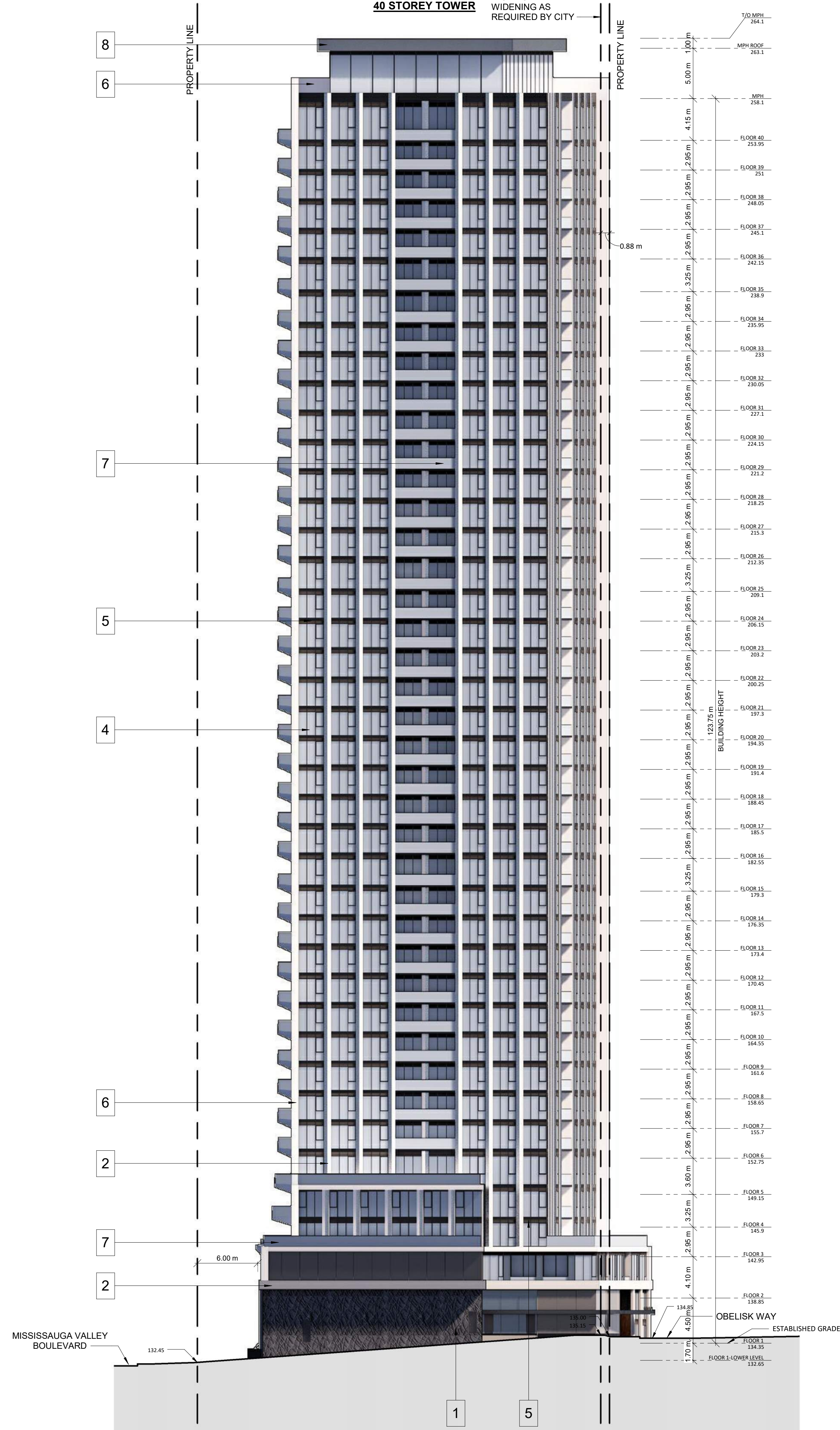
40 STOREY TOWER

40 STOREY TOWER

RIGHT OF WAY
WIDENING AS
REQUIRED BY CITY



1 SOUTH ELEVATION
ASB 1:250



2 WEST ELEVATION
ASB 1:250

TURNER FLEISCHER

Turner Fleischer Architects Inc.
67 Leasmill Road
Toronto, ON, M3B 2T8
T 416 425 2222
turnerfleischer.com

This drawing, as an instrument of service, is provided by and is the property of Turner Fleischer Architects Inc. The contractor must verify and accept responsibility for all dimensions and conditions on site and must notify Turner Fleischer Architects Inc. of any variations from the approved information. This drawing is not to be used for any other purpose without the written consent of Turner Fleischer Architects Inc. The architect is not responsible for the accuracy of survey, structural, mechanical, electrical, etc. information shown on this drawing. Refer to the appropriate consultant's drawings before proceeding with the work. Construction must conform to all applicable codes and requirements of authorities having jurisdiction. The contractor working from drawings not specifically marked 'For Contractor' must assume full responsibility and bear costs for any corrections or damages resulting from his work.

MATERIAL LEGEND

- 1 - PRECAST CONCRETE WITH PATTERN (GREY)
- 2 - PRECAST CONCRETE (WHITE/GREY)
- 3 - METAL PANEL (WHITE/LIGHT GREY)
- 4 - CLEAR VISION GLASS
- 5 - SPANDREL GLASS (DARK GREY)
- 6 - METAL PANEL OR PRECAST (WHITE/LIGHT GREY)
- 7 - GLASS RAILING (TRANSLUCENT)
- 8 - METAL PANEL (DARK GREY)

#	DATE	DESCRIPTION	BY
4	2023-06-08	Issued for Rezoning Submission	TCH
3	2022-10-20	Issued for Rezoning	DRO
2	2022-04-22	Issued for SPA	TCH
1	2020-05-22	Issued for Rezoning Submission #1	LSW

PROJECT
PROPOSED RESIDENTIAL DEVELOPMENT
Kaneff Crescent and Mississauga Valley Boulevard,
Mississauga, ON
City File NO. OZ 20/070

BUILDING ELEVATIONS

PROJECT NO. 16.286SPA
PROJECT DATE 2018-04-20
DRAWN BY DRO
CHECKED BY RMM
SCALE 1:250

DRAWING NO. **A302** REV. **4**