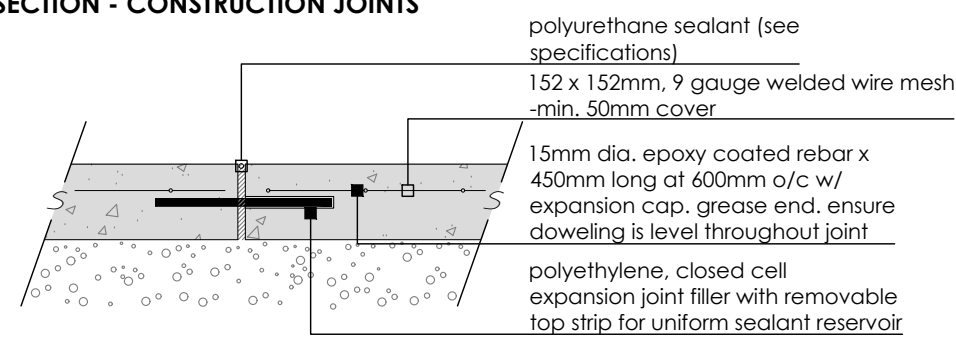
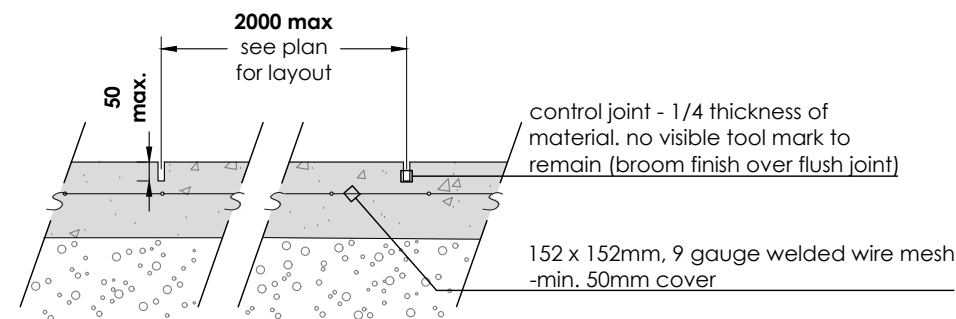


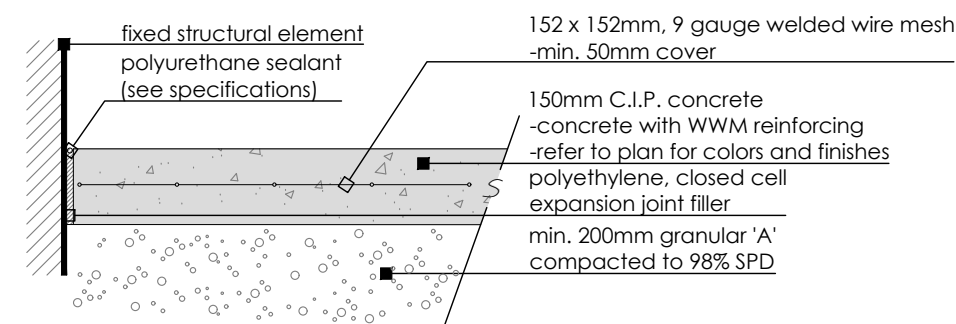
SECTION - CONSTRUCTION JOINTS



SECTION - SAWCUT CONSTRUCTION JOINTS



SECTION - ISOLATION JOINT AT FIXED ELEMENTS



GENERAL CONCRETE NOTES:

- Do concrete materials and methods of concrete construction in accordance with OPSS 351.
- Contractor to verify accuracy of concrete details and reinforcement prior to installation.
- Provide following materials:
 - cement: to OPSS 905 and 1350;
 - aggregates for concrete: OPSS 905 and 1350;
 - reinforcing steel if detailed: OPSS 905 and 1350;
 - concrete form snap ties with plastic cones & breakback to be used. Surface patch as required;
 - form stripping agent: colorless mineral oil, free of kerosene;
 - latex bonding agent: Sikabond, Sikamix, or approved equal;
 - form lumber and plywood: clean, free of loose knots, splits and with repairs made smoothly and securely;
 - joint fillers: preformed, non-extruding, resilient bituminous type;
 - admixtures: to be used only when approved by Engineer;
 - aggregates for base: Granular 'A' to OPSS form 1010;
 - water: water used in mixing or curing shall be reasonably clean and free of oil, salt, acid, alkali, sugar, vegetable matter or other substance injurious to the finished project and shall meet the requirement of OPSS.
- Concrete mix to provide compressive strength of 28MPa at 28 days, entrained air of 6% to 1% and slump at point of discharge of 60mm for curbs and footings.
- Granular base to be compacted to 95% maximum dry density to OPSS and to depths as detailed.
- Pour concrete in favourable weather conditions.
- Apply surface finish as detailed.
- Repair defective areas while concrete is still plastic, or remove defective work and replace with new concrete.
- Concrete areas will not be accepted if:
 - fails to meet requirements of this specification;
 - contains excessive honeycombing or embedded debris;
 - 28 days average strength in any defined area is less than 95% of specified minimum strength;
 - surface irregularities;
 - damaged or chipped;
 - poor workmanship.
- It is the contractor's responsibility to maintain and protect concrete areas until time of final acceptance.

NOTES FOR JOINING:

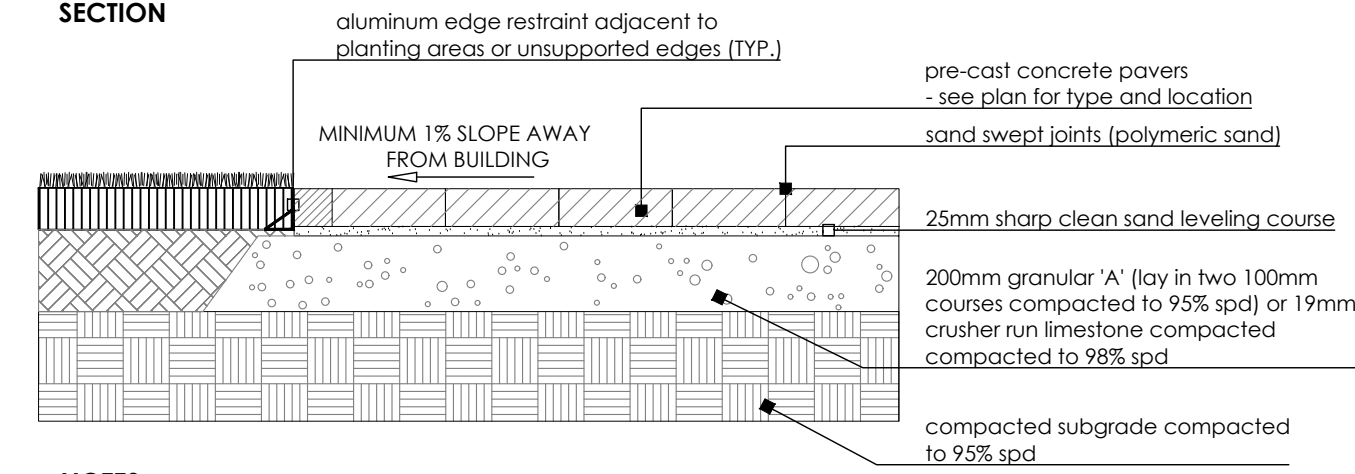
- Joint pattern as per layout plan unless otherwise noted;
- All edges to be hand tooled, using an edging tool with a 6mm radius. No visible tool mark to remain (broom finish over flush joint);
- Saw cut control joints to 37.5 mm depth (1/4 depth of material) @ max 2000mm each way spacing unless otherwise indicated on plan;
- Isolation joints at all fixed objects abutted by concrete (e.g. walls, curbs, light poles etc). Sealant colour to complement paving surface.

CAST-IN-PLACE CONCRETE

N.T.S.

1
L-3

SECTION



NOTES:

- Paver types are as follows (or approved equal):

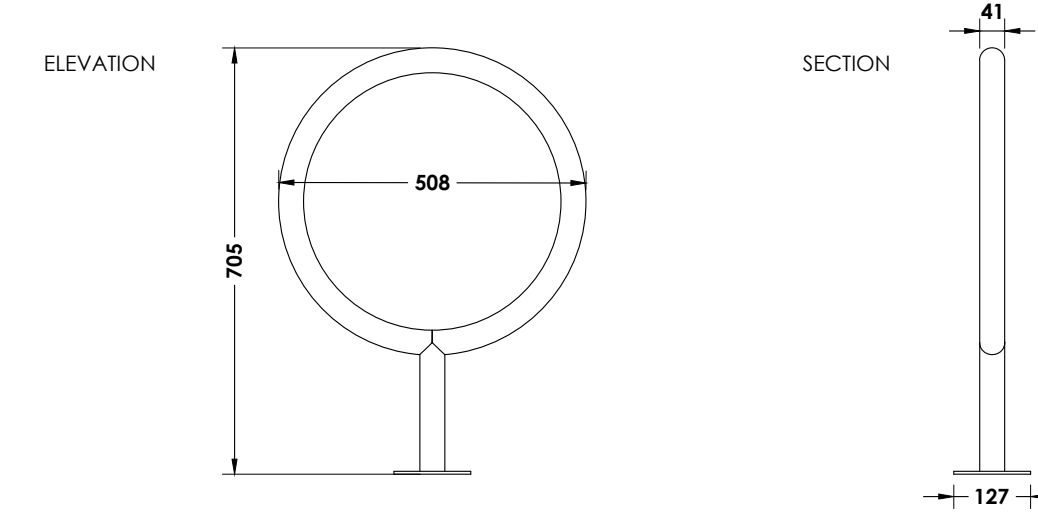
TYPE	DESCRIPTION	PATTERN	SIZE	COLOUR
'A'	Industria Paver 600 Series by Techo-bloc	Linear Pattern 25	600 x 100	Onyx Black
'B'	Industria Paver 600 Series by Techo-bloc	Linear Pattern 25	600 x 100	Greyed Nickel

- Unit pavers are 100mm thick. Contractor to provide samples on site to be approved by Landscape Architect and/or Owner.

2
L-3

PRECAST CONCRETE PAVERS

N.T.S.



Maglin Bicycle Rack - MBR 150-S

COLOUR: SILVER 14 (GLOSS)
UNITS: 12
CAPACITY: 2 Bikes

SUPPLIED BY: Maglin Furniture Systems Ltd.
Woodstock, ON
T: 1.800.714.5506
E: sales@maglin.com

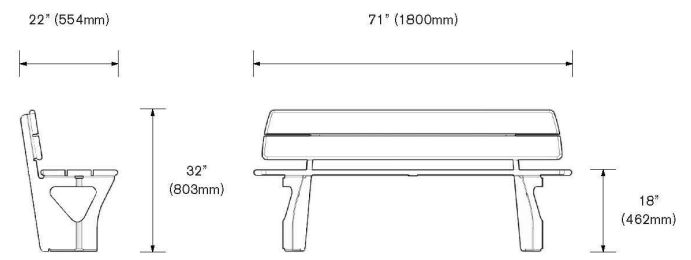
3
L-3

BIKE RACK BY MAGLIN (OR APPROVED EQUAL)

N.T.S.

Array Backed Bench

Product Code - ARF1
Backed Bench
Weight:
○ 88lbs (40kg) - 5052 Aluminum
○ 116lbs (53kg) - 304 Stainless Steel



Materials
Made with Powder Coated 5052 Aluminum or 304 Stainless Steel

- 5052 Aluminum
- 304 Stainless Steel
- Hardwood Timber

Standard Powder Coat

- Matte Black
- Fluorin
- Gloss White
- Metallc Silver
- Smoky Bronze
- Suede Bronze

Custom Powder Coat

RAL

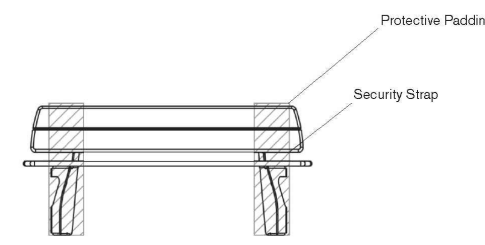
Bench Specifications

Delivery Loading & Unloading Detail

- Product is supplied loose and freestanding, or on skids/pallets if required.
- Product is secured with appropriate padding for protection during transit.
- Product can be unloaded manually (Recommended 2 person lifting per product).
- All handling suggestions are to be used as a guide only. It is the full responsibility of the installing party to ensure the appropriate lifting methods are practiced.

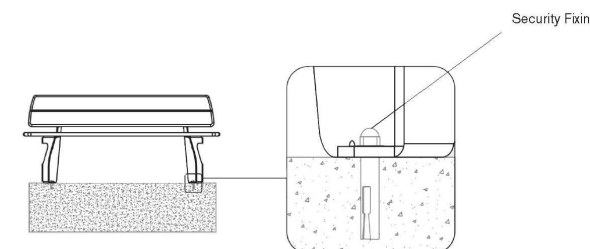
Delivery Loading & Unloading Detail

Recommended on site Delivery Detail



Installation Detail

Recommended on site Installation Detail



Installation Detail

- Use product to mark and drill fixings locations in slab/footing
- Install product using masonry or chemical anchors (supplied by others)
- Secure product to anchors using security fixings (supplied by others)
- 4 x 3/8" or (M10) masonry anchors with Security nuts (supplied by others)

Green Theory

G-T
greentheory.com

Date: 01/13/2023
Manufacturer: Green Theory USA
Sales Representative: Street + Saben

Green Theory reserves the right to make technical modifications to any product without notice. Contact your distributor for the most current information. The manufacturer is not responsible for any damage to property or injury to persons or animals caused by the use of this product. ©2023 Green Theory Design

Designed by STREET + SABEN

GREEN THEORY 'ARRAY' BENCH IN METALLIC SILVER

N.T.S.

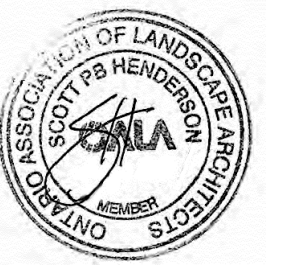
4
L-3

NOT FOR CONSTRUCTION
ISSUED FOR REVIEW & COMMENTS ONLY

REVISIONS/ SUBMISSIONS

#	DATE	DESCRIPTION
1	2023-07-21	Issued for SPA #1

STAMP



CLIENT
Kaneff Group
MUNICIPALITY
Mississauga, ON

PROJECT
Kaneff Crescent Tower
3575 Kaneff Crescent

MUNICIPAL FILE NUMBER

SHEET
Details

L-3

adesso design inc.
landscape architecture



69 John Street South, Suite 250
Hamilton, ON L8N 2B9
t. 905.526.8876
www.adessodesigninc.ca