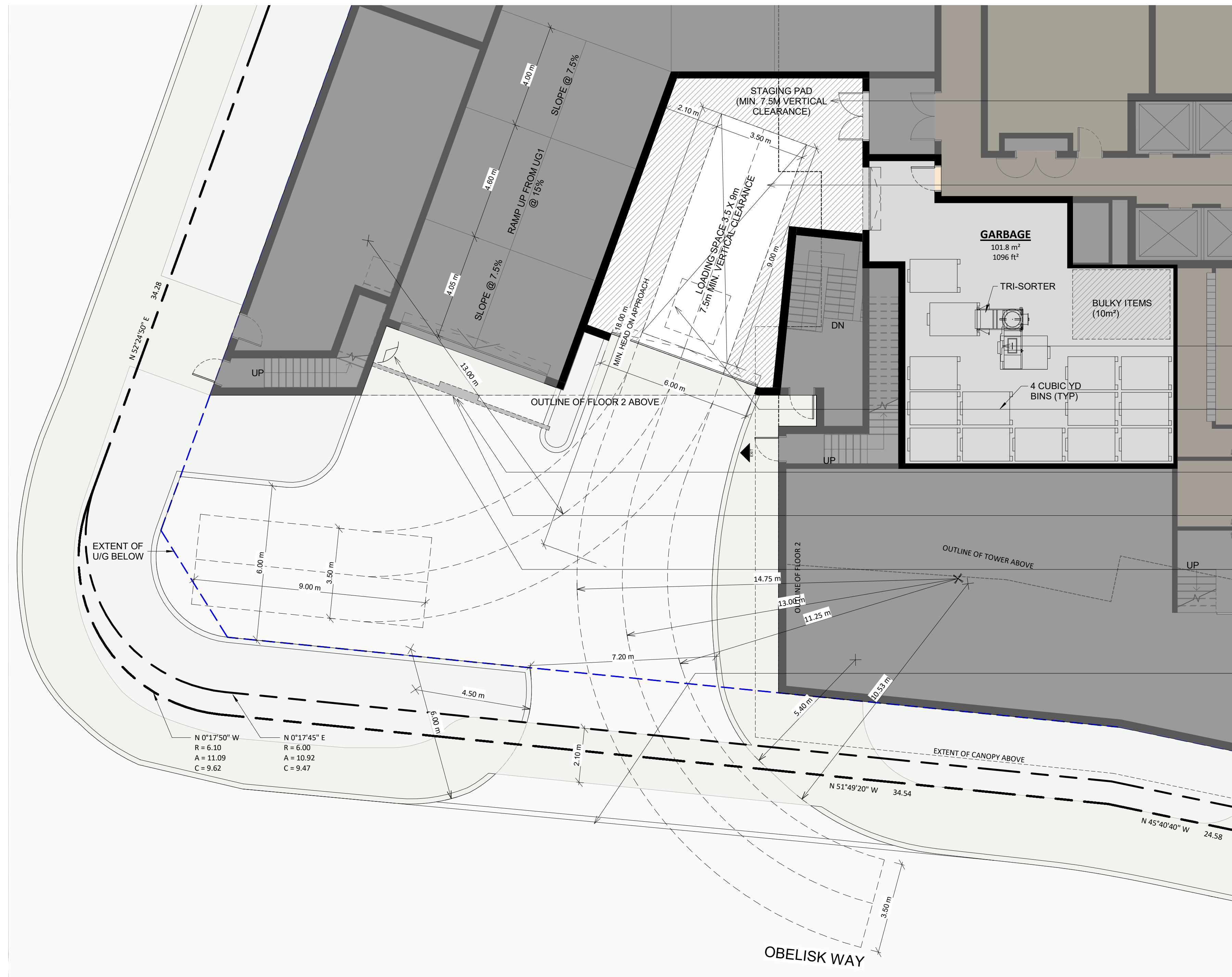


This drawing, as an instrument of service, is provided by and is the property of Turner Fleischer Architects Inc. The contractor must verify and accept responsibility for all dimensions and conditions on site and must notify Turner Fleischer Architects Inc. of any variations from the specified information. This drawing is not to be scaled. The architect is not responsible for the accuracy of survey, structural, mechanical, electrical, etc. information shown on this drawing. Refer to the appropriate consultant's drawings before proceeding with the work. Construction must conform to all applicable codes and requirements of authorities having jurisdiction. The contractor working from drawings not specifically marked "For Contractor" must assume full responsibility and bear costs for any corrections or damages resulting from his work.

LEGEND

-  PRIMARY RESIDENTIAL ENTRANCE
-  SECONDARY RESIDENTIAL ENTRANCE
-  RETAIL ENTRANCE
-  EXIT
-  EX.FH EXISTING FIRE HYDRANT
-  SIAMESE CONNECTION
-  WALL/COLUMN-MOUNTED CONVEX MIRRORS



STAGING AREA IN FRONT OF LOADING SPACE. CONCRETE PAD AS PER CITY REQUIREMENT

LOADING SPACE - 9.0m x 3.5m WITH 7.5m VERTICAL CLEARANCE

RESIDENTIAL GARBAGE ROOM WITH TRI-SORTER AND GARBAGE COMPACTOR

VEHICLE LOOP DETECTOR

FLASHING LIGHTS: TO BE ACTIVATED BY LOOP DETECTOR IN LOADING AREA

OVERHEAD SIGN: CAUTION: TRUCK MANOUEVERING AHEAD

PROPOSED LOCATION OF CONVEX MIRRORS

DEPRESSED CURB AS PER OPSD 350.010 STANDARDS AT VEHICULAR ACCESS ENTRANCE

1 SPA-FLOOR 1 - SOLID WASTE MANAGEMENT
A004 1:100

RESIDENTIAL SOLID WASTE MANAGEMENT NOTES:

SOLID WASTE MANAGEMENT REQUIREMENTS AS PER THE PEEL WASTE COLLECTION DESIGN STANDARDS MANUAL:

PEEL WASTE MANAGEMENT REQUIRES INTERNAL STORAGE AREAS TO BE LARGE ENOUGH TO CONTAIN ALL THE REQUIRED NUMBER OF FRONT-END GARBAGE BINS AND RECYCLING IN ADDITION TO A SPACE (A MINIMUM OF 10 M2) FOR THE STORAGE OF BULKY ITEMS.

THE NUMBER OF FRONT-END BINS FOR GARBAGE IS CALCULATED PER TABLE 4, THE NUMBER OF FRONT-END BINS FOR RECYCLING IS CALCULATED PER TABLE 5 OF THE WASTE COLLECTION DESIGN STANDARDS MANUAL. EACH 4 CUBIC YARD BIN CONTAINING COMPACTED WASTE CAN ACCOMMODATE 72 UNITS. FOR RECYCLABLE MATERIALS, EACH 4 CUBIC YARD BINS CAN ACCOMMODATE 60 UNITS.

THE TURNING RADIUS FROM THE CENTRE LINE HAS TO BE A MINIMUM OF 13 METRES ON ALL TURNS FOR THE WASTE COLLECTION VEHICLE WITH THE MAXIMUM GRADE CHANGE PERMITTED ALONG THE ACCESS ROUTE BEING 8%. THE COLLECTION AREA IS TO BE DESIGNED SUCH THAT IT WILL CONSIST OF A LEVEL (+/-2%) CONCRETE SURFACE.

TRAINED ON-SITE PERSONEL MUST MANEUVER COLLECTION BINS IN FRONT OF COLLECTION VEHICLE DURING COLLECTION DAY.

TRAINED ON-SITE PERSONNEL MUST ASSIST THE COLLECTION VEHICLE IN REVERSING OUT OF THE LOADING SPACE ON COLLECTION DAY.

THE FOLLOWING MINIMUM CLEARANCES ARE TO BE PROVIDED FOR THE WASTE COLLECTION VEHICLE:

- IN THE COLLECTION AREA AN OVERHEAD CLEARANCE OF 7.5 METRES FROM OBSTRUCTIONS SUCH AS BALCONIES, WIRES AND TREES MUST BE PROVIDED.
- OUTSIDE OF THE COLLECTION AREA AN OVERHEAD CLEARANCE OF 4.4 METRES FROM OBSTRUCTIONS SUCH AS BALCONIES, WIRES AND TREES MUST BE PROVIDED.

RESIDENTIAL WASTE MANAGEMENT CALCULATIONS:

WASTE STORAGE ROOM SIZE AND NUMBER OF BINS REQUIRED:

PROPOSED BUILDING WITH 467 UNITS REQUIRES:

FOR COMPACTED GARBAGE:
7 FOUR-CUBIC YARD BINS FOR 467 UNITS

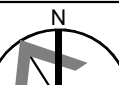
FOR RECYCLING:
8 FOUR-CUBIC YARD BINS FOR 467 UNITS

PROPOSED BUILDING REQUIRES A GARBAGE ROOM CAPABLE OF ACCOMMODATING: 7 BINS USED FOR SOLID WASTE, 6 BINS USED FOR RECYCLABLE MATERIALS AND 10m² FOR BULKY ITEMS.

4	2023-06-08	Issued for Rezoning Submission	TCH
3	2022-10-20	Issued for Rezoning	DRO
2	2022-04-22	Issued for SPA	TCH
1	2020-05-22	Issued for Rezoning Submission #1	LSW
#	DATE	DESCRIPTION	BY

PROJECT
PROPOSED RESIDENTIAL DEVELOPMENT
Kaneff Crescent and Mississauga Valley Boulevard,
Mississauga, ON
City File NO. OZ 20/070

DRAWING
RESIDENTIAL SOLID WASTE MANAGEMENT

PROJECT NO. 16.286SPA	
PROJECT DATE 2018-04-20	
DRAWN BY DRO	
CHECKED BY RMM	
SCALE 1:100	

DRAWING NO. **A004** REV. **4**