

TURNER FLEISCHER

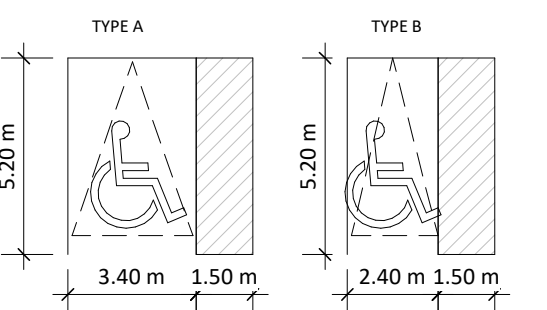
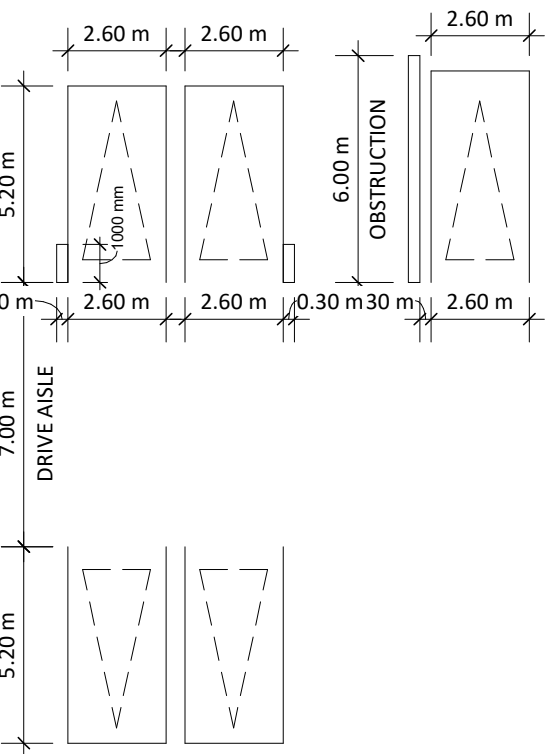
Turner Fleischer Architects Inc.
67 Lesmill Road
Toronto, ON, M3B 2T8
T 416 425 2222
turnerfleischer.com

This drawing, as an instrument of service, is provided by and is the property of Turner Fleischer Architects Inc. The contractor must verify and accept responsibility for all dimensions and conditions on site and must notify Turner Fleischer Architects Inc. of any variations from the approved information. This drawing is not to be scaled. The architect is not responsible for the accuracy of survey, structural, mechanical, electrical, etc. information shown on this drawing. Refer to the appropriate consultant's drawings before proceeding with the work. Construction must conform to all applicable codes and requirements of authorities having jurisdiction. The contractor working from drawings not specifically marked "For Contractor" must assume full responsibility and bear costs for any corrections or damages resulting from his work.

TYPICAL PARKING DIMENSIONS:

AISLE WIDTH: MIN 7m

TYPICAL PARKING SPACE:
MIN 2.6 x 5.2 x 2.0m HIGH



LEGEND

WALL/COLUMN-MOUNTED CONVEX MIRRORS

V VISITOR PARKING

4	2023-06-08	Issued for Rezoning Submission	TCH
3	2022-10-20	Issued for Rezoning	DRD
2	2022-04-22	Issued for SPA	TCH
1	2020-05-22	Issued for Rezoning Submission #1	LSV
#	DATE	DESCRIPTION	BY

PROPOSED RESIDENTIAL DEVELOPMENT

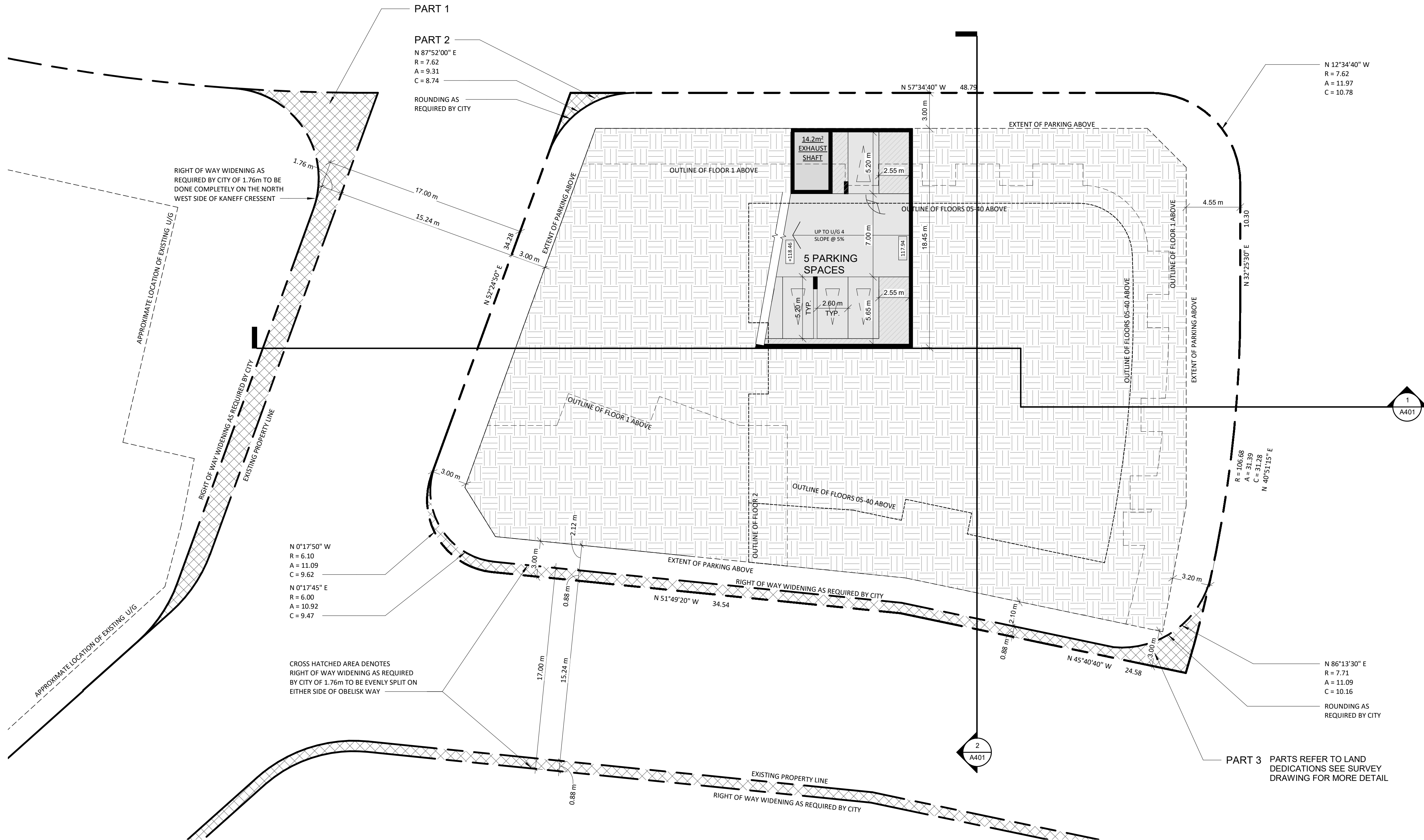
Kaneff Crescent and Mississauga Valley Boulevard,
Mississauga, ON
City File NO. OZ 20/070

DRAWING

UNDERGROUND LEVEL 4 LOWER

PROJECT NO.	16.286SPA
PROJECT DATE	2018-04-20
DRAWN BY	NMC
CHECKED BY	RMM
SCALE	1 : 200

DRAWING NO.	A101	REV.	4
-------------	------	------	---



N 0°17'50" W
R = 6.10
A = 11.09
C = 9.62

N 0°17'45" E
R = 6.00
A = 10.92
C = 9.47

CROSS-HATCHED AREA DENOTES
RIGHT OF WAY WIDENING AS REQUIRED
BY CITY OF 1.76m TO BE EVENLY SPLIT ON
EITHER SIDE OF OBELISK WAY

PART 3 PARTS REFER TO LAND
DEDICATIONS SEE SURVEY
DRAWING FOR MORE DETAIL