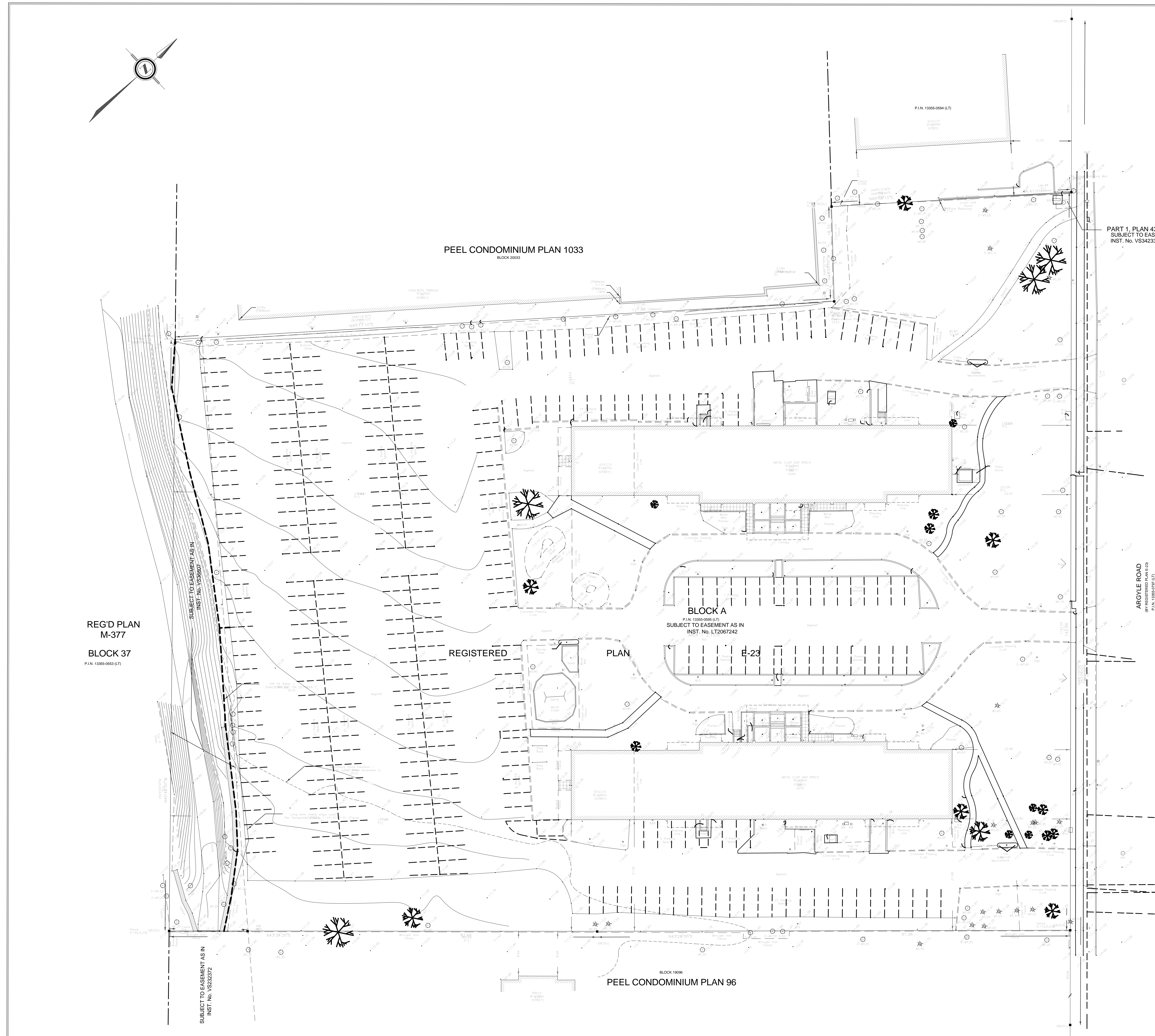
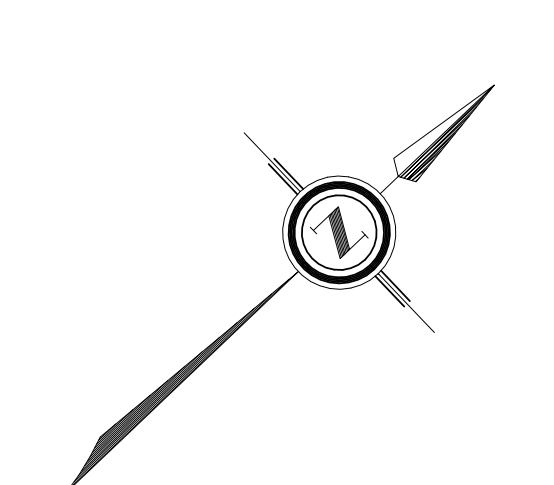


ISSUES	No.	DESCRIPTION	DATE
1	ISSUED FOR RE-ZONING/OPA	2020-08-31	
2	ISSUED FOR RE-ZONING/OPA	2022-04-08	
3	RE-ISSUE FOR ZONING/OPA	2022-08-11	



PLAN OF SURVEY WITH TOPOGRAPHY OF
PART OF BLOCK A
REGISTERED PLAN E-23
MISSISSAUGA
SCALE 1:300
2024

ONTARIO LAND SURVEYORS
2019

METRIC
ELEVATIONS ON THIS PLAN ARE IN METRIC UNITS AND ARE DERIVED FROM THE CITY OF MISSISSAUGA BENCHMARK, MSL, 1985.

ELEVATION
NOTE
ELEVATIONS ARE METRIC AND ARE DERIVED FROM THE CITY OF MISSISSAUGA BENCHMARK, MSL, 1985.
LOCATION
BENCHMARK IS SET HORIZONTALLY AT THE BASE OF A 750MM SQUARE
PNEUMATIC BRASS PLATE, THE NORTH-WEST CORNER OF BLINDS ROAD.
BENCHMARK ELEVATION = 115.617
MMSLS

BEARING
NOTE
BEARINGS SHOWN HEREIN ARE AZIMUTHIC AND ARE REFERRED TO BEARING OF ARGYLE ROAD AS SHOWN ON PLAN.
BEARING A BEARING OF 180°.

LEGEND

SYMBOL	DESCRIPTION
...	...

UPDATE
NOTE
REVISIONS MADE OCTOBER 2023 TO ADD CONTIGUOUS AND SHOW TOP OF BANK / SUBSIDY FOR THE DEVELOPER.
REGULATORY FLOOR ELEVATION ADDED NOVEMBER 24, 2023.
NEW FLOOR MARKS ADDED MARCH 20, 2024.

SURVEYOR'S CERTIFICATE

I, THE SURVEYOR, AND I HAVE CONDUCTED THIS SURVEY AND PLAN IN ACCORDANCE WITH THE SURVEY ACT AND THE REGULATIONS MADE UNDER THEREIN. THIS SURVEY WAS COMPLETED ON APRIL 1, 2024.

DATE: MAY 21, 2024

SPEIGHT, VAN NOSTRAND & GIBSON
DIMITRIE DIMITROV
7700 SHEPPARD AVENUE EAST, SUITE 200
TORONTO, ONTARIO, CANADA
TEL: 416-291-2900 FAX: 416-291-2901
E: INFO@SVAAG.COM

ASSOCIATION OF ONTARIO LAND SURVEYORS
2091082

REGD. PLAN M-377
MAY 21, 2024
MAY 21, 2024

