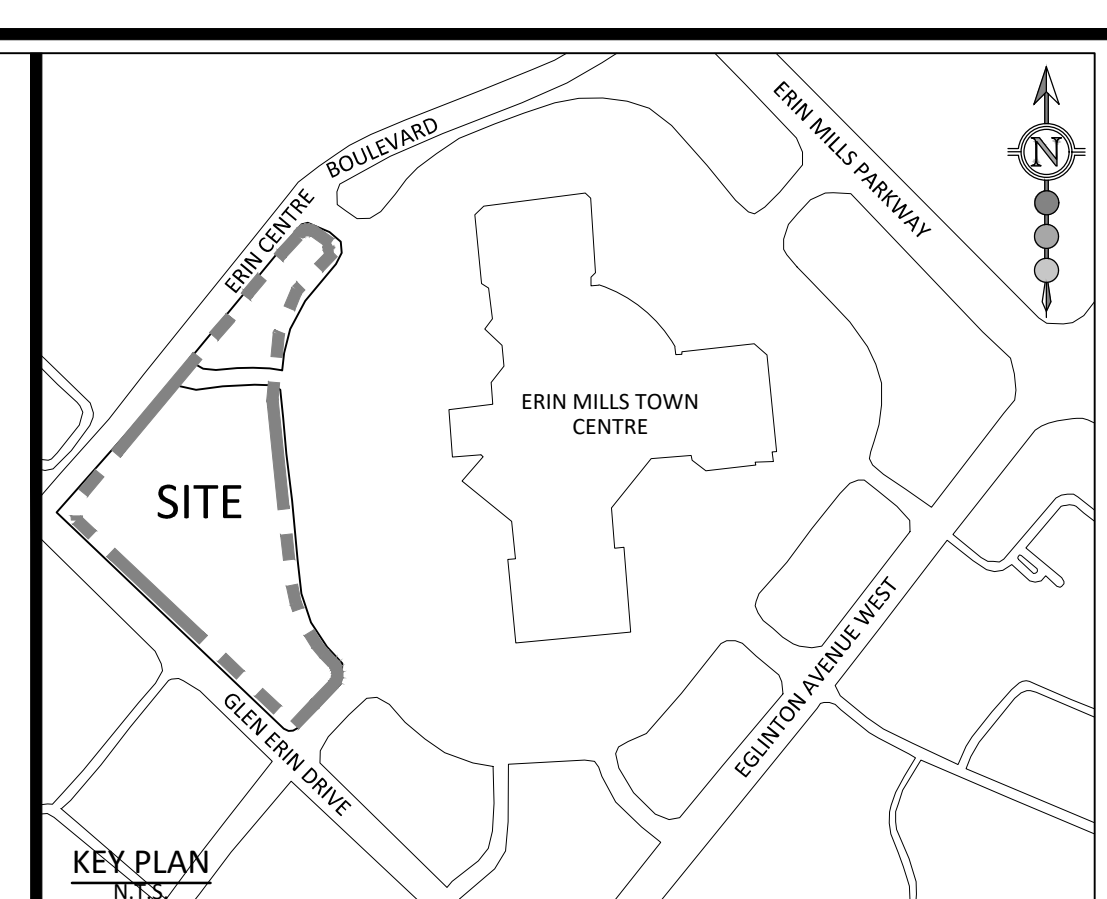
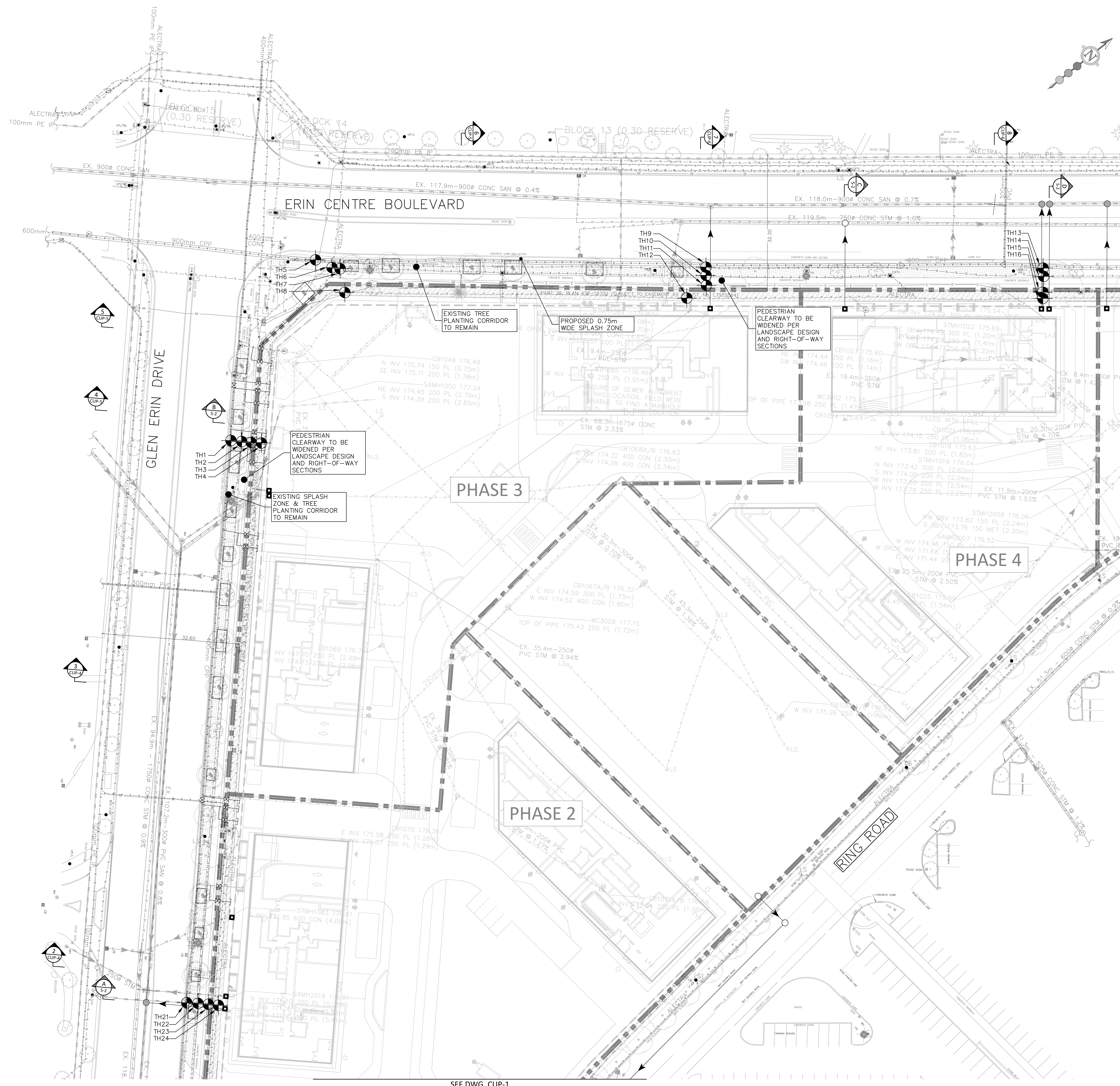


EXISTING COMMUNITY CENTRE

LOYSIUS GONZAGA SECONDARY SCHOOL



BENCHMARK: ELEV. 169.786
 ELEVATIONS SHOWN HEREON ARE GEODETIC AND ARE REFERENCED TO CITY OF MISSISSAUGA BENCHMARK NO. 966 LOCATED AT THE NORTHWEST CORNER OF ERIN MILLS PARKWAY AND ERIN CENTRE BOULEVARD, HAVING A PUBLISHED ELEVATION OF 169.786 METRES

LEGEND:

[Symbol]	LIMIT OF PROPERTY
[Symbol]	PHASE LIMIT
[Symbol]	SANITARY SEWER AND MAINTENANCE HOLE
[Symbol]	CAST-IN-PLACE SANITARY MAINTENANCE HOLE
[Symbol]	STORM SEWER AND MAINTENANCE HOLE
[Symbol]	CAST-IN-PLACE STORM MAINTENANCE HOLE
[Symbol]	WATERMAIN
[Symbol]	SINGLE CATCHBASIN
[Symbol]	DOUBLE CATCHBASIN
[Symbol]	WATER VALVE
[Symbol]	VALVE AND CHAMBER
[Symbol]	HYDRANT AND VALVE
[Symbol]	TEST HOLE AND LABEL
[Symbol]	TACTILE PLATE (OPSD 310.03B) AND CURB RAMP (OPSD 310.03C)
[Symbol]	EMBANKMENT (MAX 3:1 SLOPE UNLESS OTHERWISE NOTED)
[Symbol]	EXISTING SANITARY SEWER
[Symbol]	EXISTING ROGERS COAXIAL
[Symbol]	EXISTING BELL TELECOMMUNICATIONS
[Symbol]	EXISTING WATER
[Symbol]	EXISTING UNKNOWN CONDUCTIVE SIGNAL
[Symbol]	EXISTING HYDRO
[Symbol]	EXISTING TRAFFIC LIGHT
[Symbol]	EXISTING GAS
[Symbol]	EXISTING ROGERS FIBER OPTIC
[Symbol]	EXISTING STREETLIGHT
[Symbol]	EXISTING STORM SEWER
[Symbol]	EXISTING SANITARY SEWER TO BE REMOVED
[Symbol]	EXISTING ROGERS COAXIAL TO BE REMOVED
[Symbol]	EXISTING BELL TELECOMMUNICATIONS TO BE REMOVED
[Symbol]	EXISTING WATER TO BE REMOVED
[Symbol]	EXISTING UNKNOWN CONDUCTIVE SIGNAL TO BE REMOVED
[Symbol]	EXISTING HYDRO TO BE REMOVED
[Symbol]	EXISTING TRAFFIC LIGHT TO BE REMOVED
[Symbol]	EXISTING GAS TO BE REMOVED
[Symbol]	EXISTING ROGERS FIBER OPTIC TO BE REMOVED
[Symbol]	EXISTING STREETLIGHT TO BE REMOVED
[Symbol]	EXISTING STORM SEWER TO BE REMOVED
[Symbol]	EASEMENT ON SUBJECT LAND SUBJECT TO INST. NO. L1955564

THESE PLANS ARE TO BE READ IN CONJUNCTION WITH UP-4-7. REFER TO CROSS-SECTIONS ON DRAWINGS UP-4-7 FOR ALL RELEVANT DIMENSIONS AND OFFSETS FROM PROPERTY LINE.

PROPERTY AS PART OF REGISTERED PLAN 434-823
 TOPOGRAPHIC SURVEY PROVIDED BY SCHAEFER QUALITY BENNETT LTD., FEBRUARY 2024

No.	DESCRIPTION	DATE	BY	APPROVED
1	ISSUED FOR DARC DPA/24 SUBMISSION	OCT 29/24	D.S.	

SGS consulting group ltd
 30 CENTURIAN DRIVE, SUITE 500
 MARKHAM, ONTARIO L3R 8B8
 TEL: (905) 475-1300
 FAX: (905) 475-8335

CITY OF MISSISSAUGA
EMTC HOLDINGS INC.
5100 ERIN MILLS PARKWAY - ERIN MILLS TOWN CENTRE PH. 1
PUBLIC UTILITIES & RIGHT-OF-WAY PLAN 2
 DATE: OCTOBER 2024 DESIGNED BY: D.S. CHECKED BY: P.C.
 SCALE: 1:300 DRAWN BY: D.S. CHECKED BY: P.C.

PROJECT NO: **2228**
 DRAWING NO: **UP-2**

SEE DWG. CUP-1

SEE DWG. CUP-3

