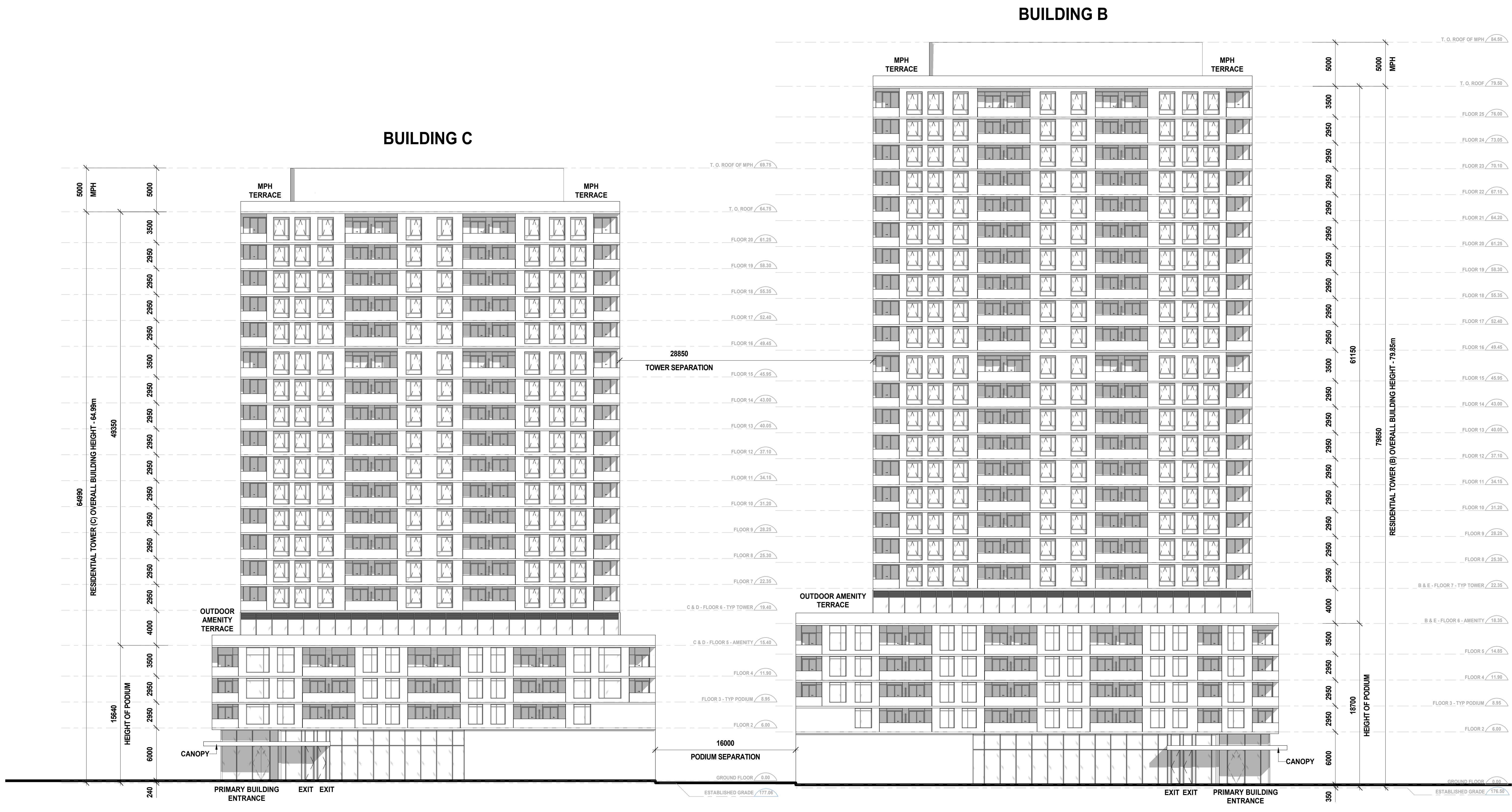


ELEVATION NOTE:
ELEVATIONS AND SECTIONS SHOWN HEREON ARE RELATED TO MISSISSAUGA DATUM AND REFERRED TO CITY OF MISSISSAUGA BENCHMARK No. 886, HAVING A PUBLISHED ELEVATION OF 169.786 METRES

Length No.	Begin Elev.	End Elev.	Length (m)	(e1.+e2/2)xL
1	176.85	177.12	32	5663.52
2	177.12	177.22	19.5	3454.82
Total:			51.5	9118.34
EG (m):			177.06	

Length No.	Begin Elev.	End Elev.	Length (m)	(e1.+e2/2)xL
1	176.25	176.57	35	6174.35
2	176.57	176.68	25.5	4503.9375
Total:			60.5	10678.29
EG (m):			176.50	



1 BUILDING C - WEST ELEVATION
A402.S

2 BUILDING B - WEST ELEVATION
A402.S

Date	No.	Description

REVISION RECORD

2024-10-01 Rezoning Application

ISSUE RECORD

BDP.
Quadrangle

Quadrangle Architects Limited
The Wall, 8 Spadina Avenue, Suite 2100, Toronto, ON M5V 0S8
T: 416.598.1240 www.bdpquadrangle.com

5100 - Erin Mills Town Centre

Mississauga, ON
for
Pemberton Group

23032 1:200 AT MF
PROJECT SCALE DRAWN REVIEWED

Building Elevations - Building B & C - West Elevation

A402.S

Note: This drawing is the property of the Architect and may not be reproduced or used without the expressed consent of the Architect. The Contractor is responsible for checking and verifying all levels and dimensions and shall report all discrepancies to the Architect and other consultation prior to commencing work.

Architect: BDP | 5100 - Erin Mills Town Centre | Pemberton Group | A402.S | 2024-10-01