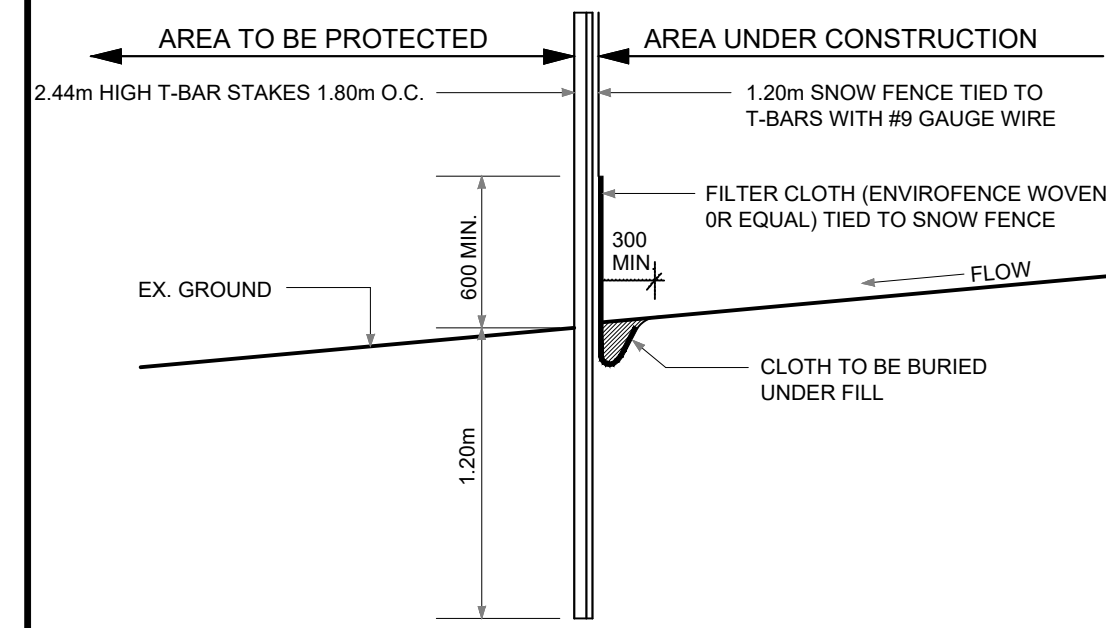


NOTE:  
1. Inspection of sediment control measures for all catchbasins should be carried out immediately after heavy rainfall and daily during prolonged rainfall events.

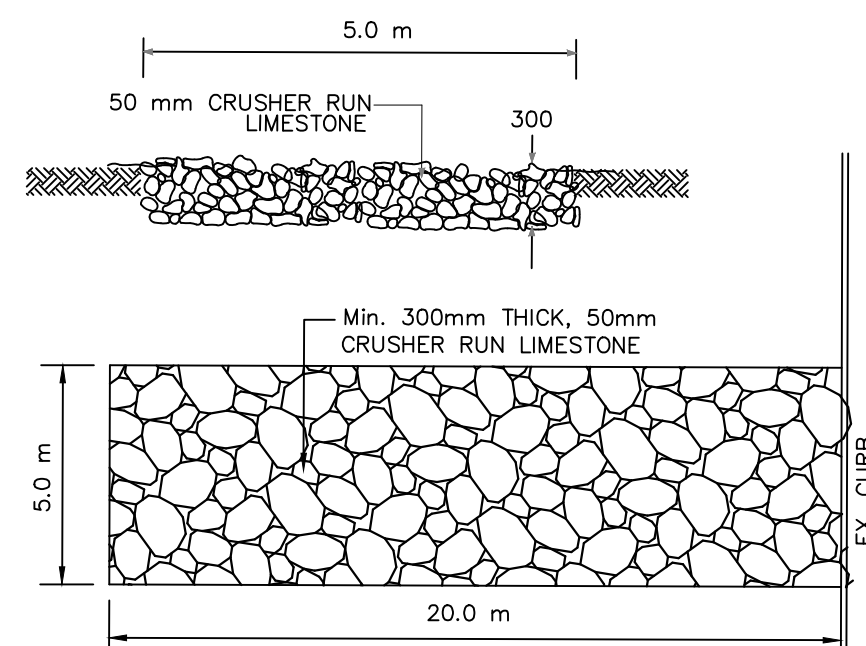
**CATCHBASIN SEDIMENT CONTROL DEVICE**

N.T.S.



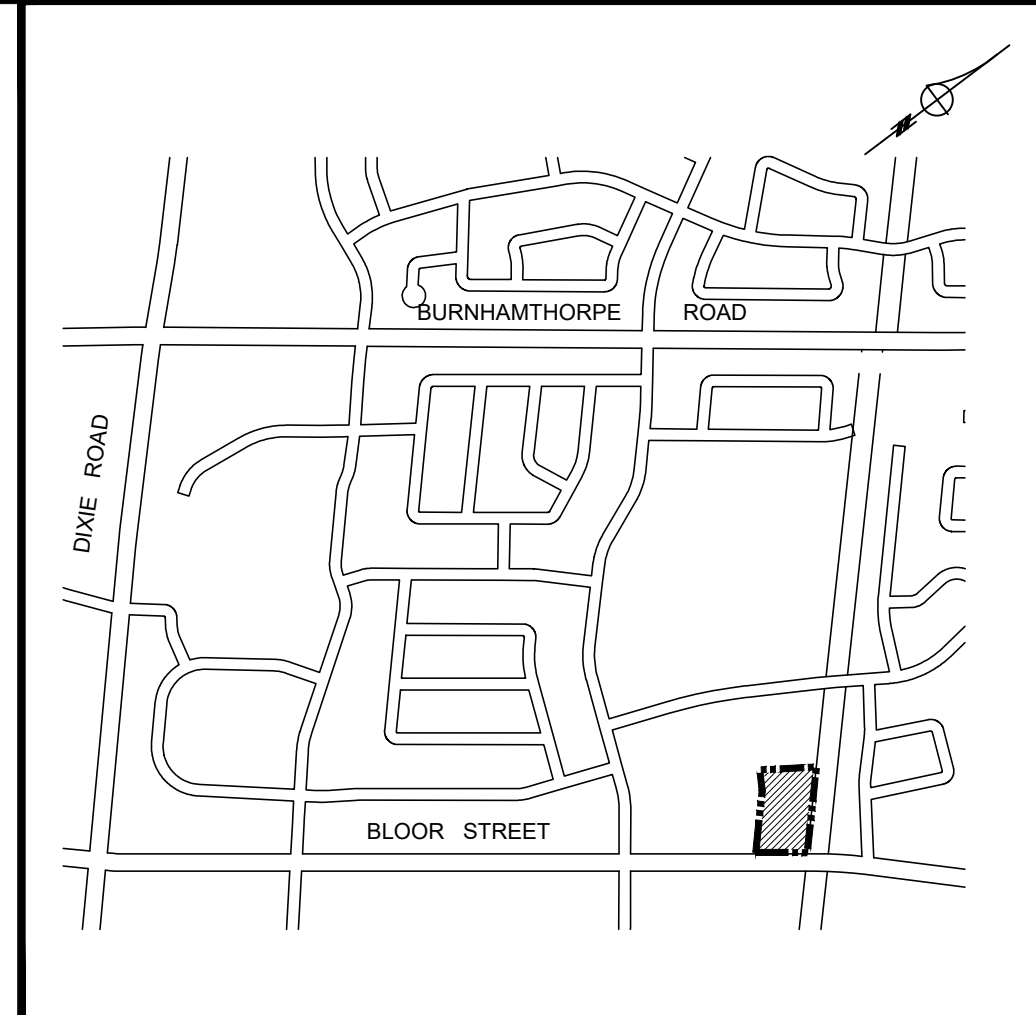
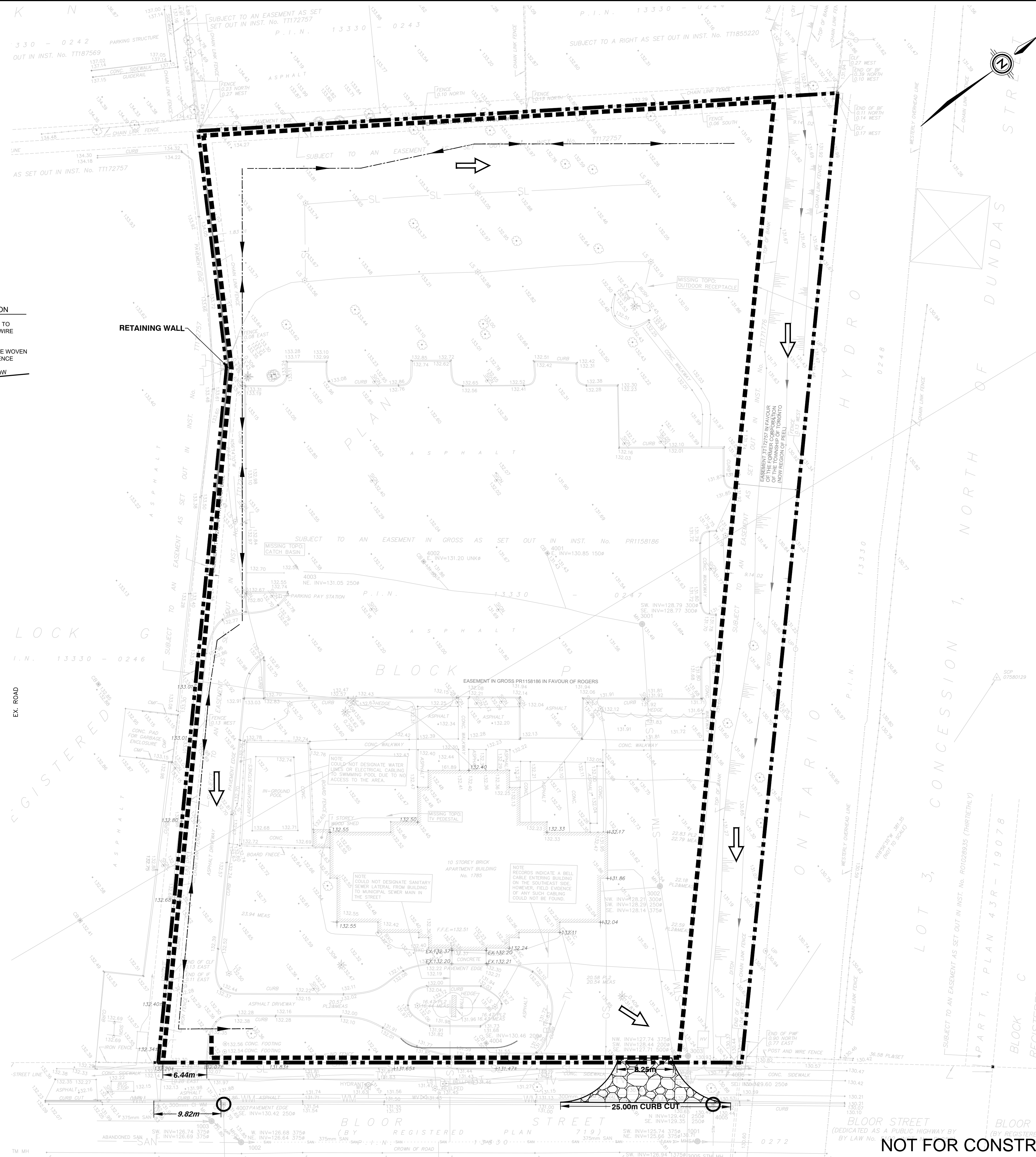
**SILTATION CONTROL FENCE**

N.T.S.



**MUD MAT DETAIL**

N.T.S.



KEY PLAN NTS

**LEGEND**

- SILTATION CONTROL FENCE
- CATCHBASIN SEDIMENT CONTROL BARRIER
- EXISTING ELEVATION
- MUD MAT
- LIMIT OF PROPERTY
- OVERLAND FLOW

ALL DIMENSIONS AND ELEVATIONS ARE IN METRES UNLESS OTHERWISE NOTED.  
PIPE SIZES ARE IN MILLIMETRES.  
ELEVATIONS ARE GEODETIC AND ARE REFERRED TO CITY OF MISSISSAUGA VERTICAL BENCH MARK NUMBER 686 HAVING AN ORTHOMETRIC ELEVATION OF 135.35 METRES. ELEVATIONS ARE REFERENCED TO THE CANADIAN GEODETIC VERTICAL DATUM OF 1928, PRE-1978 ADJUSTMENT (CGVD:1928:PRE-78ADJ).  
TABLET SET ON THE SOUTH FACE AT THE EAST CORNER OF THE MOST SOUTH WALL OF FOREST GLEN PUBLIC SCHOOL ON THE NORTH SIDE OF PONYTRAIL DRIVE, 122 METRES WEST OF BRIDGEWOOD DRIVE.

03	RE - ISSUED FOR ZBA APPLICATION	TC	DEC 18, 2023
02	RE - ISSUED FOR ZBA APPLICATION	TC	SEPT 25, 2023
01	ISSUED FOR ZBA APPLICATION	TC	MAY 27, 2022
No.	REVISIONS	BY	DATE

ALL PREVIOUS ISSUES OF THIS DRAWING ARE SUPERSEDED

CONSULTANT

CLIENT

1785 BLOOR HOLDINGS INC.

MUNICIPALITY

MISSISSAUGA

TITLE OF DRAWING

1785 BLOOR STREET  
MISSISSAUGA, ONTARIO  
EROSION AND SEDIMENTATION CONTROL PLAN

SCALE	1:300	DESIGN	A.S.	211-10685
DRAWN BY	CAD 10/12	CHECKED	T.C.	PLAN NUMBER
DATE	MAY 2022	SHEET	OF	C103

**NOT FOR CONSTRUCTION**

FILENAME: X:\D\10211-1068-00\_1785 Bloor Holdings Inc.\Engineering Drawings\211-10685\_85-1-851-EROSION.dwg  
DATE: Dec 18, 2023 2:28:00 PM  
DRAWN BY: CAD 10/12