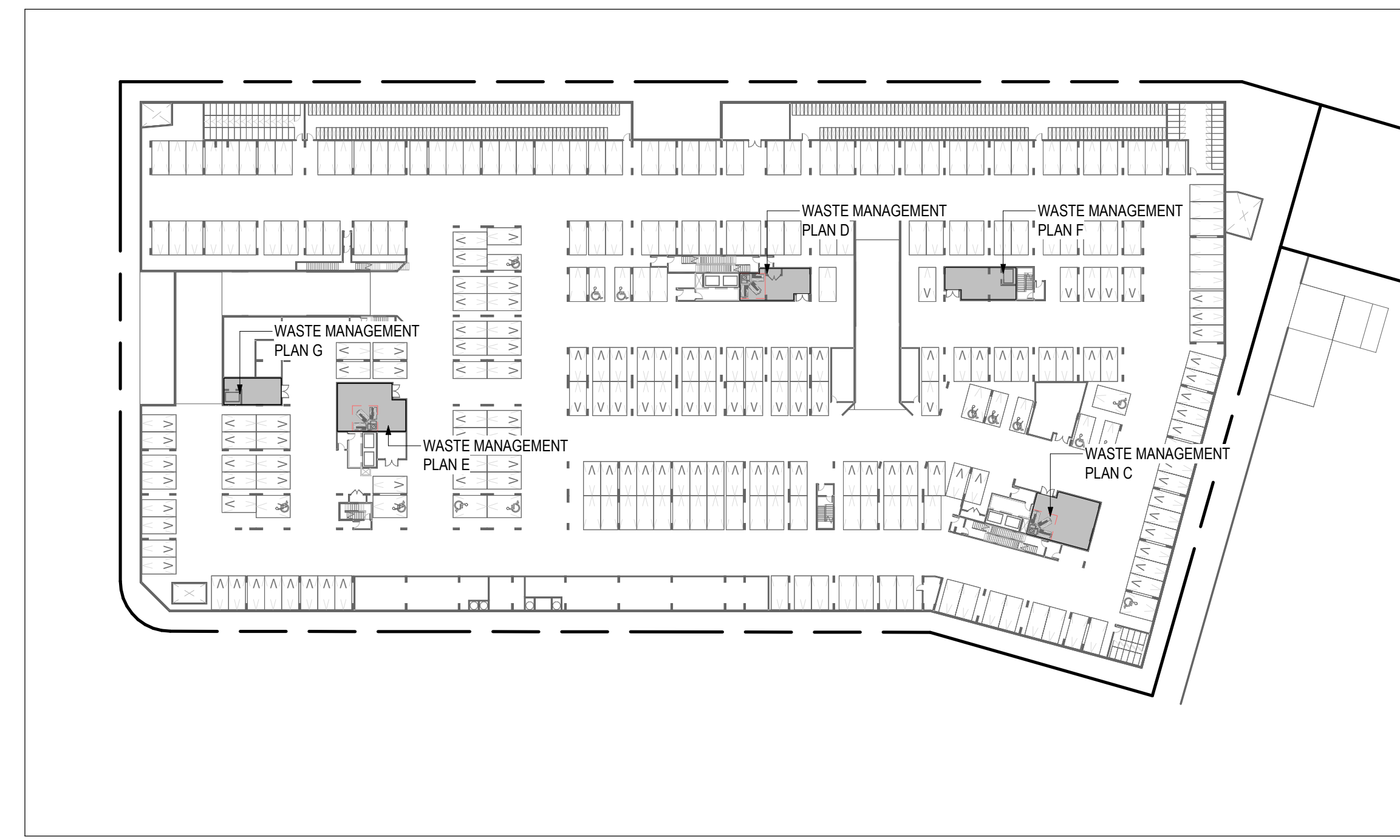


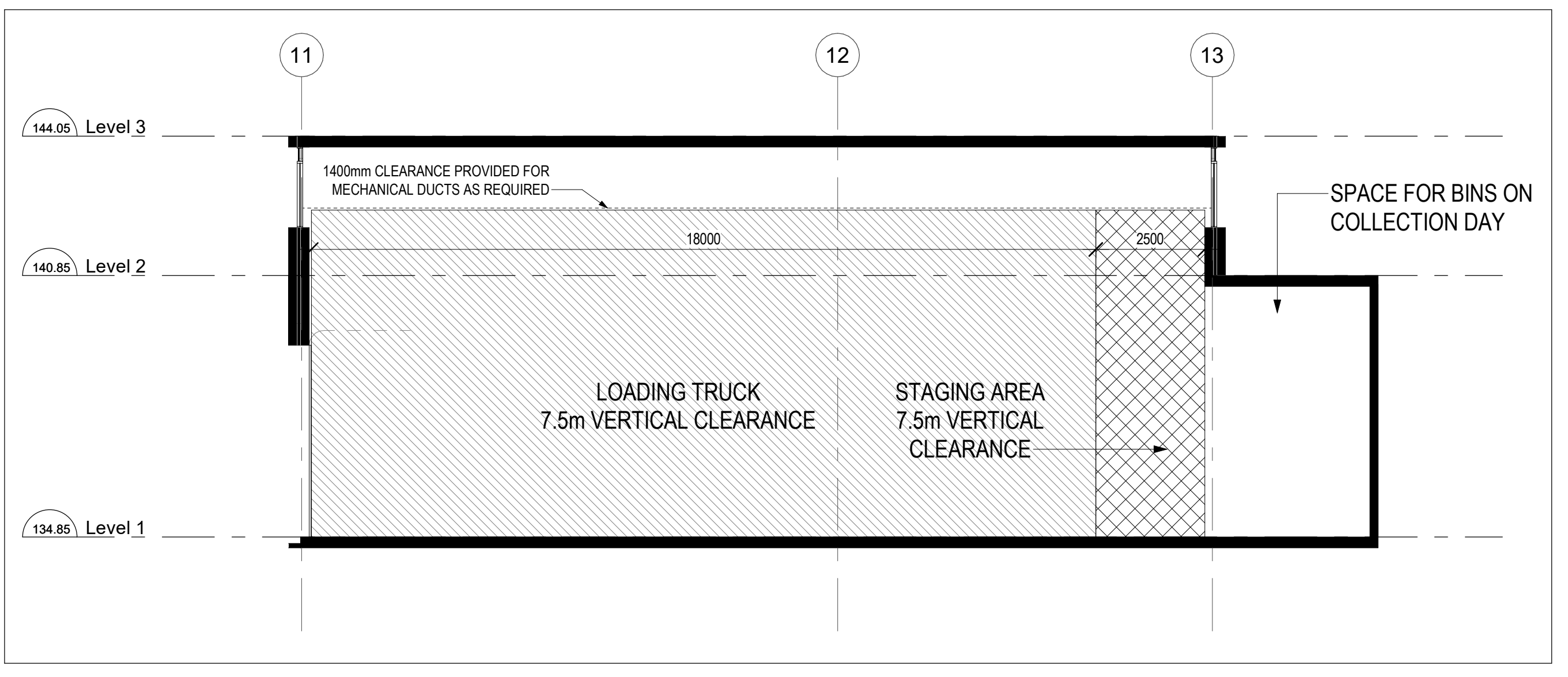
10 Level 1 Key Plan
A-085 NTS



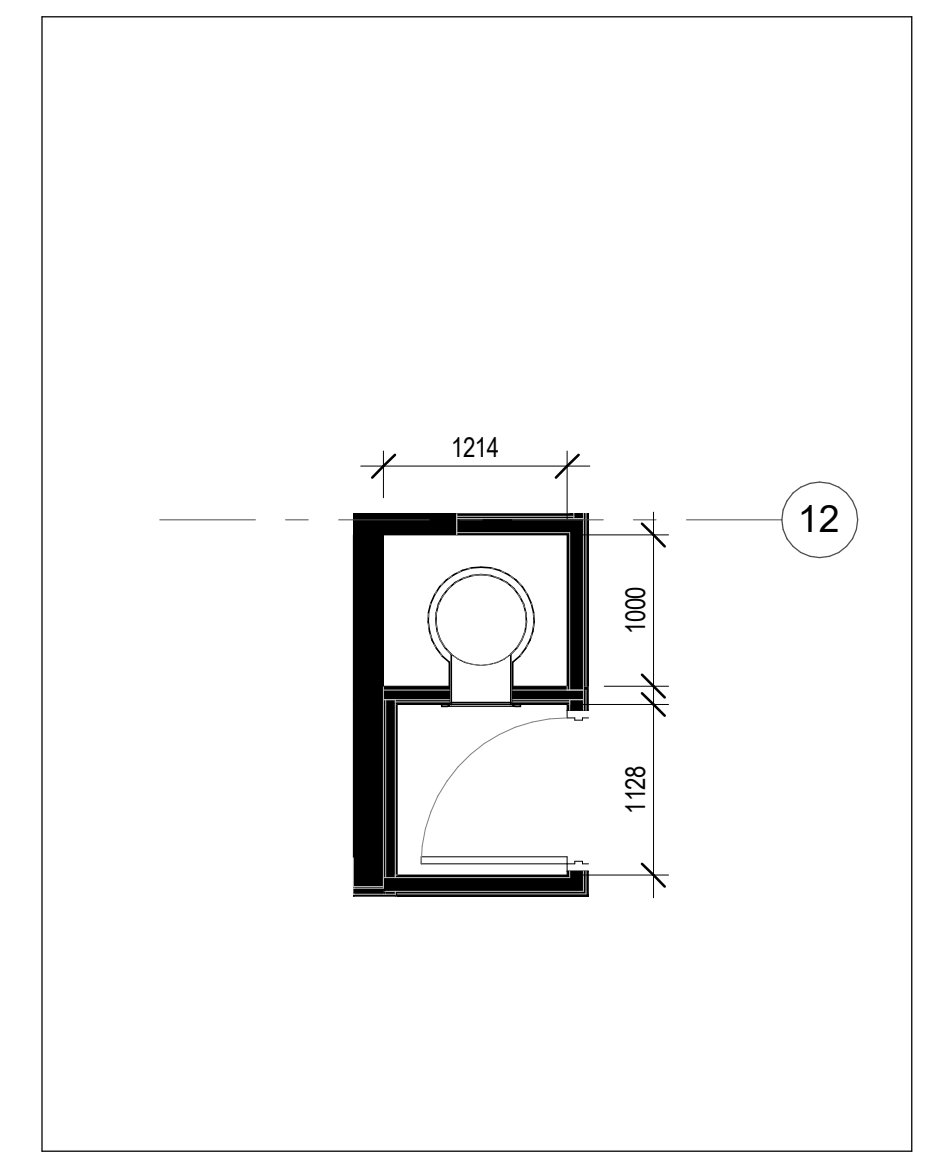
9 P1 Key Plan
A-085 NTS

		REQUIRED	PROPOSED	GROUND FLOOR WASTEROOM/LOADING	WASTEROOM 1 (P1)	WASTEROOM 2 (P1)	WASTEROOM 3 (P1)
		TOTAL	TOTAL				
UNITS SERVED		592 MULTI-RESIDENTIAL UNITS (579 APARTMENTS + 13 TOWNHOUSES)	592 MULTI-RESIDENTIAL UNITS (579 APARTMENTS + 13 TOWNHOUSES)	N/A	BUILDING A (204 APARTMENTS)	BUILDING B (212 APARTMENTS)	BUILDING C & TOWNHOUSES (163 APARTMENTS + 13 TOWNHOUSES)
AREA		N/A	1209.49m ² (INCLUDING BULKY WASTE AREA)	1023.75 m ² (INCLUDING BULKY WASTE AREA)	68.55 m ²	46.74 m ²	70.45 m ²
TRAVEL DISTANCE		MAX 45 m EXTERIOR TRAVEL DISTANCE (TOWNHOUSE TO GARBAGE CHUTE)	74 m INTERIOR TRAVEL DISTANCE (TOWNHOUSE TO GARBAGE CHUTE)	N/A	N/A	N/A	N/A
MIN. NUMBER OF FRONT END CONTAINERS	GARBAGE MATERIAL	102 yd ³ = 34 x 3 yd ³ FRONT-END BIN	111 yd ³ = 37 x 3 yd ³ FRONT-END BIN	27 x 3 yd ³ FRONT-END BIN	3 x 3 yd ³ FRONT-END BIN	3 x 3 yd ³ FRONT-END BIN	4 x 3 yd ³ FRONT-END BIN
	RECYCLABLE MATERIAL	45 yd ³ = 15 x 3 yd ³ FRONT-END BIN	54 yd ³ = 18 x 3 yd ³ FRONT-END BIN	11 x 3 yd ³ FRONT-END BIN	2 x 3 yd ³ FRONT-END BIN	2 x 3 yd ³ FRONT-END BIN	3 x 3 yd ³ FRONT-END BIN
	ORGANIC MATERIAL	0 yd ³ = 0 x 3 yd ³ FRONT-END BIN	0 yd ³ = 0 x 3 yd ³ FRONT-END BIN	0 x 3 yd ³ FRONT-END BIN	0 x 3 yd ³ FRONT-END BIN	0 x 3 yd ³ FRONT-END BIN	0 x 3 yd ³ FRONT-END BIN
BULKY WASTE STORAGE	10 m ² FOR EACH MULTI-RESIDENTIAL COMPLEX	30 m ²	30 m ²	0 m ²	0 m ²	0 m ²	0 m ²

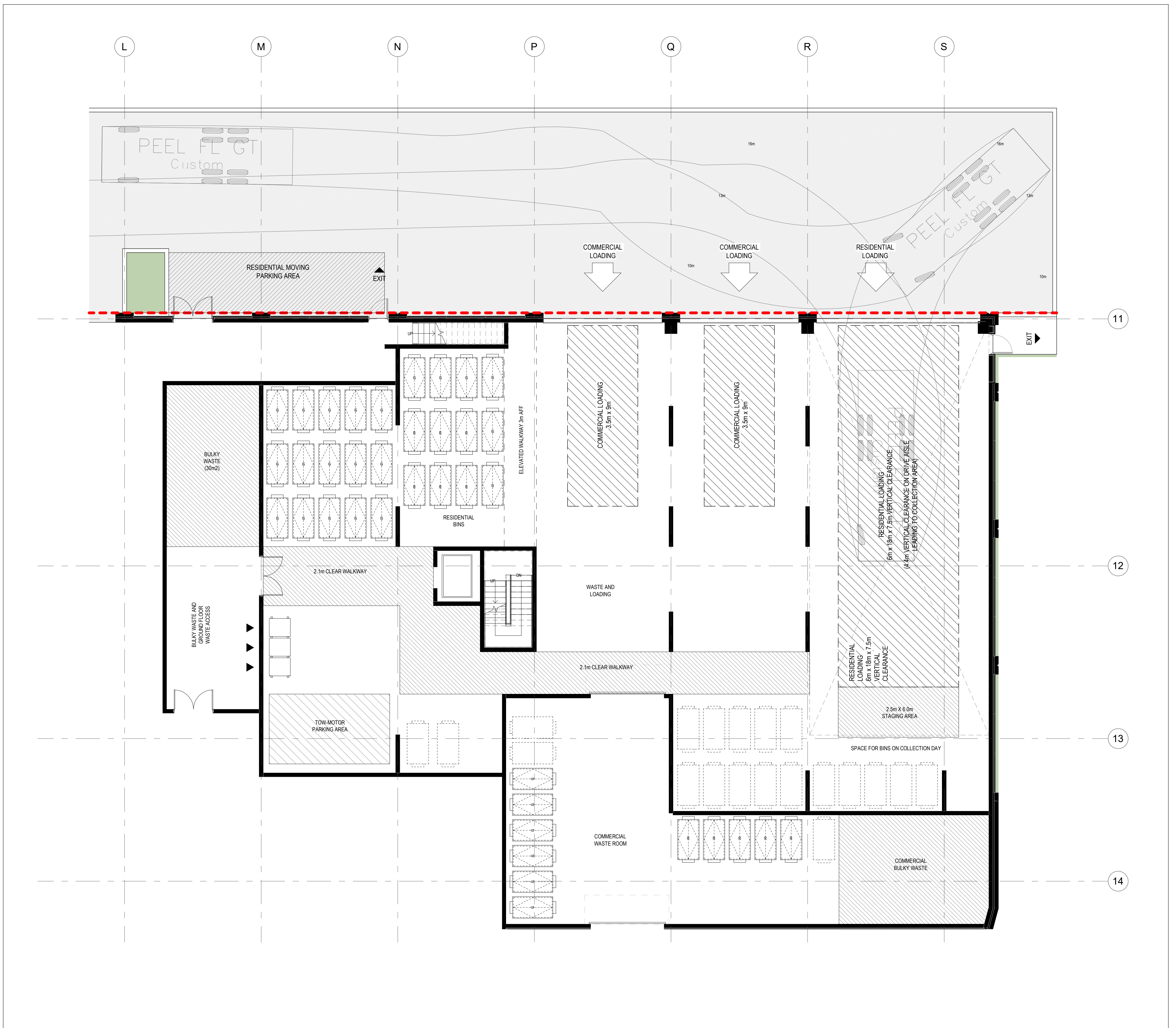
GENERAL NOTES:
1. TRAINED ON-SITE STAFF MEMBER WILL BE AVAILABLE TO MANOEUVRE BINS FOR THE COLLECTION DRIVER AND ALSO ACT AS A FLAGMAN WHEN THE TRUCK IS REVERSING. IN THE EVENT THE ON-SITE STAFF IS UNAVAILABLE AT THE TIME THE CITY COLLECTION VEHICLE ARRIVES AT THE SITE, THE COLLECTION VEHICLE WILL LEAVE THE SITE AND NOT RETURN UNTIL THE NEXT SCHEDULED COLLECTION DAY.
2. THE LOADING SPACE IS LEVEL (+2%) AND IS CONSTRUCTED OF A MINIMUM OF 200MM REINFORCED CONCRETE.
3. THE STAGING PAD ADJACENT TO THE FRONT OF THE LOADING SPACE IS LEVEL (+2%) AND IS CONSTRUCTED OF A MINIMUM OF 200MM REINFORCED CONCRETE.
4. THAT ALL ACCESS DRIVEWAYS TO BE USED BY THE COLLECTION VEHICLE WILL BE LEVEL (MAXIMUM 8% SLOPE) HAVE A MINIMUM VERTICAL CLEARANCE OF 4 METRES THROUGHOUT.



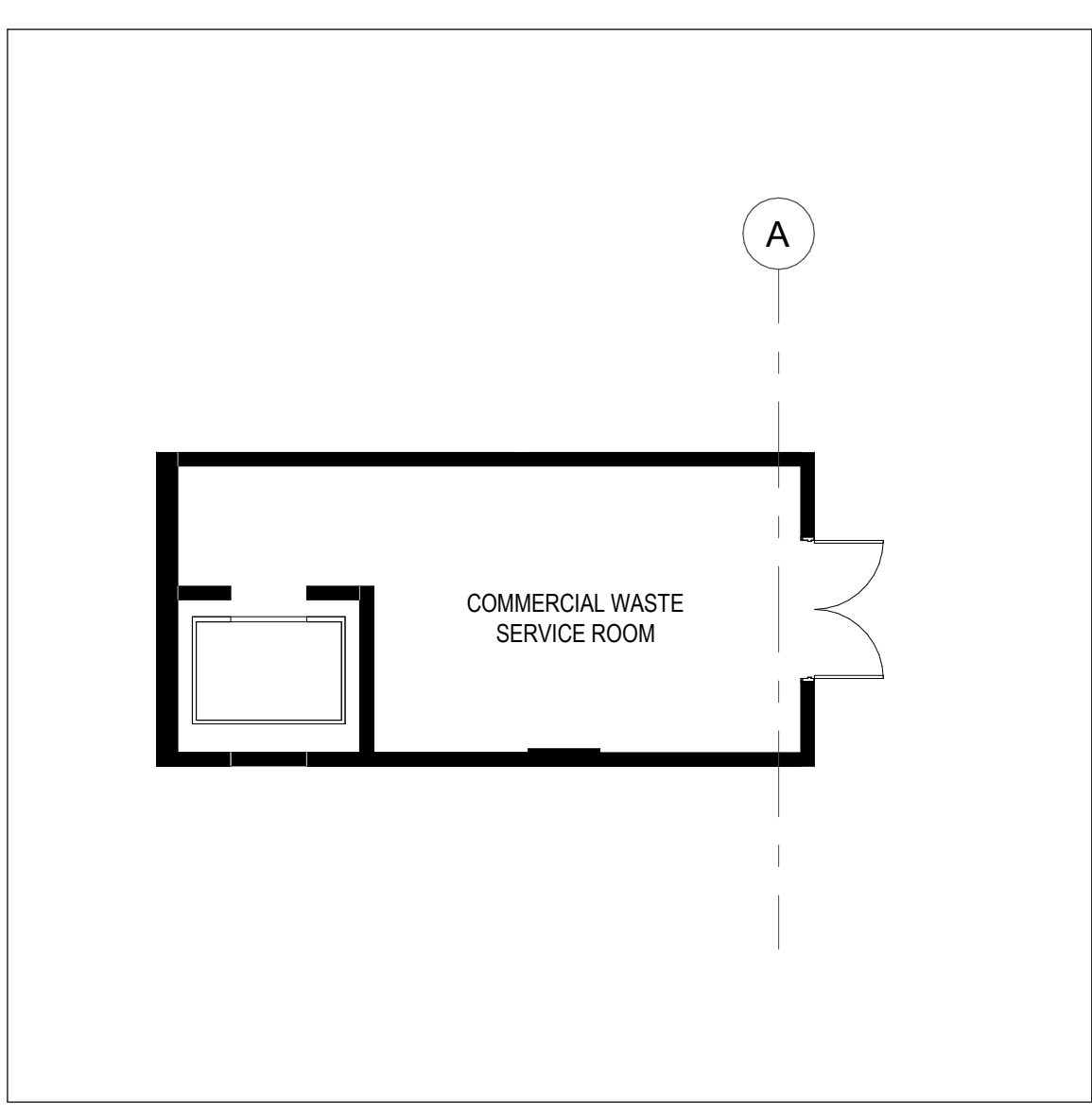
8 Garbage Loading Section
A-085 Scale: 1 : 100



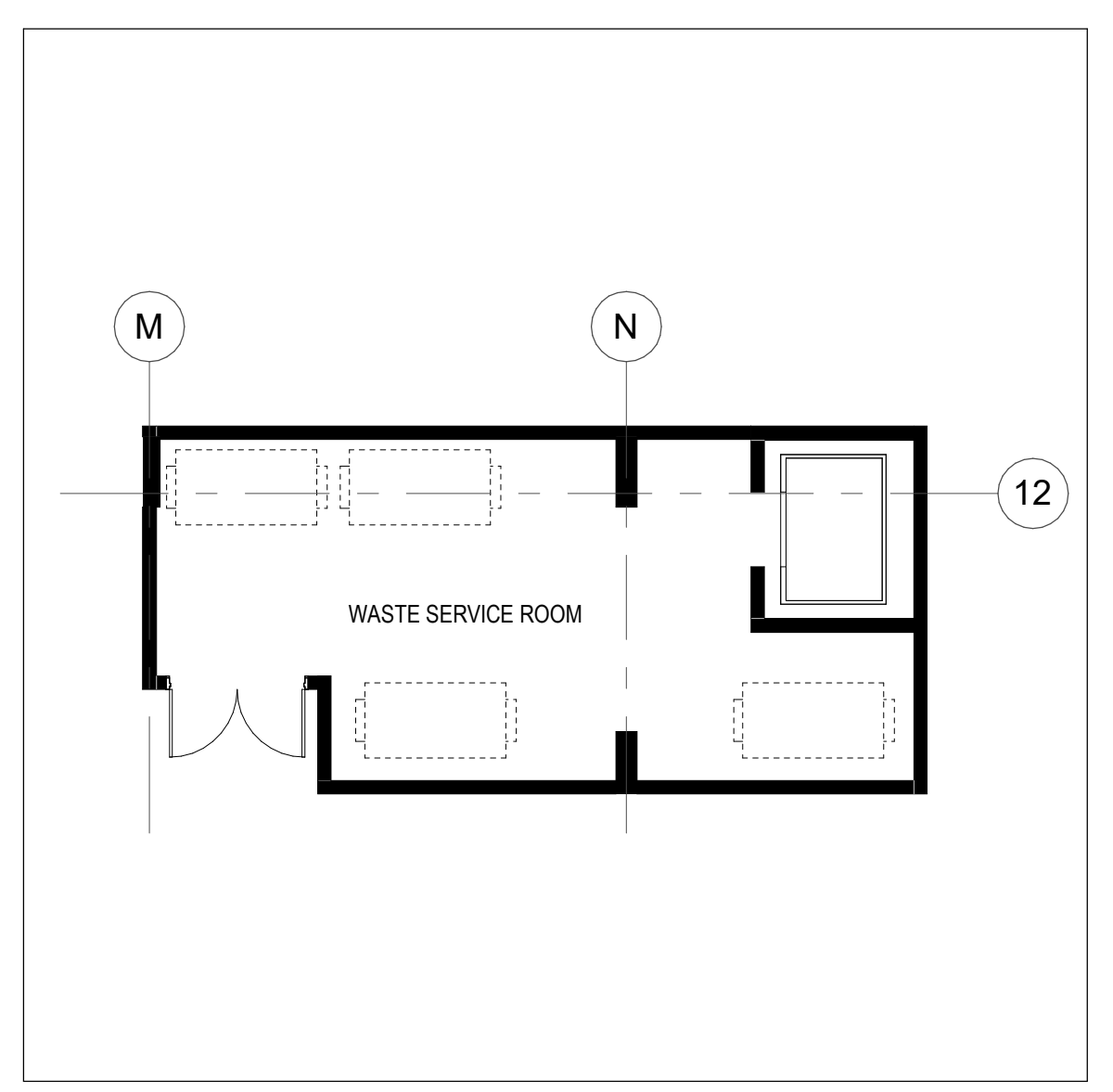
7 Typical Garbage Chute Room
A-085 Scale: 1 : 50



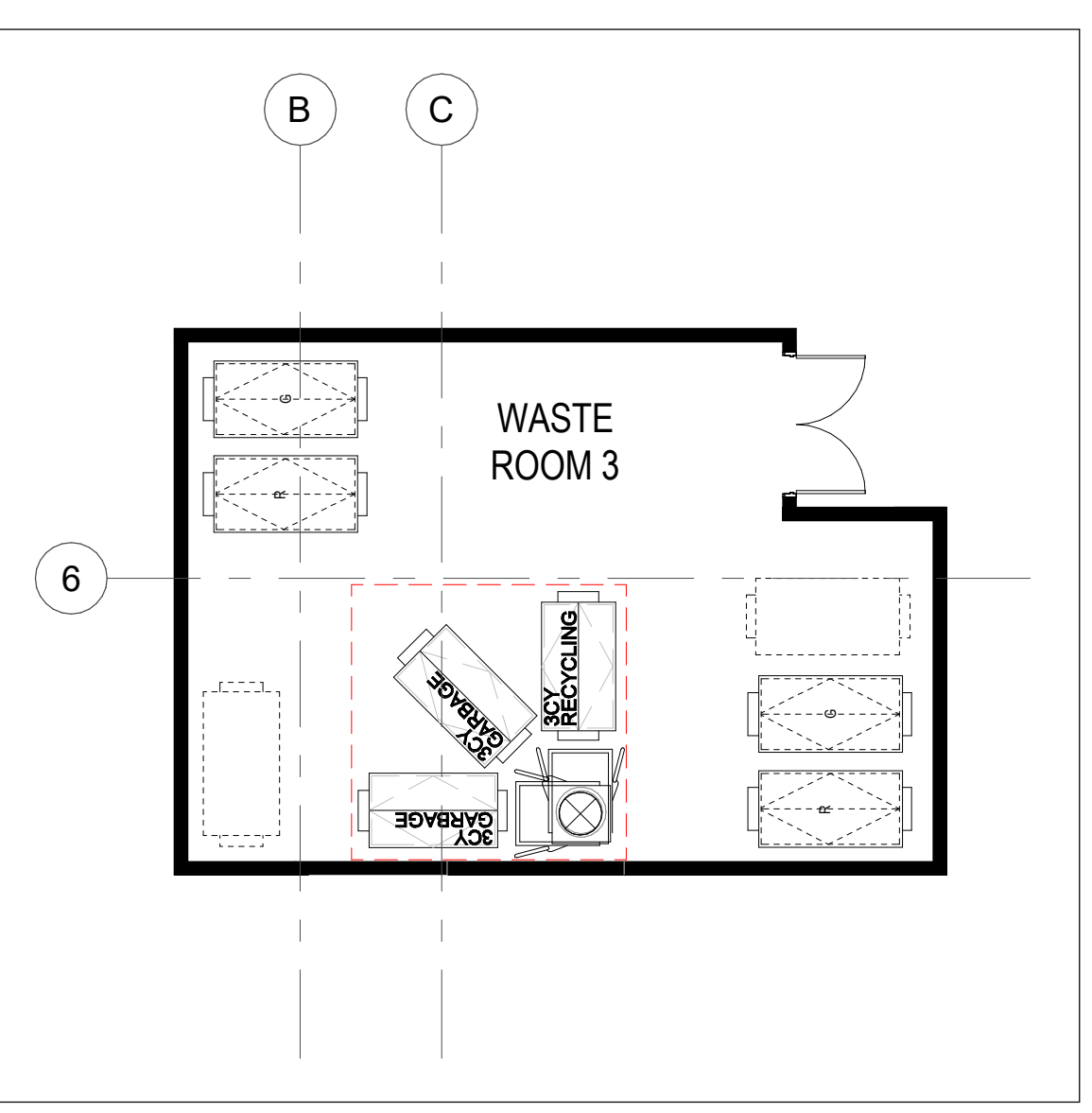
1 Waste Management Plan A
A-085 Scale: 1 : 100



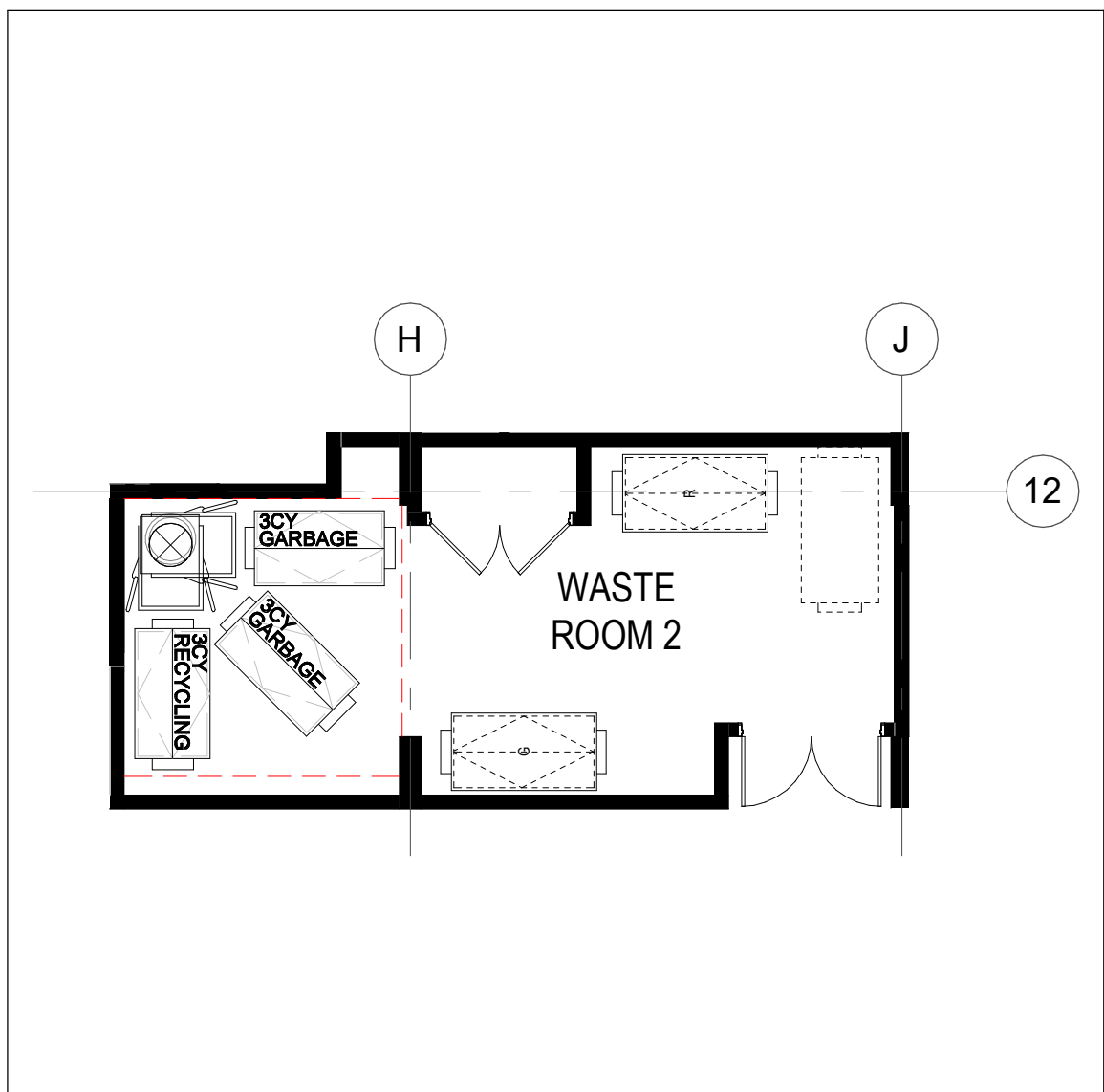
11 Waste Management Plan G
1 : 100



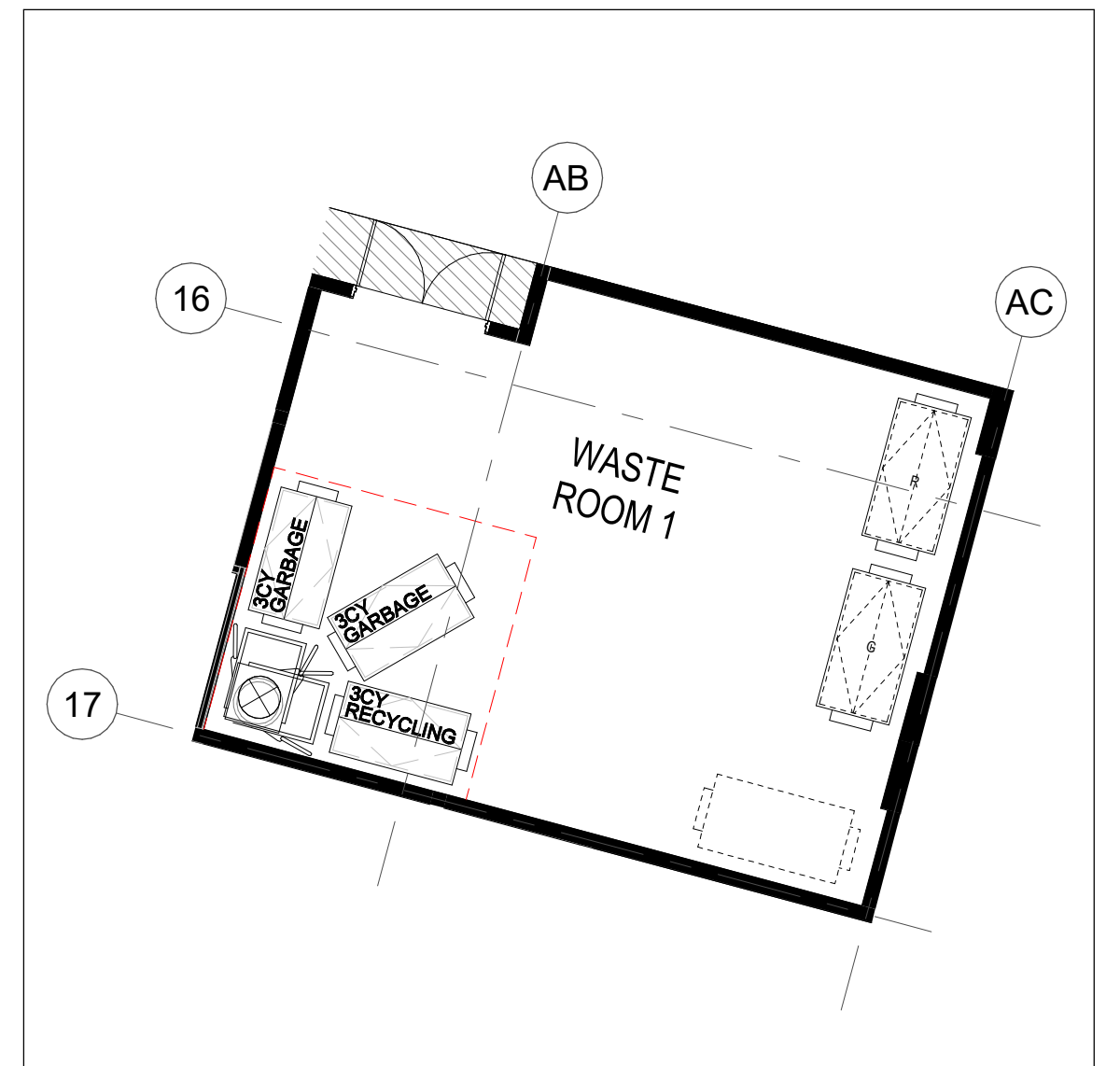
6 Waste Management Plan F
1 : 100



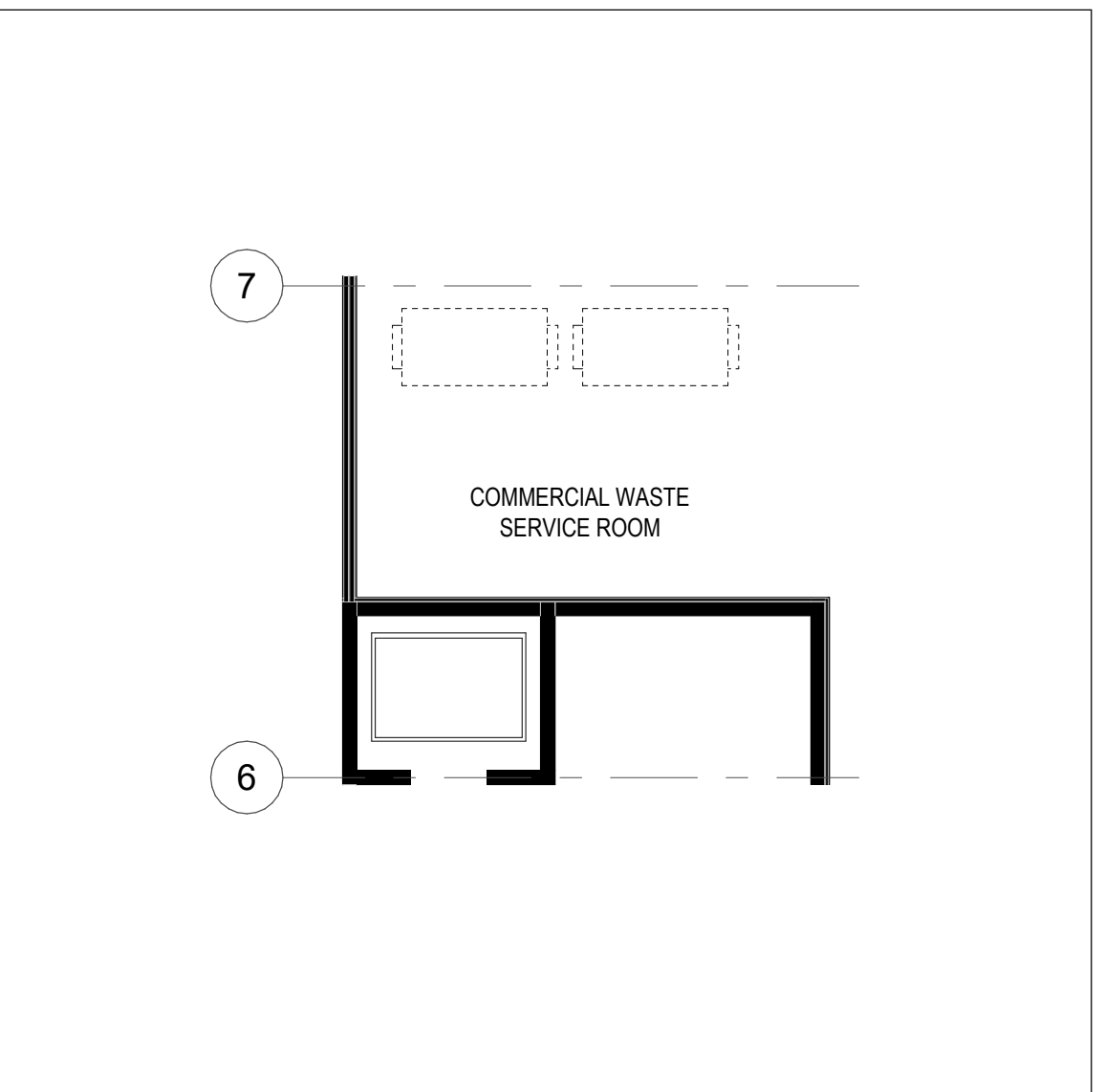
5 Waste Management Plan E
1 : 100



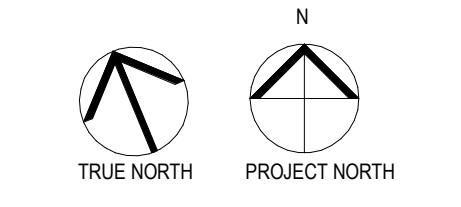
4 Waste Management Plan D
A-085 Scale: 1 : 100



3 Waste Management Plan C
A-085 Scale: 1 : 100



2 Waste Management Plan B
A-085 Scale: 1 : 100



NO.	DATE	ISSUED FOR



ALL DRAWINGS ARE THE PROPERTY OF ONESPACE AND THEY ARE NOT TO BE REPRODUCED OR COPIED IN ANY MANNER WITHOUT THE WRITTEN CONSENT FROM ONESPACE.
DRAWINGS ARE INTENDED TO CONVEY SCOPE OF WORK AND INDICATE MATERIALS AND PERFORMANCE CRITERIA APPROXIMATELY AND NOT TO BE USED FOR CONSTRUCTION OR AS A BASIS FOR CONTRACTS.
PRE-APPLICATION MEETING NO. DANC 24-030

CLIENT
Forest Glen Shopping Centre Ltd. 3427 Fieldgate Dr. Mississauga ON, L4X 2J4 ADDRESS

3403-3445 Fieldgate Drive Mississauga, ON

DRAWING
Waste Management Plans

PROJECT NUMBER	DATE
23063	05 DEC 2024
SCALE	PLOTTED DATE
As indicated	2024-12-05 2:04:51 PM