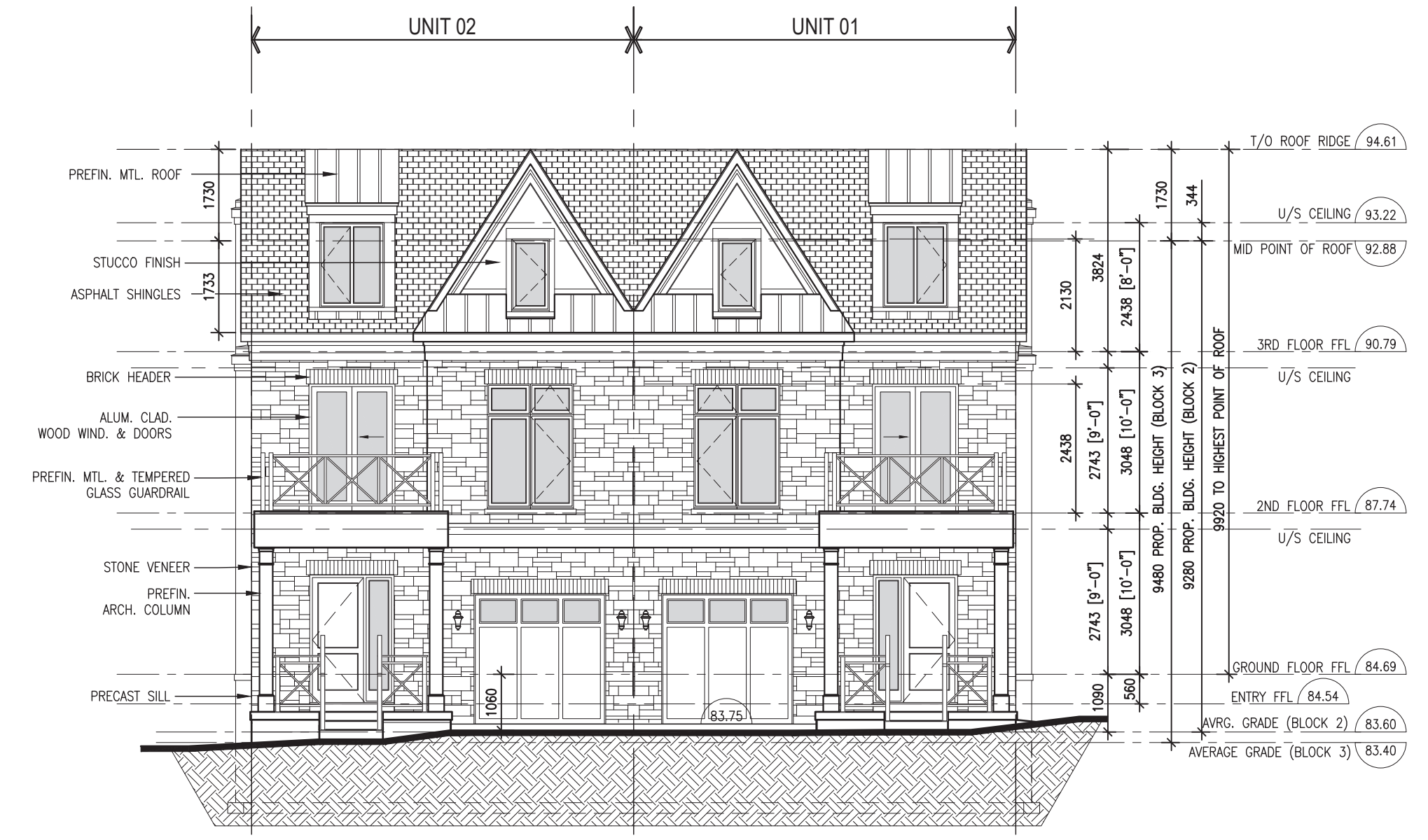


LEGEND

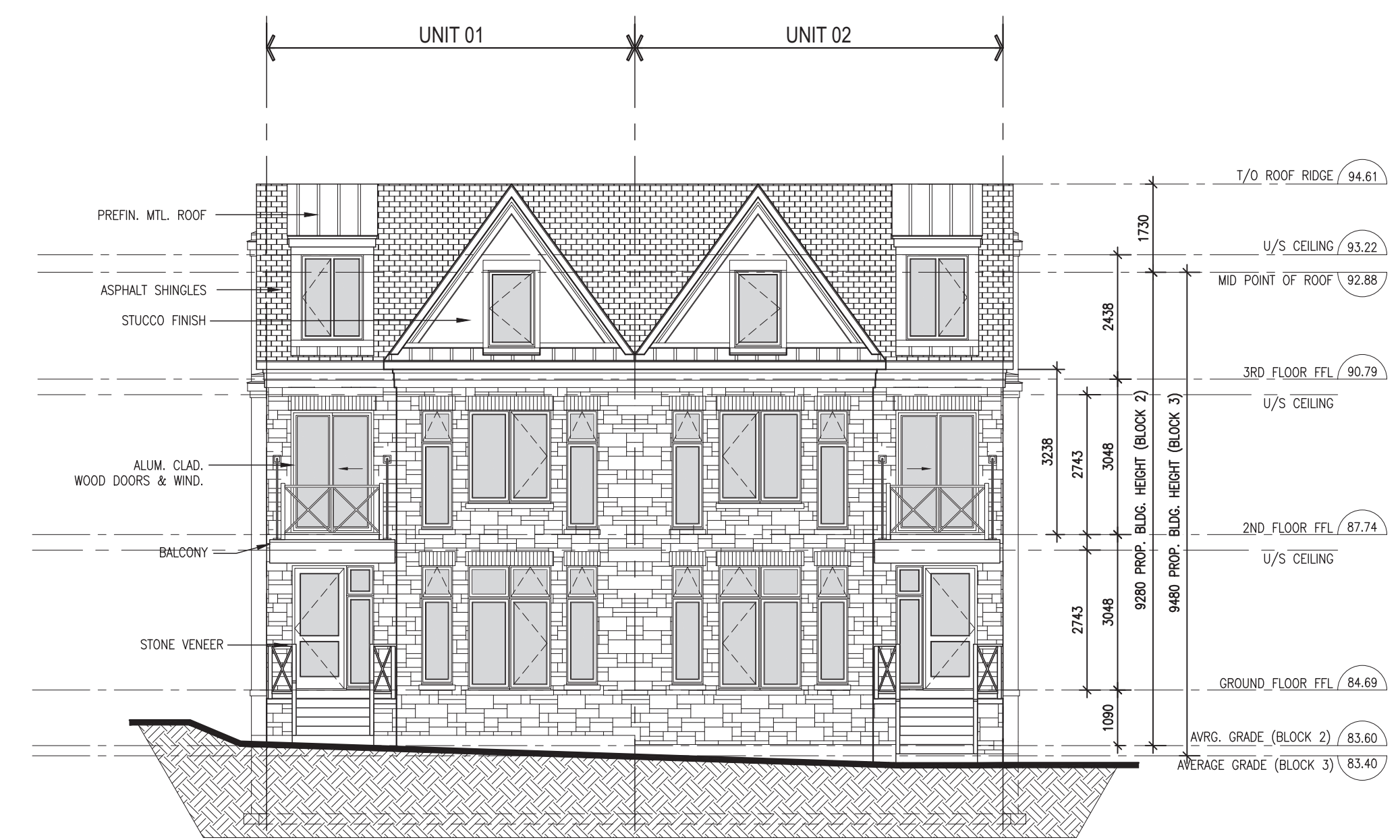
	FAUX WINDOW
	CLEAR GLASS FIXED WINDOW
	CLEAR GLASS OPERABLE WINDOW



SEMI-S - PROPOSED SOUTH (SIDE) ELEVATION



SEMI-S - PROPOSED EAST (STREET) ELEVATION



SEMI-S - PROPOSED WEST (REAR) ELEVATION

LEGAL
This drawing, as an instrument of service, is provided by and is the property of Joseph N. Campitelli Architect Inc. (the "Architect"). The contractor must verify and accept responsibility for all dimensions and conditions on site and must notify the Architect of any variations from the supplied information. The Architect is not responsible for the accuracy of survey, structural, mechanical, electrical, engineering information, etc., which is shown on this drawing. Refer to the appropriate engineering drawings before proceeding with the work. Construction must conform to all applicable codes and requirements of the authorities having jurisdiction. Unless otherwise noted, no investigation has been undertaken or reported on by the Architect in regard to the environmental condition of the site to which this drawing relates. This drawing is not to be used for construction purposes until approved by the Architect.

This drawing is not to be scaled. All architectural symbols indicated on this drawing are graphic representations only.

COUNTERSIGNED
Joseph N. Campitelli, Architect
B.Arch., O.A.A., M.R.A.I.C.

DATE

PROJECT ARCHITECT
J. CAMPITELLI
ASSISTANT DESIGNER

DRAWN BY
RD
CHECKED BY
J.C.