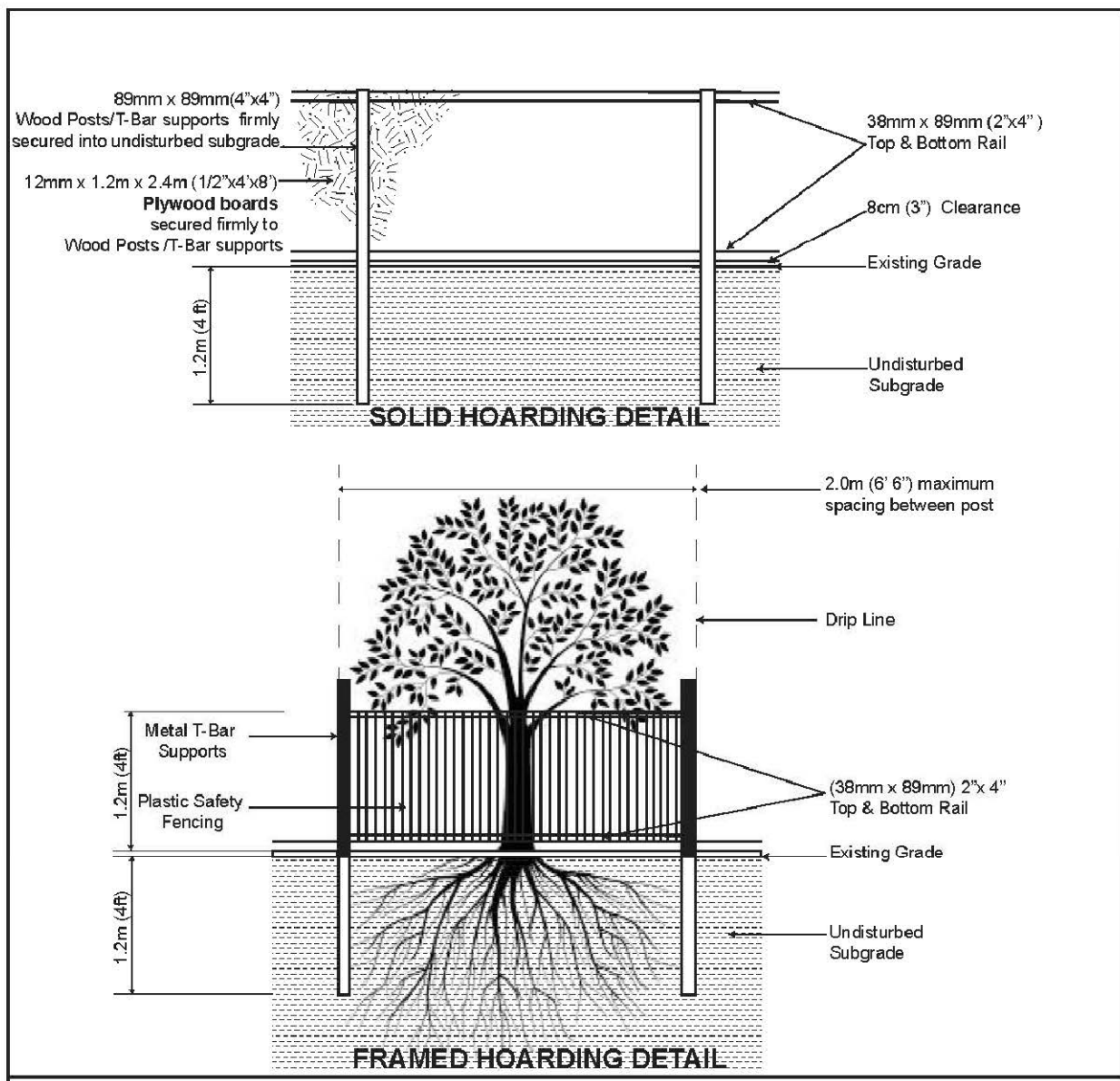


EXISTING TREE INVENTORY									
KEY SPECIES	CALIPER IN (cm)	CROWN IN (m)	HEALTH G/F/P	STRUCTURE	COMMENTS	PRESERVATION DIRECTION	TREE CATEGORY	MIN. TP2	KEY
1 SIBERIAN ELM	43.0	10.0	FAIR	ONE SIDED FORM	HIGH CROWN, CROWN SIGNIFICANTLY ELEVATED, MINOR SUCKER GROWTH ON STEM	REMOVED BY CITY	CITY	3	1
2 COLORADO BLUE SPRUCE	36.0	8.0	GOOD	ASYMMETRICAL FORM	CROWDED BY ADJACENT TREE, ELEVATED CROWN	PRESERVE	PRIVATE	2.4	2
3 NORWAY SPRUCE	37.5	8.0	POOR	NARROW FORM	CROWDED BY ADJACENT TREE, TOP THIRD OF TREE IS DEAD	PRESERVE	NEIGHBOUR	2.4	3
4 WHITE MULBERRY	37.59	15.0	POOR	DOUBLE STEM	STEM SPLITS AT GRADE, SIGNIFICANT DEADWOOD AND DIEBACK THROUGHOUT, MAY BE IN A GENERAL STATE OF DECLINE	REMOVE	PRIVATE	3.6	4
5 MANITOBA MAPLE	21.0	8.0	FAIR	ONE SIDED FORM	LEANING, CROWDED BY ADJACENT TREE, LOWER LIMBS VINE ENTANGLED	REMOVE	PRIVATE	1.8	5
6 WHITE PINE	65.5	12.0	GOOD	GOOD FORM	MATURE, ELEVATED CROWN	PRESERVE	NEIGHBOUR	4.2	6
7 NORWAY MAPLE	23.0	5.0	GOOD	ONE SIDED FORM	CROWDED BY ADJACENT TREE	PRESERVE	NEIGHBOUR	1.8	7
8 SILVER MAPLE	15.5	5.0	FAIR	NARROW FORM	HIGH CROWN, CROWDED BY ADJACENT TREE	PRESERVE	NEIGHBOUR	1.8	8
9 SILVER MAPLE	15.0	5.0	GOOD	ONE SIDED FORM	CROWDED BY ADJACENT TREE	PRESERVE	NEIGHBOUR	1.8	9
10 BLACK CHERRY	32.5	10.0	FAIR	ONE SIDED FORM	HIGH CROWN, CROWDED BY ADJACENT TREE, MAJORITY OF CROWN OVER HANGS SUBJECT PROPERTY	PRESERVE	NEIGHBOUR	2.4	10
11 SILVER MAPLE	47.5	17.0	GOOD	ASYMMETRICAL FORM	CROWDED BY ADJACENT TREE, MINOR DIEBACK ON LOWER BRANCHES	PRESERVE	BOUNDARY	3	11
12 SILVER MAPLE	26.5	9.0	FAIR	ONE SIDED FORM	LEANING, SUBORDINATED BY ADJACENT TREE, ENTIRE CROWN OVER HANGS SUBJECT PROPERTY	PRESERVE	BOUNDARY	1.8	12
13 BLACK CHERRY	35.0	8.0	POOR	ONE SIDED FORM	LEANING, CROWDED BY ADJACENT TREE, SIGNIFICANT DIEBACK AND SUCKER GROWTH THROUGHOUT, ENTIRE CROWN OVERHANGS ADJACENT PROPERTY TO THE NORTH	REMOVE	BOUNDARY	2.4	13
14 RED OAK	30.5	9.0	GOOD	GOOD FORM	MINOR DIEBACK ON LOWER BRANCHES	PRESERVE	PRIVATE	2.4	14
15 WHITE PINE	+/- 65	12.0	GOOD	GOOD FORM	MATURE, HIGH CROWN, STEM ENCASED WITHIN A PRECAST, UNIT PAVED PATIO	PRESERVE	NEIGHBOUR	4.2	15
16 BLACK CHERRY	25.0	7.0	POOR	IRREGULAR FORM	SUBORDINATED BY ADJACENT TREES, EPICORMIC GROWTH THROUGHOUT	PRESERVE	NEIGHBOUR	1.8	16
17 BLACK CHERRY	30.0	9.0	FAIR	ONE SIDED FORM	CROWDED BY ADJACENT TREE, DEADWOOD AND EPICORMIC GROWTH THROUGHOUT	REMOVE	PRIVATE	2.4	17
18 WHITE PINE	+/- 60	12.0	POOR	DOUBLE LEADER	TOP HALF DEAD, STEM ENCASED IN BRICK PAVING, DECLINING	PRESERVE	NEIGHBOUR	3.6	18
19 NORWAY MAPLE	28.38	16.0	POOR-FAIR	MULTI-STEMMED	CLUSTER OF 4 STEMS, OPEN CROWN, ONE DEAD STEM, DIEBACK AND DECAY IN SEVERAL OTHER STEMS	REMOVE	PRIVATE	2.4	19
20 BLACK WALNUT	63.0	20.0	GOOD	BROAD FORM	OPEN CROWN, BROKEN BRANCH IN CROWN, SOME UPPER CROWN DIEBACK	REMOVE	PRIVATE	4.2	20
21 BUTTERNUT (CULTIVATED)	24.5	10.0	FAIR	ASYMMETRICAL FORM	CROWDED BY ADJACENT TREE, SOME CROWN DIEBACK THROUGHOUT	REMOVE	PRIVATE	1.8	21
22 NORWAY MAPLE	33.0	9.0	GOOD	ASYMMETRICAL FORM	CROWDED BY ADJACENT TREE, MINOR BASAL DECAY	REMOVE	PRIVATE	2.4	22
23 NORWAY MAPLE	25.0	4.0	POOR	NARROW FORM	CROWDED BY ADJACENT DEAD ASH, DIEBACK THROUGHOUT	REMOVE	PRIVATE	1.8	23
24 BLACK WALNUT	50.0	10.0	GOOD	ONE SIDED FORM	HIGH CROWN, CROWDED BY ADJACENT TREE, LOWER BRANCHES VINE ENTANGLED	PRESERVE	CITY	3	24
25 BLACK WALNUT	40.0	12.0	GOOD	DOUBLE STEM	ONE SIDED FORM, CROWDED BY ADJACENT TREE, HIGH CROWN, MAJORITY OF CROWN OVER HANGS ADJACENT ROAD	REMOVE	CITY	2.4	25
26 BLACK WALNUT	10.22	6.0	GOOD	DOUBLE STEM	ONE SIDED FORM, CROWDED BY ADJACENT TREE, EPICORMIC GROWTH ON LOWER LIMBS	REMOVE	CITY	1.8	26
27 NORWAY MAPLE	26.0	5.0	POOR	ONE SIDED FORM	95% DEAD, DECLINING	REMOVE	CITY	1.8	27
28 BLACK WALNUT	52.0	16.0	GOOD	BROAD FORM	MINOR INTERNAL DIEBACK	REMOVE	CITY	3.6	28
29 NORWAY MAPLE	23.0	8.0	GOOD	GOOD FORM	DIEBACK ON LOWER BRANCHES	REMOVE	CITY	1.8	29
30 SPRUCE SPP.	24.5	5.0	DEAD			REMOVE	CITY	1.8	30
31 WHITE MULBERRY	40.5	7.0	FAIR	ONE SIDED FORM	CROWDED BY ADJACENT TREE, SOME DIEBACK THROUGHOUT CROWN	REMOVE	CITY	2.4	31
32 ASH	55.0	5.0	DEAD	STUMP WITH WATER SPROUTS		REMOVE	PRIVATE	3.6	32
33 NORWAY MAPLE	18.0	4.0	GOOD	NARROW FORM	SUBORDINATED BY ADJACENT TREE, ROOT COLLAR FUSED TO ADJACENT TREE	REMOVE	CITY	1.8	33
34 RED OAK	37.0	9.0	FAIR	ONE SIDED FORM	CROWDED BY ADJACENT TREE, CROWN OVER HANGS ADJACENT ROAD	REMOVE	CITY	2.4	34
35 RED OAK	39.0	9.0	FAIR	ONE SIDED FORM	CROWDED BY ADJACENT TREE, INTERNAL CROWN DIEBACK, CROWN OVER HANGS ADJACENT ROAD	REMOVE	CITY	2.4	35
36 NORWAY MAPLE	17.0	7.0	FAIR	ONE SIDED FORM	SUBORDINATED BY ADJACENT TREES, SOME DIEBACK IN CROWN	PRESERVE	CITY	1.8	36
37 NORWAY MAPLE	40.0	15.0	FAIR	LEANING	CROWDED BY ADJACENT TREE, SOME TWIG TIP DIEBACK THROUGHOUT	REMOVE	CITY	2.4	37
38 RED OAK	53.0	18.0	GOOD	ASYMMETRICAL FORM	CROWDED BY ADJACENT TREE, MINOR DIEBACK IN UPPER CROWN	REMOVE	CITY	3.6	38
39 NORWAY MAPLE	40.0	8.0	FAIR	CO-DOMINANT LEADERS	IRREGULAR CROWN, CROWDED BY ADJACENT TREE, EPICORMIC GROWTH ON LOWER LIMBS, SOME DEADWOOD IN CROWN	REMOVE	CITY	2.4	39
40 NORWAY SPRUCE	51.0	10.0	GOOD	GOOD FORM	ELEVATED CROWN, SOME DIEBACK ON CROWDED SIDE	REMOVE	CITY	3.6	40
41 RED OAK	57.0	13.0	GOOD	LEANING	ONE SIDED FORM, CROWDED BY ADJACENT TREE, CO-DOMINANT LEADERS, MINOR INTERNAL DIEBACK	PRESERVE	CITY	3.6	41
42 NORWAY SPRUCE	56.5	10.0	FAIR	GOOD FORM	DIEBACK ON LOWER BRANCHES, TWIG TIP DIEBACK THROUGHOUT	PRESERVE	CITY	3.6	42
43 RED OAK	40.0	9.0	FAIR	ONE SIDED FORM	CROWDED BY ADJACENT TREE, IRREGULAR CROWN FORM, SOME DEADWOOD AND EPICORMIC GROWTH IN CROWN	REMOVED BY CITY	CITY	2.4	43
44 WHITE MULBERRY	75.0	12.0	POOR	IRREGULAR FORM	SIGNIFICANT WOUND ON WEST SIDE OF STEM, CROWN COMPOSED MAINLY OF EPICORMIC SHOOTS WITH DIEBACK THROUGHOUT	REMOVED BY CITY	CITY	4.8	44
45 SILVER MAPLE	52.0	10.0	DEAD			REMOVED BY CITY	CITY	3.6	45
46 COLORADO BLUE SPRUCE	39.0	7.0	FAIR	GOOD FORM	ELEVATED CROWN, BURIED ROOT COLLAR, SOME TWIG TIP DIEBACK THROUGHOUT	REMOVE	PRIVATE	2.4	46

1 V100 EXISTING TREE INVENTORY

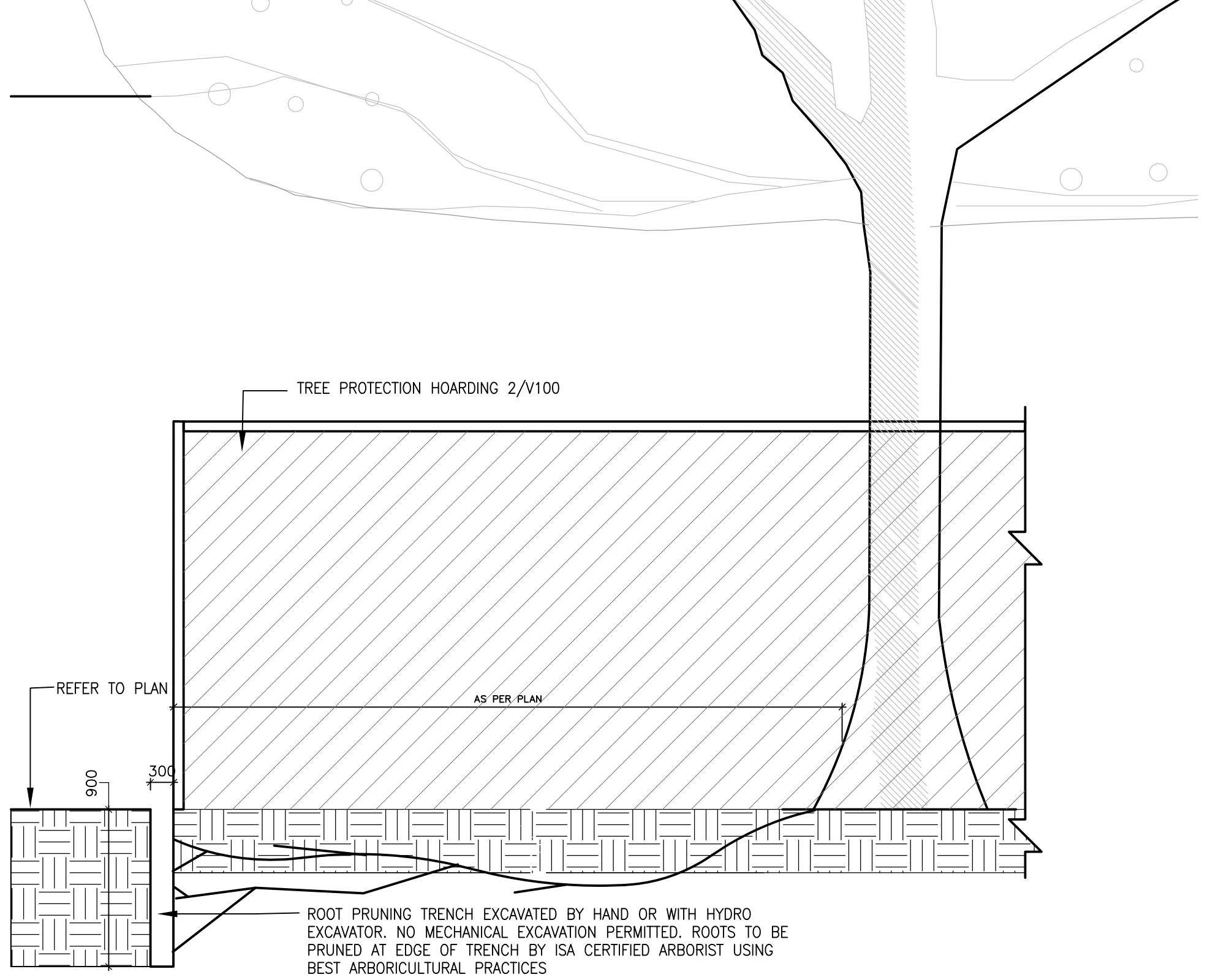


NOTES:
1. Hoarding details to be determined following initial site inspection.
2. Private tree hoarding to be approved by Development & Design.
3. City tree hoarding to be approved by Community Services Dept.
4. Hoarding must be supplied, installed and maintained by the applicant throughout all phases of construction.
5. Inspection must be conducted by the Development and Design Division prior to removing any/all private hoarding.
6. Do not allow water to collect and pond behind or within hoarding.
7. Timber supports are acceptable alternative to 1"x1" posts. U-shaped metal supports will not be accepted.
8. Plywood must be utilized for solid hoarding. OSB/Chipboard will not be accepted for solid hoarding. Plywood sheaths must be installed on "construction" side of frame.
9. Applicant is responsible to ensure utility locates are completed within city boulevard prior to installing framed hoarding.

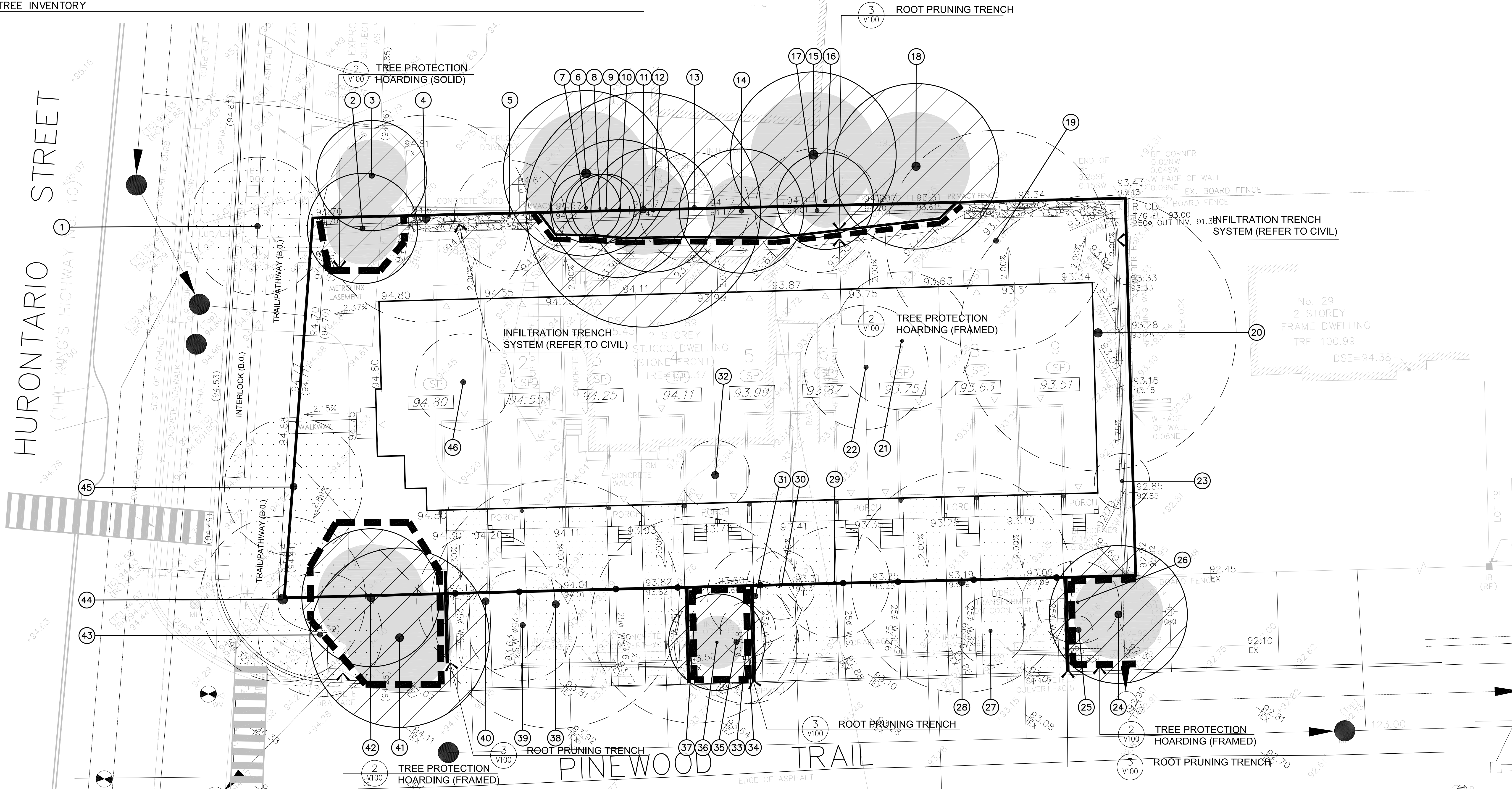
TREE PRESERVATION HOARDING

2 V100 TREE PROTECTION HOARDING

NOTE:
ANY BOUNDARY TREE INJURIES OR REMOVALS
WILL REQUIRE WRITTEN AUTHORIZATION
FROM THE ADJACENT PROPERTY OWNER



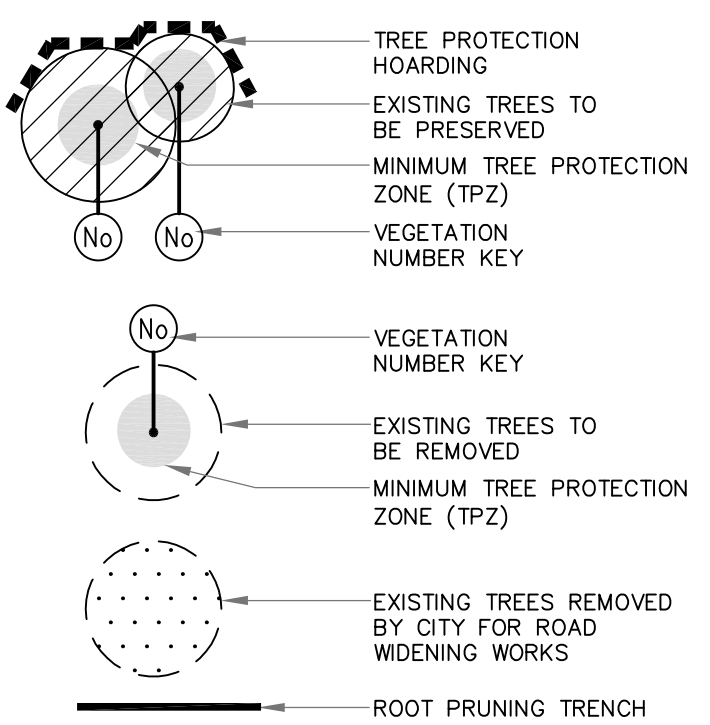
3 V100 ROOT PRUNING TRENCH



GENERAL NOTES

- VERIFY ALL DIMENSIONS.
- DO NOT SCALE DRAWINGS.
- REPORT ANY DISCREPANCIES, DISCOVERED ERRORS, OR OMISSIONS TO THE LANDSCAPE ARCHITECT BEFORE PROCEEDING.
- IT IS ADVISED THAT CONTRACTORS CONTACT THE LANDSCAPE ARCHITECT PRIOR TO CONSTRUCTION TO ENSURE THE USE OF THE LATEST REVISED DRAWINGS.
- DRAWINGS AND SPECIFICATIONS ARE THE PROPERTY OF THE LANDSCAPE ARCHITECT.

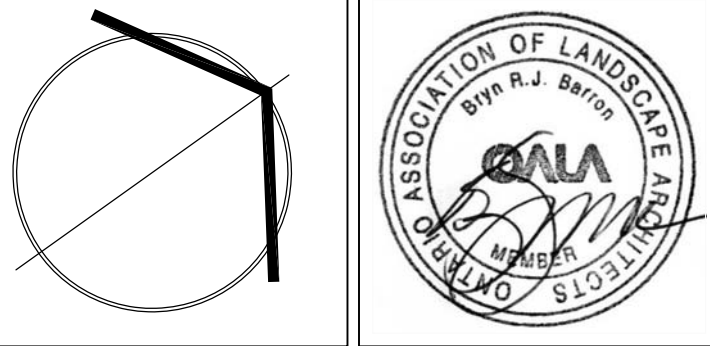
KEY MAP LEGEND



Matthew C. O'Brien
MATTHEW C. O'BRIEN
International Society of Arboriculture
Certified Arborist #004114A
Date: FEB 20th, 2025

4.	FEB 20th, 2025	REVISED AS PER COMMENTS AND SITEPLAN	B.B.
3.	SEPT 18, 2024	ISSUED FOR RESUBMISSION	B.B.
2.	AUG 14, 2024	ISSUED FOR SUBMISSION	B.B.
1.	AUG. 26, 2022	ISSUED FOR SUBMISSION	M.G.
No.	DATE.	REVISION.	BY.

It is the responsibility of the Contractor and/or Owner to ensure that the drawings with the latest revisions are used for construction.



SBK
STRYBOS BARRON KING
LANDSCAPE ARCHITECTURE

PROJECT:
PROPOSED TOWNHOUSE DEVELOPMENT
1489 Hurontario Street, Mississauga
OZ/OPA 24-13 W1

DRAWING TITLE:
EXISTING TREE INVENTORY AND PRESERVATION PLAN

SCALE: 1 : 125	PROJECT No. 21-5770
DATE: MAY 2021	DRAWING No. V100
DRAWN BY: SS	
CHECKED BY: MG	